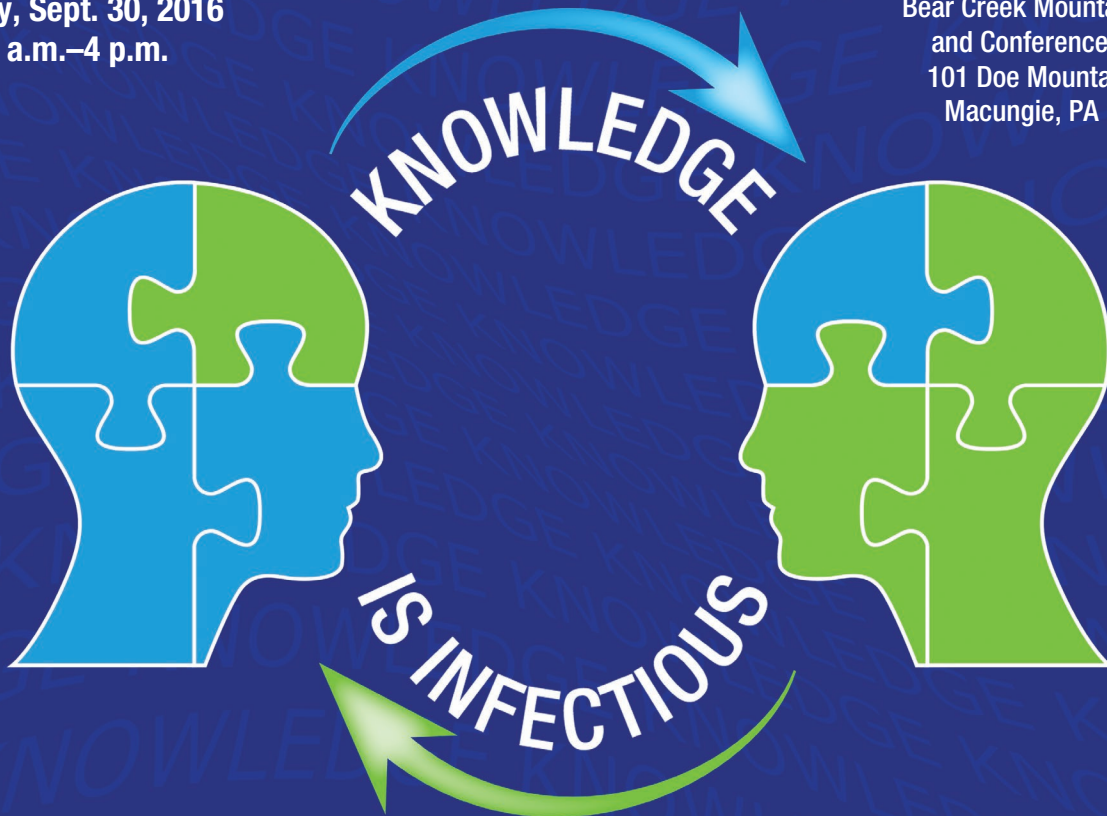


# 8th Annual Fleming Infection Prevention and Infectious Diseases Symposium

Friday, Sept. 30, 2016  
8 a.m.–4 p.m.

Bear Creek Mountain Resort  
and Conference Center  
101 Doe Mountain Lane  
Macungie, PA 18062



## Target Audience

Physicians, nurses, advanced practice clinicians, pharmacists, respiratory therapists and other health care providers who work in infection control and prevention, infectious disease, internal medicine, primary care, hospitals, laboratory, nursing homes, home care and office practices

## Agenda

7:30–8 a.m.	Registration and continental breakfast	12:15–1 p.m.	<b>The Expanding Role of Infection Prevention: How to Assess for the Top Two Mistakes in Outpatient Facilities</b> Judie Bringhurst, MSN, RN, CIC
8–8:15 a.m.	Welcome and opening remarks	1–2 p.m.	<b>Winning the Game of Life</b> Rayna DuBose
8:15–9:15 a.m.	<b>Can Intersectional Innovations Reduce Hospital Infection?</b> Sanjay Saint, MD, MPH	2–3 p.m.	<b>Progressing Forward with One Eye Looking in the Rearview Mirror</b> Luther Rhodes, MD, FACP, FIDSA, FSHEA
9:15–10 a.m.	<b>A Safety Risk Assessment for Health Care Facility Design</b> Ellen Taylor, PhD, AIA, MBA, EDAC	3–4 p.m.	<b>An Ebola Survivor's Story</b> Ian Crozier, MD
10–10:30 a.m.	Break	4–4:15 p.m.	Closing remarks, question and answer
10:30–11:15 a.m.	<b>Pearls, Pitfalls, and the Adventures of Street Medicine and Infectious Diseases</b> Brett Feldman, MSPAS, PA–C		<i>Speaker times are subject to change.</i>
11:15 a.m.–noon	Lunch		
Noon–12:15 p.m.	Introduction of afternoon speakers		

LVHN.org

## Faculty

### Judie Bringham, MSN, RN, CIC

Infection Preventionist/Safety  
Compliance Officer  
University of North Carolina  
Hospitals

### Ian Crozier, MD

Infectious Disease Physician  
World Health Organization (WHO)

### Rayna DuBose

President  
Inspirations

### Brett J. Feldman, MSPAS, PA-C

Director, Street Medicine  
Lehigh Valley Health Network

### Luther Rhodes, MD, FACP,

### FIDSA, FSHEA

Chief, Infection Control and  
Hospital Epidemiology  
Lehigh Valley Health Network

### Sanjay Saint, MD, MPH

Chief of Medicine, VA Ann Arbor  
Healthcare System

George Dock Professor of Internal  
Medicine, University of Michigan  
Medical School

Special Correspondent, New  
England Journal of Medicine

### Ellen Taylor, PhD, AIA,

### MBA, EDAC

Vice President for Research  
The Center for Health Design

## Designation Statement

It is Lehigh Valley Health Network's (LVHN) policy to ensure balance, independence, objectivity and scientific rigor in all of our sponsored educational programs. Faculty and all others who have the ability to control content of continuing education activities sponsored by Lehigh Valley Health Network are expected to disclose to the audience whether they do or do not have any real or apparent conflict(s) of interest or other relationships related to the content of their presentation(s).

Lehigh Valley Health Network is accredited by the Pennsylvania Medical Society to provide continuing medical education for physicians. Lehigh Valley Health Network designates this live educational activity for a maximum 6.25 AMA PRA Category 1 Credits.™ Physicians should only claim credit commensurate with the extent of their participation in the educational activity.

Lehigh Valley Health Network is an approved provider of continuing nursing education by the PA State Nurses Association, an accredited approver by the American Nurses Credentialing Center's Commission on Accreditation.

Completion Criteria:

Registered nurses attending the entire program and completing the evaluation tool will receive 6.25 contact hours.

Lehigh Valley Health Network Department of Pharmacy is accredited by the Accreditation Council for Pharmacy Education as a provider of continuing education.

Pharmacists attending the full program and completing a program evaluation will earn 3.5 CEUs. Data will be updated to CPE Monitor within 4-6 weeks following the program for participants who complete this activity, program evaluation and submit required participant information including, NABP e-Profile ID and DOB. UAN 0545-9999-16-007-L04-P.



## Registration Information

**Registration deadline:** Sept. 23, 2016

**Registration fee:** \$100; \$75 for LVHN Colleagues  
(Additional \$10 for on-site registration)

Registration for the conference includes the educational program and any food event listed in this flier. Payment is accepted by credit card only.

LVHN colleagues, please bring your LVHN badge the day of the event since we will be using the badge swipe to record your attendance.

### To register

To complete electronic registration and payment, please go to:

[go.activecalendar.com/lvhn-doe](http://go.activecalendar.com/lvhn-doe).

### On-site registration

On-site registrations may be available if space permits at an additional fee of \$10. Please be prepared for additional time to process your registration when you arrive. Payment can be made on-site by check or credit card only.

### Cancellations and substitutions

Refunds will be granted up to one week prior to the conference. After one week prior to the conference, no refunds will be granted. Lehigh Valley Health Network reserves the right to substitute faculty listed in this brochure and will provide comparable alternative faculty.

### Evaluation Email Policy

Lehigh Valley Health Network respects your right to privacy and will not sell, lease or provide your contact information to a third party. By registering for this event, you agree to be contacted after the event for a post-event evaluation survey. RNs should note that contact hours may only be awarded when the completed evaluation is received.

For questions, please contact the Department of Education at **610-402-2277**.

### Room Reservations

To make a reservation through Bear Creek Mountain Resort website:

- Go to [bcmr.com](http://bcmr.com)
- Click on Special Codes
- Click on Hotel
- Enter Promo Code under Group Code LHVN16
- Go to Make a Reservation
- Click check availability
- Enter the correct dates
- View available rooms
- Number of guests
- Select

Please be advised that the group code field on the website is CASE-SENSITIVE and must be entered in all capital letters. If you have difficulty booking online, please call Bear Creek toll free, **1-866-SKI-AT BC** (1-866-754-2822) x205 and mention the promotional code.

Rooms available at discounted price until **Sept. 15, 2016**. After this date, rooms will be available at the regular rate.

### Directions

Directions may be found on the Bear Creek Mountain Resort and Conference Center website – [bcmountainresort.com/bc-directions](http://bcmountainresort.com/bc-directions).