

MUHLENBERG MEDICAL CENTER PULSE

Vol. 10, No. 1

MUHLENBERG MEDICAL CENTER, BETHLEHEM, PA.

March, 1977

Social Services Available To Every Patient

(Continued on page 3)

Med-Staff Approves Expansion Drawing

Plans for the MMC \$6.5 million expansion and renovation program continue to move forward. In early February the Medical Staff Executive Credentials Committee and the hospital's department heads approved the schematic drawings which were prepared by Medical Care Systems, Inc.

In a letter to the MMC board of directors, Dr. Walter F. Stull, Jr., medical staff president, stated that the committee pledged its full support to the board in regard to the expansion and renovation program.

The next step is board approval and direction to Medical Care Systems to prepare the detailed drawings. These must be submitted to the departments of Health and Labor and Industry in Harrisburg for official approval.

The program calls for the construction of a 3-story wing at the front and a one-story wing at the northeast corner of the present building. No beds will be added, but 72 beds will be relocated in the 3-story wing. The remainder of the hospital's 144 beds will be renovated to conform with modern standards for medical/surgical patients.

New facilities will be provided for x-ray, laboratory, physical therapy, housekeeping, nuclear medicine, pharmacy and other ancillary facilities. New emergency and out-patient departments are included in the plans.



SOCIAL SERVICE TRIO—Left to right, Sister Gunnell Sterner, director; Mrs. Toby Juda, psychological case worker, and Barbara Symanovich, secretary. See story on page 3.

Women Plan 20th Anniversary

The MMC Auxiliary will observe its 20th anniversary in September, and plans are being made for the celebration of this milestone in service to the ministry of healing.

Mrs. Frank Muhr, Auxiliary president, named a three person committee to plan a gala Anniversary Luncheon. They are Mrs. Charles Payne, Bethlehem, chairlady; Ina Engle, Allentown, and Mrs. Ralph Hartzell, Bethlehem.

Mrs. John Storm, Bethlehem, is heading a committee which will research the history of the organization.

Founded in July 1957, four years prior to the hospital's

opening, the Auxiliary has proven to be one of the most effective hospital fund-raising organizations in Lehigh Valley history. Membership at the end of 1976 was 3,682.

At its January meeting the Auxiliary paid \$5,000 on its pledge to underwrite the cost of a chemical blood analyzer. To date \$50,000 has been contributed toward the purchase of this equipment which will cost \$85,000.

The 1976 Holly Fair, sponsored by the Catasauqua Branch, was one of the most successful in the history of the event. More than \$3,000 was realized from the one-day affair.

Men of MMC Annual Banquet April 11—Macaulay Speaker

More than 250 members, guests and wives will attend the 17th annual banquet of the Men of MMC, Monday, April 11, 6:30 p.m., in the Northampton Community Center.

President William Waud announced that the popular family style "all you can eat" dinner will be followed by a brief program, entertainment and music for dancing.

Ronald Macaulay, the hospital's controller, will address the assemblage on "Looking Ahead at MMC". The Wicand

(Continued on page 2)

Dr. Episcopio Joins MMC Medical Staff

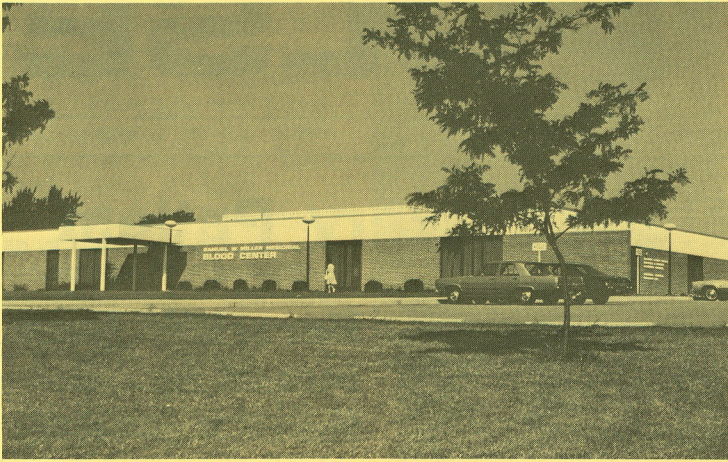
Joseph V. Episcopio, M.D., has joined the MMC Medical Staff and will have active privileges in internal medicine. His office is in Bethlehem.

Dr. Episcopio, a Brooklyn native, is a graduate of Brooklyn College and earned his degree in medicine from the Medical School of the Autonomous University of Guadalajara, Mexico. He had post-graduate training at Maimonides Medical Center, Brooklyn, and completed his residency in internal medicine at Long Island College Hospital.

Dr. Episcopio was recommended by the Medical Staff's Credentials Committee and approved by the hospital's board of directors.

PULSE

Published Bi-Monthly by the
MUHLENBERG MEDICAL CENTER
Schoenersville Road, Bethlehem, Pennsylvania 18017
Donald E. Porter, Administrator



MILLER BLOOD CENTER where Muhlenberg Medical Center's medical director and Sports Medicine Clinic are now located. These departments are in the east end (right above) of this structure on the hospital's campus.

Drs. Barnes and White Relocate Offices in Blood Center Bldg.

In another chess-board move to utilize all possible space, the Muhlenberg Medical Center will occupy a vacant section of the Miller Memorial Blood Center Building.

Executive Director Donald E. Porter announced that Dr. Ben C. Barnes, the medical director, and Dr. Richard K. White, director of special services, are establishing their offices in the building at the west end of the hospital's campus. They will occupy the part of the structure which had housed the administrative offices of Hospital Central Services, Inc., and HCSC-Credit & Collections, one of the services which area hospitals share.

Hospital Central Services moved into its own building adjacent to the HCSC-Laundry in southwest Allentown in December.

Dr. Barnes' office had been next to that of Mr. Porter,

and his secretary, Mrs. Ellen Contento, had her desk in the corridor that connected the two offices.

Dr. White was located in a trailer parked outside the food service section at the west end of the hospital. Mrs. Clare Dixon is his assistant.

The 2,450 sq. ft. also will provide a new location for the hospital's Medical Library, which had been in the lower level of the Surgical Wing. Mrs. Marian Smith, a volunteer, is the medical librarian.

The former HCSC board room is being converted to a clinic for industrial and insurance physical examinations.

It will be available to members of the medical staff for these purposes.

When HCSC announced its intention to move its offices, the MMC board of directors approved the plan whereby the hospital would utilize this available space.

**Sports Medicine Clinic
now located in
Miller Blood Center Building**

BANQUET (Continued from page 1)

Folk Lore Singers will entertain and Toppers will provide the dance music.

Tickets are \$6.00 per person and may be secured at the hospital's volunteer office or from members. Reservation deadline is April 3.

Mr. Waud also reported that the "men" have completed payment of the new addressograph and plates for the hospital at a total cost of \$4,141. He said the organization had 246 members as of January 1. The board approved the publication of a quarterly newsletter which will be mailed to members and other interested men in the hospital's service area.

Bed Occupancy 83 Per Cent July-Jan.

Occupancy of the Muhlenberg Medical Center's beds during the first seven months of the current fiscal year increased seven percent over the same period in 1975-76.

Donald E. Porter, executive director, reported that 83.16 percent of the 144 beds were occupied in the period from July 1 through January 31. In the same seven months last year the occupancy rate was 76.38 percent.

Surgical beds use showed the most spectacular rise—82 percent, as compared with 67 percent. Occupancy in all other nursing sections and psychiatry also increased.

Mr. Porter noted that the average length of stay is longer this year—9.6 days, as compared with 8.9 days.

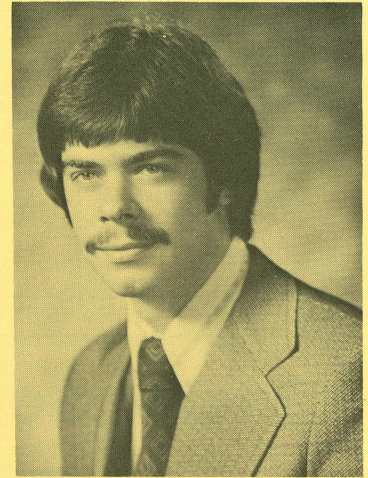
The MMC beds include 79 medical/surgical, 7 in the Intensive/Coronary Care Unit, 36 in the Psychiatric Unit and 22 in the Skilled Nursing Facility.

Volunteer Tea, April 24

Muhlenberg Medical Center's volunteers will be honored at an informal tea on Sunday, April 24. It will be held in the dining room from 2 to 3 p.m.

Mrs. Mary Grace Stanton, director of volunteers and community services, announced that all youth and adult volunteers will be invited to attend.

Candystrippers and Red



Ronald Macaulay

Physicians Attend Pacemaker Lecture

The application and function of various types of cardiac pacemakers were discussed by Robert L. Kozam, M.D., at the January meeting of the medical staff of Muhlenberg

Dr. Kozam is attending cardiologist at St. Mary's Hospital, Queens, New York City, and staff physician at Englewood Hospital, Englewood, N.J.

The speaker displayed various pacemakers and contrasted the function of the "fixed" device that has a continuous pace with the "demand" device that operates when the heart requires it.

Dr. Kozam is a graduate of New York University and the Hahnemann Hospital School of Medicine, Philadelphia, and was a resident in medicine at the Manhattan Veterans Administration Hospital. He is a fellow of the American College of Cardiology and was chief of the Division of Cardiology, Methodist Hospital, Brooklyn, from 1968-72.

Cross Youth Volunteers who have reached the 100 hour plateau will be capped during the ceremonies. Awards will be presented to other youth and adult volunteers who have attained new plateaus of service.

Entertainment will be provided by the Tag-A-Longs, a singing group, and Auxiliary members will serve at the tea table.

Post-Hospital Problems Are Challenge To Social Services

Mrs. B is a patient in the Muhlenberg Medical Center's Skilled Nursing Facility. She goes to Physical Therapy twice a day and will soon be discharged. Since she became a patient in the unit, Sister Gunnell Sterner, director of social services, has been helping her to plan for the future. Mrs. B lives alone and her only local relatives are a brother and his wife. Where she will go when she leaves MMC is an important and difficult decision.

Helping to solve such problems is the day-in, day-out job of Social Services, a department that has functioned since the hospital opened in 1961. It was in 1974, however, that the Joint Commission of Hospital Accreditation report recommended that the hospital employ a qualified social worker. Sister Gunnell, who has a master's degree in social work, was named director of the department.

In the years before her arrival directors used the services of local health and welfare agencies. The new director's first task was to decide what the department should be doing, and this required considerable study and research. Next came the addition of a case worker and a secretary which comprises the staff.

AVAILABILITY GOAL

The first goal was to make social services available to every patient. In the past it had been necessary for the case worker to seek the physician's permission in order to confer with a patient. In early 1975 the hospital's Medical Executive Staff granted Social Service permission to visit every patient without a doctor's order.

Sister Gunnell became the case worker for the medical/surgical and Skilled Nursing Facility (SNF) patients. Basic discussions include hospitalization and other insurance benefits, as well as any necessary convalescence plans.

Most of the SNF patients are elderly and their needs after discharge can range from

wheel chairs and walkers to visiting nurses and meals-on-wheels. Some will transfer to a nursing home, so proper arrangements must be made.

Social Service has paid visits to about 90 per cent of the area's nursing homes and has prepared a list of those whose facilities are considered physically sound. This list is given to patients and their families for reference.

Sister Gunnell suggests that they visit several homes and, most important, envision their mothers, fathers, or other relatives in each setting.

Social Service will arrange for a visiting nurse for the patient who must have home care. The family is also advised of the other available services in the community.

"We emphasize that utilizing these services is not taking charity," Sister added. "Many are United Way agencies and most patients were regular contributors to United Way during their years of employment."

The department arranges transportation of patients through 11 ambulance services. Those who must return to MMC for out-patient services will also need transportation, and Social Service makes these arrangements through the American Red Cross Motor Corps.

SOCIAL WORKER

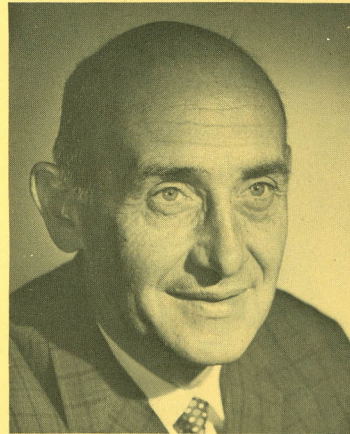
Last June the hospital appointed its first psychological social worker, Mrs. Toby Juda, and the patients in the Psychiatric Unit are her responsibility.

She sees the patient on the day of his admission and advises him of his legal rights and of her plans to monitor his program. When the patient is ready to leave, Mrs. Juda makes plans for after-discharge treatment, or admission to the Allentown State Hospital or some other institution.

There are 35 to 40 cases at a given time in Medical/Surgical and SNF. In a typical SNF case — probably a stroke or hip fracture or re-

(Continued on page 4)

Ueberroth Summer Festival Chairman, Fete August 26-28



Austin Ueberroth

Austin J. Ueberroth of Bethlehem has been named chairman of the 1977 edition of the Lehigh Valley Summer Festival. For more than a decade the festival has been one of the area's most popular summer events for people of all ages.

Elmer Paules, also of Bethlehem, will be the co-chairman.

A native of Bethlehem, Mr. Ueberroth is supervisor of

sales in the Bethlehem Steel Plate Department. He resides with his wife and a son, while a married son lives near Philadelphia.

Last August the new chairman was in charge of parking. He is a member of the Men of MMC.

The committee for this summer's festival, which will be held August 26-28 on the hospital's grounds, has accepted the challenge to exceed the 1976 record-breaking proceeds of \$34,500. Mrs. Frank Muhr of Bethlehem chaired last summer's event.

Mr. Ueberroth stated that another lineup of outstanding entertainment is being developed.

An outstanding art exhibit, the crafts show, rides and games and a variety of food and refreshments are also crowd-pleasing features of the big fair. The Auxiliary and Men of MMC sponsor the 3-day fete for the benefit of the hospital's special equipment fund.

Surveys Keep Coming — State's Hospitals Average 68 a Year

A hospital's function is to provide a program of care and treatment, but more and more time is being spent in completing surveys. The Hospital Association of Pennsylvania (HAP) reports that the hospitals in the state receive an average of 68 surveys of various kinds during the year.

Completion of 85 percent of these surveys entails some 212 hours, or more than five weeks of one employee's time.

HAP says that 27 percent of the surveys were mandatory and took an average of

more than seven hours to complete. The voluntary surveys — 73 percent — required an hour and 40 minutes on the average.

The report suggests that, if all Pennsylvania community hospitals completed the 58 surveys averaged by a sample group in the study, 24 man-years of work would be required.

Incidentally, the number of requests for data being received by the hospitals in the state is increasing.

FOUR SEASONS JEWELRY

the new big-seller in
Camille Gift Shop
MMC Main Floor

Mary Jane Matte Named 1977 Northampton County Miss Hope

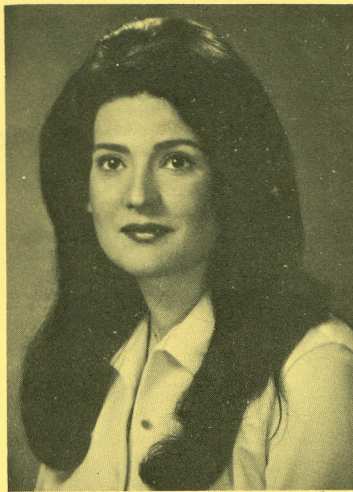
Mary Jane Matte, Muhlenberg Medical Center clinical coordinator, was named Miss Hope for 1977 by the Northampton County Unit, American Cancer Society. She will serve as the symbol of the society in its 1977 fund crusade.

Mrs. Matte also will represent the county at the statewide crusade kickoff in Harrisburg March 30-April 1.

At MMC she is also chairman of the Nursing Audit and co-chairman of the Patient Care Committee. The new Miss Hope is a member of the hospital's Disaster, Nursing Executive and Infectious Disease Control committees.

She is a member of the board of the Lehigh Valley Trauma Society and is an instructor for the American Heart Association.

A resident of Bethlehem, Mrs. Matte came to Muhlenberg Medical Center in 1973 as a staff nurse in the Emergency Room. In January 1974 she was named nurse manager for the unit, and was appointed to her present post in January 1976.



Mary Jane Matte

She is a native of Bethlehem and was graduated from St. Francis Academy and the Sacred Heart Hospital School of Nursing. Mrs. Matte was employed by Emory University, Atlanta, in clinical cancer research and later was charge nurse in the Emergency Room at Cobb General Hospital in that city. Prior to joining MMC, she was charge nurse at Holy Family Manor, Bethlehem.

Jean Hock Named Secretary To Patient Services Director

\$200,000 Received From Fritch Estate

With a final distribution of \$200,000, the Muhlenberg Medical Center received a total of \$450,000 from the estate of the late Mrs. Winifred M. Fritch of Bethlehem. Mrs. Fritch died in 1972 at the age of 89.

She was one of the founders of the hospital and served on its board of directors for 15 years. Mrs. Fritch also was a charter member of the Women's Auxiliary and served on its first board.

Atty. Jacob S. Kolb, MMC president, said, "Mrs. Fritch had an abiding interest in the hospital. Through her concern and generosity she has helped to assure the continuation and growth of this ministry of healing."

Jean Hock of Bethlehem has been employed as secretary to Joseph Fitzgerald, director of patient services. She began her new duties on February 7.

Miss Hock was a student at the Word-of-Life Bible Institute in New York State during the past year. Before enrolling in the institute she had been medical records transcriptionist at Commonwealth Doctors Hospital in Fairfax, Va.

A native of Allentown, Miss Hock was graduated from Bethlehem Catholic High School and Northampton County Community College, where she majored in the executive secretary program. Upon graduation she was secretary for a Bethlehem law firm and a stenographer for the Lehigh Valley Railroad.

Dr. Altman Blood Cen. Chairman-elect

Dr. Arthur A. Altman, director of the Muhlenberg Medical Center Laboratory, has been elected chairman-elect of the Medical Advisory Committee to the Miller Memorial Blood Center. Dr. John J. Shane, director of clinical laboratories and chief of the Department of Pathology, Allentown and Sacred Heart Hospital Center, is the new chairman.

Dr. Altman, who is also Warren Hospital pathologist, is a graduate of the University of Pennsylvania. He is a member of the American Society of Clinical Pathologists and the College of American Pathologists.

The Medical Advisory Committee, a volunteer group, is responsible for the medical policies of the Miller Blood Center.

Social Services (Continued from page 3)

placement patient — Sister Gunnell talks with the nearest relatives to get an insight to his or her home life, personality, hobbies and physical infirmities.

When the patient plans to return to those with whom he had been living, they must be made aware of his condition and how it will affect his daily living activities. "We must put the patient and those with whom he will live together," is how Sister Gunnell describes her job.

Then there is the patient who lived alone and cannot return to a solitary life. If he has no relatives a home must

Hosp. Recertified By Pa. Health Dept.

The Pennsylvania Department of Health has approved MMC for relicensure and recertification for Medicare. The state conducted its annual 4-day survey of the hospital in December.

Donald E. Porter, executive director, attended an American Hospital Association seminar in Orlando, Fla., February 17-20 . . . Mr. Porter was named to the Hospital and Medical Staff Relations Committee of the Hospital Association of Pennsylvania.

Dr. C. Eugene Wilson of Allentown, has accepted the post of college physician at Indiana State University, Indiana, Pa. A graduate of the Philadelphia College of Osteopathic Medicine, he was director of the drug detoxification unit at MMC and medical director of the Methadone Maintenance Clinic of Lehigh County.

be found. She considers the living situation of our aged citizens as one of our major problems.

Sister Gunnell is a graduate of Simmons College and received her master's degree from Bryn Mawr College. Prior to joining MMC she was director of the Tabor Home for Children in Doylestown.

Mrs. Juda, a native of Israel, earned a bachelor's degree in social work at Columbia University.

Barbara Symanovich is the department's secretary-receptionist.

Muhlenberg Medical Center
Bethlehem, Pa. 18017

Non-Profit Organization
U. S. POSTAGE
PAID
BETHLEHEM, PA.
Permit No. 375

MRS. WILLIAM SIEBLER
301 BIRCH ST.
STOCKERTOWN, PA 18083