

Lehigh Valley Health Network
LVHN Scholarly Works

Historical Archives

Allentown and Sacred Heart Hospital Center

Lehigh Valley Health Network

Follow this and additional works at: <https://scholarlyworks.lvhn.org/historicalarchives>

Let us know how access to this document benefits you

Published In/Presented At

(2019). Allentown and Sacred Heart Hospital Center. *LVHN Scholarly Works*. Retrieved from <https://scholarlyworks.lvhn.org/historicalarchives/43>

This Book is brought to you for free and open access by LVHN Scholarly Works. It has been accepted for inclusion in LVHN Scholarly Works by an authorized administrator. For more information, please contact LibraryServices@lvhn.org.



Allentown and Sacred

ALLENTOWN,

One of the most comprehensive health care facilities in the nation, the new Allentown and Sacred Heart Hospital Center offers a wide variety of clinical services including General, Plastic, Vascular, Cardio-Thoracic, Neurological, Orthopedic and Urological Surgery, Cardiology and Emergency

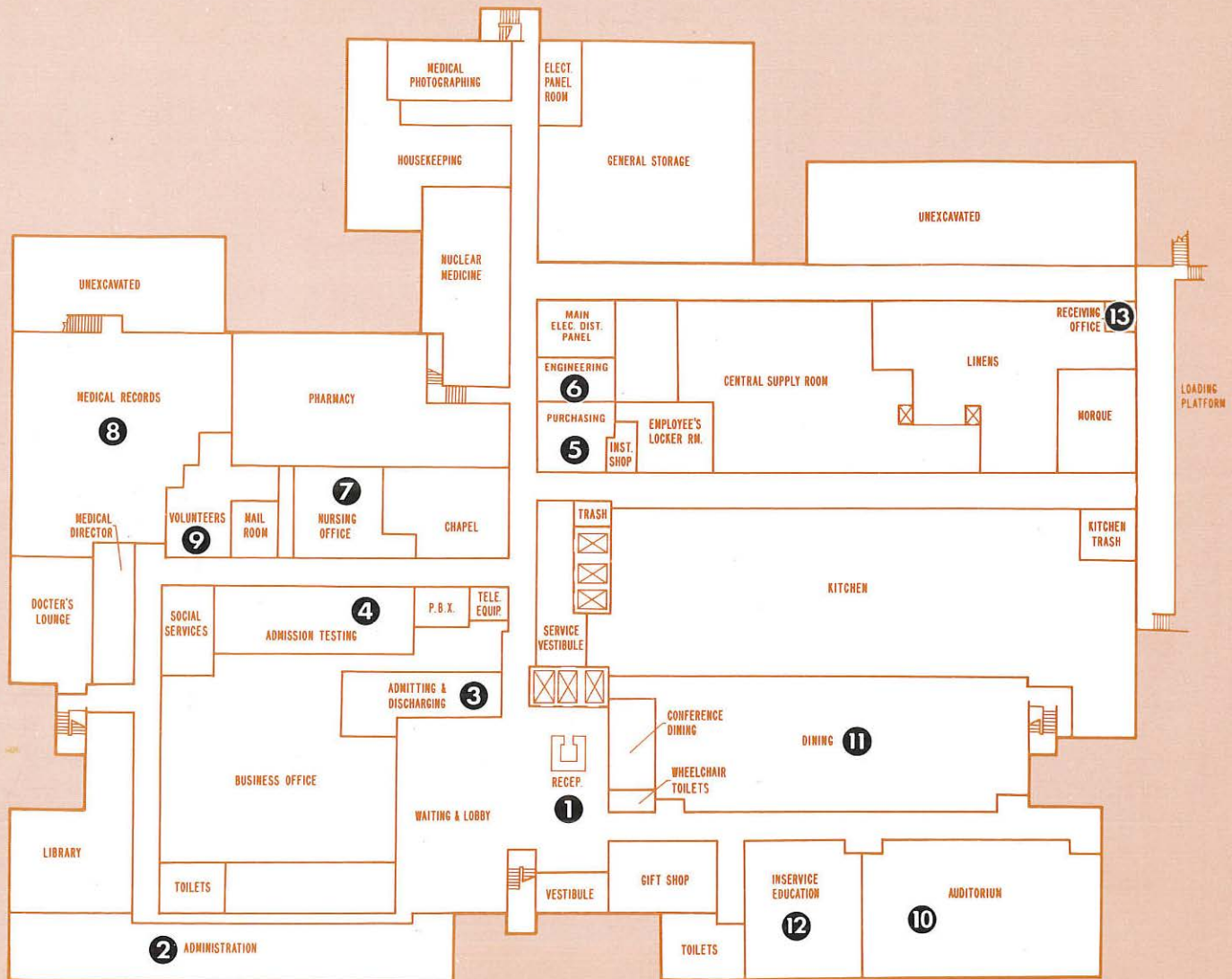
Medicine and Emergency Surgery. The Hospital Center has a *total* patient bed capacity of 460 beds, including 110 beds provided to meet future community needs. Presently operating at a 350-bed level on five floors, the use is as follows:
300 Medical/Surgical beds in units of 30

16 Intensive Care beds
(I.C.U.)
12 Acute Coronary Care beds
16 Progressive Care Beds
6 Acute Burn Care Beds

350 Total

FIRST FLOOR

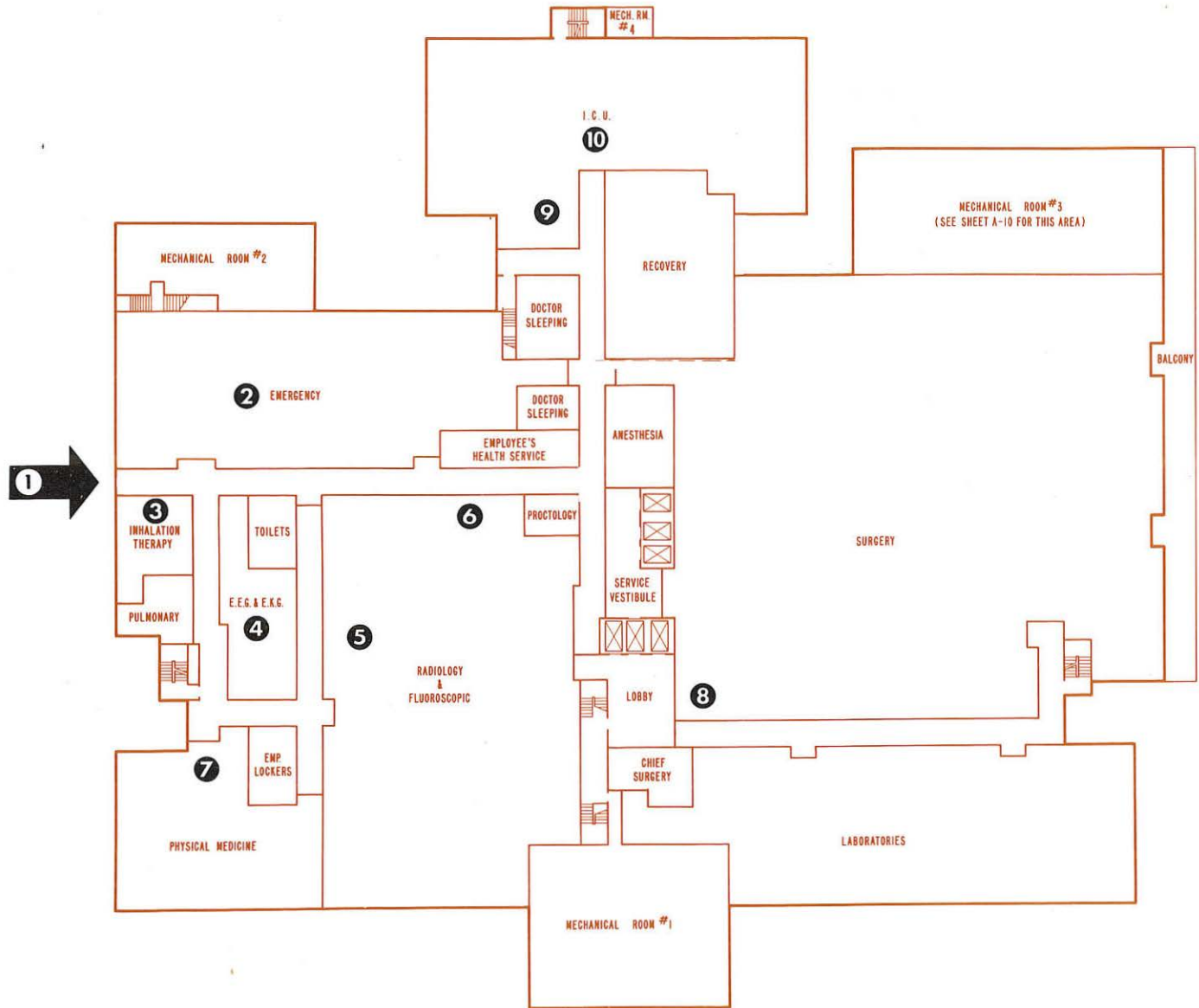
SCALE: 1IN. = 48 FT.



- | | | |
|--------------------------|-----------------------------------|------------------------|
| ① Reception Area | ⑥ Engineering | ⑪ Dining Room |
| ② Administrative Offices | ⑦ Nursing Office | ⑫ In-service Education |
| ③ Admitting & Discharge | ⑧ Medical Records & Transcription | ⑬ Receiving Office |
| ④ Pre-Admission Testing | ⑨ Volunteers | |
| ⑤ Purchasing | ⑩ Auditorium | |

SECOND FLOOR

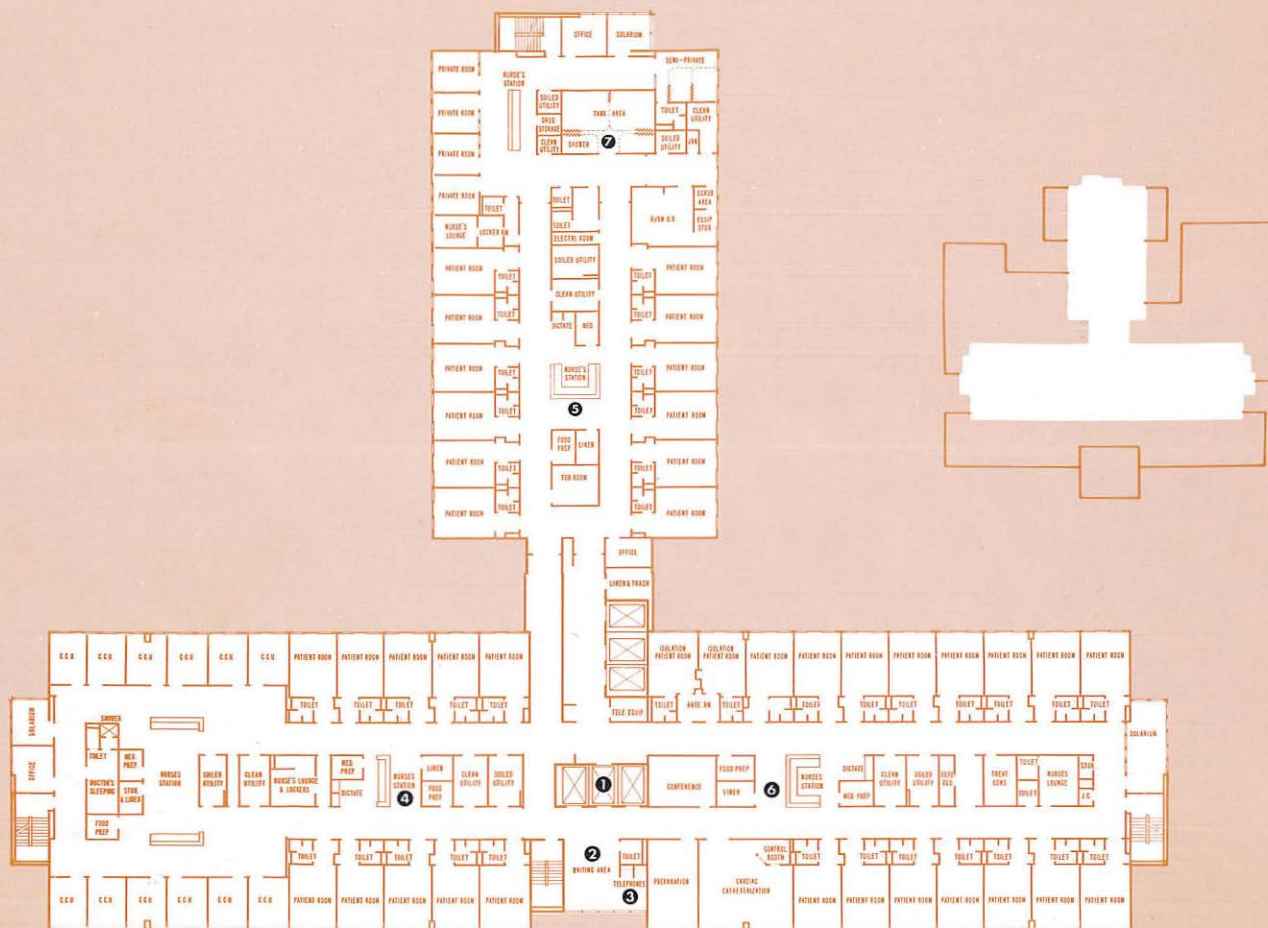
SCALE: 1IN. = 48 FT.



- | | |
|-------------------------------------|---------------------------------|
| ① Emergency and Outpatient Entrance | ⑥ X-Ray, Inpatient Waiting Room |
| ② Emergency Room | ⑦ Physical Medicine |
| ③ Respiration Therapy | ⑧ Surgery |
| ④ E.E.G. & E.K.G. | ⑨ I.C.U. Waiting Room |
| ⑤ X-Ray, Outpatient Waiting Room | ⑩ Intensive Care Unit (I.C.U.) |

THIRD FLOOR

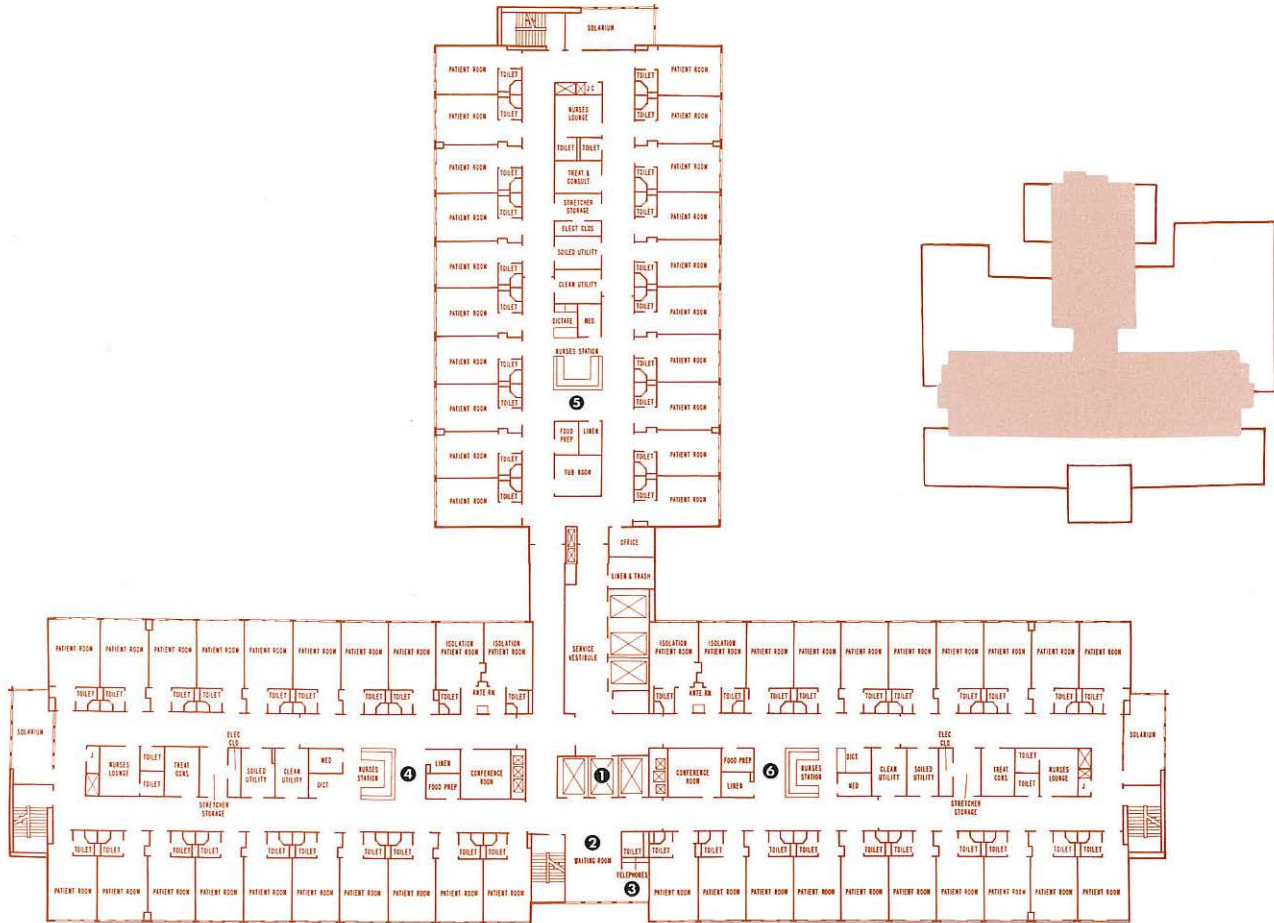
SCALE: 1IN. = 48 FT.



- ① Elevators
- ② Waiting Area
- ③ Public Telephones
- ④ Nurses Station (Wing A)
- ⑤ Nurses Station (Wing B)
- ⑥ Nurses Station (Wing C)
- ⑦ Burn Treatment Area

FOURTH, FIFTH, SIXTH and SEVENTH FLOORS

SCALE: 1IN. = 48 FT.



- ① Elevators
- ② Waiting Area
- ③ Public Telephones
- ④ Nurses Station (Wing A)
- ⑤ Nurses Station (Wing B)
- ⑥ Nurses Station (Wing C)



The modern dining room/cafeteria seats 166.



Staff and training meetings are held regularly in the auditorium.

Modern facilities include a dining room serving complete meals and snacks, and an auditorium for staff and training use.

Patient rooms are designed to provide the best possible area for patient care and recovery. All rooms are equipped with electrically operated beds, inter-communication systems, telephone, and TV/Radio.



The Hospital Center has a total patient bed capacity of 460.



Welcome...

to the ALLENTOWN and SACRED HEART HOSPITAL CENTER. Whether you are a visitor or a patient, we will try to make your stay as comfortable as possible. We are proud of our Hospital

Center, not only because of its architectural beauty and functional design, but also because this newest health-care facility is a lasting monument to the community and to all whose efforts which made it a reality. In the lobby area you will note a large bronze tablet on a "plinth," upon which are inscribed the

names of some three thousand individuals, groups and organizations who gave so generously of their time, expertise and resources to bring to fruition this truly comprehensive medical-surgical institution. Our grateful thanks are also due countless others who gave anonymously of their time and talents.



Heart Hospital Center

PENNSYLVANIA

Number of Operating Rooms — 12
Total Square Feet — 399,000 on a
10-acre site

Number of Floors — 2 Ancillary and
Patient Care

Operating Budget Fiscal 1976 —
\$15,000,000

Total Personnel — 774 (full-time
equivalent)

Personnel Ratio for 350 beds — 2.06

The Hospital Center is a good com-
munity citizen too, providing employ-
ment for almost 800 people with an
annual operating budget in excess of

\$15,000,000. Thus, most of the revenue
derived from health-care services is
returned to the community from which
it came. The Center is also an im-
portant customer for many local
businesses and industries, purchasing
materials, supplies and services for its
ongoing needs.