

## Vein Graft Pseudo-Aneurysm Presenting as a Mediastinal Mass

Lynn N. Moran DO  
*Lehigh Valley Health Network*

Sudip Nanda MD, FACP  
*Lehigh Valley Health Network*

Gary W. Szydowski MD  
*Lehigh Valley Health Network, Gary.Szydowski@lvhn.org*

Matthew W. Martinez  
*Lehigh Valley Health Network, matthew\_w.martinez@lvhn.org*

Follow this and additional works at: <https://scholarlyworks.lvhn.org/medicine>



Part of the [Cardiology Commons](#), and the [Medical Sciences Commons](#)

---

### Published In/Presented At

Moran, L. N., Nanda, S., Szydowski, G., & Martinez, M. W. (2011). Vein graft pseudo-aneurysm presenting as a mediastinal mass. *European Journal Of Cardio-Thoracic Surgery: Official Journal Of The European Association For Cardio-Thoracic Surgery*, 40(5), e168. doi:10.1016/j.ejcts.2011.06.032.

This Article is brought to you for free and open access by LVHN Scholarly Works. It has been accepted for inclusion in LVHN Scholarly Works by an authorized administrator. For more information, please contact [LibraryServices@lvhn.org](mailto:LibraryServices@lvhn.org).

Images in cardio-thoracic surgery

## Vein graft pseudo-aneurysm presenting as a mediastinal mass

Lynn N. Moran<sup>a,\*</sup>, Sudip Nanda<sup>a</sup>, Gary Szydlowski<sup>b</sup>, Matthew W. Martinez<sup>a</sup>

<sup>a</sup>Division of Cardiovascular Diseases, Lehigh Valley Health Network, Allentown, PA, USA

<sup>b</sup>Division of Cardiothoracic Surgery, Lehigh Valley Health Network, Allentown, PA, USA

Received 5 May 2011; received in revised form 9 June 2011; accepted 14 June 2011; Available online 2 August 2011

**Keywords:** Coronary disease; Pseudo-aneurysm

A 69-year-old female with a history of coronary artery bypass grafting (CABG) presented with chest tightness and left hilar/perihilar mass (Fig. 1(A)) on chest X-ray. Contrast-enhanced computed tomography (CT) revealed a pseudo-aneurysm in the graft to the obtuse marginal

artery (OM) (Fig. 1(B)). Angiogram confirmed the saphenous vein graft (SVG) pseudo-aneurysm (Fig. 1(C)). Surgery was successful with excision of the pseudo-aneurysm and bypasses to the OM and Posterior Descending Artery (PDA) (Fig. 1(D)).

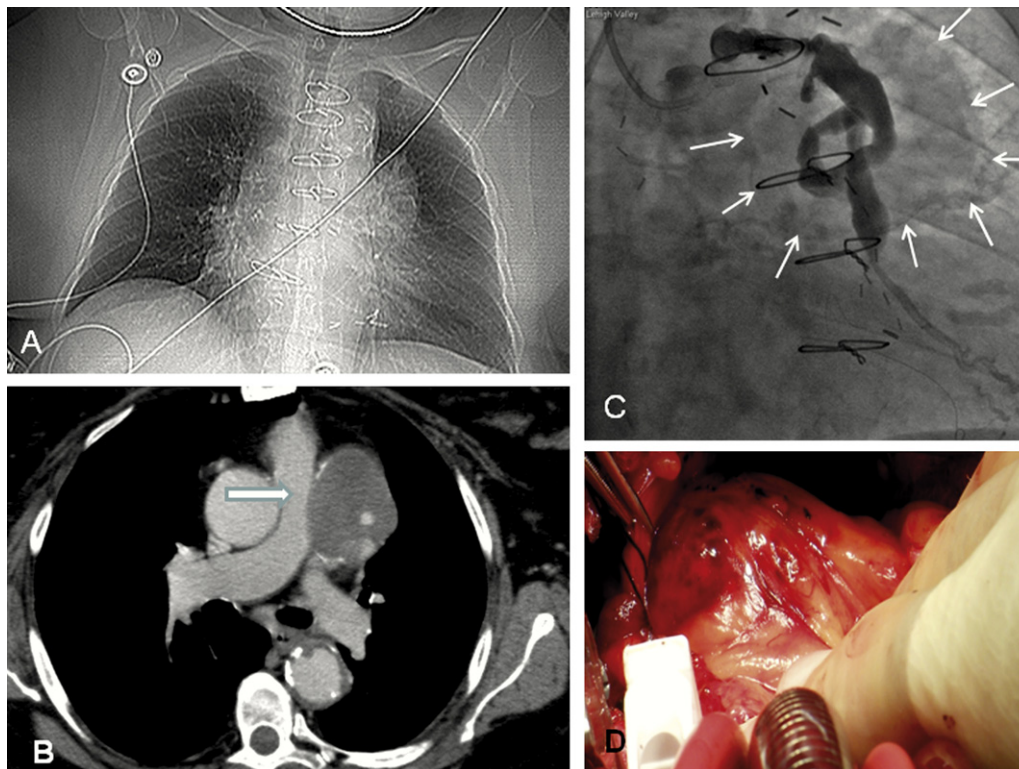


Fig. 1. (A) Chest radiograph, AP view, with an opacity in the perihilar region. (B) Contrast-enhanced CT illustrating a 6.7 cm × 4.9 cm × 5.4 cm coronary bypass graft pseudoaneurysm with compression of the main pulmonary artery (white arrow). (C) Invasive coronary angiogram demonstrating a SVG pseudoaneurysm originating in the mid-portion of the graft, with its margins depicted by the arrows. (D) Intra-operative photograph of the SVG pseudoaneurysm.

\* Corresponding author. Address: Lehigh Valley Health Network, Division of Cardiology, 1250 S Cedar Crest Blvd, Suite 310, Allentown, PA 18103 USA. Tel.: +1 610 402 3110; fax: +1 610 402 3112. E-mail address: lnm\_77@yahoo.com (L.N. Moran).