

From the President

Burnout versus wellness

Managing Opioids

Tips to help patients control pain responsibly.

Parking Changes for Via Marathon

Allow extra time for LVH-CC parking on Sept. 11.

Library Services

VisualDx now offers free CME credits.

The Retail Pharmacy View

New insulins and insulin adjuncts

Save the Date

21st Annual Nite Lites Gala.

Who's New?

Comings and goings of our medical and allied health staff.

Congratulations

Updates on certification achievements

Papers, Publications and Presentations

See what your colleagues are presenting.

Upcoming Seminars, Conferences and Meetings

Get dates, times and more.

DOWNLOAD
PROGRESS
NOTES
HIGHLIGHTS



▶▶ VISIT THE MEDICAL
STAFF SERVICES WEBSITE

READ PAST
ISSUES OF
PROGRESS
NOTES



▶▶ SUBMIT A STORY

Email rkrisher@staywell.com
by the 10th of each month.

From the President

Burnout versus

wellness

Burnout Versus Wellness

A recent AMA report revealed that 55 percent of health care providers are “burnt out,” an increase from 45 percent in 2011.¹ This data suggests that burnout, if not a threat, is at least endemic among health care providers today. Burnout is defined as “an experience of physical, emotional and mental exhaustion – it occurs when you feel overwhelmed, drained and are unable to meet constant demands.” Burnout is profound.



Joseph E. Patruno, MD
President, Medical Staff
Obstetrics and Gynecology
Gynecology/Primary Care OBGYN

For health systems, burnout is problematic on many levels. It is associated with lower patient satisfaction, overuse of resources, more costly care, worsened clinical outcomes and attrition. The effects of burnout on the individual practitioner include lower levels of empathy, early retirement, impairment and substance abuse, depression, and even suicide.

Though every specialty is likely affected by the phenomena, emergency medicine and general primary care specialties are more prone to burnout. In fact, any member of a health care team can, and will, be affected. The causes for burnout are diverse. Most physicians cited paperwork and administrative duties that interfere with direct patient care as leading causes of the problem in recent years. Other causes include insufficient compensation, difficult patients and colleagues, and inadequate work-life balance. I have felt the effects of burnout during my tenure as a physician. Yet even as the expectations continue to grow and our jobs become more complicated, I believe that burnout is modifiable.

We have been encouraged by the Institute of Medicine to aspire to accomplish the Triple Aim, an initiative that incorporates three goals: 1) enhance the patient experience, 2) improve population health and 3) reduce costs. Although providers buy into this model of optimization in health care, many still find it not truly attainable. Within LVHN, the implementation of Epic, the shift to ICD-10, demand for access and service, and changing reimbursement models have added to this feeling of unattainability.

Burnout may be the major variable that prevents the Triple Aim from being achieved. A recent article in the *Annals of Family Practice* proposes that without adding a fourth goal of “improving the work life of providers,” the Triple Aim may be unachievable.² In the end, mitigating burnout can only occur if we acknowledge it exists, figure out how to measure it and aggressively take steps to fix it – on both a system and a personal level.

System solutions to combat burnout are becoming more evident and available. Across LVHN, we have sought ways to better implement team documentation, reassign clinical duties, synchronize workflows and nurture team-based practice models. Strategically redistributing administrative duties and the optimization of Epic are also improving efficiency while preventing burnout. Continued enhancements and more effective utilization of our MyLVHN portal, by both providers and patients, will also yield benefits in areas of both productivity and care.

A byproduct of these tools for improvements in patient care is efficient providers who ideally get out of the clinical environment and to their homes faster. Balance in one’s personal life is also a critical

defense against burnout in the work setting. For myself, spending time with family, enjoying hobbies, being physically active, maintaining a spiritual connection and focusing on what is truly important to me in life remain my most effective tools in preventing burnout. As a sidebar, I encourage medical staff members to use their health dollar allotment for gym membership and/or to participate in LVHN's nationally recognized mindfulness program as an aid in your journey toward balance. And – by the way – vacation and PTO are valuable means to prevent burnout. Make sure you take it!

Burnout is real. Although we need to combat it, I would argue that we as a health system need to go a step further and proactively create and nurture an environment of wellness. We need to have open and honest discussions on the phenomenon and how it affects providers. We need to regularly monitor and evaluate metrics that correlate with burnout. This will aid in determining interventions to manage burnout, and also help prevent it from occurring in the first place.

If you have not already done so, please complete the burnout survey recently distributed via email by Joe Candio, MD, one of our network's most experienced clinicians and wellness champions. This anonymous survey ([link here](#)) will provide you with an opportunity to better assess your own state of well-being and allow us to better evaluate our medical staff's state of burnout. The results will help us gauge the environment, the emotional health within our system and the well-being of our providers. It will ultimately allow us to move forward with strategies for improvement.

I look forward to reporting back in the near future on our results and this very important subject. It's been said that "happy doctors make for happy patients." Let's do everything in our power to make this happen.

Joseph E. Patruno, MD

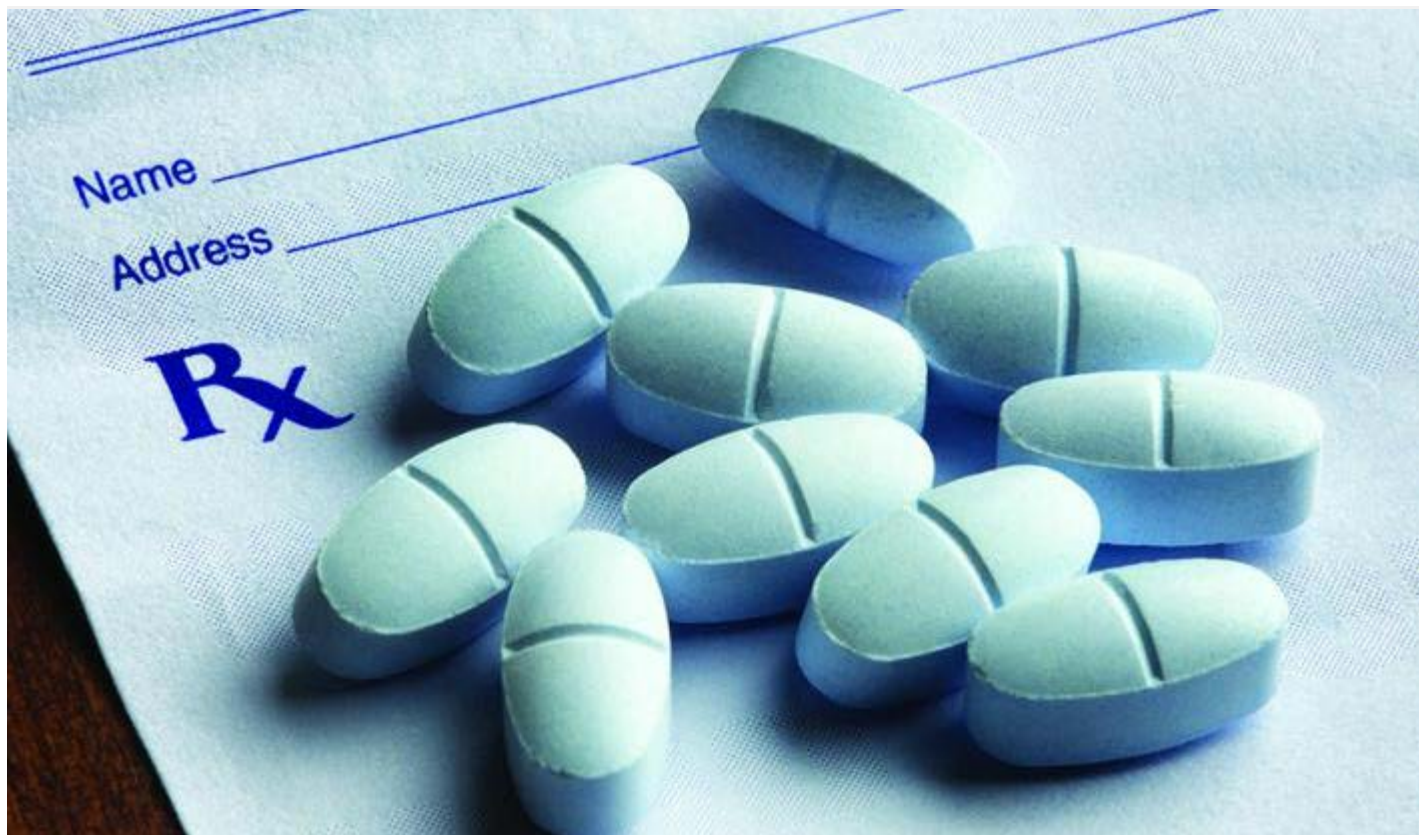
Medical Staff President

¹ Shanafelt TD et al. "Changes in burnout and satisfaction with work-life balance in physicians and the general US working population between 2011 and 2014." Mayo Clinic Proceedings. 2015. 90:12. 1600-1613.

^w Bodenheimer T et al. "From Triple to Quadruple Aim: care of the patient requires care of the provider." Annals of Family Medicine. 2014. 12:6. 573-576.

A handwritten signature in black ink, appearing to read 'Joseph E. Patruno', with a large, stylized initial 'J' and a horizontal line extending to the right.

Joseph E. Patruno, MD
Medical Staff President



Managing Opioids

As a provider, pain relief requests need to be addressed compassionately. So too does the intensity at which we treat pain. It has become increasingly apparent that the over-prescription of opioid pain medications can do more long-term harm than good. An estimated 3 to 40 percent of opioid users become addicted.¹ These medications can chain patients into an unending cycle of dependence, driving them to find sources of pain relief, whether legal or illegal.

How do we help patients control their pain with the lowest course of action possible while also identifying the subset of patients who need help to reduce their craving for opioids or other pain-blunting drugs? As providers we need to ask ourselves these questions:

- Who is at risk for addiction?
- How do we treat pain with alternatives to opioids?
- How do we treat with opioids with an aim to reduce a patient's reliance on them?

Pain management requests are very subjective. For some patients, pain is felt acutely. Their intense pain perception can be influenced by previous experience with pain, coping skills, heredity, energy level and more. Understanding your patients' perception of pain and their potential pain influencer(s) is important.

Across our LVHN primary care offices, the following strategies are being used. They have helped us create a foundation of knowledge about our patients, while demonstrating that our provider team will not write an opioid prescription without due diligence on our part.

- **Urine drug screening** – These tests are performed regularly to identify those who have detectable levels of pain medication in their urine. Across LVHN primary care practices, use of urine drug screenings has increased from 49 tests in 2013 to 663 in 2016.
- **Opioid prescribing data** – This information is derived from Epic reports. In practice, this information built awareness that helped us reduce prescriptions written for opioids by 25 percent.
- **Informed consent** – We ask patients if they have enough information about the pain medication to show they understand the risks associated with taking a prescribed, controlled substance. This is in addition to a controlled substance agreement they must also sign.
- **Awareness of co-occurring disorders** – Patients who have an existing disorder, such as alcoholism, depression, other mental illness, anorexia, post-traumatic stress disorder, anxiety or other existing addiction (heroin, dependence on prescription drugs, etc.), are at risk for developing an addiction to opioid medications.
- **Collaborative multidisciplinary committee** – Providers are able to submit de-identified cases to a group of peers for direction on care management and clinical decision making. This allows for input from pain management, primary care and behavioral health clinicians to assist anyone looking for support on challenging situations related to pain management or opioid prescribing.

For more information, visit the [LVH intranet](#) for a pain toolkit designed as a resource for LVHN primary care providers.

Find help for patients

Each county (either individually or through county-to-county partnerships) has established a single-county authority (SCA) to manage drug and alcohol abuse services. Three area SCAs are listed below with links to their service information and to medication take-back sites.

If your patient is a resident of a different Pennsylvania county, click here for [PA Department of Drug and Alcohol Programs](#).

Is your patient not a Pennsylvania resident? [Find treatment through the Substance Abuse and Mental Health Services Administration \(SAMHSA\)](#).

Berks County

- [Berks County drug and alcohol services](#)
- Prescription drug take-back locations, including [24 Berks County police departments](#)

Lehigh County

- [Lehigh County drug and alcohol services](#)
- Prescription drug take-back locations, including [LVH–Cedar Crest](#), [LVH–17th Street](#) and [10 Lehigh County police departments](#)

Northampton County

- [Northampton County drug and alcohol services](#)

- Prescription drug take-back locations, including [LVH–Muhlenberg](#) and [18 Northampton County police departments](#)

For questions or feedback on this article, contact [Jennifer Stephens, DO, LVPG Internal Medicine–3080 Hamilton Blvd., at 484-661-4650.](#)

¹ <https://www.drugabuse.gov/publications/research-reports/prescription-drugs/chronic-pain-treatment-addiction>

Quick Links

- Visit [Medical Staff Services Online](#)
- Return to [Progress Notes Home](#)
- Read [past issues of Progress Notes](#)

Progress Notes Highlights



This sheet captures highlights from the latest issue of Progress Notes.

[DOWNLOAD](#)

LVHN VIA MARATHON
TEMPORARY EVENT PARKING

LVHN Colleague Parking

EVENT SCHEDULE

5:30-6:30 a.m.

Runners arrive

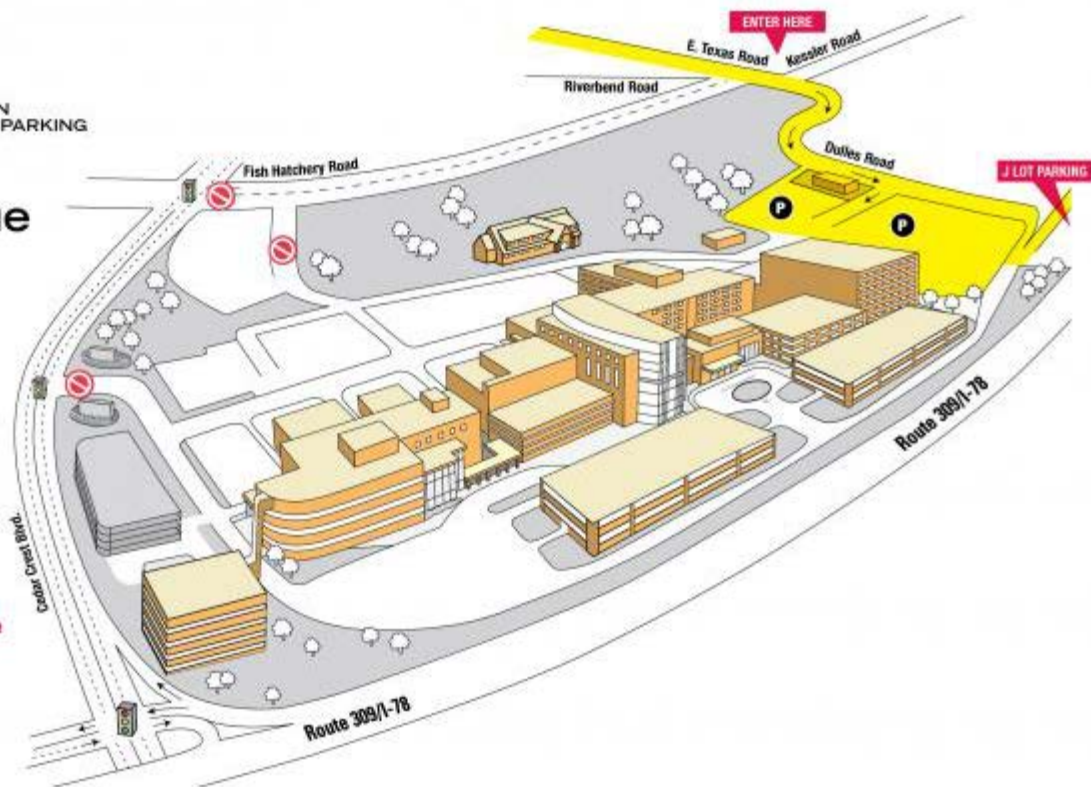
6:40 a.m.

Opening ceremonies,
road closures

7:10 a.m.

Race start

**Stay alert and enter
from E. Texas Road.
Do not use main entrance
or Fish Hatchery Road.**



Parking Changes for Sept. 11 Via Marathon

The starting line for the Sept. 11 LVHN Via Marathon is at LVH–Cedar Crest, which will add traffic to nearby roads and temporarily impact colleague parking. If you plan to arrive at LVH–Cedar Crest between 5 and 10 a.m. that morning, please allow extra travel time.

To expedite parking, please avoid the main entrance or Fish Hatchery Road. Instead, enter the campus through East Texas Road. The inner campus road and all corresponding parking lots located off Fish Hatchery Road will be closed to all through traffic. If you normally use one of these lots, please park in an alternate location, such as the J lot (located by the water tower), the employee lots behind the Kasych Family Pavilion, or the other two lots off Dulles Road, as shown in yellow on the map.

Thank you for doing your part to help make the LVHN Marathon for Via an enjoyable event for our community and the many out-of-town visitors who will participate in the race.

Quick Links

- Visit [Medical Staff Services Online](#)
- Return to [Progress Notes Home](#)
- Read [past issues of Progress Notes](#)

Library Services

VisualDx now offers free CME credits.

VisualDx Now Offers Free CME Credits

Library Services is pleased to announce that VisualDx now offers free continuing medical education credits. You can earn 0.5 AMA PRA Category 1 credit each time you build a differential or search for a diagnosis. Please note: You must have a personal account and be logged into it while searching in order to accrue potential CME credit. Once you are done searching, you must claim all potential CME credits.

From within the LVHN Network:

- Launch VisualDx from the LVHN Digital Library homepage using a network computer.
- Log in using your personal account username and password.
- Use VisualDx to look up diagnoses or build differentials – you will automatically accrue potential CME credits.

To complete and claim your CME credits:

- Sign in to VisualDx with your personal account username and password.
- Click on CME Certification on right side.
- Click on CME Home.
- Click on Complete All Potential Credits and follow the instructions.
- Click on Claim Credits and follow the instructions.

To see all available CE opportunities and information, visit the Continuing Education page on the Digital Library's Homepage ([click here](#)) or go to Find Fast/Library Services and click on "Continuing Education" on the left side.

If you have any questions on using any of the library resources, please contact Library Services at 610-402-8410.

Quick Links

- Visit [Medical Staff Services Online](#)
- Return to [Progress Notes Home](#)
- Read [past issues of Progress Notes](#)

Progress Notes Highlights



This sheet captures highlights from the latest issue of Progress Notes.

DOWNLOAD

The Retail Pharmacy

View New insulins and insulin adjuncts

New Insulins and Insulin Adjuncts

The market is flooded with various insulin types, now more than ever. To help avoid confusion, Health Spectrum Pharmacy has created a helpful chart that shows various new insulin types and their corresponding doses. Our hope is that it will give you a better idea of how to prescribe new insulin on the market.

Nine insulin brands are listed, along with their indication, dose, route of administration and any contraindications. Since these medications are new to the market, some of them may not be on insurance formularies, which means they most likely will require a prior authorization. This is something

to consider and be prepared for when prescribing these medications.

If you have questions, always feel free to ask a pharmacist or a medical information specialist from the company that manufactures the medication.

INSULIN	INDICATION	DOSE	ADMINISTRATION	CONTRAINDICATIONS
AFREZZA (human insulin)	Type 2 diabetes	<p>NAÏVE PATIENTS: Start with 4 units at mealtime</p> <p>PREVIOUS USERS FOLLOW SCALE:</p> <p>≤4 units = 4 units</p> <p>5-8 units = 8 units</p> <p>9-12 units = 12 units</p> <p>13-16 units = 16 units</p> <p>17-20 units = 20 units</p> <p>21-24 units = 24 units</p>	Inhalation	<p>-COPD/Asthma</p> <p>-Hypersensitivity to insulin</p>
APIDRA (insulin glulisine)	Type 1 and 2 diabetes	<p><u>TYPE 1</u></p> <p>INITIAL: 0.2-0.6 units/kg/day in divided doses</p> <p>MAINTENANCE: 0.5-1 units/kg/day</p>	Subcutaneous	<p>-Hypersensitivity to glulisine</p>

		<p>Non-obese: 0.4-0.6 units/kg/day</p> <p>Obese: 0.8-1.2 units/kg/day</p> <p><u>TYPE 2</u></p> <p>Add mealtime insulin alone with maintenance dose</p>		
BYETTA (exenatide)	Type 2 diabetes	<p>INITIAL: 5 mcg twice daily 60 minutes prior to mealtime</p> <p>MAINTENANCE: 10 mcg twice daily if needed</p>	Subcutaneous	<ul style="list-style-type: none"> -Diabetic ketoacidosis -Type 1 diabetics -CRCL <30 mL/min
BYDUREON (exenatide extended release)	Type 2 diabetes	2 mg once weekly	Subcutaneous	<ul style="list-style-type: none"> -Hypersensitivity to exenatide -Multiple endocrine neoplasia syndrome 2 (MENS2) -CRCL <30 mL/min
TRULICITY (dulaglutide)	Type 2 diabetes	<p>INITIAL: 0.75 mg once weekly, titrate up to 1.5 mg once weekly</p>	Subcutaneous	<ul style="list-style-type: none"> -Hypersensitivity to dulaglutide -Personal or family history of medullary thyroid carcinoma -MENS2

<p>TANZEUM (albiglutide)</p>	<p>Type 2 diabetes</p>	<p>INITIAL: 30 mg once weekly, may increase to 50 mg once weekly if needed</p>	<p>Subcutaneous</p>	<p>-Hypersensitivity to albiglutide</p> <p>-History or family history of medullary thyroid carcinoma</p> <p>-MENS2</p>
<p>TRESIBA (insulin degludec)</p>	<p>Type 1 and 2 diabetes</p>	<p><u>TYPE 1</u></p> <p>INITIAL: 0.2-0.6 units/kg/day in divided doses</p> <p>MAINTENANCE: 0.5-1 units/kg/day in divided doses</p> <p><u>TYPE 2</u></p> <p>NAÏVE: 10 units once daily</p> <p>EXPERIENCED: Use same unit dose as intermediate acting insulin</p>	<p>Subcutaneous</p>	<p>-Hypersensitivity to degludec</p> <p>-Pregnancy category C</p>
<p>TOUJEO (insulin glargine)</p>	<p>Type 1 and 2 diabetes</p>	<p><u>TYPE 1</u></p> <p>0.5-1 units/kg/day in divided doses</p> <p>NONOBESE: 0.4-0.6 units/kg/day</p>	<p>Subcutaneous</p>	<p>-Hypersensitivity to insulin glargine</p>

		<p>OBESE: 0.8-1.2 units/kg/day</p> <p><u>TYPE 2</u></p> <p>0.2 units/kg once daily</p>		
<p>VICTOZA (liraglutide)</p>	<p>Type 2 diabetes</p>	<p>INITIAL: 0.6 mg/day for 1 week, titrate up to 1.2 mg/day</p> <p>*May increase to 1.8 mg if glycemic response not achieved</p>	<p>Subcutaneous</p>	<p>-MENS2</p> <p>-Pregnancy category X</p> <p>-Hypersensitivity to liraglutide</p>

Article by the Health Spectrum Pharmacy interns of 2016. Organizer: Demi Rissmiller; contributors: Zac Koehler, Demi Rissmiller, Abby Stevens and Jake Weaver.

For questions or feedback on this article, contact [Jay Needle, RPh](#), manager, Health Spectrum Pharmacy, LVH–Muhlenberg, at 484-884-7004.

Quick Links

- Visit [Medical Staff Services Online](#)
- Return to [Progress Notes Home](#)
- Read [past issues of Progress Notes](#)

Progress Notes Highlights

This sheet captures highlights from the

Save the Date

21st Annual Nite Lites Gala.

21st Annual Nite Lites Black Tie Gala: 'All That Jazz at Nite Lites'

The 21st Annual Nite Lites Black Tie Gala "All That Jazz at Nite Lites," will be held on Saturday, Oct. 1, 5 p.m. to 12:30 a.m., on the campus of LVH–Muhlenberg.

Proceeds benefit the mission of LVHN.

For sponsorships reservations, contact Sandi Marsh, special events planner, at 484 884 9119 or sandra.marsh@lvhn.org.

Who's New?

Comings and goings of our medical and allied health staff.

Who's New — August 2016

Jump to: | [Medical staff new appointments](#) | [Resignations](#) | [Status change](#)

| [Change of practice/address](#) | [Practice address change](#) | [Name change](#)

| [Allied health staff new appointments](#) | [Resignations](#)

| [Additional practitioner category and supervising physician](#)

| [Additional supervising physician and group](#) | [Change of supervising physician](#)

| [Change of supervising physician and group](#)

| [Removal of supervising physician and group and addition of supervising physician and group](#)

| [Change of practice/address](#) | [Name change](#)

MEDICAL STAFF

New Appointments

Mini G. Abraham, MD

Hematopathology and Clinical Laboratory Medicine
(Health Network Laboratories – Daniel F. Brown, MD)
Health Network Laboratories
Lehigh Valley Hospital
Cedar Crest and I-78
PO Box 689
Allentown, PA 18105-1556
Phone: 610-402-8140 Fax: 610-402-1691
Department of Pathology and Laboratory Medicine
Division of Anatomic Pathology
Provisional Active
Appointment Date: 08/02/2016 Temporary Privileges: 07/18/2016



John H. Archer, MD

(Allentown Anesthesia Associates, Inc. – Debra M. Fullan, MD)
Allentown Anesthesia Associates, Inc.
Lehigh Valley Hospital–Muhlenberg
2545 Schoenersville Road
Kolb Pavilion – 3rd Floor
Bethlehem, PA 18017-7384
Phone: 484-884-2420 Fax: 484-884-4229
Department of Anesthesiology
Division of Pediatric Anesthesiology
Provisional Active
Appointment Date: 08/02/2016 Temporary Privileges: 07/18/2016



Christopher R. Becker, DO

(LVPG Neurology–1250 Cedar Crest – John E. Castaldo, MD)
LVPG Neurology–1250 Cedar Crest
Lehigh Valley Physician Group
Center for Advanced Health Care
1250 S. Cedar Crest Blvd.
Suite 405
Allentown, PA 18103-6224
Phone: 610-402-8420 Fax: 610-402-1689
Department of Medicine
Division of Neurology
Section of Neurocritical Care
Provisional Active
Appointment Date: 08/02/2016 Temporary Privileges: 08/01/2016



Anmol Bhambhvani, MD PHOTO

(LVPG Obstetrics and Gynecology–Valley Center Parkway – Joseph D. DeFulvio, DO)

LVPG Obstetrics and Gynecology–Valley Center Parkway
Lehigh Valley Physician Group
1665 Valley Center Parkway
Suite 130

Bethlehem, PA 18017-2352

Phone: 610-317-0208 Fax: 610-317-0210

Department of Obstetrics and Gynecology

Division of Gynecology/Obstetrics

Provisional Active

Appointment Date: 08/02/2016 Temporary Privileges: 08/01/2016



Aaron U. Blackham, MD

(LVPG Surgical Oncology–1240 Cedar Crest – Heiwon Chung, MD)

LVPG Surgical Oncology–1240 Cedar Crest
Lehigh Valley Physician Group
1240 S. Cedar Crest Blvd.
Suite 205

Allentown, PA 18103-6264

Phone: 610-402-7884 Fax: 610-402-8876

Department of Surgery

Division of General Surgery Surgical Oncology

Provisional Active

Appointment Date: 08/15/2016



Jill M. Blickley, DO

(LVPG Hospital Medicine at Muhlenberg – David B. Burmeister, DO)

LVPG Hospital Medicine at Muhlenberg
Lehigh Valley Physician Group
Lehigh Valley Hospital–Muhlenberg
2545 Schoenersville Road

Second Floor, Tower

Bethlehem, PA 18017-7384

Phone: 484-884-9677 Fax: 484-884-9297

Department of Emergency and Hospital Medicine

Division of Hospital Medicine

Provisional Active

Appointment Date: 08/02/2016 Temporary Privileges: 08/01/2016



Michael E. Cheung, MD

(LVPG Cardiology–1250 Cedar Crest – Ronald S. Freudenberger, MD)

LVPG Cardiology–1250 Cedar Crest
Lehigh Valley Physician Group

Center for Advanced Health Care
1250 S. Cedar Crest Blvd.
Suite 300
Allentown, PA 18103-6381
Phone: 610-402-3110 Fax: 610-402-3112
Department of Medicine
Division of Cardiology
Provisional Active
Appointment Date: 08/02/2016 Temporary Privileges: 08/01/2016



Antonio M. Costa, DO
(LVPG Family Medicine—Emmaus – Mark A. Wendling, MD)
LVPG Family Medicine—Emmaus
Lehigh Valley Physician Group
1040 Chestnut Street
Emmaus, PA 18049-1903
Phone: 610-966-5549 Fax: 610-967-0204
Department of Family Medicine
Provisional Active
Appointment Date: 08/02/2016 Temporary Privileges: 08/01/2016



Tanner S. Folster, DO
(LVH—M Emergency Medicine – David B. Burmeister, DO)
LVH—M Emergency Medicine
Lehigh Valley Physician Group
Lehigh Valley Hospital—Muhlenberg
2545 Schoenersville Road
Fifth Floor
Bethlehem, PA 18017-7300
Phone: 484-884-2888 Fax: 484-884-2885
Department of Emergency and Hospital Medicine
Division of Emergency Medicine
Provisional Limited Duty
Appointment Date: 08/02/2016 Temporary Privileges: 07/14/2016



Adam R. Haydt, DO
(LVPG Family Medicine—Hamburg – Robert B. Blauser, MD)
LVPG Family Medicine—Hamburg
Lehigh Valley Physician Group
700 Hawk Ridge Drive
Hamburg, PA 19526-9219
Phone: 610-562-3066 Fax: 610-562-3125



Department of Family Medicine

Provisional Active

Appointment Date: 08/02/2016 Temporary Privileges: 07/18/2016

Amber H. Iqbal, DO

(LVPG Hematology Oncology–1240 Cedar Crest – Eliot L. Friedman, MD)

LVPG Hematology Oncology–1240 Cedar Crest

Lehigh Valley Physician Group

1240 S Cedar Crest Blvd.

Suite 305

Allentown, PA 18103-6218

Phone: 610-402-9050 Fax: 610-402-9082

Department of Medicine

Division of Hematology–Medical Oncology

Provisional Active

Appointment Date: 08/02/2016 Temporary Privileges: 07/18/2016



Kristen L. Jones, DO

(LVPG Family Medicine–Emmaus – Mark A. Wendling, MD)

LVPG Family Medicine–Emmaus

Lehigh Valley Physician Group

1040 Chestnut Street

Emmaus, PA 18049-1903

Phone: 610-966-5549 Fax: 610-967-0204

Department of Family Medicine

Provisional Active

Appointment Date: 08/02/2016 Temporary Privileges: 07/18/2016



Mila H. Ju, MD

(LVPG Vascular Surgery–1259 Cedar Crest – James L. Guzzo, MD)

LVPG Vascular Surgery–1259 Cedar Crest

Lehigh Valley Physician Group

1259 S. Cedar Crest Blvd.

Suite 301

Allentown, PA 18103-6260

Phone: 610-402-9400 Fax: 610-402-9420

Department of Surgery

Division of Vascular and Endovascular Surgery

Provisional Active

Appointment Date: 08/02/2016 Temporary Privileges: 08/01/2016



Eunice Lee, MD

(LVPG Obstetrics and Gynecology–1245 Cedar Crest – Joseph D. DeFulvio, DO)

LVPG Obstetrics and Gynecology–1245 Cedar Crest

Lehigh Valley Physician Group

1245 S. Cedar Crest Blvd.

Suite 201
Allentown, PA 18103-6267
Phone: 610-402-4870 Fax: 610-402-4960
Department of Obstetrics and Gynecology
Division of Obstetrics/Gynecology
Provisional Active
Appointment Date: 08/15/2016



Florence J. Mauro, DO
(LVPG Family Medicine–Kutztown – Joseph P. Matus, DO)
LVPG Family Medicine–Kutztown
Lehigh Valley Physician Group
333 Normal Avenue
Kutztown, PA 19530-1640
Phone: 610-683-8363 Fax: 610-683-3532
Department of Family Medicine
Provisional Active
Appointment Date: 08/02/2016 Temporary Privileges: 07/18/16



Ashley M. McBrearty-Hindson, DO
(LVPG Hospital Medicine at Cedar Crest – Anthony P. Buonanno, MD)
LVPG Hospital Medicine at Cedar Crest
Lehigh Valley Physician Group
Lehigh Valley Hospital
Cedar Crest and I-78, PO Box 689
Third Floor Anderson Wing
Allentown, PA 18105-1556
Phone: 610-402-5369 Fax: 610-402-5959
Department of Emergency and Hospital Medicine
Division of Hospital Medicine
Provisional Active
Appointment Date: 08/02/2016



Vikranth S. Mulkanoor, DO
(LVPG Hospital Medicine at Cedar Crest – Anthony P. Buonanno, MD)
LVPG Hospital Medicine at Cedar Crest
Lehigh Valley Physician Group
Lehigh Valley Hospital
Cedar Crest and I-78, PO Box 689
Third Floor Anderson Wing
Allentown, PA 18105-1556



Phone: 610-402-5369 Fax: 610-402-5959
Department of Emergency and Hospital Medicine
Division of Hospital Medicine
Provisional Active
Appointment Date: 08/29/2016

Muhammad A. Rizvi, MD

(LVPG Hematology Oncology–1240 Cedar Crest – Eliot L. Friedman, MD)
LVPG Hematology Oncology–1240 Cedar Crest
Lehigh Valley Physician Group
1240 S. Cedar Crest Blvd.
Suite 305
Allentown, PA 18103-6218
Phone: 610-402-9050 Fax: 610-402-9082
Department of Medicine
Division of Hematology–Medical Oncology
Provisional Active
Appointment Date: 08/02/2016 Temporary Privileges: 08/01/2016



Behrang Saminejad, MD

LVPG Neurology–1250 Cedar Crest – John E. Castaldo, MD)
Lehigh Valley Physician Group
Center for Advanced Health Care
1250 S. Cedar Crest Blvd.
Suite 405
Allentown, PA 18103-6224
Phone: 610-402-8420 Fax: 610-402-1689
Department of Medicine
Division of Neurology
Provisional Active
Appointment Date: 08/02/2016 Temporary Privileges: 07/18/2016



Servet Tatli, MD

(Medical Imaging of Lehigh Valley, PC – Robert Kricun, MD)
Medical Imaging of Lehigh Valley, PC
Lehigh Valley Hospital
Cedar Crest and I-78
PO Box 689
Allentown, PA 18105-1556
Phone: 610-402-8088 Fax: 610-402-1023
Department of Radiology–Diagnostic Medical Imaging
Division of Diagnostic Radiology
Provisional Active
Appointment Date: 08/02/2016 Temporary Privileges: 07/14/2016



Andrew R. Tsen, MD

LVPG Neurosurgery–Muhlenberg – Chris A. Lycette, MD
LVPG Neurosurgery–Muhlenberg
Lehigh Valley Physician Group
1770 Bathgate Road
Suite 402
Bethlehem, PA 18017-7302
Phone: 484-884-8950 Fax: 484-884-8952
Department of Surgery
Division of Neurological Surgery/Spine Surgery
Provisional Active
Appointment Date: 08/02/2016 Temporary Privileges: 08/01/2016



Monali K. Vasekar, MD

(LVPG Hematology Oncology–1240 Cedar Crest – Eliot L. Friedman, MD)
LVPG Hematology Oncology–1240 Cedar Crest
Lehigh Valley Physician Group
1240 S. Cedar Crest Blvd.
Suite 401
Allentown, PA 18103-6218
Phone: 610-402-7880 Fax: 610-402-7881
Department of Medicine
Division of Hematology–Medical Oncology
Provisional Active
Appointment Date: 08/15/2016



Sallie M. Wemple, MD

(LVPG Hospital Medicine at Cedar Crest – Anthony P. Buonanno, MD)
LVPG Hospital Medicine at Cedar Crest
Lehigh Valley Physician Group
Lehigh Valley Hospital
Cedar Crest and I-78, PO Box 689
Third Floor Anderson Wing
Allentown, PA 18105-1556
Phone: 610-402-5369 Fax: 610-402-5959
Department of Emergency and Hospital Medicine
Division of Hospital Medicine
Provisional Active
Appointment Date: 08/02/2016 Temporary Privileges: 07/18/2016



Kari A. Whitley, MD

(LVPG Maternal Fetal Medicine–3900 Hamilton Blvd. – John C. Smulian, MD, MPH)
LVPG Maternal Fetal Medicine–3900 Hamilton Blvd.
Lehigh Valley Physician Group
3900 Hamilton Blvd.
Suite 201



Allentown, PA 18103-6122
Phone: 484-664-7555 Fax: 484-664-7550
Department of Obstetrics and Gynecology
Division of Maternal-Fetal Medicine/Obstetrics
Provisional Active
Appointment Date: 08/02/2016 Temporary Privileges: 07/18/2016

Lynn M. Wilson, DO

(LVPG Family Medicine–Whitehall – Gregory S. Tomcho, DO)
LVPG Family Medicine–Whitehall
LVPG Family Medicine–Whitehall
3691 Crescent Court East
Whitehall, PA 18052-3498
Phone: 610-434-9561 Fax: 610-434-5122
Department of Family Medicine
Provisional Active
Appointment Date: 08/02/2016 Temporary Privileges: 07/18/2016



Susan K. Yaeger, MD

(LVPG–Emergency Medicine – Andrew C. Miller, DO)
LVPG–Emergency Medicine
Lehigh Valley Physician Group
Lehigh Valley Hospital
Cedar Crest and I-78
PO Box 689
Allentown, PA 18105-1556
Phone: 484-862-3232 Fax: 484-862-3250
Department of Emergency and Hospital Medicine
Division of Pediatric Emergency Medicine
Provisional Active
Appointment Date: 08/15/2016



Resignations

Taffy A. Anderson, MD

Obstetrics and Gynecology
Obstetrics/Gynecology
(Taffy A. Anderson, MD)
Medical Administrative

Blake C. Bailey, DO

Emergency and Hospital Medicine
Emergency Medicine
(LVH–M Emergency Medicine)
Provisional Limited Duty

Elizabeth T. Corbo, MD

Pediatric

Pediatric Subspecialties

Neurology

(LVPG Pediatric Neurology–1210 Cedar Crest)

Active

Nicholas Dalessandro, DO

Emergency and Hospital Medicine

Hospital Medicine

(LVPG Hospital Medical at Cedar Crest)

Active

Michael N. Daniels, DO

Medicine

General Internal Medicine

(Michael N. Daniels, DO)

Limited Duty

Sumit Duggal, MD

Medicine

General Internal Medicine

(Afterhours Physician Coverage Group)

Limited Duty

Philip J. Dunn, DO

Medicine

General Internal Medicine

(LVH Department of Medicine)

Provisional Limited Duty

Dalya El Tawil, MD

Pediatrics

General Pediatrics

(LVPG–Pediatrics)

Provisional Active

Agei O. Enoh, MD

Medicine

General Internal Medicine

(LVH Department of Medicine)

Limited Duty

Eric R. Eustice, DO

Emergency and Hospital Medicine

Emergency Medicine
(LVH–M Emergency Medicine)
Provisional Limited Duty

Anthony J. Georges, MD

Surgery
Pediatric Surgical Specialties
Pediatric Surgery/Pediatric Trauma
(LVPG Pediatric Surgical Specialties–1210 Cedar Crest)
Active

Arnold R. Goldberg, MD

Family Medicine
(Lehigh Valley Family Health Center)
Active

Michael A. Kalil Jr., DO

Medicine
General Internal Medicine
(LVH Department of Medicine)
Provisional Limited Duty

Rachael E. Lipner, DO

Medicine
General Internal Medicine
(LVH Department of Medicine)
Limited Duty

Katie L. Mastoris, DO

Medicine
General Internal Medicine
(LVH Department of Medicine)
Limited Duty

David A. McLean, MD

Obstetrics and Gynecology
Maternal Fetal Medicine
(LVPG Maternal Fetal Medicine–3900 Hamilton Blvd.)
Active

Matthew J. Miles, DO

Medicine
General Internal Medicine
(LVH Department of Medicine)
Limited Duty

Kai H. Moy, MD

Medicine

General Pediatrics

(Pediatric Hospitalist at Pottstown Memorial Medical Center)

Active

Joselito A. Ouano, MD

Family Medicine

(LVPG Family Medicine–Blandon)

Active

Ryan A. Rogers, DO

Emergency and Hospital Medicine

Emergency Medicine

(LVH–M Emergency Medicine)

Provisional Limited Duty

Ryan D. Rogers, DO

Medicine

General Internal Medicine

(LVH Department of Medicine)

Limited Duty

Christine Saraceni, DO

Medicine

General Internal Medicine

(LVH Department of Medicine)

Limited Duty

Ashish A. Shah, DO

Medicine

Hematology-Medical Oncology

(LVPG Hematology Oncology–Muhlenberg)

Active

Donald M. Sledz, MD

Surgery

Urology

(Donald M. Sledz, MD, PC)

Active

Laura J. Spranklin, DO

Medicine

General Internal Medicine

(LVH Department of Medicine)

Limited Duty

Daniel Tseytlin, DO

Medicine

General Internal Medicine

(LVH Department of Medicine)

Provisional Limited Duty

Maria Vasiliadis, DO

Emergency and Hospital Medicine

Hospital Medicine

(LVPG Hospital Medicine at Cedar Crest)

Active

Isamu E. Yoshioka, MD

Emergency and Hospital Medicine

Hospital Medicine

(LVH–M Emergency Medicine)

Provisional Limited Duty

Status Change

Andre J. Burckhart, DO

Emergency and Hospital Medicine

Emergency Medicine

From: LVH–M Emergency Medicine

To: LVPG Emergency Medicine

From: Provisional Limited Duty

To: Provisional Active

Board Eligible – Emergency Medicine – Certification due by 06/23/2019

Donyell A. Doram, MD

From: Medicine

General Internal Medicine

To: Emergency and Hospital Medicine

Hospital Medicine

From: LVH Department of Medicine

To: LVPG Hospital Medicine at Muhlenberg

From: Provisional Limited Duty

To: Provisional Active

Board Eligible – Internal Medicine – Certification due by 06/23/2019

08/15/2016

Nicole C. Elliott, DO

Emergency and Hospital Medicine

Emergency Medicine

From: LVH–M Emergency Medicine
To: LVPG Emergency Medicine
From: Provisional Limited Duty
To: Provisional Active
Board Eligible – Emergency Medicine – Certification due by 06/23/2019

Sarah S. Park, DO

From: Medicine
General Internal Medicine
To: Emergency and Hospital Medicine
Hospital Medicine
From: LVH Department of Medicine
To: LVPG Hospital Medicine at Muhlenberg
From: Limited Duty
To: Provisional Active
Board Eligible – Internal Medicine – Certification due by 06/23/2019

Ryan M. Surmaitis, DO

Emergency and Hospital Medicine
Emergency Medicine
From: LVH–M Emergency Medicine
To: LVPG–Emergency Medicine
From: Provisional Limited Duty
To: Provisional Active
Board Eligible – Emergency Medicine – Certification due by 06/23/2019

Navid Tabibzadeh, DO

Medicine
Neurology
Addition of: Neurocritical Care
From: LVPG Neurology–1250 Cedar Crest
To: LVPG Neurocritical Care
Active
Board Eligible – Neurocritical Care – Certification due by 06/30/2019

Change of Practice/Address

Adam L. Leonetti, DO, DO

From: LVH–M Emergency Medicine
To: LVPG–Emergency Medicine
Lehigh Valley Physician Group
Lehigh Valley Hospital
Cedar Crest and I-78, PO Box 689
Allentown, PA 18105-1556
Phone: 484-862-3232 Fax: 484-862-3250

Gregory M. Stout, DO

From: LVPG Family and Internal Medicine–3080 Hamilton Blvd.

To: LVPG Hospital Medicine at Cedar Crest

Lehigh Valley Hospital

Cedar Crest and I-78, PO Box 689, Third Floor Anderson Wing

Allentown, PA 18105-1556

Tel: 610-402-5369 Fax: 610-402-5959

Practice Address Change

LVPG Psychiatry–1255 Cedar Crest

(Changed from 1250 S. Cedar Crest Blvd.)

1255 S. Cedar Crest Blvd.

Suite 2100

Allentown, PA 18103-6224

Tel: 610-402-3560 Fax: 610-402-3355

Providers:

Jaime Broesicke, CRNP

Wayne Dubov, MD

Amy Hao, MD

Chirag Kalola, MD

Leigh-Anne Piechta, DO

Jeffrey Radecki, MD

Jonna Trexler, PA-C

Kristin Varacalli, DO, MPH

Name Change

Felicia C. Johnson, DO changed to **Felicia C. Howard, DO**

LVPG Adult Psychiatry–Muhlenberg

Psychiatry

Adult Inpatient Psychiatry

ALLIED HEALTH STAFF

New Appointments

Nicholas Bevivino, CRLT

Certified Renal Lithotripsy Technologist

Keystone Mobile Partners

2701 Blair Mill Road

Suite 30

Willow Grove, PA 19090-1041
Phone: 215-675-9900 Fax: 215-675-4096
Supervising Physician: Daniel M. Silverberg, MD
Appointment Date: 08/02/2016 Temporary Privileges: 07/14/2016



Jennifer E. Brosky, RN

Registered Nurse
LVPG Cardiology—1250 Cedar Crest
Lehigh Valley Physician Group
Center for Advanced Health Care
1250 S. Cedar Crest Blvd.
Suite 300
Allentown, PA 18103-6381
Phone: 610-402-3110 Fax: 610-402-3112
Supervising Physician: Benjamin Sanchez Jr., MD
Appointment Date: 08/02/2016 Temporary Privileges: 07/14/2016



Valentine J.M. Croft, LPC

Licensed Professional Counselor
LVPG Adult and Pediatric Psychiatry—1259 Cedar Crest
Lehigh Valley Physician Group
1259 S. Cedar Crest Blvd.
Allentown, PA 18103-6376
Phone: 610-402-5900 Fax: 610-402-4650
Supervising Physician: Susan D. Wiley, MD
Appointment Date: 08/02/2016 Temporary Privileges: 08/01/2016



Stephen J. Denton, LCSW

Licensed Clinical Social Worker
LVPG Consultation Liaison Psychiatry—1251 Cedar Crest
Lehigh Valley Physician Group
1251 S. Cedar Crest Blvd.
Suite 202A
Allentown, PA 18103-6214
Phone: 610-402-5766 Fax: 610-402-5763
Supervising Physician: Edward R. Norris, MD
Appointment Date: 08/02/2016 Temporary Privileges: 07/14/2016



Kyle S. Durics

Emergency Department Scribe
ScribeAmerica

One City Center
PO Box 1806
Department of Emergency Medicine – 9th Floor
Allentown, PA 18105-1806
Phone: 484-862-3232 Fax: 484-862-3250
Supervising Physician: Richard S. MacKenzie, MD
Appointment Date: 08/02/2016 Temporary Privileges: 07/18/2016



Allyson L. Edwards, CRNP

Certified Registered Nurse Practitioner
LVPG Cardiology–1250 Cedar Crest
Lehigh Valley Physician Group
Center for Advanced Health Care
1250 S. Cedar Crest Blvd.
Suite 300
Allentown, PA 18103-6381
Phone: 610-402-3110 Fax: 610-402-3112
Supervising Physician: Apruva V. Vyas, MD
Appointment Date: 08/02/2016 Temporary Privileges: 07/18/2016



Cassandra J. Field

Emergency Department Scribe
ScribeAmerica
One City Center
PO Box 1806
Department of Emergency Medicine – 9th Floor
Allentown, PA 18105-1806
Phone: 484-862-3232 Fax: 484-862-3250
Supervising Physician: Richard S. MacKenzie, MD
Appointment Date: 08/02/2016 Temporary Privileges: 07/18/2016



Samantha E. Fulton

Graduate Genetic Counselor
Cancer Risk and Genetic Assessment Program
1240 S. Cedar Crest Blvd.
Suite 414
Allentown, PA 18103-6218
Phone: 610-402-9097 Fax: 610-402-2754
Supervising Physicians: Nicole M. Agostino, DO, Matthew W. Martinez, MD, and Philip M. Monteleone, MD
Appointment Date: 08/02/2016 Temporary Privileges: 07/14/2016



Glendaliz Griffin

Anesthesia Technical Assistant
Lehigh Valley Anesthesia Services, PC
Lehigh Valley Health Network
Lehigh Valley Hospital
Cedar Crest and I-78, PO Box 689
Central Utilities Building, 2nd Floor
Allentown, PA 18105-1556
Phone: 610-402-1374 Fax: 610-402-4230
Supervising Physician: Thomas M. McLoughlin, MD
Appointment Date: 08/02/2016 Temporary Privileges: 07/14/2016



Pamela S. Gupta, CRNP
Certified Registered Nurse Practitioner
LVPG Hospital Medicine at Cedar Crest
Lehigh Valley Physician Group
Lehigh Valley Hospital
Cedar Crest and I-78, PO Box 689
Third Floor Anderson Wing
Allentown, PA 18105-1556
Phone: 610-402-5369 Fax: 610-402-5959
Supervising Physician: Kaushik Patel, MD
Appointment Date: 08/02/2016 Temporary Privileges: 07/18/2016



Majd Helou
Emergency Department Scribe
ScribeAmerica
One City Center
PO Box 1806
Department of Emergency Medicine – 9th Floor
Allentown, PA 18105-1806
Phone: 484-862-3232 Fax: 484-862-3250
Supervising Physician: David M. Richardson, MD
Appointment Date: 08/02/2016 Temporary Privileges: 07/18/2016



Keith A. Holdren, PA-C
Physician Assistant-Certified
Adult and Child ENT Center
Specialty Physician Associates, LLC
2851 Baglyos Circle
Suite 201
Bethlehem, PA 18020-8033
Phone: 610-867-7134 Fax: 610-867-7108
Supervising Physician: David A. Prager, MD
Appointment Date: 08/02/2016 Temporary Privileges: 07/14/2016



Fieruz Y. Jabir

Emergency Department Scribe
ScribeAmerica
One City Center
PO Box 1806
Department of Emergency Medicine – 9th Floor
Allentown, PA 18105-1806
Phone: 484-862-3232 Fax: 484-862-3250
Supervising Physician: David M. Richardson, MD
Appointment Date: 08/02/2016 Temporary Privileges: 07/18/2016



Crystal M. Kemmerer, CRNP

Certified Registered Nurse Practitioner
LVPG Cardiology–1250 Cedar Crest
Lehigh Valley Physician Group
Center for Advanced Health Care
1250 S. Cedar Crest Blvd.
Suite 300
Allentown, PA 18103-6381
Phone: 610-402-3110 Fax: 610-402-3112
Supervising Physician: Raman S. Dusaj, MD
Appointment Date: 08/02/2016 Temporary Privileges: 08/01/2016



Jonathon M. Krautsack

Emergency Department Scribe
ScribeAmerica
One City Center
PO Box 1806
Department of Emergency Medicine – 9th Floor
Allentown, PA 18105-1806
Phone: 484-862-3232 Fax: 484-862-3250
Supervising Physician: Richard S. MacKenzie, MD
Appointment Date: 08/02/2016 Temporary Privileges: 07/18/2016



Melinda E. Liptak, PA-C

Physician Assistant-Certified
LVPG Orthopedics
Lehigh Valley Physician Group
Center for Advanced Health Care
1250 S. Cedar Crest Blvd.
Suite 110
Allentown, PA 18103-6224
Phone: 610-402-8900 Fax: 610-402-5656
Supervising Physician: Barry I. Berger, MD
Appointment Date: 08/02/2016 Temporary Privileges: 07/18/2016



Sharon M. Marino, RN

Registered Nurse
LVPG Cardiology—1250 Cedar Crest
Lehigh Valley Physician Group
Center for Advanced Health Care
1250 S. Cedar Crest Blvd.
Suite 300
Allentown, PA 18103-6381
Phone: 610-402-3110 Fax: 610-402-3112
Supervising Physician: Andrew D. Sumner, MD
Appointment Date: 08/02/2016 Temporary Privileges: 07/14/2016



Devon L. Olsson

Graduate Genetic Counselor
Cancer Risk and Genetic Assessment Program
Lehigh Valley Health Network
1240 S. Cedar Crest Blvd.
Suite 414
Allentown, PA 18103-6218
Phone: 610-402-9097 Fax: 610-402-2754
Supervising Physicians: Nicole M. Agostino, DO, Matthew W. Martinez, MD, and Philip M. Monteleone, MD
Appointment Date: 08/02/2016 Temporary Privileges: 07/14/2016



Christian D. Snyder

Emergency Department Scribe
ScribeAmerica
One City Center
PO Box 1806
Department of Emergency Medicine – 9th Floor
Allentown, PA 18105-1806
Phone: 484-862-3232 Fax: 484-862-3250
Supervising Physician: David M. Richardson, MD
Appointment Date: 08/02/2016 Temporary Privileges: 07/18/2016



Jennifer L. Young, PA-C

Physician Assistant-Certified
LVPG Hospital Medicine at Cedar Crest
Lehigh Valley Physician Group
Lehigh Valley Hospital
Cedar Crest and I-78, PO Box 689
Third Floor Anderson Wing
Allentown, PA 18105-1556
Phone: 610-402-5369 Fax: 610-402-5959
Supervising Physician: Zhe Chen, MD
Appointment Date: 08/02/2016 Temporary Privileges: 07/18/2016



Stephanie N. Zulic, RN

Registered Nurse

Supervising Physician: Andrew D. Sumner, MD

LVPG Cardiology–1250 Cedar Crest

Lehigh Valley Physician Group

Center for Advanced Health Care

1250 S. Cedar Crest Blvd.

Suite 300

Allentown, PA 18103-6381

Phone: 610-402-3110 Fax: 610-402-3112

Appointment Date: 08/02/2016 Temporary Privileges: 07/14/2016



Resignations

Angela P. Acevedo, PA-C

Physician Assistant-Certified

(LVPG–Emergency Medicine)

Marianne Adam, CRNP

Certified Registered Nurse Practitioner

(LVPG Family Medicine–Blandon)

Lawrence P. Bauer, CRT

Certified Respiratory Therapist

(Youngs Medical Equipment)

Rama Eskander

Emergency Department Scribe

(ScribeAmerica)

Deborah E. Feden, CRNP

Certified Registered Nurse Practitioner

(Lehigh Valley Physicians Practice)

Erica L. Kleinle, CRNP

Certified Registered Nurse Practitioner

(LVPG Obstetrics and Gynecology–Valley Center Parkway)

Hannah M. McNally, PA-C

Physician Assistant-Certified

(LVPG Hematology Oncology–1240 Cedar Crest)

Ray M. Moussa

Emergency Department Scribe

(ScribeAmerica)

Elizabeth A. Moyer, LPC

Licensed Professional Counselor

(LVPG Adult and Pediatric Psychiatry–1259 Cedar Crest)

Tara L. Namey

Certified Genetic Counselor

(Cancer Risk and Genetic Assessment Program)

Sahil B. Pandya

Emergency Department Scribe

(ScribeAmerica)

James S. Shahoud

Emergency Department Scribe

(ScribeAmerica)

Khrystyna Splavnyk, PA-C

Physician Assistant-Certified

(LVPG Cardiac and Thoracic Surgery–1250 Cedar Crest)

Besher Tolaymat

Emergency Department Scribe

(ScribeAmerica)

Ana L. Weaver, CRNA

Certified Registered Nurse Anesthetist

(Lehigh Valley Anesthesia Services, PC)

Additional Practitioner Category and Supervising Physician

Jacob A. Zimmer

From: Pacemaker/ICD Technician

To: Mapping Support Specialist/Pacemaker/ICD Technician

(St. Jude Medical – Babak Bozorgnia, MD – For Pacemaker/ICD Technician)

Addition of: Hari P. Joshi, MD – For Mapping Support Specialist

Additional Supervising Physician and Group

Joan G. Finno, CRNP

Certified Registered Nurse Practitioner

(LVPG–Emergency Medicine – Anthony T. Werhun, MD)

Addition of: LVPG Family Medicine–Fogelsville – Vanessa J. Eiswerth, DO

Elizabeth A. Schofield

Genetic Counselor

(LVPG Maternal Fetal Medicine–Montage – William E. Scorza, MD)

Addition of: LPVG Pediatric Hematology Oncology–Muhlenberg – Philip M. Monteleone, MD

Change of Supervising Physician

Ellen L. Fairchild, CRNP

Certified Registered Nurse Practitioner

(LVPG–Pediatrics)

From: Jarret R. Patton, MD

To: Nasrideen M. Noor, MD

Kristin M. Flora, CRNP

Certified Registered Nurse Practitioner

(LVPG–Pediatrics)

From: Jarret R. Patton, MD

To: Nasrideen M. Noor, MD

Courtney M. Kazmierczak, CRNP

Certified Registered Nurse Practitioner

(LVPG–Pediatrics)

From: Jarret R. Patton, MD

To: Anita C. Daniels-Rodriguez, MD

Nancy T. Maulick, PA-C

Physician Assistant-Certified

(LVPG Family Medicine–Blandon)

From: Joselito A. Ouano, MD

To: Christine K. Block, MD

Megan K. Wukitsch, CRNP

Certified Registered Nurse Practitioner

(LVPG–Pediatrics)

From: Jarret R. Patton, MD

To: Nasrideen M. Noor, MD

Change of Supervising Physician and Group

Scarlet B. Lichtenwalner, CRNP

Certified Registered Nurse Practitioner

From: Pain Specialists of Greater Lehigh Valley, PC – Bruce D. Nicholson, MD

To: OAA Orthopaedic Specialists – Jeffrey R. McConnell, MD

Removal of Supervising Physician and Group and Addition of Supervising Physician and Group

Nathan P. Fenstermacher, PA-C

Physician Assistant-Certified

(LVPG Neurology–1250 Cedar Crest – Vitaliy Koss, MD)

Removal of: LVPG Hospital Medicine at Cedar Crest – Shadi Jarjous, MD

Addition of: LVPG Neurocritical Care – Preet M. Varade, MD

Change of Practice/Address

Carla C. Kalymun, CRNP

From: LVPG Family and Internal Medicine–3080 Hamilton Blvd.

To: LVPG Hospital Medicine at Cedar Crest

Lehigh Valley Hospital

Cedar Crest and I-78, PO Box 689, Third Floor Anderson Wing

Allentown, PA 18105-1556

Tel: 610-402-5369 Fax: 610-402-5959

Name Change

Nicole R. Sansone, PA-C changed to **Nicole R. Beidler, PA-C**

LVPG Hospital Medicine at Muhlenberg

Emergency and Hospital Medicine

Hospital Medicine

Congratulations

Updates on certification achievements

Congratulations: August 2016

- [Kevin Anbari, MD, MBA](#), and [James Weis, MD](#), both of OAA Orthopaedic Specialists, have passed the 2016 Maintenance of Certification Recertification Examination and fulfilled all of the requirements of the American Board of Orthopaedic Surgery to renew their certifications.

Papers, Publications and Presentations

See what your colleagues are presenting.

Papers, Publications and Presentations: August 2016

- Matthew Cook, DO, of the department of emergency medicine, co-authored an article, “Severe cardiomyopathy after huffing Dust-Off™. It was published May 25 online ahead of print in Case Reports in Emergency Medicine.
- David Burmeister, DO, and Eric Bean, DO, of the department of emergency medicine, and Rolando Rios, MD, a senior emergency medicine resident, co-authored an article, “Complications of atrial myxoma.” It was published June 6 online ahead of print in the American Journal of Emergency Medicine.
- Elizabeth Evans, DO, Terrence Goyke, DO, Stephanie Cohrac, DO, MPH, Jessica Eynor, DO, Christopher Ward, MD, Lauren Semler, MS, Stephen Dusza, DrPH, Marna Rayle Greenburg, DO, MPH, and Bryan Kane, MD, of the department of emergency medicine, co-authored an article, “Compliance with Centers for Disease Control guidelines for ED patients with sexually transmitted diseases.” It was published June 13 online ahead of print in the American Journal of Emergency Medicine.
- Marna Rayl Greenberg, DO, MPH, Michael Nguyen, MD, Bernadette Porter, BS, Anita Kurt, PhD, RN, Stephen Dusza, DrPH, and Bryan Kane, MD, of the department of emergency medicine; Elizabeth Moore, DO, Brian Stello, MD, and Arnold Goldberg, MD, of the department of family practice; and Robert Barraco, MD, MPH, of the department of surgery, co-authored an article, “Perceived fall risk and functional decline: gender differences in patient's willingness to discuss fall risk, fall history, or to have a home safety evaluation.” It was published in the Yale Journal of Biology and Medicine, Volume 89, Issue 2, June 2016.
- William Miller, MD, of the department of family medicine, co-authored an article, “A national evaluation of a dissemination and implementation initiative to enhance primary care practice capacity and improve cardiovascular disease care: the ESCALATES study protocol.” It was published in Implementation Science, Volume 11, Issue 1, June 2016.
- Donald Levick, MD, MBA, chief medical information officer, and Michael Sheinberg, MD, medical director informatics, co-authored an article, “The consequences of electronic health record adoptions for physician productivity and birth outcomes.” It was published in International Labor Review, Volume 69, Issue 4, August 2016.

Upcoming Seminars, Conferences and Meetings Get dates, times and more.

Upcoming Seminars, Conferences and Meetings

Department of Education Conferences

- August 11 – Child Maltreatment Hurts Us All
- September 8 – GI Symposium
- September 30 – Eighth Annual Fleming Infection Prevention and Infectious Diseases Symposium
-

October 22 – Pain Management Symposium

- December 1 – 2016 Fleming Palliative Medicine Symposium

For more information, call 610 402 2277, option 1, or visit <https://go.activecalendar.com/lvhn-doe>.

Medical Grand Rounds

- September 13 – The Opioid Epidemic: What Happened and Where We Are Now, with Joseph Garbely, DO, FASAM, medical director, and Michael McCormick, DO, fellow in addiction medicine, both of Caron Treatment Center

The department of medicine will offer this Grand Rounds presentation beginning at noon in the auditorium at LVH–Cedar Crest. It will be videoconferenced to the VTC Room at LVH–17th Street and ECC Room C at LVH–Muhlenberg

For more information, contact [Nancy Schmidt](#) in the department of medicine at 484-862-3180.

Pediatric Grand Rounds

- August 2 – Opioid Epidemic: Resources Available in Lehigh County, with J. Layne Turner, MPA, drug and alcohol administrator, Lehigh County; Kasych Family Pavilion ECC Room 8 at LVH–Cedar Crest
- August 9 – PICU topic, with Sabrina Logan, MD, pediatric intensivist; Kasych Family Pavilion ECC Room 8 at LVH–Cedar Crest
- August 16 – Mental Health in Pediatrics, with Mary Margaret Gleason, MD, Children’s Hospital of Pennsylvania; Kasych Family Pavilion ECC Room 7 at LVH–Cedar Crest
- August 23 – Discussion regarding the range of services and supports available to children with disabilities in Pennsylvania, with Robin Oplinger, senior advocate, children’s team – Disability Rights Pennsylvania; Kasych Family Pavilion ECC Room 7 at LVH–Cedar Crest
- August 30 – To be announced

The department of pediatrics holds Grand Rounds on Tuesdays, beginning at 8 a.m., at the locations noted.

For more information, contact [Cari Coelho](#) in the department of pediatrics at 484-862-3131.

Department of Dental Medicine 41st Annual Continuing Dental Education Program

- September 7 – Child Abuse and Reporting for Dental Professionals
- September 7 – Radiation Safety
- October 14 – Restorative Materials: Update 2016
- November 4 – Life is Your Best Medicine
- November 4 – The Nutrition Prescription
- January 4 – The Winner in You: Raising the Bar on Patient Care
- February 9 – Six “Best Practice” Principles for Success

All sessions will be held in the LVHN–Mack Boulevard Auditorium, 1200 Mack Blvd., Allentown, PA 18105. Times vary.

For more information, visit www.lvhn.org/cont_ed_events or www.lvhn.org/dentaeducationprogram.

Quick Links

- Visit [Medical Staff Services Online](#)
- Return to [Progress Notes Home](#)
- Read [past issues of Progress Notes](#)

Progress Notes Highlights



This sheet captures highlights from the latest issue of Progress Notes.

[DOWNLOAD](#)

