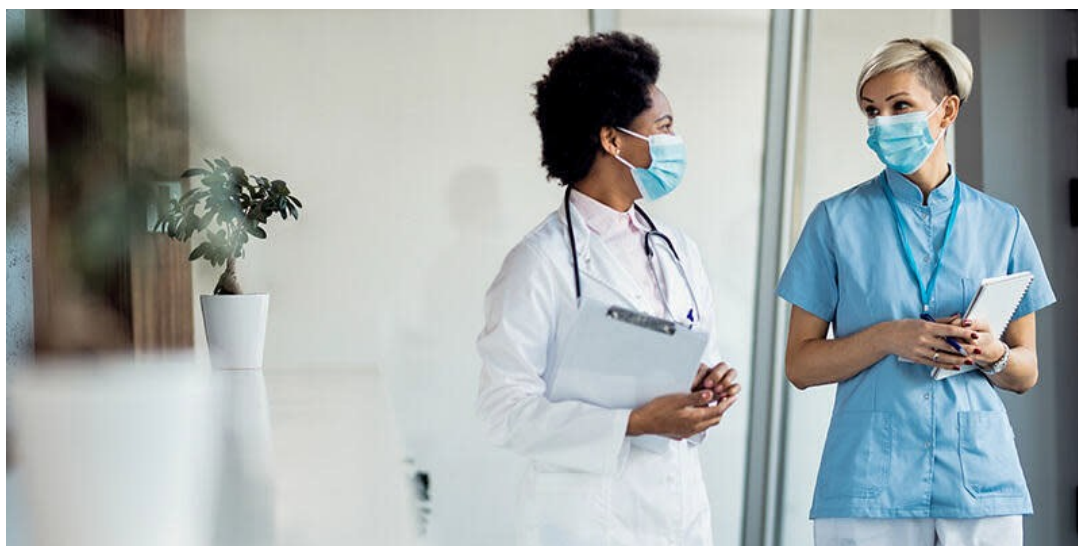




LVHN WEEKLY | YOUR WRAP-UP OF THE WEEK'S NEWS FROM LVHN



Updated “Return to Work” Policies for Colleagues Recovering From COVID-19

New guidelines, based on CDC guidance, get colleagues back to work sooner.

[Read more →](#)

Visitation Policy Adjustments Aimed At Keeping Pace With COVID-19 Surge

One visitor at a time at the patient bedside is the newest guidance.

[Read more →](#)



Expanded COVID-19 Booster and Third Shot Guidance

Learn the latest eligibility recommendations and where and when the vaccine is available.

[Read more →](#)



Changes to LVHN ExpressCARE Walk-in Hours

Instead of going to our ExpressCARE locations, consider one of our virtual options.

[Read more →](#)



Attend an Actions Against Racism and Advancing Equity Council Discussion

The discussion takes place virtually on Jan. 17. Learn how to register.

[Read more →](#)



Enjoy Free Boxed Lunches

Learn where you can get your boxed lunch.

[Read more →](#)



Why Was Your Holiday Gift Taxed? The IRS Requires It

Learn why gifts at work are taxed and how your latest gift appears in your paycheck.

[Read more →](#)



Service Anniversary List – January 2022

Happy anniversary to these colleagues celebrating a career milestone at LVHN.

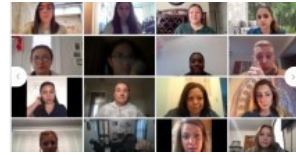


[Read more →](#)

Welcome New Colleagues Who Attended Connections Dec. 27

We have 185 new colleagues in the LVHN family.

[Read more →](#)



Welcome Laura Kohler, MHA, BSN, RN

She joins LVHN as Administrator of Integrated Care Coordination.

[Read more →](#)



Watch LVHN Center for Healthcare Education Virtual Topping Off Ceremony

View the virtual event on Tuesday, Jan. 11, at 11 a.m. on LVHN's Facebook page.

[Read more →](#)



Project ECHO: What is that?!? An Antibigram

Attend a presentation on Jan. 21 at noon.

[Read more →](#)



LVHN Announces Plan to Form One Ambulance Company With Existing EMS Services

It will be Lehigh Valley Health Network–Emergency Medical Services (LVHN–EMS).

[Read more →](#)



Perkasie Newlywed Survives 'Widow-Maker' Heart Attack

After collapsing at home, Bucks County welder survived due to leading-edge medical care.

[Read more →](#)



Heart Attacks: Next Generation Testing at LVHN Helps Rule Them In or Out Sooner

High-sensitivity troponin is a telltale sign of heart injury.

[Read more →](#)





Updated “Return to Work” Policies for Colleagues Recovering From COVID-19

New guidelines, based on CDC guidance, get colleagues back to work sooner.

LVHN Insider

Tuesday, January 4, 2022

Due to the significant surge of COVID-19 in our community and the tremendous impact on our staffing, LVHN is updating its “Return to Work After COVID-19 Guidelines” based on new guidance from the Centers for Disease Control and Prevention (CDC). The changes will help colleagues who test positive for COVID-19 return to work sooner if their symptoms have improved and they obtain a negative test result. Our goal is to manage earlier return to work in the safest manner possible for our colleagues and patients. The following guidelines are effective Jan. 3, 2022.

Guidelines for symptomatic and asymptomatic colleagues who test positive for COVID-19

The following guidelines apply to colleagues (boosted, vaccinated, and unvaccinated) working in either:

- A patient-facing role OR
- A role that requires on-site presence*

Colleagues must meet all of the following criteria to return to work earlier than 10 days:

- No fever greater than 100.4 degrees F for at least 24 hours without the use of fever-reducing (antipyretic) medication
- Improvement in all symptoms (if any)
- At least five days have passed since symptoms first appeared
- Obtain a negative COVID-19 PCR or antigen test result on day five of illness or later
 1. Employee health services will place the order for COVID-19 testing in Epic. **You must notify employee health services of your positive test in order**

to determine the appropriate dates of follow-up testing and to receive the forms needed to return to work.

2. Colleagues who need testing for return to work will be directed to one of these testing locations beginning Tuesday, Jan. 4, 2022 (NOTE: These sites are not available for travel testing or for testing of family members):
 - Coordinated Health, 1503 N. Cedar Crest Blvd., Allentown, Monday-Friday, 8 a.m.-4:30 p.m.
 - Coordinated Health, 2300 Highland Ave., building A, Bethlehem, Monday-Friday, 8 a.m.-5 p.m., Saturday and Sunday, 8 a.m.-5 p.m.
 - Coordinated Health, 26 Station Circle, Hazle Township, Monday-Friday, 8 a.m.-4:30 p.m.
 - Schuylkill Medical Plaza, 200 Schuylkill Medical Plaza, Pottsville, Monday-Friday, 8 a.m.-4:30 p.m., Saturday and Sunday, 8 a.m.-noon
 - Coordinated Health, 511 VNA Blvd., East Stroudsburg, Monday-Friday, 8 a.m.-4:30 p.m.
3. Results of tests performed by HNL Lab Medicine will be available in MyLVHN. HNL will try to expedite results as quickly as possible. However, due to unprecedented testing volumes, HNL cannot guarantee 24-hour turnaround times.
4. Colleagues may also use the results from a rapid antigen test performed at home. Proof of a negative home test, such as a photo of the test result, will be provided to employee health services when the colleague submits their "Return to Work Post-COVID Attestation Form" (see instructions below).
5. If the colleague has a positive test on day five, the colleague must retest on day seven before he or she will be cleared to return to work. Employee health services will place the order for this test in Epic.
6. If the colleague has a positive test on day seven, but is either asymptomatic or has resolving symptoms, the colleague will not need further testing and can be cleared to return to work on day 10.

***Colleagues who can work remotely should follow prior guidelines and only return to on-site work after isolation for 10 days if fever has resolved and other symptoms have improved.** This will minimize unnecessary testing at a time when our labs are facing tremendous volumes.

Instructions for early return to work:

- **Colleagues no longer need to be seen in employee health services for return to work.**
- Complete the required "Return to Work Post-COVID Attestation Form" provided to you by employee health services.
- On the day of your planned return to work, email the attestation to your local employee health services office using the email address for your location below:

1. Employee_Health_Pocono@lvhn.org
 2. Employee_Health_CedarCrest@lvhn.org
 3. Employee_Health_Hazleton@lvhn.org
 4. Employee_Health_Schuylkill@lvhn.org
 5. Employee_Health_Muhlenberg@lvhn.org
- If you used a home test, you will be required to show proof of the negative test and attest to the results. A photograph of the test result is acceptable and can be included in your email to employee health services.
 - **Colleagues cleared to return to work earlier than 10 days after onset of symptoms are required to do the following:**
 1. Wear a surgical mask at work until all symptoms have resolved and at least 10 days have passed since the start of illness. After symptoms have resolved, wear the proper face mask for your role as per LVHN's PPE guidelines.
 2. Maintain social distancing when eating or drinking or do so alone.
 3. Complete the Conversa COVID-19 screening before each work shift by visiting <https://clinic.conversahealth.com/conversation/MjJwLTM3OTI> or texting "lehigh" to 83973.
 4. Self-monitor for the development of symptoms or worsening of symptoms and report these to employee health services.
 - **Immunocompromised colleagues and those with severe disease (for example, requiring hospitalization) or persistent/protracted symptoms will not be able to return to work earlier than 10 days.** Isolation will continue for at least 10 days. Employee health services will assist with determining the duration of isolation and clearing these colleagues for return.

Guidelines for colleagues with COVID-like symptoms who have a negative COVID-19 test

These colleagues may return to work when they meet all of the following criteria:

- No fever greater than 100.4 degrees F for at least 24 hours without the use of fever-reducing (antipyretic) medication
- Negative COVID-19 test
- Improvement in symptoms

Instructions to return to work for those with symptoms caused by other viral illnesses:

- Call employee health services and leave a voicemail stating your full name, SUI, date of negative test result and date you are returning to work. **You may return to work without receiving a call back from employee health services.**
 1. LVH–Cedar Crest: 610-402-8869, option 2
 2. LVH–Muhlenberg: 484-884-7318, option 2
 3. LVH–Hazleton: 570-501-4788
 4. LVH–Schuylkill: 570-621-4351

5. LVH–Pocono: 570-476-3779

- Follow LVHN's PPE guidelines when you return to work.
- If your symptoms do not improve or worsen, follow up with your primary care provider for evaluation and treatment. If you are out of work for more than three days, clearance is required by your treating provider and you must be cleared to return to work by employee health services.

If you develop symptoms consistent with COVID-19 while at work, notify your manager and leave work. Make arrangements to be tested. Do not report to employee health services.



Visitation Policy Adjustments Aimed At Keeping Pace With COVID-19 Surge

One visitor at a time at the patient bedside is the newest guidance.

LVHN Insider

Thursday, January 6, 2022

Lehigh Valley Health Network is taking additional steps to keep patients and colleagues safe as the COVID-19 pandemic and its now dominant omicron variant continue to increase hospitalizations.

Visitation rules now stipulate only one person is allowed at the patient bedside at a time, though patients may designate up to two visitors for their entire hospital stay. Visitation hours remain

9 a.m.-1 p.m. and 4-8 p.m.

Visitors who have a possible COVID infection, or who have tested positive for COVID, should not come into an LVHN facility unless they are seeking care for a severe illness or life-threatening condition. In addition, those recently exposed to COVID-19 (within the past 5 days) also should avoid visitation.

As a reminder, one visitor is also the limit for an adult emergency room patient, and that visitor must follow the same guidelines for masking and eating as the inpatient visitation

rules. Masks should be worn at all times, and eating and drinking should be limited to café areas.

The latest visitation guidelines can always be found at [LVHN.org/visitation](https://www.lvhn.org/visitation).



Expanded COVID-19 Booster and Third Shot Guidance

Learn the latest eligibility recommendations and where and when the vaccine is available.

LVHN Insider

Thursday, January 6, 2022

The Food and Drug Administration (FDA) has issued Emergency Use Authorization for several new booster initiatives and a third shot for younger people, which have been supported by the Centers for Disease Control and Prevention (CDC).

Booster shots now available for children age 12-15: Children who received the Pfizer-BioNTech booster shot at least five months ago are now eligible for their booster by appointment only at all Lehigh Valley Health Network (LVHN) COVID-19 vaccine clinic locations.

Third shot available for children age 5-11 who are immunocompromised: A third shot of the Pfizer-BioNTech vaccine also is available to children between the ages of 5 and 11 who are immunocompromised.

Shorter interval for Pfizer-BioNTech booster: Those who completed the two-dose series of Pfizer-BioNTech vaccine are now eligible for a booster shot five months after their second shot, rather than six months. This change does not apply to people who received the Moderna mRNA vaccine or Johnson & Johnson (J&J) vaccine. Moderna boosters are still recommended six months after the completion of the initial vaccine series. Those who received an initial single dose of the J&J vaccine should be boosted with either Moderna or Pfizer two months after their initial shot.

Lehigh Valley Health Network (LVHN) began offering the boosters and third shots for these age groups Thursday, Jan. 6.

“Preliminary research has shown that booster shots help strengthen our protection against new variants of COVID-19, like omicron,” said [J. Nathan Hagstrom, MD](#), Chief of Pediatrics at Lehigh Valley Reilly Children’s Hospital. “Data suggest that levels of protection from the initial series can decrease with time. Offering the Pfizer booster shot at five months instead of six months after the initial series provides significant reduction in risk of acute illness and other complications of COVID-19.”

While teenagers and children are less likely to be severely affected by COVID-19 than individuals in older age groups, they can still become infected, experience symptoms from the disease and need to be hospitalized. “Last week, the highest number of children from our network tested positive for COVID-19: more than 1,300 children. This is more than twice what we saw the first week of December,” said Hagstrom. “And at Lehigh Valley Reilly Children’s Hospital, hospitalizations for children with COVID also have doubled since November. Vaccinations, booster shots and third shots for those who are eligible are the best ways kids can be protected from severe COVID infection.”

Possible side effects of booster shots

The most common side effects of the booster vaccine are mild and resolve within a few days. They include:

- Pain, redness and swelling at the injection site
- Fatigue
- Headache
- Muscle or joint pain
- Chills
- Swollen lymph nodes in the underarm

While there have been cases of myocarditis (inflammation of the heart muscle) and pericarditis (swelling of the outer lining of the heart) in this age group (mainly in boys) after vaccination, these are rare side effects. With prompt medical treatment and rest, these cases typically resolve quickly.

The FDA took these cases into account when considering EUA for this age group and determined that the benefits of the booster significantly outweigh the risk.

“The risk for myocarditis and pericarditis is much higher if these children develop COVID-19,” Hagstrom said. “In addition, they are at risk of developing other medical complications from COVID-19, including life-threatening conditions like MIS-C and some of the chronic symptoms of long COVID.”

How to schedule

There are two easy ways to schedule an appointment for your booster:

- Go to MyLVHN, the health network's patient portal:
[Sign In](#) [Sign Up](#)
 - *You may need to request proxy access to your child's MyLVHN account to schedule your child's appointment. To do so, please contact your child's provider. If your child does not have an LVHN provider, please call 888-402-LVHN (5846).*
- Call our COVID-19 Vaccine Hotline at 833-584-6283 (833-LVHN-CVD). We're open Monday-Friday, 8:30 a.m.-5:30 p.m.

For more vaccination information, visit [LVHN.org/vaccines](https://www.lvhn.org/vaccines).

Changes to LVHN ExpressCARE Walk-in Hours

Due to high patient volumes at all ExpressCARE locations, walk-in hours for each location may change

By **Maggie Wurst**
January 3, 2022



Over the last few weeks, the number of patients coming to Lehigh Valley Health Network (LVHN) [ExpressCARE](#) locations has increased significantly, with some locations having average wait times of multiple hours.

Because of this, all ExpressCARE locations may need to adjust their operating hours and close to walk-ins earlier than normal. This will allow us to spend the time needed with each patient and provide thorough evaluation and treatment to those in our care.

[Alternatives for care](#)

Instead of going to our ExpressCARE locations, individuals should consider one of our virtual options, which include LVHN [ExpressCARE Video Visits](#), [E-visits](#) or our 24/7

nurse line (888-402-LVHN). They offer the same level of care and evaluation from the comfort of your home, and can be scheduled for the following conditions:

- COVID-19 symptoms
- Cough, cold or flu
- Ear pain
- Muscle or bone pain
- Nausea, vomiting or diarrhea
- Pinkeye
- Seasonal allergies
- Sore throat
- Urinary problems
- Animal bites
- Cold sores
- Insect bites
- Rashes
- Lower back pain
- Neck pain
- Minor sprains

COVID-19 testing

Whether you're symptomatic or asymptomatic, you need to have a script in order to get a COVID-19 test. The easiest and fastest way to get a script is by staying home and scheduling a virtual visit. Virtual options to obtain a script include:

- **Nurse line:** Call 888-402-LVHN (5846) and select option 4.
- **LVHN ExpressCARE Video Visit:** Visit [MyLVHN.org](https://www.mylvhn.org) or open your [MyLVHN](https://www.mylvhn.org) app. Click on the menu, then select "Schedule ExpressCARE Video Visit."
- **E-Visit (a detailed questionnaire visit submitted to a provider):** Visit [MyLVHN.org](https://www.mylvhn.org) or open your [MyLVHN](https://www.mylvhn.org) app. Click on the menu, then select "E-Visits."
- **Contact your primary care provider (PCP):** Call your PCP's office, visit [MyLVHN.org](https://www.mylvhn.org) or open your [MyLVHN](https://www.mylvhn.org) app. If you use MyLVHN.org or the MyLVHN app, click on "Messages", then select "Send a message" and follow the prompts.

Once you have obtained a script, there are different testing locations depending on your symptoms:

- [Patients with symptoms](#)
 - [Patients without symptoms](#)
-



Attend an Actions Against Racism and Advancing Equity Council Discussion

The discussion takes place virtually on Jan. 17. Learn how to register.

LVHN Insider

Wednesday, January 5, 2022

LVHN's Actions Against Racism and Advancing Equity (AARAE) Council invites you to attend a discussion to share your experiences regarding inclusion and equity in observance of Martin Luther King Jr. Day on Jan. 17, 2022.

The AARAE Council will host "Colleague Voice Conversations" throughout the year for colleagues to share individual experiences and thoughts on diversity and inclusion at LVHN. For the discussion on Jan. 17, participants will be answering the question, "What is your dream for racial equity at LVHN?" in memory of King's historic "I Have a Dream" speech.

These one-hour discussions will be hosted virtually via Webex and are open to all colleagues.

Colleagues can register using this

link: <https://lvhnoe.wufoo.com/forms/x1l6xgzo1em60lz/>

NOTE: Each discussion will be limited to the first 25 participants.

If you have questions, please contact DEIAdmin@lvhn.org with "MLK Day Session" in the subject line.



Enjoy Free Boxed Lunches

Learn where you can get your boxed lunch.

LVHN Insider

Monday, January 3, 2022

We hope you enjoyed the free meal LVHN provided to colleagues on Dec. 30. In a continued effort to bring more joy to the workplace, LVHN will provide free boxed lunches to colleagues Jan. 4 through Jan. 12.

Free boxed lunches will be available to all colleagues in the following locations:

- LVH–Cedar Crest
- LVH–17th Street
- LVH–Muhlenberg
- LVH–Hazleton
- LVH–Schuylkill
- LVH–Pocono
- LVHN–Tilghman
- LVH–Hecktown Oaks
- Coordinated Health Allentown
- Coordinated Health Bethlehem
- LVHN–Mack Boulevard

Colleagues may pick up their free boxed lunch in the cafeteria of the above locations beginning at 11 a.m. while supplies last. Managers may request department delivery in advance by calling 610-969-2850 for hospital locations with volunteers.

Colleagues who work evening or night-shift hours should visit their local cafeteria for details about getting a boxed lunch.

Your hard work is appreciated and valued, and these free meals are LVHN's way of saying, "Thank you for all you do!"



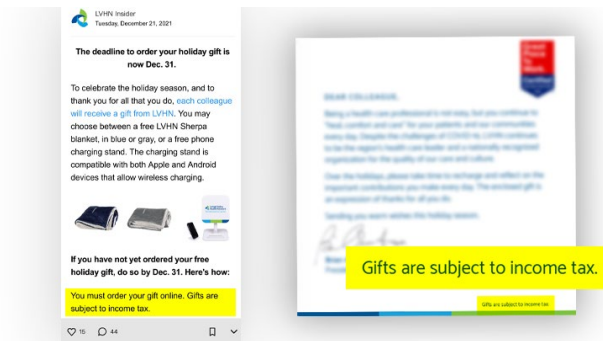
Why Was Your Holiday Gift Taxed? The IRS Requires It

Learn why gifts at work are taxed and how your latest gift appears in your paycheck.

LVHN Insider

Wednesday, January 5, 2022

In December, all colleagues had the opportunity to order a gift from LVHN; either a blanket or cellphone charger. Unfortunately, IRS rules require organizations to tax gifts to employees. The decision to tax the gift was not made by LVHN leadership. Rather, it is something we are required to do. We made sure to tell colleagues about the tax on LVHN Insider when the gift was offered and on the insert that came with your gift (see below).



How the gift appears on your paycheck

- The value of the gift (not how much you pay in taxes) appears on your paycheck under “wages.” The value of the gift is factored into your overall compensation for tax purposes.
- The explanation under wages states “non-cash fringe benefit.”
- The amount of tax paid differs for each colleague based on your individual tax situation. The more you earn, the higher your tax.

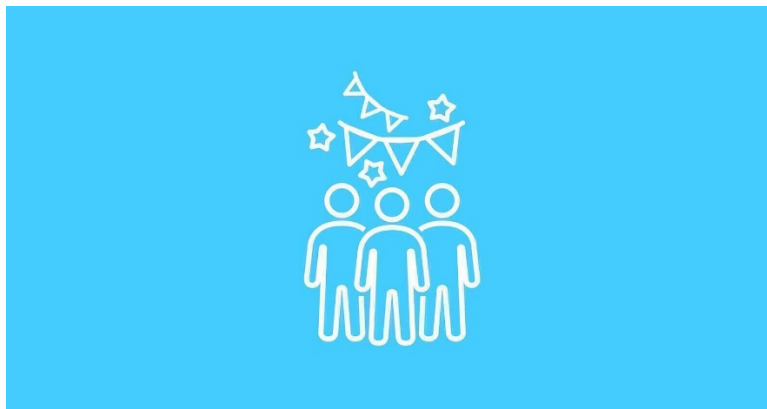
This chart shows how much a colleague who earns \$1,600 would pay in taxes normally (column A), and how much more the colleague would pay in taxes with the value of the blanket (column B) or cellphone charger (column C) added into their taxable income. Remember, tax rates vary depending on each colleague’s tax situation and state of residence.

		A	B	C
	Tax rate	Regular pay	Pay with value of blanket	Pay with value of cellphone charger
Regular pay		1,600	1,600	1,600
Non-cash fringe benefit			23.50	17.40
Total taxable income		1,600	1,623.50	1,617.40
Federal tax	15.00%	240.00	243.52	242.61
Social Security tax	6.20%	99.20	100.66	100.28
Medicare tax	1.45%	23.20	23.54	23.45
PA state withholding tax	3.07%	49.12	49.84	49.65
PA local withholding tax	1%	16.00	16.23	16.17
PA unemployment tax	.06%	.96	.97	.97
Total tax		428.48	434.76	433.13

Facts and updates about shipping

- Colleagues were not charged for shipping.
- **Didn't get your gift yet?** The blue fleece blankets are on back order due to their popularity among colleagues. Some of them have not yet been shipped. Thanks for your patience.
- **Have questions about your order?** Email the vendor at allentown@thinkcgc.com

We understand the IRS's rules are confusing, but be assured that we are only taxing gifts to comply with the tax laws. We hope this clears up any questions you may have. Above all, we hope you enjoy your gift!



Service Anniversary List – January 2022

Happy anniversary to these colleagues celebrating a career milestone at LVHN.

LVHN Insider

Wednesday, January 5, 2022

Happy anniversary to these colleagues celebrating a career milestone at LVHN in January 2022. Congratulate them on their years of service.

45 Years

Arnette Hams, Registered Nurse

Marie Snyder, EMR Doc Mgmt Specialist

Joseph Stank, Pharmacy Tech

40 Years

Donna Christman, Admin Partner

Robert Heimbach, Sterile Processing Technician

Kelliann Herman, Sr. Student Affairs Specialist

Emma Jean Saxon, Pharmacy Tech

35 Years

Connie Bittner, Scheduling Coord

Deborah Brown, Registered Nurse

Kenton Clay, Reg Respiratory Therp

Sandra Cusatis, Clerk Typist

Patricia Horvath, Registered Nurse

Diane Kocsis, Clinical Informaticist

Janet Mccann, IP Coding Analyst I Hosp Based

James Sharp, Maintenance Worker

30 Years

Kelly Altemose, Transfer Center Coord

Kimberly Badillo, Mgr Svc Excellence

Brenda Capone, Phlebotomist

Linda Cornman, Reg Respiratory Therp

Thomas Gazzana, Medical Assistant Phys Prac

Mary Jo Halye, Inpatient LPN

Tracy Hayes, Clin Quality Analyst

Denise Henninger, RN Phys Prac

Lori Karol, Registered Nurse

Janice Santee, Dir Behav Hlth Rev Cycle Mgmt

Stephen Tutko, Housekeeping Aide

25 Years

Susan Baldwin, Supv Registration

Noel Brouse, Physician

Wanda Caraballo, Radiology Support Tech

Jeanann D'Alessio, RN Oncology Phys Prac

Laurie Fox, Secretary

Douglas Hamlin, Pharmacy Tech-Cert

Margaret Hoffman-Terry, Physician

Carolyn Lenik, Coord Clinical Documentation Prog

Amy Parsons, Practice Manager

Kenneth Reichenbach, CRNP General

Suzanne Sofish, RN Phys Prac

Emily Zayas, Insurance Follow-up Rep

20 Years

Carmel Castagna, Certified Registered Nurse Anesthetist

Joan Cernobyl, Admin Partner

Melinda Craigle, Insurance Follow-up Rep

Ann Cress, Housekeeper

Kerri-Ann Foley, Ultrasonographer

Lisa Gaydoscik, HIM EMR Data Content Analyst

Deborah Hager, Technical Partner

Joanne Jones, Diabetes Edu Spec

Heather Koch, RN PDM I Evng/Night

Jean Livengood, LPN Phys Prac

Donna Lynn, Mgr Netw Supply Mgmt

Wanda Maldonado, Guest Services Representative

Kelly Metzgar, Home Hlth Centrl Int RN

Robert Misevicius, Messenger

Joseph Schell, Certified Registered Nurse Anesthetist

Josephine Sloan, HUC Nursing Assistant

Cynthia Spence, Office Coord (Phys Prac)

Chad Traub, Reg Respiratory Therp

15 Years

Diane Bickelman, Employee Health Leave Spl

Cindy Bontempo, Registered Nurse

Melanie Broyan, Dir OP Registration

Martha Carbone, Speech/LangPathologist

Amanda Clark, Dosimetrist II

Donna Clark, Physical Therapist

Grace Dimarco, Practice Support Spec

Janene Ditzler, Diabetes Edu Spec - Inp

Michele Dzomic, Pediatric Procedure Nurse

Michael Ehrig, Practice Leader

Zoila Ferreira, Office Coord (Phys Prac)

Stephen Finlay, RN WKND Day

Sarah Frailey, Registered Nurse

Tammy Gallagher, Patient Care Mgr

Alba Garcia, Payment Posting Spec

Yocelyn Garcia, Patient Services Rep

Robert Gehman, Mgr Network and Comm

Jyoti Gopal, Physician

Kathy Grayek, Scheduling Coord

Dana Hacker, Admin Med Staff Svcs

Karen Hartzell, Supv Collections

Clinton Holumzer, Practice Leader

Andrew Johnston, Physical Therapist

Amy Keeler, PA General

Melissa Latham, MRI Technologist

Larry Levin, Physician

Laura Long, RN WKND Night

Annette Mann, Physician

Scott Mayes, Network and Comm Expert

Wayne McWilliams, Physician

Rosemary Meriano, Patient Care Mgr

Patricia Merwine, Supply Coord

Carol Michaels, Administrator Care Coordination

Barbara Morici, PA General

James Mullan, Mental Health Technician

Michele Murdoch, Scheduling Coord

Justyne Nolen, Practice Support Spec

Nainesh Patel, Physician

Amy Pena, PA General

Lourdes Petko, Lead Coding Integrity Analyst

Amy Pollick, PA General

Lois Reidenbach, Cln Research Coord I

Tiayra Reidnauer, Patient Care Mgr

Dave Romancheck, Subject Matter Expert

Jill Rothermel, Registered Nurse

Jon Sartori, PA Cardio Thoracic

Jolene Scatton, Patient Care Coord

Christine Sheckler, Nurse Auditor

Brian Silfies, Sr Clin/Rev Apps and Supp Expert

Carole Skipper, Patient Services Rep

Sarah Smith, Physical Therapist

Kimberly Soleymani, PA General

Ryan Sutliff, Systems Analyst/Programmer-Spec Pharm

Travis Thrower, Periop Liaison

Hugo Twaddle, Physician

Robert VanIngen, RN PICC

Cammi Weeber, OR Diag Technologist

James Wertz, Physician

Dominika Wierzbowska, Registered Nurse

10 Years

Holly Achey, RN WKND Night

Nadeem Ahmad, Physician

Samer Alkhuja, Physician

Jennifer Allen, Practice Leader

Maria Babula, Site Manager

Morgan Barker, Technical Partner

Jillian Bartholomew, Peri Sonographer III

Scott Beman, Physician

Marion Bender, Registration Rep

Robert Biggs, Practice Leader

Kristina Boccuti, RN Phys Prac

Richard Boorse, Physician

Jill Bortz, RN Phys Prac

Jon Brndjar, Physician

Laura Brzozowski, Insurance Follow-up Rep

Gregory Buchman, Nuc Med Technologist

Wendy Burnish, Patient Services Rep

Mary Cameron, CardiacUltrasound Tech

Joseph Cardarelli, Customer Supp Analyst

John Cerimele, Registered Nurse - OR

Paul Cesanek, Physician

Cecelia Clark, Medical Assistant Phys Prac

Tara Delich, RN Home Care

Jana Dieterich, PA General

Elizabeth Duh, Registered Nurse

Patti Ebert, Sr Authorization Spec

Mary Finegan, Radiation Therapist II

Nancy Fisch, Practice Manager

Pamela Foltz, Registered Nurse

Denise Ford, RN Per Diem Day

Terree Frey, Authorization Specialist

Jonathan Goldner, Physician

Thomas Harrison, Assistant/Associate Med Dir

Lillian Hendry, RN PDM I Day

Amanda Hengstenberger, Technical Partner

Kristina Houck, Registered Nurse

Debra Hunkele, Transition of Care Associate

Paul Jani, Sr AV Technician

Phyllis Johnson, Med Records Clerk

Hari Joshi, Physician

Mary Karounos, Clinical Coordinator Phys Prac

Cathleen Keegan-Pursell, Diabetes Edu Spec - Inpt

William Kesselring, Physician

Kelly Knoble, Registered Nurse

Elizabeth Kochenash, CRNP General

Christine Kooker, Bed Mgt Scheduler

Mary Lattig, Insurance Follow-up Rep

Maria Leindecker, Reimbursement Analyst

Angelene Liggitt, Practice Director

John Mannisi, Physician

Debra McGlade, Medical Secretary

Patricia Mika, Med Records Clerk

Cynthia Montafia, CardiacUltrasound Tech

Valerie Moore, Patient Services Rep

Ruth Odenwelder, Revenue Cycle Specialist Phys Prac

Carrie Olson, PA General

Shelly Oplinger, RN Phys Prac

Yvette Padilla, Provider Based Coding Analyst II

Eric Pecuch, Patient Care Mgr

George Persin, Physician

Chester Pientka, Sr Reimbursement Fin Analyst

Sarah Possimato, Patient Services Rep

Jacqueline Priest, RN Phys Prac

Alexandra Raldiris, Medical Assistant Phys Prac

Tanya Remaly, Patient Services Rep

Alina Reynolds, Certified Registered Nurse Anesthetist

Genieva Rodriguez, Patient Services Rep

Teresa Romano, Physician

Elizabeth Rosario, PRO Self-Pay Collection Spec

Albert Sarno, Physician

Kelly Schadler, CRNP General

Sarah Schippang, Patient Services Rep

Jenna Schnovel, Patient Care Coord

Mayuri Sedani, Physician

Khemraj Sedani, Physician

Catherine Serena, Social Worker MSW

Lisa Singer, Insurance Coord

Kenneth Skorinko, Physician

Jessica Smith, Patient Services Rep

John Solomon, Sr Clin/Rev Apps and Supp Analyst

Kimberly Spering, CRNP OACIS

Karen Stump, Clinical Coordinator LPN Phys Prac

Deborah Sundlof, Physician

Kaitlyn Sutliff, Clin Sales Rep

Whitney Thomas, Provider Based Coding Analyst II

Laurie Tullock, Medical Assistant Phys Prac

Beth Turoscy, CRNP General

Anthony Urbano, Physician

Elizabeth Walker, Registered Nurse

Margaret Weaver, Provider Based Coding Analyst II

Maria Whitfield, Registered Nurse

Maria Witkowski, RN Per Diem Day

Margaret Wright, Patient Services Rep

Vincent Zambri, Customer Supp Analyst

Patricia Zubey, Insurance Coord

5 Years

Nour Achi, Diag Tech WKND Day

Stephanie Albert, Scheduling Coord

Januaira Almanzar, Sr Scheduling Coord

Isabelis Ameglio, Medical Assistant Phys Prac

Jeffrey Amundson, RN WKND Day

Scott Appnel, Manager Business Development

Latearra Baskerville, Reg Spec

Christine Biege, VP Patient Care Svcs

Andrea Bonett, Mgr Registration

Dann Braid, Program Dir Endocrinology

Alicia Briggs, Registered Nurse

Nicholas Brogan, Interv Rad Tech

Jeanette Cahill, CRNP General

Joe Cibelli, Technical Partner

Stephanie Cleary, Radiation Therapist II

Jesenia Colon, EKG Technician

Trisha Connolly, Scribe

Samuel Cornetto, Patient Transporter

Melissa Crenko, Technical Partner

Sepideh Daymean, RN WKND Day

Raquel Dejesus, Reg Spec

Tracy Delong, Clinical Manager

Anna Domday, PA General

Francis Drogowski, CardiacUltrasound Tech

Jo Durfey, Cash Reconciliation Spec

Kenita Edwards, Technical Partner

Ann Erb, Medical Assistant Phys Prac

Susan Ettwein, Admin Partner

Jed Fegley, Anesthesia Tech

Lisa Ficarro, Mgr Radiology

Edward Frick, Physician

Joseph Ginda, Suprv PatientTrprtSvcs

Laura Goodson, Database Admin Expert

Paula Gutsie, Secretary

Kathy Gwillim, Sr Clin/Rev Apps and Supp Analyst

Christopher Hager, Clin Staff Pharmacist

Ashley Hein, Pharmacy IV Tech-Cert

Kelly Hertzog, Registration Team Lead

Naomi Hiraldo, Medical Assistant Phys Prac

Kyle Horton, Preparedness Spec

Nicholas Hoster, Exer Physiologist

Christina Hough, RN WKND Day

Paula Hudanich, Patient Services Rep

Sally Hull, Director Clin Svcs

Mohammed Jafar, MRI Technologist

Cassondra Johns, Medical Assistant Phys Prac

Veronica Judd, LPN

Albert Jurowicz, Certified Registered Nurse Anesthetist

David Kissinger, Reg Respiratory Therp

Marissa Klein, Medical Secretary

Ann Malantic-Lin, Physician

Abraham Maldonado, PFS Customer Service Agent

Shelley Martinez, CRNP General

Tracey Mathews, EMR Education Liaison

Karen Mikovitch, Office Coord (Phys Prac)

Eric Miller, Diag Tech WKND Day

Stephen Molitoris, VP Reimbursement & Revenue

Elizabeth Morales, Patient Services Rep

Renasis Morel, Case Management Asst

Varvara Napkora, Reg Resp Therp Per Diem

Christine Nicolosi, Clinical Coordinator Phys Prac

Lynn Oliver, Patient Services Rep

Peter Ondrasik, RN Oncology Phys Prac

Rupal Patel, Occup Therapist PDM

Tami Pellegrino, Social Worker MSW

Lauren Popivchak, PA General

Shauna Quirk, Radiation Therapist II

Mark Rebimbas, Clin/Rev Apps and Supp Expert

Francesca Reyes, Revenue Cycle Educator

Maria Reyes, Medical Assistant Phys Prac

Anthony Richards, Housekeeper

Natasha Rodriguez, 402-CARE Rep

Maria Rodriguez, MRI Technologist

Brianna Rodriguez, Medical Assistant Phys Prac

Lisa Rodriguez, Financial Coord Oncology II

Georgene Rogers, Technical Partner

Shirllie Rosario, Trained MedInterpreter

Marsha Sadusky, Registered Nurse - OR

Heather Samy, Patient Services Rep

Pamela Sarjue, Precertification Specialist (Oncology)

Amber Scheidler, Bed Mgt Scheduler

Jessica Sitko, Mental Health Technician

Mark Smith, Sr. Rev Cycle Bus Analyst

Nicholas Smull, Cln Team Ld Athletic Training

Olivia Spetalas, Registered Nurse

Laurie Swanson, RN Phys Prac

Martha Teel, Software Training Specialist

Lucile Thelusmond, CRNP General

Pauline Tran, Healthcare Business Intell Analyst Sr

Nicole Tully, Technical Partner

Lynn Turner, Chief Human Resources Officer

Anne Usuka, Physical Therapist HC

Anthony Valasakos, OR Diag Technologist

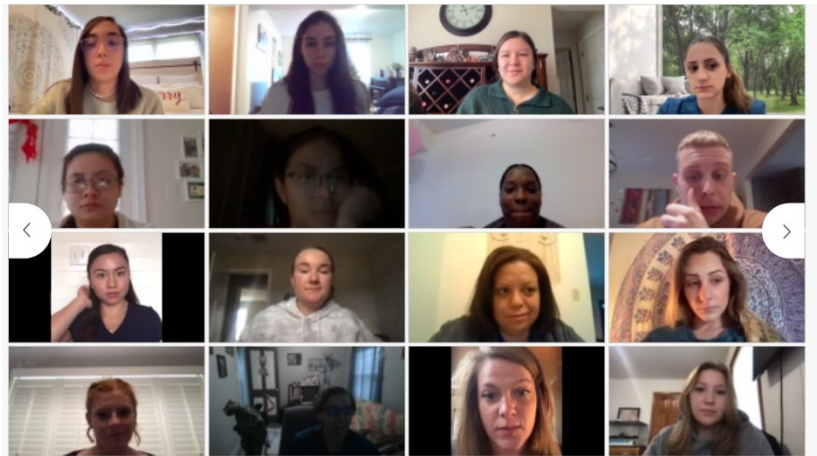
Irma Valles Rivera, Technical Partner

Iasha Waite, Patient Services Rep

Sherida Walker, Medical Assistant Phys Prac

Chelsea Winkler, Practice Ops Transformation Spec

Angela Zawisza, Physician



Welcome New Colleagues Who Attended Connections Dec. 27

We have 185 new colleagues in the LVHN family.

LVHN Insider

Monday, January 3, 2022

Carissa Abel, Physician Recruiter

Katherine Acosta, Reg Spec

Megan Ahrensfield, Phlebotomist

McKenna Amey, PSNE- Professional Student Nurse Extern

Michael Arndt, Critical Care Transport EMT

Breeanna Aseng, Medical Assistant Phys Prac

Carrie Askew, Medical Assistant Phys Prac

Annie Badasarian, Dir Development, Major Gifts

Kyle Baker, Group Health Processing Supv

Morgan Barilla, Patient Transporter PDM

Tiffany Bayer, Director Clin Svcs

Tristan Beckford, Health Educator

Daniel Besecker, CriticalCareTransportParamedic

Malgorzata Bilik, Registered Nurse

Richard Boligitz, Courier

Donaja Booker, Medical Assistant Phys Prac

Brianna Bowman, Technical Partner

Victor Brozusky, Development Services & Gift Officer

Jonathan Cabot, Patient Services Rep

Alexis Cabrera, PSNE- Professional Student Nurse Extern

Reena Eza Calizo, RN PDM I Evng/Night

Giana Caporale, PSNE- Professional Student Nurse Extern

Marianne Chapman , Trained MedInterpreter

Zara Chavdarova, PSNE- Professional Student Nurse Extern

Charlotte Cherry, PSNE- Professional Student Nurse Extern

Sadie Chikotas, Technical Partner

Emily Clouse, PSNE- Professional Student Nurse Extern

Alex Colon, Nursing Asst II - Acute Care

Nicole Costello, PSNE- Professional Student Nurse Extern

Johnique Coston, Medical Assistant Phys Prac

Angelica Cotto, PSNE- Professional Student Nurse Extern

Alexa Cruz, Material Management Tech

Melissa Cuadrado, Human Svc Aide

Rachelle Cuff, Registered Nurse Home Health

Nicole Cuvo, Patient Services Rep

Anna Darling, PSNE- Professional Student Nurse Extern

Elsa Davis, Admin Partner

Vivian Decena, Patient Services Rep

Damaris Del Pozo, Guest Services Representative

Lyndsey DelliSanti, PSNE- Professional Student Nurse Extern

Maria DeMatto, Diag Technologist

Noah DeMatto, Technical Partner

Kaitlin DeMent, PSNE- Professional Student Nurse Extern

Danielle Diaz, Reg Spec

Christina Donofrio, BH Aide

Amy Downer, Phlebotomist

Suzette Dupee-MCkittrick , Dietary Aide

Amr Elmeki, MD

Allison Enke, PSNE- Professional Student Nurse Extern

Princess Enriquez, PSNE- Professional Student Nurse Extern

Ronald Evans Jr, Technical Partner

Ashleigh Falcione, PSNE- Professional Student Nurse Extern

Branden Fanelli, PSNE- Professional Student Nurse Extern

Katherine Fazzari, Pt Observation Asst

Cassidy Fernandez, PSNE- Professional Student Nurse Extern

Angela Fezza, PSNE- Professional Student Nurse Extern

Hannah Folk, PSNE- Professional Student Nurse Extern

Dale Fredericks, Phlebotomist

Jeffrey Freer, Cafeteria Worker

Jennifer Fuente, Behavioral Health Referral Spec - CL

Riley Gaita, PSNE- Professional Student Nurse Extern

Sharon Gallo, Nurse Instructor

Jenny Garcia, Admin Partner

Rebecca Garzon, Nurse Extern I

Olivia Geiger, Occupational Therapist

Joseph Gengarely, PSNE- Professional Student Nurse Extern

Ben Glivens, Admin Partner

Gabrielle Gonzalez, Crisis Intervention Spec

Lauren Goodwin, CRC Consultant

Courtney Gordon, Nursing Assistant

Shelby Gray, Scheduling Coord

Amanda Greer, Pt Observation Asst

Rachel Gregori, Reg Spec

Abigail Groff, PSNE- Professional Student Nurse Extern

Kayle Grohotolski, Prof Student Nurse Pt Obs Asst

Mark Grossman, Medical Assistant

Jennifer Guarino, Technical Partner

Elizabeth Gulick , Patient Services Rep

Roohi Gupta, Radiation Physicist II

Lauren Guter, Care Continuum Partner

Cassandra Hale, Receptionist - Executive Suite

Anastasia Hall, Case Mgr Psych PDM

Aszhadia Harris, Periop Tech Asst Wknd

Cole Herbst, Sr Clin Business Intel Analyst

Linabeth Hernandez, Nursing Assistant

Irisneyda Herrera Duran , Pre Engagement Spec

Haley Hertzog, PSNE- Professional Student Nurse Extern

Megan Heyer, PSNE- Professional Student Nurse Extern

Nicole Heyer, Pt Observation Asst

Michael Howell, Prof Student Nurse Pt Obs Asst

Jamie Hutta, LPN

Emily Jacobs, Colleague Rewards - Compensation Analyst

Christelle Joseph, PSNE- Professional Student Nurse Extern

Charissa Karcher, Patient Transporter PDM

Neha Kaushik, MD

Deanna Kistler Rozsitch, Medical Assistant Phys Prac

Kim Kneller, Patient Services Rep

Myung Ko, LPN

Christe Konopitski, Annual Giving Officer

Sean Kujas, Pharmacy Intern

Kayla Kulp, PSNE- Professional Student Nurse Extern

Rosa Kurtz, Tech Partner WKND Day

Dakota Kyzer, Speech/LangPathologist

Melissa Labombarda, Housekeeper

Anna Lacalamita, PA

Peter Lantin, PSNE- Professional Student Nurse Extern

Brooke Latchum, PSNE- Professional Student Nurse Extern

Brittany Lawrence, Technical Partner

Marie Leone, Medical Assistant Phys Prac

Griffin Libby, Nursing Assistant

Yolanda Lisbey, Housekeeper

Sheena Maher, Patient Services Rep

Michael Mandarano, DO

Corrine Marchese, Physical Therapy Asst

Andrea Marcolla, Behavioral Health Spec

Erica Martemucci, Admin Partner

Jenifer Martin Gilio, Dir Development, Major Gifts

Jessica Martinez, RN PDM II Evng/Night

Rebecca Matz, PSNE- Professional Student Nurse Extern

Dewayne May, MHT NA

Destiny McGee, Medical Assistant Phys Prac

Brianna McGowan, PSNE- Professional Student Nurse Extern

Bo Miller, Patient Transporter

Heather Miller, Phlebotomist

Jamie Miller, Nurse Instructor

Jacqueline Mohn, Patient Obs Assistant

Michael Monti, Application Dev and Supp Expert

Rachel Moser, PSNE- Professional Student Nurse Extern

Amber Motley, PSNE- Professional Student Nurse Extern

Demi Muhlig, PSNE- Professional Student Nurse Extern

Jeanine Nagy, Prog Coord MS

Kyle Namm, Technical Partner

Stephanie Neamah, Technical Partner

Mia Negron, PSNE- Professional Student Nurse Extern

Jackie Ni, PSNE- Professional Student Nurse Extern

Bridgette Normando, Technical Partner

Aleksandr Onofrey, PSNE- Professional Student Nurse Extern

Ashley Oquendo Melendez, Clerk Typist

Kristi Ortiz, Prof Student Nurse Pt Obs Asst

Dipesh Patel, MD

Theresa Patrick, LPN

Karla Perallon, PSNE- Professional Student Nurse Extern

Angelica Perez, Pharmacy Tech

Tatianna Perez, Prof Student Nurse Pt Obs Asst

Fridlene Pluviose, Nursing Asst II - Acute Care

Nicholas Poplarchick, Physical Therapy Asst

Campbell Power, PSNE- Professional Student Nurse Extern

Elizabeth Pulice, PSNE- Professional Student Nurse Extern

Lauren Reineke, Prof Student Nurse Pt Obs Asst

Marjorie Reiter, Practice Director

Jennifer Ring, BH Aide

Amber Rivera, Technical Partner

Kaila Rivera, Reg Spec

Barbara Rocker, Front Desk Specialist

Karesa Rodney, Registered Nurse

Leisa Rodrigues, Phlebotomist

Jose Rotger, Technical Partner

Brian Roth, Patient Transporter

Chynnalyn Rothenberger, PSNE- Professional Student Nurse Extern

Alexis Ryan, PSNE- Professional Student Nurse Extern

Kaylah Saintil, Medical Assistant

Emily Sakevich, Medical Assistant Phys Prac

Danielle Salerno, Front Desk Specialist

Kharla Sanchez Cuesta, BH Aide

Yaribel Santana Perez, Medical Assistant Phys Prac

Oxana Savkanitch, Reg Spec

Rhianna Scholl, PSNE- Professional Student Nurse Extern

Julia Sedor, Addiction Counselor

Amelia Shelton, Sr Application Dev and Supp Analyst

Laura Sitch, Mgr Radiation Therapy

Joshua Skibiel, Phlebotomist

Belinda Smith, Technical Partner

Brooke Smith, Patient Services Rep

Vanessa Snyder, Phlebotomist

Madisen Straub, Prof Student Nurse Pt Obs Asst

Lizabeth Strehl, Reg Spec

Jonathan Surak, Reg Cardiovas Inv Spec

Bridgeen Tohill, RN WKND Day

Kevin Trinchere, Certified Registered Nurse Anesthetist

Sharon Turton, BH Aide

Victoria Vargas, PSNE- Professional Student Nurse Extern

Sharon Vuppula, MD

Venus White, Inpatient LPN WKND Day

Danielle Williamson, PSNE- Professional Student Nurse Extern

Kalsang Yangla, Technical Partner



Welcome Laura Kohler, MHA, BSN, RN

She joins LVHN as Administrator of Integrated Care Coordination.

Kay Werhun

Monday, January 3, 2022

Please welcome Laura Kohler back to Lehigh Valley Health Network (LVHN). Today, Laura joins our team as the Administrator of Integrated Care Coordination, Inpatient Care Management. Laura began her career at LVHN as a cardiac nurse and advanced her care management career over the last 20 years to include the leadership of inpatient care management teams and Bundled Payments for Care Improvement (BPCI) programmatic oversight.

Laura's most recent position was the Vice President of Clinical Excellence for Presbyterian Senior Living (PSL). In that role she was responsible for oversight, expertise and leadership to ensure the delivery of quality healthcare services to PSL's resident population, which includes skilled nursing, assisted living, personal care, home and community based programs. In her new role, Laura will have strategic oversight of operations for Inpatient Care Management across the LVHN enterprise.



Watch LVHN Center for Healthcare Education Virtual Topping Off Ceremony

View the virtual event on Tuesday, Jan. 11, at 11 a.m. on LVHN's Facebook page.

LVHN Insider

Thursday, January 6, 2022

All LVHN colleagues are invited to join the Facebook Premiere event for the ceremonial topping off of the LVHN Center for Healthcare Education on Tuesday, Jan. 11 at 11 a.m. This new facility at 3900 Sierra Circle in Center Valley will become the home of LVHN's Department of Education and serve as the central hub of education and training programs for our network.

The event will feature remarks from Michael Rossi, MD, MBA, Executive Vice President and Chief Clinical Officer of LVHN, and Robert Barraco, MD, MPH, Chief Academic Officer of LVHN.

You can watch the event premiere on [LVHN's Facebook page](#).

Join the virtual event to celebrate the new LVHN Center for Healthcare Education, see the first public facility renderings and hear about the future of education at LVHN.



Project ECHO: What is that?!? An Antibigram

Attend a presentation on Jan. 21 at noon.

LVHN Insider

Monday, January 3, 2022

LVHN is proud to be part of Project ECHO, an innovative telehealth program designed to connect health care specialists with providers located at distant sites. Project ECHO aims to help eliminate health care inequities through the use of telehealth technology.

Join us for **What is that?!? An Antibigram...** presented by Jarrod Kile, RPh.

When: Friday, Jan. 21 at noon

Target audience: Physicians, APCs, clinical pharmacists, nurses and infection control practitioners

Register using this link: <https://redcap.lvh.com/redcap/surveys/?s=MHFKFYNYPX>

At the end of this presentation, you should be able to:

1. Discuss what an antibiogram is and what it is used for
2. Describe how an antibiogram is designed
3. Recommend how a nursing facility can utilize their antibiogram to help antimicrobial stewardship

Participants are encouraged to submit questions in advance regarding antibiograms by emailing Carolyn Suess at carolyn.suess@lvhn.org. All patient information submitted should be de-identified for HIPAA compliance.

NEWS ANNOUNCEMENT

Lehigh Valley Health Network Announces Plan to Form One Ambulance Company With Existing EMS Services

By Jessica Blasco

January 3, 2022



East Stroudsburg, Pa. (January 3, 2022) – Lehigh Valley Health Network (LVHN) has announced plans to form a singular Emergency Medical Service (EMS) organization called Lehigh Valley Health Network–Emergency Medical Services (LVHN–EMS), as of January 1, 2022. LVHN–EMS will be comprised of West End Community Ambulance Association (WECAA) in Effort, Pa., the former American Patient Transport System (APTS) in Hazleton, Pa., and LVHN–MedEvac in Lehigh County.

While the community may see a new look of vehicles and branding, all three entities will retain the same staff and continue to provide the same services from the same locations throughout Luzerne, Monroe and Lehigh Counties and surrounding communities. This includes the many resources they provide to the community such as CPR training and standby services for special events.

“This will be a smooth transition, as all three entities have always prided themselves on providing the highest quality care to our patients, and that will remain our priority,” says Bob Begliomini, Senior Vice President, LVHN.

According to Bob Begliomini, Senior Vice President, LVHN, this transition is in the best interest of everyone involved, as it will allow us to expand the services and resources for both the employees of each location and the communities they serve. “Under LVHN–EMS, we plan to bolster our facilities’ existing capabilities while still allowing them to maintain the hometown feel they have always had,” says Begliomini.

The mission of LVHN–EMS is to provide cutting edge medical care to everyone they serve. “This will be a smooth transition, as all three entities have always prided themselves on providing the highest quality care to our patients, and that will remain our priority,” says Begliomini.

PATIENT STORY

Perkasie Newlywed Survives ‘Widow-Maker’ Heart Attack

After collapsing at home, Bucks County welder survived due to leading-edge medical care

By **Joe Nixon**



A totally blocked artery stopped David Byrne’s heart and nearly took his life on April 22, 2021.

Those around him – from his wife, to local police and emergency medical responders, to Grand View Hospital and Lehigh Valley Health Network (LVHN) doctors and cardiac intensive care – had other ideas. On their watch, they would do everything possible to save him.

[Frightening morning](#)



The 38-year-old welder felt terrible when he woke up. He had bad indigestion and chest discomfort but chalked it up to eating spicy chicken wings the night before. Still, at 5:30 a.m., he left his home in Perkasio, Bucks County, for a roughly 45-minute drive to his job for rail freight transportation company CSX in Langhorne. Shortly after arriving, he went home, too sick to work.

He decided to take a shower. Moments later, he crashed to the shower floor where his wife of just four months, Jillian, found him, unconscious. His heart had stopped.

She dialed 911.

The dispatcher calmly instructed her to begin CPR.

“In the moment, I didn’t think about anything else but getting him to breathe,” says Jillian.

Perkasie police officer Ray Fox and Hilltown Township officer Jim Browne were first on the scene. They got Dave out of the shower and took over CPR duties. He was still in cardiac arrest. They used an automatic defibrillator to try to get Dave’s heart going by delivering multiple electrical shocks to his chest. MEDIC 151 responded moments later and paramedic Scott Huttenlock and EMT Daniel Schwartz defibrillated Dave several more times during the 3 ½ mile ride to Grand View Hospital in Sellersville.

“In the setting of out-of-hospital cardiac arrest the odds are often stacked against us, however we were very fortunate to get a great outcome with lots of prayers and help from above.” - Shailendra Singh, MD FACC FSCAI

At the hospital

Grand View Hospital has a partnership with LVHN, started in late 2019, for LVH Cardiology to provide around-the-clock interventional cardiology coverage of Grand View Health’s cardiac catheterization lab. LVHN cardiologists, assisted by nurses and technicians from Grand View perform procedures including stent placements, and vascular procedures.

Interventional cardiologist [Shailendra Singh](#), MD, Co-Director of Interventional Vascular Cardiology at Lehigh Valley Heart and Vascular Institute, was on duty at Grand View Hospital that day.

Once at the hospital, Dave's heart had regained rhythm, but his breathing was labored, and his oxygen level was very low which required immediate intubation with mechanical ventilation. An electrocardiogram (ECG) confirmed Dave's heart attack and tests showed his left anterior descending artery was totally blocked, which caused his cardiac arrest. A cardiac arrest caused by a heart attack involving this blood vessel is commonly referred to as a 'widow maker' because of the high mortality rate, especially in cardiac arrest that occurs outside the hospital.

"Dave's heart function decreased dramatically to 10 percent of what it should have been. Therefore, it was imperative to immediately fix the blockage while assessing if further therapies were necessary, such as a heart pump (officially called a left ventricular assist device), to allow the heart to recover while providing good blood flow to his organs and the rest of the body," says Singh.

Singh immediately took Dave to the cardiac catheterization laboratory at Grand View and within 15 minutes was fixing the left anterior descending artery blockage which also involved another branch called the diagonal artery. Due to severe cardiac shock, Dave received a heart pump.

Dave was then transferred to the cardiac intensive care unit at Lehigh Valley Hospital–Cedar Crest, accompanied by Joanne Engle, a Grand View Cardiac Catheterization nurse along with paramedic Anthony Damiani and EMT Daniel Schwartz, where he remained for two months. The resources of [Lehigh Valley Heart and Vascular Institute](#) were instrumental in Dave's recovery.

He underwent targeted temperature management (formerly therapeutic hypothermia) to ensure brain function recovery. Aside from his heart attack, he also recovered from liver and kidney damage, infections, being on dialysis for much of his time in intensive care, and even a procedure to remove blood from his lungs.

"The remarkable part is the resilience of the human body. In an out-of-hospital cardiac arrest the odds are often stacked against us, but we were very fortunate to get a great outcome with lots of prayers and help from above," says Singh.

Did You Know?

About 10 percent of people who experience an out-of-hospital cardiac arrest survive.

[Directly from Dave](#)



Dave doesn't recall the day of his heart attack. Since he was sedated for much of his time in intensive care at LVH–Cedar Crest, Dave says he remembers just the last few weeks there. The former Marine later spent time in an acute long-term rehabilitation facility in southeastern Pennsylvania, before going home for good on Aug. 6.

He says it's hard to define his experience in the ICU since he has little memory of it. Jillian filled him in on what he endured and the care he received. "Hearing that, there was a lot going against me," he says. "It was one step forward and a step or two backwards. It's sad knowing my wife and family had to see me go through this."

He lost about 75 pounds through it all and says he's maintained that healthier weight and improved his diet, which he confessed wasn't the best before his heart attack.

And from Jillian

"It was very, very tough for me and our family," says Jillian. "The first couple weeks were very touch and go. I spent every waking hour I could at his side."

The couple praised their caregivers.

"Everyone was great," says Jillian, who added she formed great relationships with all the LVH–Cedar Crest nurses who cared for her husband. "I asked a million questions. I wanted to be part of his recovery and I could tell they were so invested in his recovery, which was great. It was comforting for Dave and me and for our family."

Jillian recalled meeting Singh at Grand View Hospital's waiting room immediately after he fixed Dave's blocked artery and installed the heart pump. "You could sense the pride he felt in his work," she says in a social media post chronicling Dave's medical odyssey. "He was smiling through his mask and seemed optimistic for Dave's recovery."

In a card to caregivers at LVH–Cedar Crest, Jillian said she and Dave were "incredibly thankful and fortunate" to have Singh as Dave's interventional cardiologist. "It is palpable that Dr. Singh strives to achieve the very best outcomes for his patients and that he is very thorough and talented at his craft," she writes.

More than coincidence

The Byrnes believe there was more than coincidence at work on April 22. “No luck was involved. This was something a little more than that,” says Dave.

- Jillian worked from home, so she was there when Dave collapsed.
- Dave drove to and from work that morning, but he didn’t go into cardiac arrest behind the wheel.
- Grand View Hospital, equipped with a new cardiac catheterization lab and team of nurses and technicians provided life-saving care close to home. There, Singh who is specially trained in high-risk procedures, placed the small heart pump to maintain blood flow and sustain Dave’s life.

Jillian’s quick action and CPR when Dave collapsed helped save his life, but she doesn’t consider herself a hero. “I don’t think of myself that way because he’s my husband and I did what I had to do,” she says. On her social media account, she wrote, “My husband is a living miracle and inspirationally strong. I’m so proud to be his wife.”

Singh says celebrating victories like Dave’s recovery is important because it takes a team to be successful in saving someone’s life in this scenario.

“The fact that Dave is walking, talking and completely normal without any neurological consequences, is incredible,” says Singh. “Jillian has been a gem and literally one of the best caretakers I have ever seen.”

What’s next



Dave says his and Jillian’s focus is “trying to go back to living our lives, full productive lives,” and maybe starting a family.

Welding may be out as a profession when he goes back to work, but he says he’ll adjust and figure things out. “Thankfully, I’m around to make those decisions,” he says.

"We can't thank everyone enough," says Jillian. "We're very appreciative of every person who had a hand in his recovery."



Heart Attacks: Next Generation Testing at LVHN Helps Rule Them In or Out Sooner

High-sensitivity troponin is a telltale sign of heart injury.

LVHN Insider

Tuesday, January 4, 2022

Lehigh Valley Health Network (LVHN) emergency room physicians and cardiologists are using a new test to help them know much more quickly if you've had a heart attack not identified by your electrocardiogram (ECG).

Diagnosis time can be cut by hours, potentially shortening time to appropriate treatment. For those whose symptoms are not due to a heart attack, the new test rapidly identifies individuals who can safely be sent home.

Telltale protein

A heart attack damages heart muscle, releasing a type of protein called troponin (**trow-puh-nuhn**). Troponin is ordinarily present in your blood in extremely low levels. If you are having a heart attack, troponin levels will rapidly rise in your blood and be detected by the new high-sensitivity testing.

The new blood test, in place at all LVHN hospitals, allows doctors to see changes in troponin levels at much lower quantities than with previous testing equipment and much earlier. Rising or falling troponin levels can signal a heart attack from a blocked artery or heart damage due to other causes.

"This test helps the emergency physician achieve greater accuracy in safely discharging patients and appropriate hospitalization of our chest pain patients," says [Richard MacKenzie](#), MD, LVPD Emergency Medicine and Senior Vice Chair, Emergency and Hospital Medicine, LVHN.

Rapid detection now available

Prior to high-sensitivity testing, a patient had a series of blood tests over three to six hours before doctors could confirm significant changes in troponin levels and evidence of heart injury. Now, with high-sensitivity testing, doctors can detect heart injury in just two to three hours after symptoms begin.

“Because (high-sensitivity testing) detects changes in troponin levels very quickly, we’re able to identify a patient with a high risk, as well as someone who has a low risk for a heart attack,” says cardiologist [Bruce Feldman](#), DO, with LVH Cardiology–1250 Cedar Crest, Lehigh Valley Heart and Vascular Institute. “This is a significant benefit for patients and health care networks.”

Troponin gender differences

Troponin levels differ by gender, with women having lower levels than men.

“When it comes to heart disease, women are different from men in terms of presentation, symptoms, outcomes and treatment strategies,” says cardiologist [Amy Ahnert](#), MD, Director, Women’s Heart and Vascular Program, Lehigh Valley Heart and Vascular Institute. “Here at LVHN, we recognize that there are gender differences when it comes to the diagnosis and treatment of heart disease and this new test will help us in our mission to improve outcomes in women.”
