

Developing a Workflow for the Integration of Patient Education Materials into EPIC

Muhammad-Sharif Moustafa
Muhlenberg College

Follow this and additional works at: <https://scholarlyworks.lvhn.org/research-scholars-posters>

Let us know how access to this document benefits you

Published In/Presented At

Moustafa, M., (2015, July 31) *Developing a Workflow for the Integration of Patient Education Materials into EPIC*. Poster presented at LVHN Research Scholar Program Poster Session, Lehigh Valley Health Network, Allentown, PA.

This Poster is brought to you for free and open access by LVHN Scholarly Works. It has been accepted for inclusion in LVHN Scholarly Works by an authorized administrator. For more information, please contact LibraryServices@lvhn.org.

Developing a Workflow for the Integration of Patient Education Materials in EPIC

Muhammad-Sharif Moustafa
Mentor: Kristine Petre

Lehigh Valley Health Network, Allentown, Pennsylvania

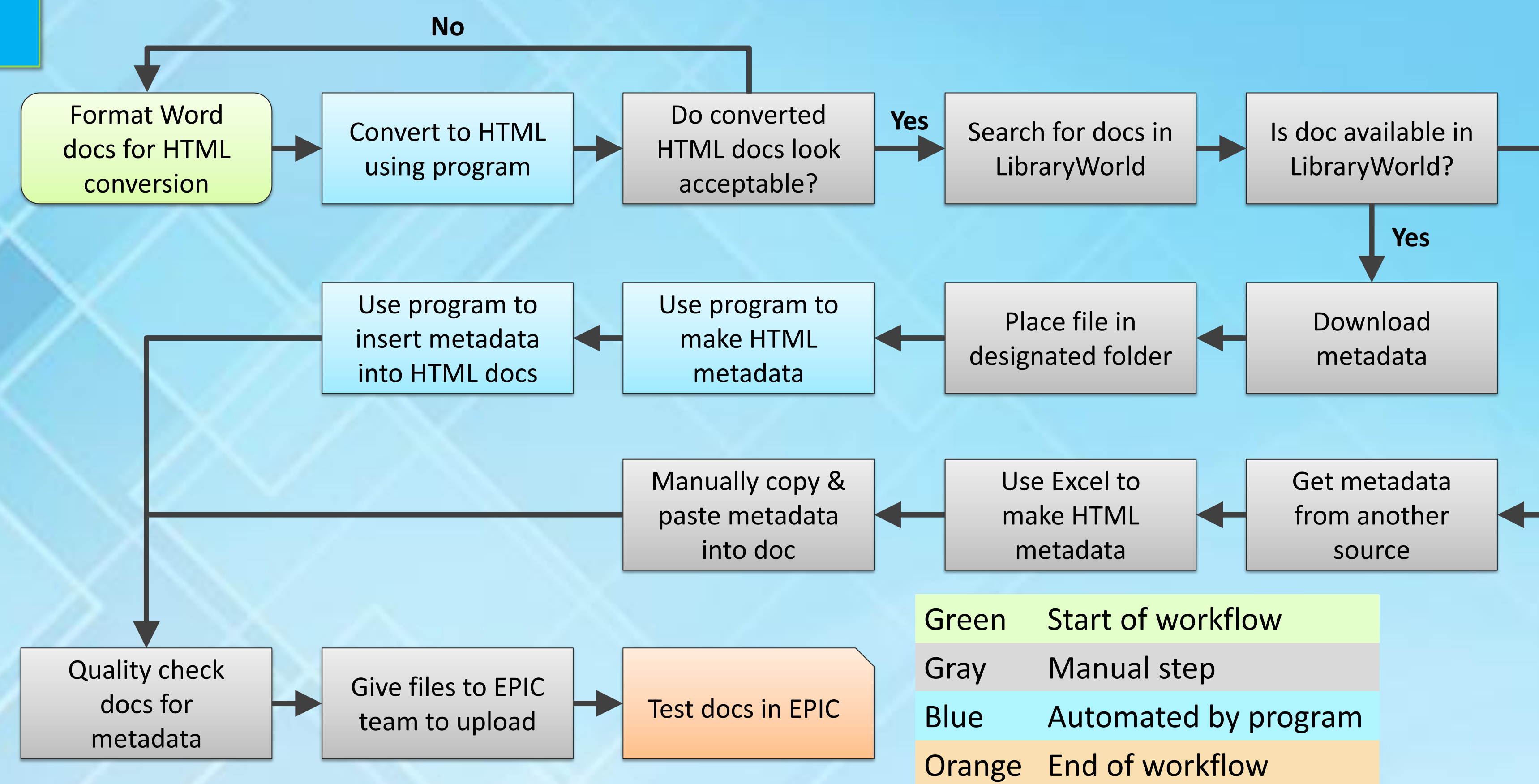
Current State

- Effective patient education can improve the health of patients by reducing anxiety and improving compliance, which in turn reduces the cost of care at hospitals.
- Currently, LVHN custom patient education materials are not integrated into EPIC, which would force health professionals to manually document that they gave patients education materials.
- Manually documenting patient teaching introduces errors and inefficiency unlike the third party materials (Krames) which can be documented in EPIC.
- Currently, LVHN custom patient education materials cannot be added to EPIC because they are in Microsoft Word and PDF formats.

Requirements

Requirement	Action
Integrate LVHN patient education materials into EPIC	Convert the 1500+ documents to HTML
Display LVHN patient education documents in the "Relevant Documents" section in EPIC	Insert a specific set of required metadata into the HTML documents
Display LVHN patient education documents at the top of the list of the "Relevant Documents" section.	Automate adding an asterisk to the beginning of the title of each document's metadata during the insertion action above

Workflow that patient education staff follow to integrate documents into EPIC



Conversion module that converts Microsoft Word documents to HTML

Convert Word Documents to HTML

Step 0: Preparation

Ensure the following actions have been taken before using this program. The checkboxes beside each action are for your convenience.

- Read the conversion process sheet.
- Closed all documents that you will be converting.
- Ensured that you have write access to all of the documents (meaning no other users are editing the files you will be converting). This can be achieved by copying any shared folders to a private folder.
- Put only documents that can be opened by Microsoft Word into the conversion folder. These include Word, HTML, TXT, and RTF documents. Please do not have PDF documents or images in the folder.

Conversion Module

Step 1: Select Input Folder

Type, paste in, or select, by using the "Browse" button, the path of the folder that contains Word documents that you want to convert to HTML.
Example: X:\Library\worddocs

Input Folder Path:

Step 2: Select Output Folder

Type, paste in, or select, by using the "Browse" button, the path of the folder that you want the HTML documents saved in.
Example: X:\Library\htmldocs

Output Folder Path:

Step 3: Convert

Click Convert to convert the Word documents to HTML. The HTML documents will be saved in the a subfolder of the folder you specified called "ConvertedXHTMLDocs". A copy of this folder with the same name is also saved to your Desktop.

Step 4: View

Either browse to the ConvertedXHTMLDocs folder or click the button on the left to view the converted HTML documents.

Results and Conclusion

- Requirements were gathered based on current documents, technology in EPIC, and workflows from the University of Michigan and University of Virginia.
- A semi-automated workflow that performed required actions was created with detailed documentation.
- A computer program with an effective graphic user interface was created to perform most steps of the workflow and guide users through the workflow.
- Patient Education tested the workflow and provided feedback.
- Modifications were made to the workflow and patient education staff retested.
- Several documents have been converted, uploaded, and tested in EPIC using the workflow and the program.
- The computer program was thoroughly documented so that it can be maintained by future staff members.

Next Steps

- Have patient education staff convert a set of patient education materials related to one disease for EPIC launch.
- Upload to EPIC and test in real situations in which health professionals give patients teaching materials through EPIC.
- Convert and upload remaining patient education materials.
- Evaluate InDesign stylesheets.

© 2014 Lehigh Valley Health Network

References: Dreeben, O. (2010). *Patient Education in Rehabilitation*. Sudbury, Massachusetts: Jones and Bartlett Publishers.