

Pilot Study on Interval Colon Cancer: Missed Colon Cancer or Fast Growth from a Serrated Polyp?

Alexa Deemer
Lafayette College

Shereen M F Gheith M.D., PhD.
Lehigh Valley Health Network, shereen_m.gheith@lvhn.org

Jillian Grau MD
Lehigh Valley Health Network, jillian_r.grau@lvhn.org

Elizabeth Dale MS
Lehigh Valley Health Network

Nancy Holihan MB
Lehigh Valley Health Network, nancy_t.holihan@lvh.com

See next page for additional authors

Follow this and additional works at: <https://scholarlyworks.lvhn.org/research-scholars-posters>

Let us know how access to this document benefits you

Published In/Presented At

Deemer, A., Gheith, S., Grau, J., Dale, E., Holihan, N., Jeff Wisotzkey, J., Bub, D. (2016, July 29) *Pilot Study on Interval Colon Cancer: Missed Colon Cancer or Fast Growth from a Serrated Polyp?* Poster presented at LVHN Research Scholar Program Poster Session, Lehigh Valley Health Network, Allentown, PA.

This Poster is brought to you for free and open access by LVHN Scholarly Works. It has been accepted for inclusion in LVHN Scholarly Works by an authorized administrator. For more information, please contact LibraryServices@lvhn.org.

Authors

Alexa Deemer; Shereen M F Gheith M.D., PhD.; Jillian Grau MD; Elizabeth Dale MS; Nancy Holihan MB; Jeff Wisotzkey PhD; and David S. Bub MD

Pilot Study on Interval Colon Cancer: Missed colon cancer or fast growth from a sessile serrated polyp?

Alexa Deemer; Shereen Gheith, MD, PhD; Jillian Grau, MD; Elizabeth Dale, MS; Nancy Holihan, MB, CHT; Jeff Wisotzkey, PhD, HCLD and David Bub, MD

Health Network Laboratories
Lehigh Valley Health Network, Allentown, Pennsylvania

Introduction

Colorectal cancer is the third most common cancer diagnosed amongst men and women, as well as the second leading cause of cancer-related deaths in the United States¹. Early detection and treatment are associated with a better survival outcome. The American Cancer Society recommends regular screening procedures, such as a colonoscopy, at age of 50 for both men and women².

Three distinct molecular pathways have been described in colorectal cancer³: The APC/Beta-catenin pathway, the microsatellite instability pathway, and the serrated neoplasia pathway (SNP). Sessile serrated polyps (SSP) (Figure 1) represent a precursor lesion in 10% of all colorectal cancers and are often associated with BRAF mutations (over 70% of SSP)³. These lesions occur commonly in the proximal right side of the colon. SSP polyps are flat lesions that can be difficult to visualize on colonoscopy screenings. It is hypothesized that early interval colon cancer after a negative colonoscopy may be a result of missed SSP, which may have a more rapid progression to neoplasia. BRAF positive colorectal carcinomas have been associated with old age and are frequently of a higher grade⁴. Microsatellite instability and CpG (5'-cytosine-phosphodiester bond-guanine-3') island methylation are also associated with the SNP and specifically with the BRAF mutation in colorectal carcinoma⁵.

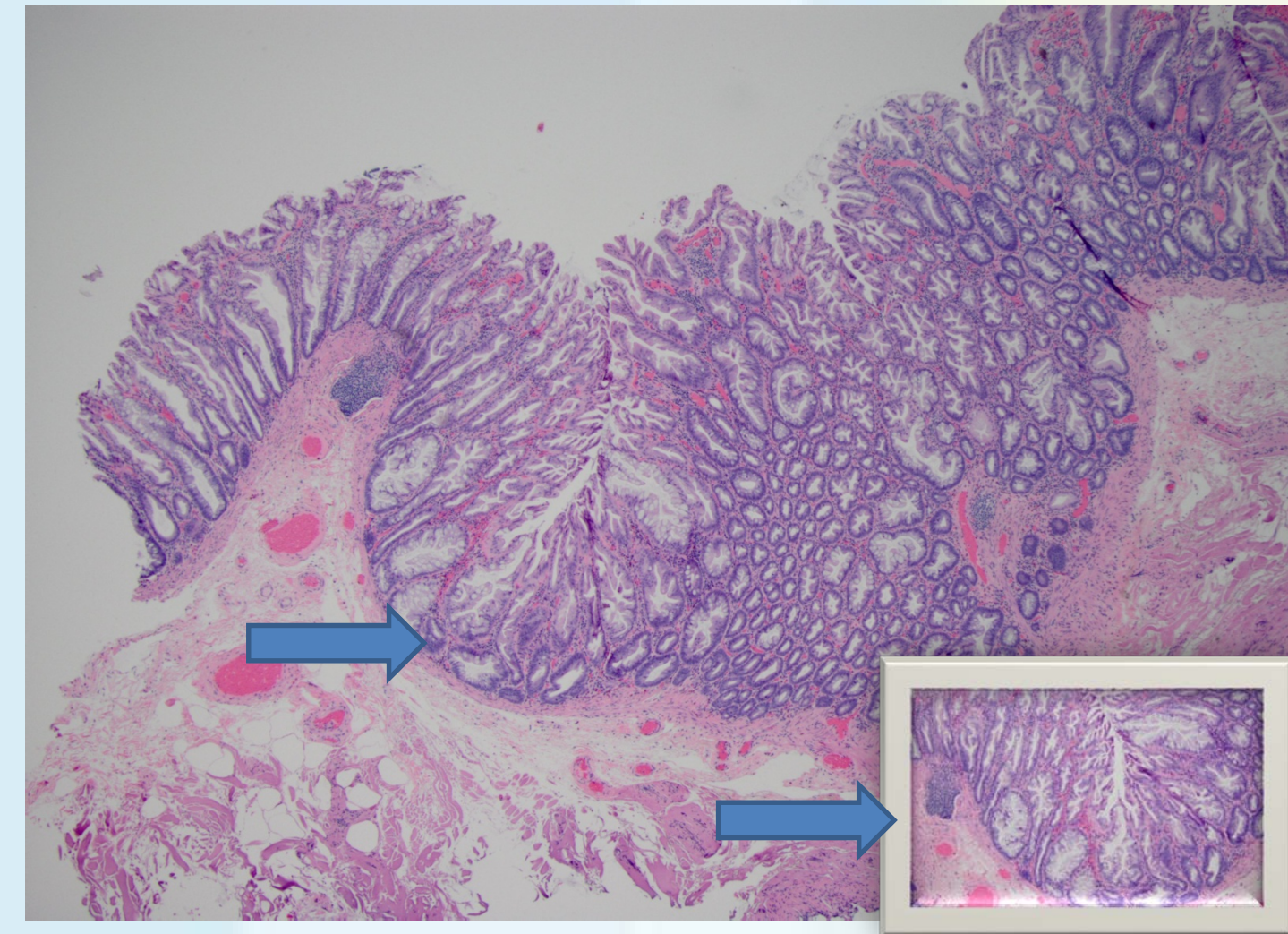


Figure 1. Sessile serrated polyp. Hematoxylin and Eosin stain, original magnification x10. **Insert:** Sessile serrated polyp with saw-tooth branching crypts and flask-like expansion at the base, original magnification x 40.

Design and Aim of the Study

Patient Gender

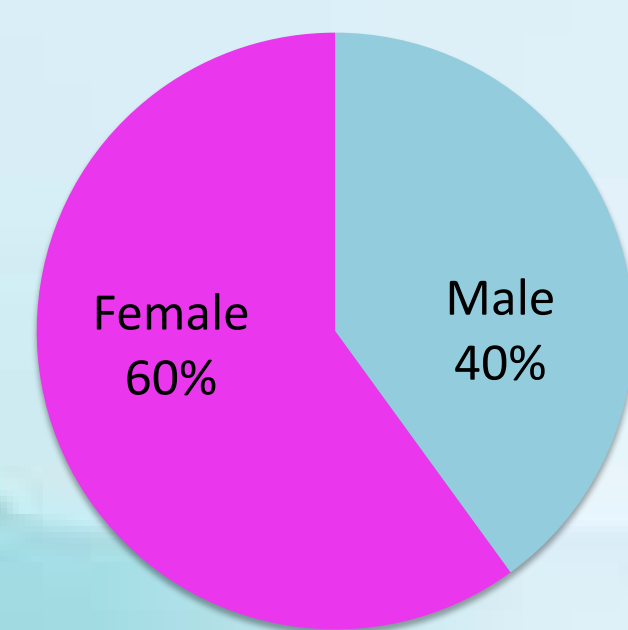


Figure 2a. Patient Gender. Ten males (40%) and fifteen females (60%).

Patient Age

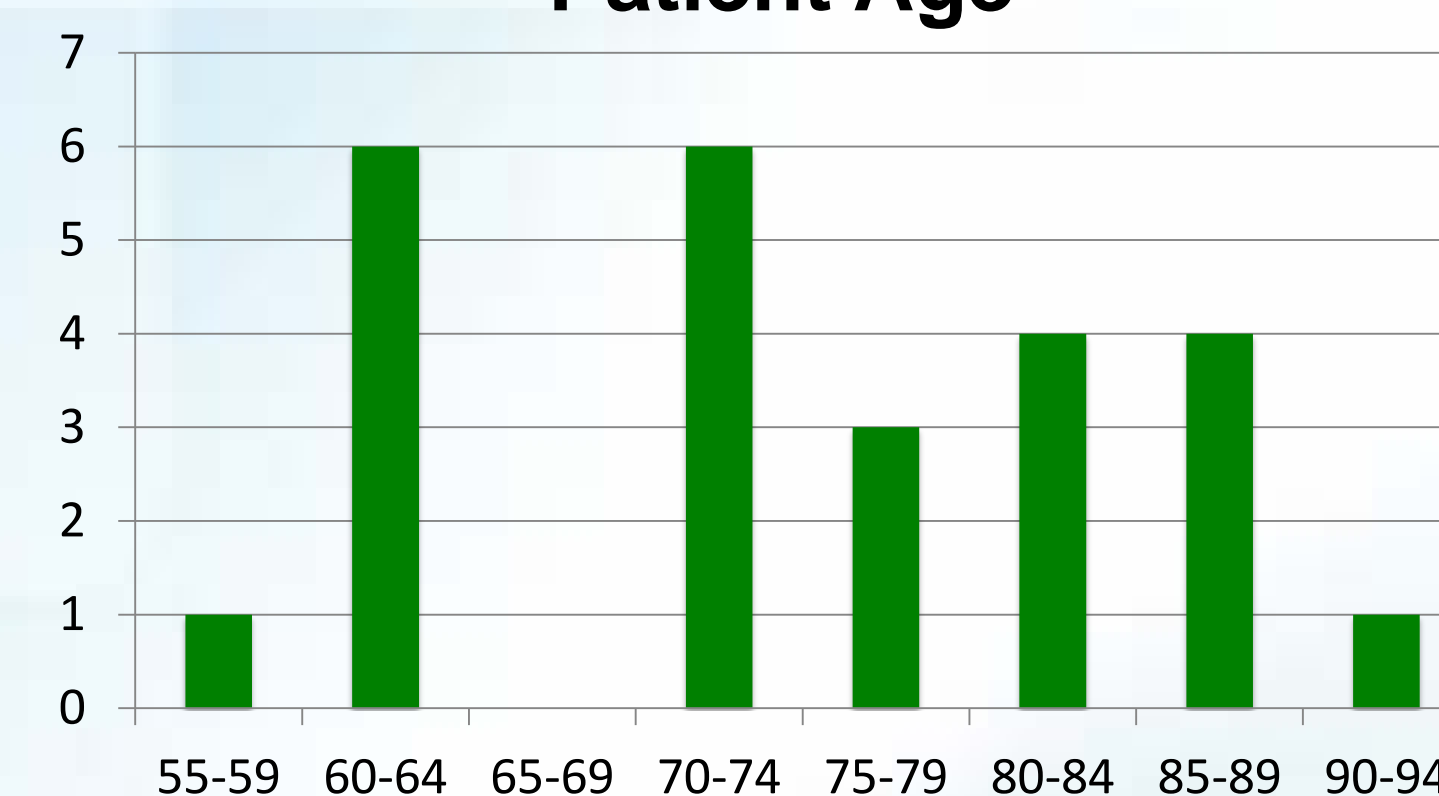


Figure 2b. Patient Age.

The aim of this study is to determine if a BRAF mutation is associated with interval colorectal cancer in patients who have had a negative colonoscopy within the preceding 5 years, and therefore may have been associated with an SSP precursor lesion and/or the SNP pathway. A negative colonoscopy is defined as a colonoscopy without evidence of any malignancy, clinically and microscopically. The interval time of the study is between 7 May 2009 and 21 November 2014. 268 patients were identified with invasive colorectal carcinoma during that time period. Of these, 25 patients (15 females and 10 male) (Figure 2a) fulfilled the inclusion criteria. Patient's age ranges were between 56-94 (Figure 2b).

Materials and Methods

Microscopic localization of tumor

The diagnosis of invasive carcinoma was confirmed by histologic criteria (Figure 3a). The H and E slides were reviewed and areas representing tumor/invasive adenocarcinoma were marked for paraffin block macro-dissection. Paraffin blocks with designated tumors were cut at 5 sections, 10 microns each.

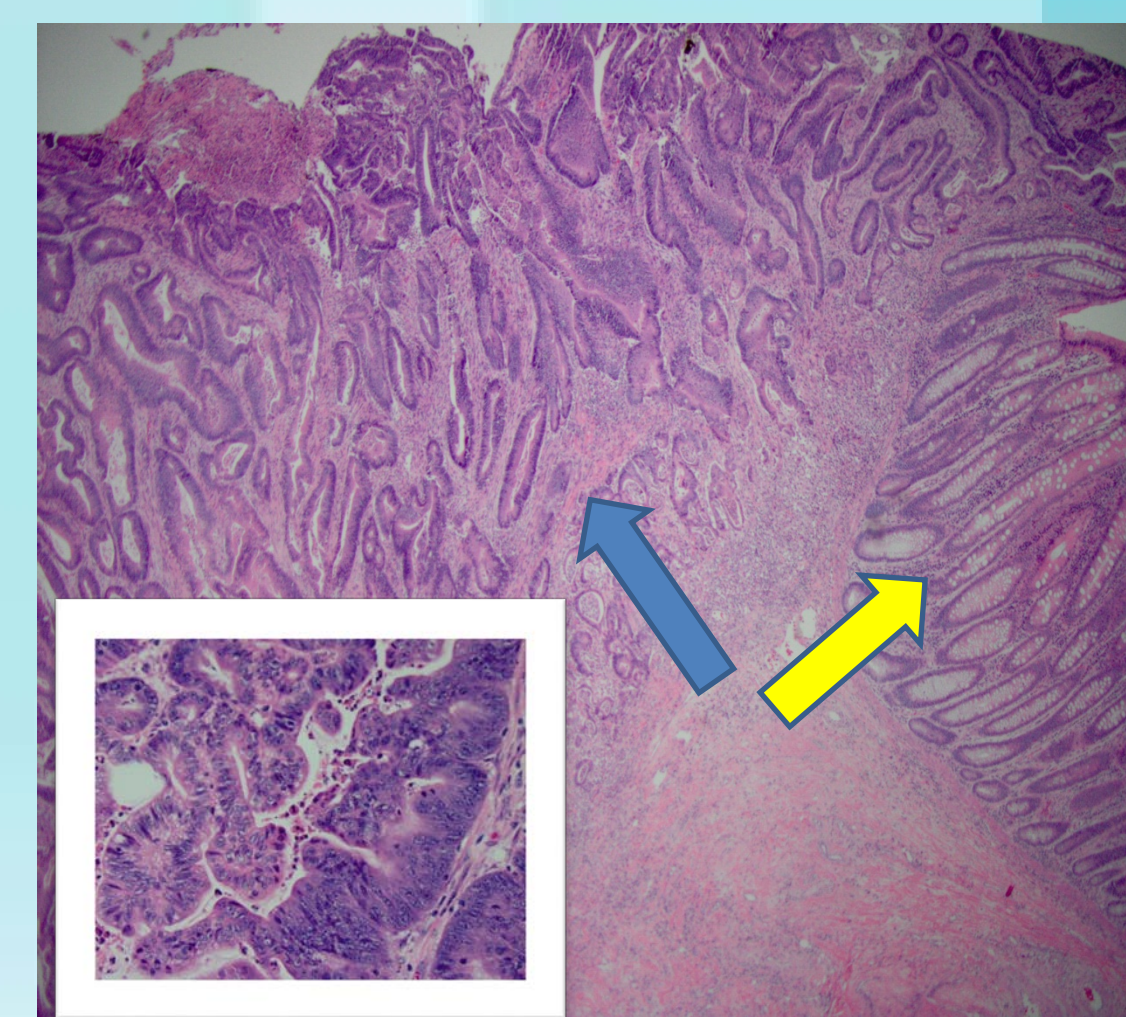


Figure 3a. Normal colonic mucosa (yellow arrow) transitioning to an invasive adenocarcinoma (blue arrow). Hematoxylin and Eosin stain, original magnification x 10. **Insert:** Invasive adenocarcinoma, original magnification x 40.

Tumor Location

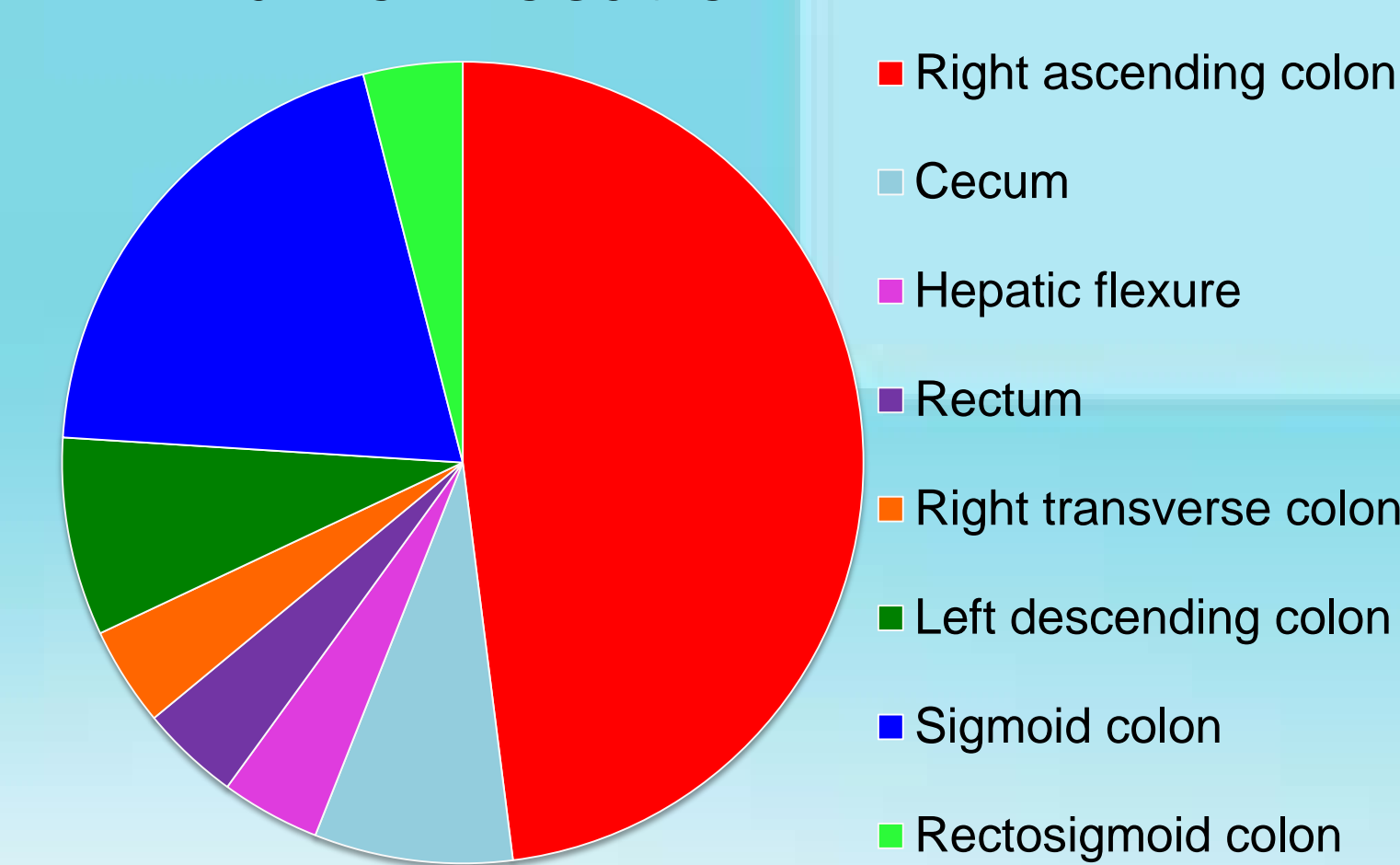


Figure 3b. Tumor Location. Location of the invasive adenocarcinoma within the patients in the study.

DNA extraction:

The cut sections were submitted for DNA extraction (using the Qiagen protocol) and subsequent PCR amplification for BRAF detection.

BRAF detection:

The Entrogen BRAF Mutation Analysis Kit was used. It is intended for the detection of the following BRAF mutations in human genomic DNA at codon 600:

- GTG → GAG (V600E)
- GTG → AAG (V600K)
- GTG → GAT (V600D)

- The BRAF mutation analysis real-time assay is based on mutation-specific PCR. Mutation-specific PCR uses primers that are 100% complementary to mutant variants of the gene. The assay also amplifies an internal control gene in order to ensure that sufficient amount of DNA is available for amplification.
- The detection of the amplification product is done by using fluorescent hydrolysis probes. Each probe contains a fluorophore (FAM™ for the mutant variant of the BRAF gene or VIC® for the internal control gene).
- The probes are complementary to the regions of interest and hybridize to the template DNA. During the amplification process, DNA polymerase cleaves off the fluorophore and the quencher from the probe. Upon separation from the quencher, the fluorescence signal increases dramatically, which is seen by the instrument detectors.
- The PCR detection instrument used in the study is the Roche LightCycler 480.
- Sensitivity of the assay: the assay is able to detect 1% mutation in a background of wild-type DNA.

Results

Ten out of twenty-five (40%) of the patients with invasive colorectal carcinoma had a BRAF V600E mutation (Figure 4a). 80% of these patients were female (Figure 4b), and 90% of the patients were over the age of 70 (Figure 4c). 70% of the tumors with the BRAF mutation were located in the right ascending colon (Figure 4d).

Total Wild Type vs. Mutant

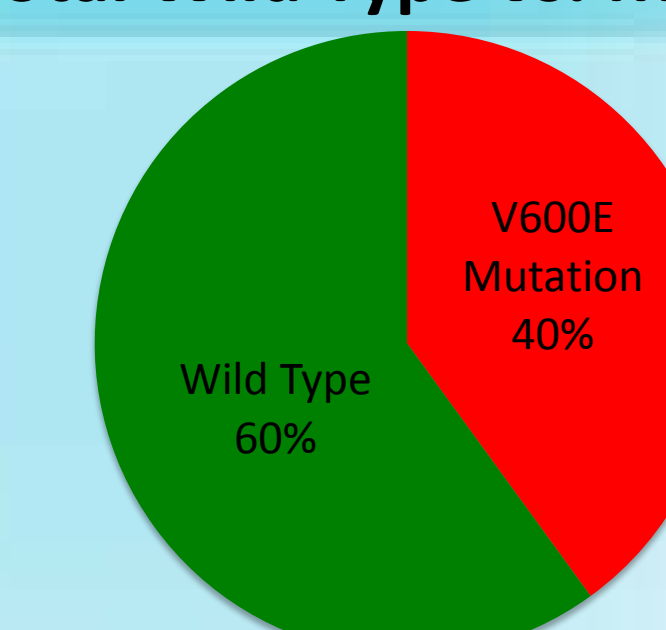


Figure 4a. Total Wild Type vs. Mutant. Percentage of patients with a mutation and without a mutation.

Mutation Gender

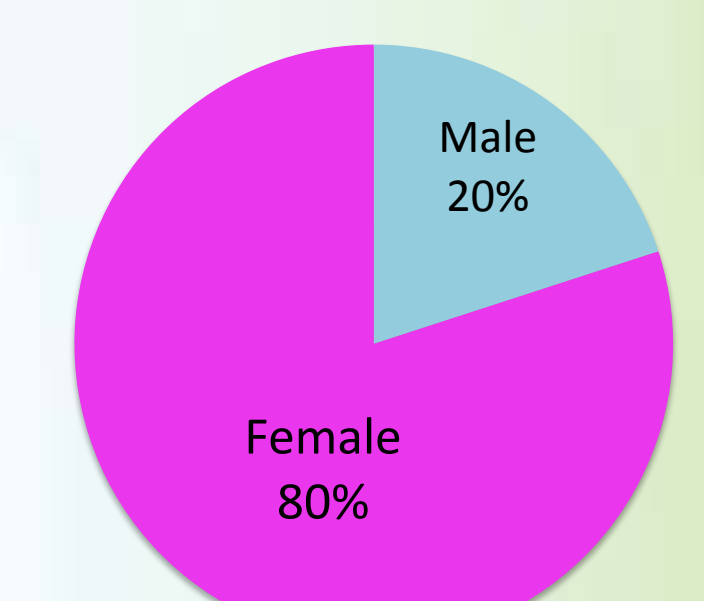


Figure 4b. Mutation Gender. Gender of patients with a BRAF mutation.

Age of Patient with Mutation

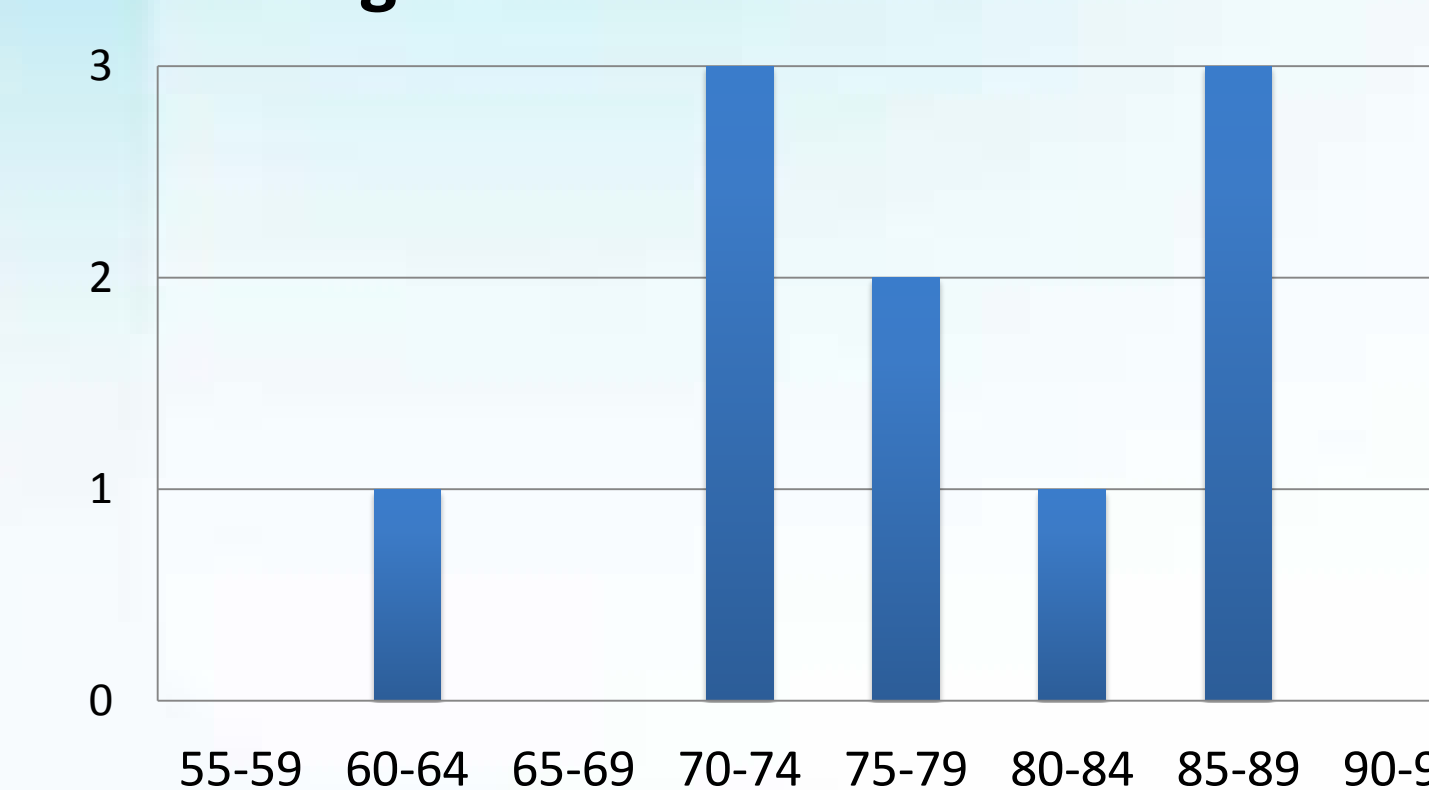


Figure 4c. Age of patients with a BRAF mutation.

Mutation Tumor Location

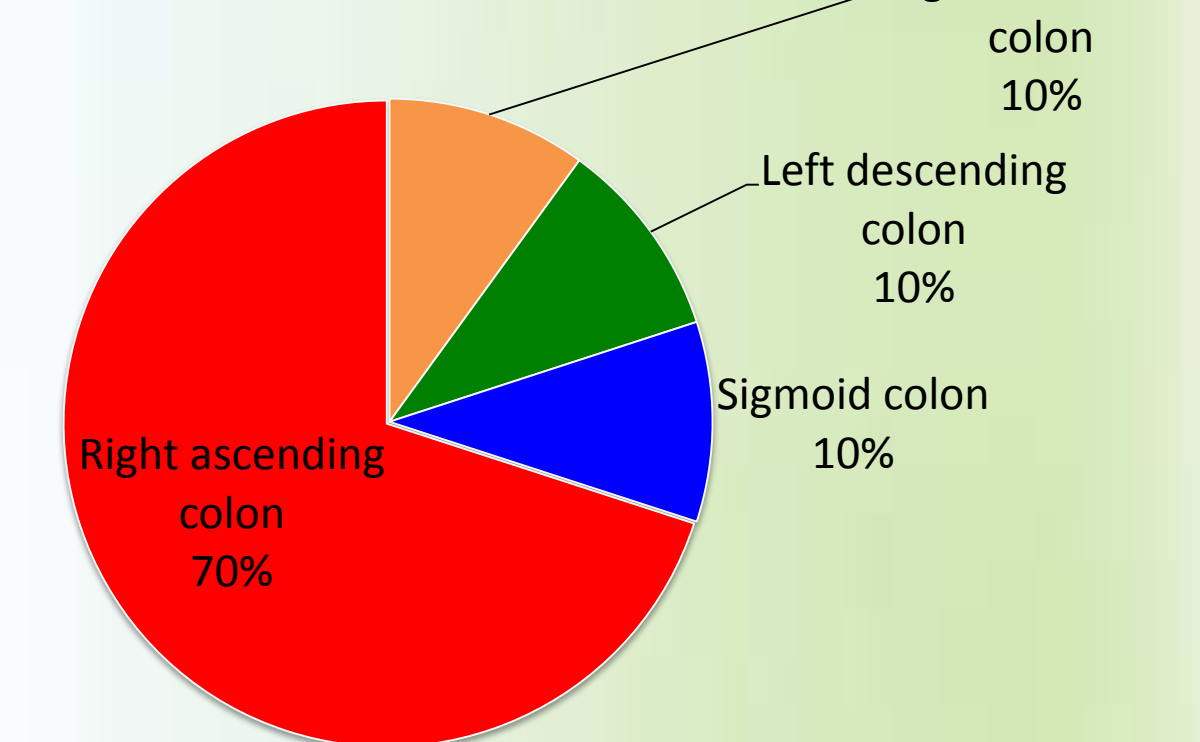


Figure 4d. Mutation tumor location. Location of the invasive adenocarcinoma within patients that have a BRAF mutation.

Conclusion and Future Direction

The data from our institution is in accord with previous publications and demonstrates the propensity of interval colorectal cancer to occur within the right side of the colon⁶. It also highlights the association of these cancers with BRAF mutation, the sessile neoplastic pathway, older age, and female gender⁷. The study also supports the hypothesis that interval colorectal carcinoma following a negative colonoscopy might indicate a missed SSP as the precursor lesion in the right side of the colon in a significant subset of the cases. Future direction is aimed at improving the screening process for colorectal carcinoma. Additional testing includes the possibility of serologic screening and better preparation/visualization of the right side colon, which may facilitate early detection of precursor lesions. Enhanced clinical experience with colonoscopies and awareness of the subtle nature of these precursor lesions may also establish a better preventive strategy in a subset of the patients.

REFERENCES

1. Jemal A, Bray F, Center MM, Ferlay J, Ward E, Forman D. Global cancer statistics. CA Cancer J Clin. 2011;61(2):69-90.
2. Kumar V, Abbas AK, Fausto N. Pathologic basis of disease. 2005; 7: 862-869.
3. Barras D. BRAF mutation in colorectal cancer: an update. Biomarkers in Cancer. 2015; 7(1): 9-12.
4. Sweetser, S, Smyrk TC, Sugumar A. Serrated Polyps: Critical Precursors to Colorectal Cancer. Expert Rev Gastroenterol Hepatol. 2011; 5(5): 627-635.
5. Yamane L, Scapulatempo-Neto, C, Reis RM, et al. Serrated pathway in colorectal carcinogenesis. World Journal of Gastroenterology. 2014; 20(10): 2634-2640.
6. Patel SG, Ahnen DJ. Prevention of Interval Colorectal Cancers: What Every Clinician Needs to Know. Clinical Gastroenterology and Hepatology. 2014; 12(1): 7-15.
7. Kalady MF, Dejullius KL, Sanchez JA, et al. BRAF mutations in colorectal cancer are associated with distinct clinical characteristics and worse prognosis. Dis Colon Rectum. 2012; 55(2): 128-133.
8. Microscopic images produced by Dr. Shereen Gheith and Dr. Jillian Grau (Figures 1 and 3a). 21 Jul 2016.

© 2016 Lehigh Valley Health Network

A PASSION FOR BETTER MEDICINE.™

610-402-CARE LVHN.org

