

Educating 5B Nurses On Comfort Care

Rebecca R. Shepley BSN, RN
Lehigh Valley Health Network, rebecca_r.shepley@lvhn.org

Elizabeth M. Ngugi BSN, RN
Lehigh Valley Health Network, elizabeth_m.ngugi@lvhn.org

Melissa L. Smith BSN, RN
Lehigh Valley Health Network, melissa_l.smith@lvhn.org

Follow this and additional works at: <https://scholarlyworks.lvhn.org/patient-care-services-nursing>



Part of the [Nursing Commons](#)

Let us know how access to this document benefits you

Published In/Presented At

Shepley, R., Ngugi, E., & Smith, M. (2016, August 19). *Educating 5B Nurses On Comfort Care*. Poster presented at LVHN Vizient/AACN Nurse Residency Program Graduation, Lehigh Valley Health Network, Allentown, PA.

This Poster is brought to you for free and open access by LVHN Scholarly Works. It has been accepted for inclusion in LVHN Scholarly Works by an authorized administrator. For more information, please contact LibraryServices@lvhn.org.

Educating 5B Nurses On Comfort Care

Rebecca Shepley BSN, RN. Elizabeth Ngugi BSN, RN. Melissa Smith BSN, RN

Lehigh Valley Health Network, Allentown, Pennsylvania

Background/Significance

According to the Joint Commission 2014 Hospital Accreditation Standards (Provision of Care: Standard PC.02.02.13), the patient's comfort and dignity receive priority during end of life care. While being oriented on 5B, the newly licensed nurses felt that end of life care was not being thoroughly addressed. The project plan was to provide end of life education to positively influence nurses attitude and enhance nurses confidence toward end of life care.

PROCESS / IMPLEMENTATION

- Surveying 5B nurses before and after education about end of life care with pre and post surveys.
- Education was implemented with a TLC PowerPoint.
- Surveys and education was implemented over a 4 week period.
- Total of 7 pre-education surveys and 5 post education surveys completed

Survey questions:

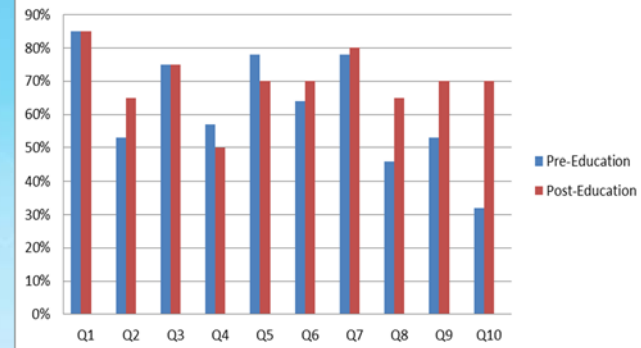
1. I am comfortable talking to patients and families about personal choice and self-determination
2. I am comfortable starting and participating in discussions about code status
3. I am comfortable talking with other health care professionals about the care of dying patients
4. I am comfortable helping to resolve difficult family conflicts about end-of-life care
5. I can recognize impending death (physiologic changes)
6. I know how to use non-drug therapies in management of patients' symptoms
7. I am able to be present with dying patients
8. I am familiar with palliative care principles and national guidelines
9. I am familiar with the services hospice provides
10. I feel that my workplace provides resources to support staff that care for dying patients

Evidence

- "Overcoming Barriers to Palliative Care Consultation," showed that barriers include misunderstandings about palliative care and lack of agreed-upon criteria for referral to palliative care. Nurses help overcome these barriers by ensuring patients, families, and physicians understand the services that palliative care provides and the benefits it brings to patients and families. (End of Life Care, 2015)
- "Barriers to Hospice Care and Referrals: Survey of Physicians' Knowledge, Attitudes, and Perceptions in a Health Maintenance Organization" findings showed physicians are concerned that terminally ill patients or their family members would think a referral to hospice is a cost saving measure (Brickner, 2004)
- "The impact of a palliative care educational component on attitudes toward care of the dying in undergraduate nursing students, Journal of Professional Nursing, 2011," results of this study indicate that education can have a positive effect on nursing students' attitudes toward care of the dying. Nursing students in the intervention group had a significant positive increase in their attitudes toward care of the dying after the intervention. The attitude change increased slightly after a 4-week period. (Mallory, 2011)

RESULTS

Pre and Post Education Survey of 5B Nurses



OUTCOMES

- After TLC education nurses reported feeling more confident in aspects of providing end of life care. Barriers to our study included fewer post education surveys completed than pre-surveys and high turnover of staff.

References

- Milic, M. M., Puntillo, K., Turner, K., Joseph, D., Peters, N., Ryan, R., & ... Anderson, W. G. (2015). Communicating With Patients' Families and Physicians About Prognosis and Goals of Care. *American Journal Of Critical Care*, 24(4), e56-64 1p. doi:10.4037/ajcc2015855
- Mallory, Judy. The impact of a palliative care educational component on attitudes toward care of the dying in undergraduate nursing students, *Journal of Professional Nursing*, 2011.
- End-of-life Care. Overcoming Barriers to Palliative Consultation. (2015). *Critical Care Nurse*, 35(5), 44-52 9p. Doi:10.4037/ccn2015357
- Brickner, L., Scannell, K., Marquet, S., & Ackerson, L. (2004). Barriers to hospice care and referrals: survey of physicians' knowledge, attitudes, and perceptions in a health maintenance organization. *Journal of Palliative Medicine*, 7(3), 411-418 8p.

© 2014 Lehigh Valley Health Network

A PASSION FOR BETTER MEDICINE.™



610-402-CARE LVHN.org