

An Adult Sepsis Identification and Resuscitation Pathway Innovative Tactics Beyond the Traditional Bundle

Lindsa Houck MSN, RN, NEA-BC, CEN, CPEN, PHRN
Lehigh Valley Health Network, lindsay_j.houck@lvhn.org

Reza Armaghan

Follow this and additional works at: <https://scholarlyworks.lvhn.org/patient-care-services-nursing>

 Part of the [Nursing Commons](#)

Published In/Presented At

Houck, L. J. (2016, Sept). *An Adult Sepsis Identification and Resuscitation Pathway Innovative Tactics Beyond the Traditional Bundle*. Poster Presented at: Southeastern Pennsylvania Association of Critical Care Nurses, Allentown, P.A.

Houck, L. J., Wirth, M. (2017, June 1-2). *An Adult Sepsis Identification and Resuscitation Pathway Innovative Tactics Beyond the Traditional Bundle*, Presented at: Emergency Nurses Association PA Chapter – Horizons Conference, Pittsburgh, PA.

Houck, L. Reitz, K. (2017, October). *An Adult Sepsis Identification and Resuscitation Pathway Innovative Tactics Beyond the Traditional Bundle*. Presented at: The PONL Nursing Leadership Conference, Gettysburg, PA.

An Adult Sepsis Identification and Resuscitation Pathway: Innovative Tactics Beyond the Traditional Bundle

Lehigh Valley Health Network, Allentown, PA

Purpose

This poster details an adult sepsis identification and resuscitation pathway in an academic, tertiary care Magnet® hospital, designed to comply with the 2016 Centers for Medicare & Medicaid Services Core Measures for Sepsis.

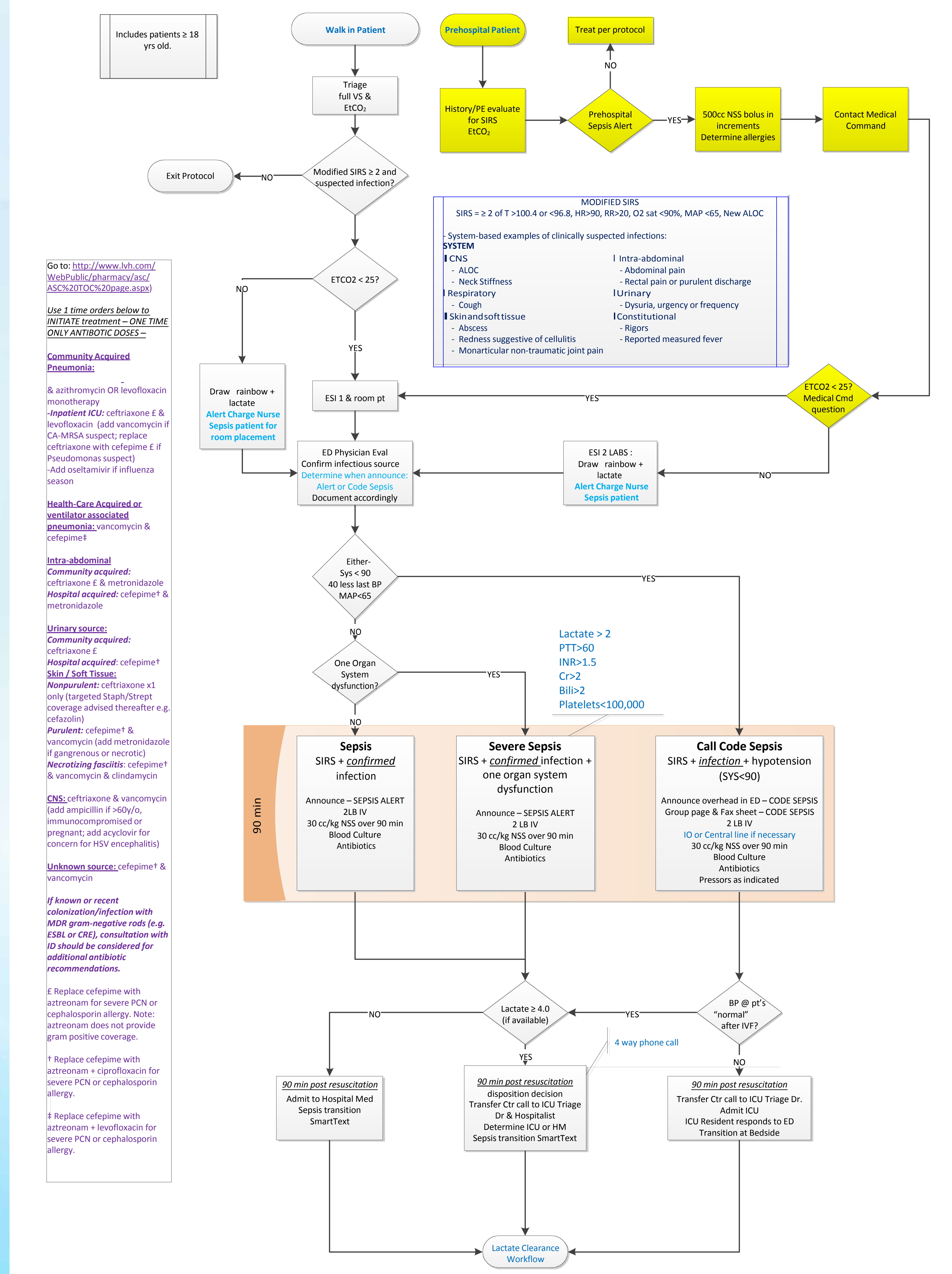
Evidence

Sepsis is the leading cause of death in hospitalized patients, with estimated mortality between 25-50 percent. Evidence shows that reducing mortality due to severe sepsis requires an organized process that guarantees the early recognition of severe sepsis, along with standard and consistent application of sepsis resuscitation algorithms. A seminal study in an acute, tertiary teaching facility focused initially on sepsis recognition and treatment in emergency departments (EDs), reducing overall sepsis mortality by approximately 50 percent in a six-year period (2008-2013).

References:

- Shakar-Hari M, Phillips GS, Levy ML, Seymour CW, Liu VX, Deutschman CS, Angus DC, Rubenfeld GD, Singer M. Developing a new definition and assessing new clinical criteria for septic shock. *JAMA* 2016;315(8):775-787. doi:10.1001/jama.2016.0289.
- Hunter C. Use End-tidal Carbon Dioxide to Diagnose Sepsis. *JEMS* 2014;March 3. <http://www.jems.com/articles/print/volume-39/issue-3/features/use-end-tidal-carbon-dioxide-to-diagnose-sepsis.html>

Adult LVHN Sepsis Resuscitation Pathway



Innovations

- Use of end-tidal CO₂ as a triage tool for early identification of sepsis
Evidence - End-tidal CO₂ less than 25 is indicative of a serum lactate level greater than 4, suggestive of severe sepsis
- Inclusion of the pre-hospital, emergency medical system community to facilitate early recognition and treatment of sepsis
- Aggressive and early fluid resuscitation in the pre-hospital setting and ED
- Designated bundled actions within 90 minutes compared to core measure 3 hour metrics
- 4-way disposition conference call including a bed management triage nurse and ED, intensive care and hospital medicine providers

Outcomes



610-402-CARE LVHN.org