

# Decisional Involvement and Professional Practice: Relation and Outcomes

Carolyn L. Davidson RN, PhD  
*Lehigh Valley Health Network, Carolyn\_L.Davidson@lvhn.org*

Kim S. Hitchings MSN, RN, NEA-BC  
*Lehigh Valley Health Network, Kim.Hitchings@lvhn.org*

John W. Nilson PhD, MSN, RN

Debra Peter MSN, RN-BC  
*Lehigh Valley Health Network, Debra.Peter@lvhn.org*

Cathy Schwartz MS, RN

Follow this and additional works at: <http://scholarlyworks.lvhn.org/patient-care-services-nursing>



Part of the [Nursing Commons](#)

---

## Published In/Presented At

Davidson, C. L., Hitchings, K. S., Nilson, J. W., Peter, D. Schwartz, C. (2016, Dec). *Decisional Involvement and Professional Practice: Relation and Outcomes*. Poster Presented at: 2016 Penn Medicine Nursing Research Conference, Philadelphia, PA.

This Poster is brought to you for free and open access by LVHN Scholarly Works. It has been accepted for inclusion in LVHN Scholarly Works by an authorized administrator. For more information, please contact [LibraryServices@lvhn.org](mailto:LibraryServices@lvhn.org).

# Decisional Involvement and Professional Practice: Relation and Outcomes

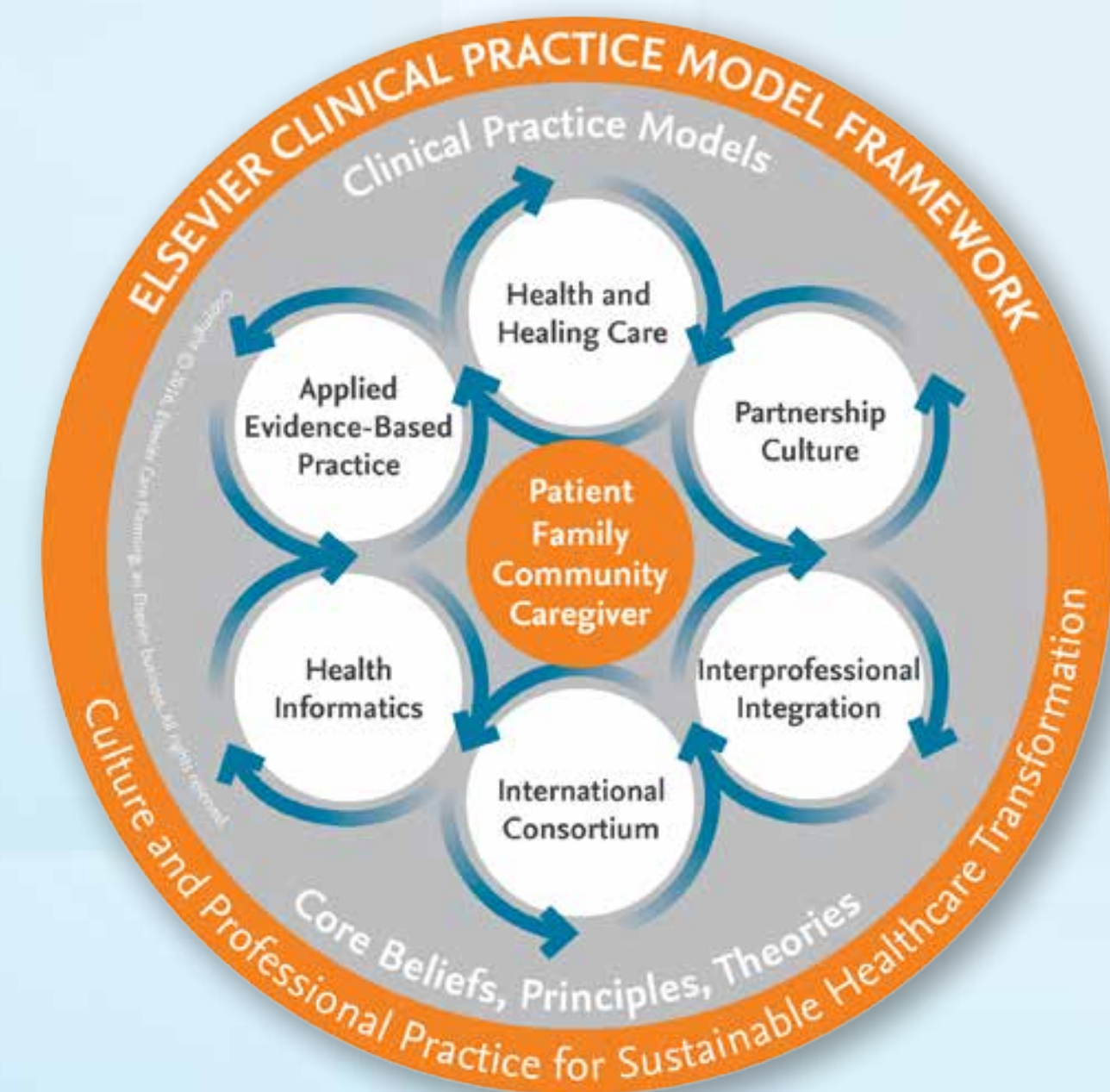
Carolyn L. Davidson, PhD, RN, CCRN, APRN, CPHQ; Kim Hitchings, MSN, RN, NEA-BC; John W. Nelson, PhD, MSN, RN; Debra Peter, MSN, RN-BC, CMSRN; and Cathy Schwartz, MS, RN  
Lehigh Valley Health Network, Allentown, PA

## BACKGROUND

Associated with implementation of an electronic clinical documentation system, Lehigh Valley Health Network (LVHN) adopted the Clinical Practice Model (CPM) Framework™. This model depicts components within which mastery is ideal for organizations to become the best places to give and receive care.

## METHODS

The Professional Practice Framework Assessment Survey (PPFAS, 65 items) and Shared Governance Decisional Involvement Assessment (SGDIA, 15 items) were used to assess professional practice and shared governance, respectively. The primary aim is to understand the relationship between shared governance, professional practice and outcomes. Potential respondents included RNs, technical and other interprofessional staff who provide direct care in a 1040 bed tertiary, Magnet® hospital in Pennsylvania.

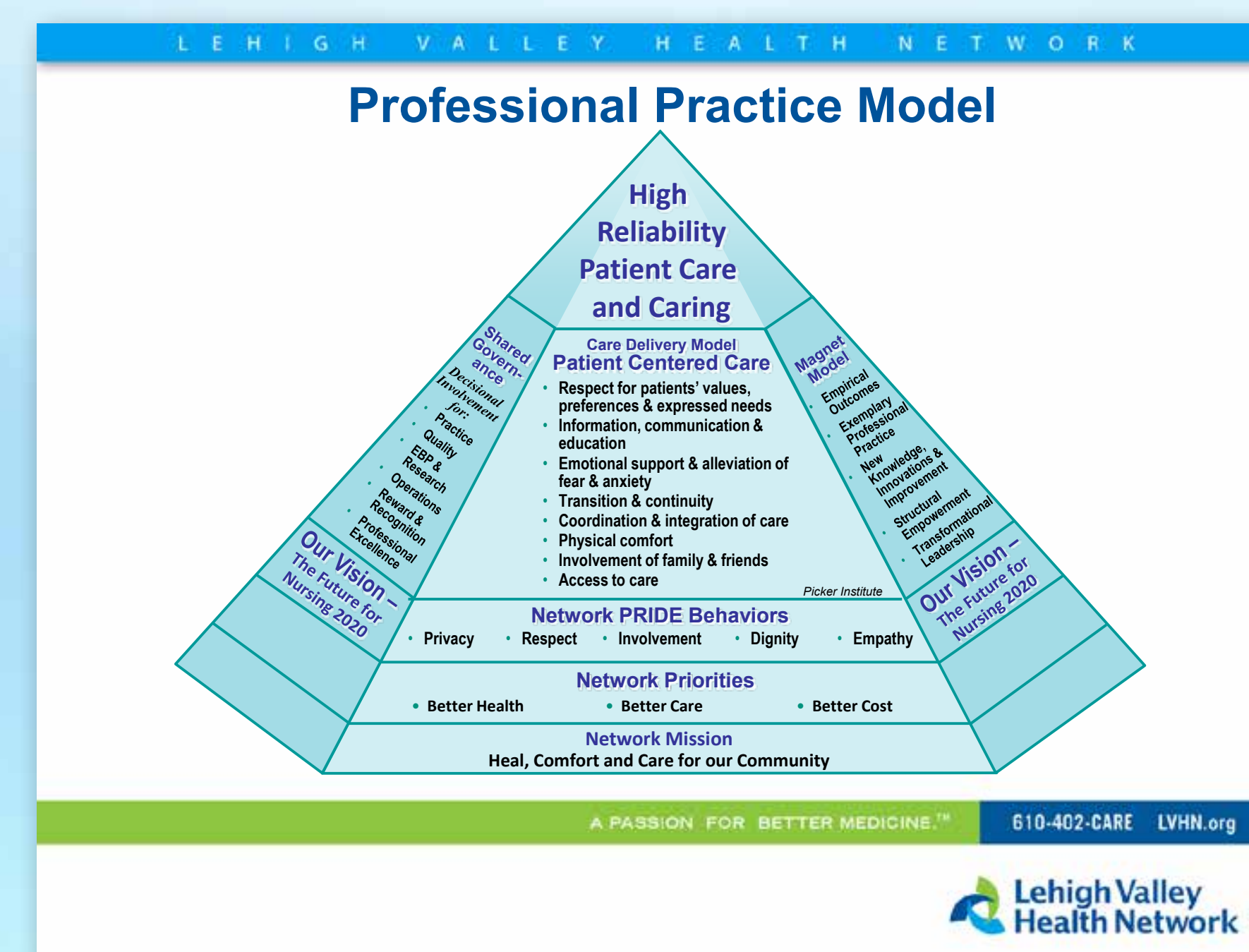


### Dimensions, PPFAS

- Shared purpose
- Dialogue
- Partnering relationships
- Networking councils
- Scope of practice
- Individual competency
- Integrated competency
- Evidenced-based practice
- Clinical tools
- Transformative capacity

### Dimensions, SGDIA

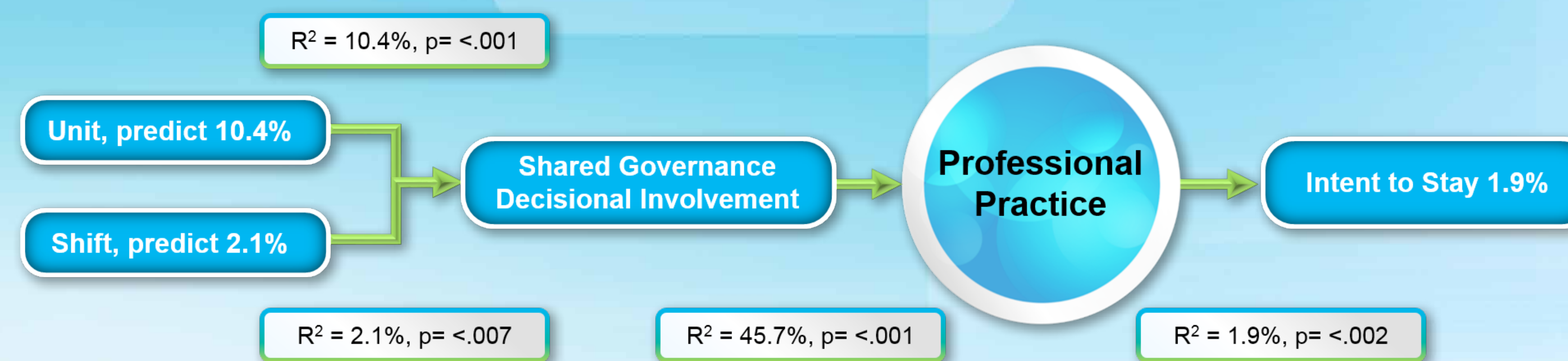
- Clinical practice and quality
- Staffing
- Professional development
- Fiscal management
- Collegial review and recognition
- Unit Professional Practice Model (PPM) operations
- Participation in activities beyond unit



## RESULTS

Two demographics were found to have a statistically significant difference in scores for shared governance involvement: unit worked predicted 10.4% of the variance of shared decision making while shift worked predicted 2.1% for a total of 12.5% explained variance. While none of the demographics demonstrated relationships to professional practice, the involvement in shared decision making predicted 45.7% of the professional practice variance. Lastly, professional practice predicted 1.9% of the variance for intent to stay (See Figure 1).

Figure 1. Final Model



## DISCUSSION

This is the first of two measures in this time series study of shared decision making and professional practice. As hypothesized, shared decision making has a significant impact on the professional practice score. Also supported was the hypothesis that shared decision making and professional practice would increase scores for intent to stay.

### References:

1. Elsevier. (2016). The Elsevier Clinical Practice Model Framework. Philadelphia: Elsevier.
2. Hitchings, K., Capuano, T., Bokovoy, J., & Houser, J. (2010). Development of a reliable and valid organization-specific professional practice assessment tool. *Nursing Administration Quarterly*, 34(1), 61-71. doi:10.1097/NAQ.0b013e3181c95edb
3. Wesorick, B. & Doebbeling, B. (2011). Emerging Perspectives: Lessons from the field: The essential elements for point-of-care transformation. *Medical Care*, 49 (12), S49-S58.

© 2016 Lehigh Valley Health Network



610-402-CARE LVHN.org