

## Community-engaged fRAP: a Mixed Methods Approach for Policy Change and Advocacy to Reduce Cancer Disparities in Hispanic Women

Autumn Kieber-Emmons MD, MPH  
Lehigh Valley Health Network, Autumn.Kieber-Emmons@lvhn.org

William L. Miller MD, MA  
Lehigh Valley Health Network, william.miller@lvhn.org

Benjamin F. Crabtree

Follow this and additional works at: <https://scholarlyworks.lvhn.org/family-medicine>



Part of the [Medicine and Health Sciences Commons](#)

### Let us know how access to this document benefits you

---

#### Published In/Presented At

Kieber-Emmons, A., Miller, W.L., & Crabtree, B.F. (2021). *Community-engaged fRAP: A mixed-methods approach for policy change and advocacy to reduce cancer disparities in Hispanic women*. Poster presented at Lehigh Valley Health Network, Allentown, PA.

This Poster is brought to you for free and open access by LVHN Scholarly Works. It has been accepted for inclusion in LVHN Scholarly Works by an authorized administrator. For more information, please contact [LibraryServices@lvhn.org](mailto:LibraryServices@lvhn.org).



# Community-engaged fRAP: a Mixed Methods Approach for Policy Change and Advocacy to Reduce Cancer Disparities in Hispanic Women

Autumn Kieber-Emmons, MD, MPH,<sup>1</sup> William L Miller, MD, MA,<sup>1</sup> Benjamin F Crabtree, PhD<sup>2</sup>

<sup>1</sup>Lehigh Valley Health Network, Allentown, PA, <sup>2</sup>Robert Wood Johnson Medical School, New Brunswick, NJ

## Clinical Relevance

- Cervical cancer is preventable and curable, yet Hispanic populations in certain areas of the country have higher mortality rates from invasive cervical cancer than non-Hispanic white women.

## Community Engaged Partnerships for Change

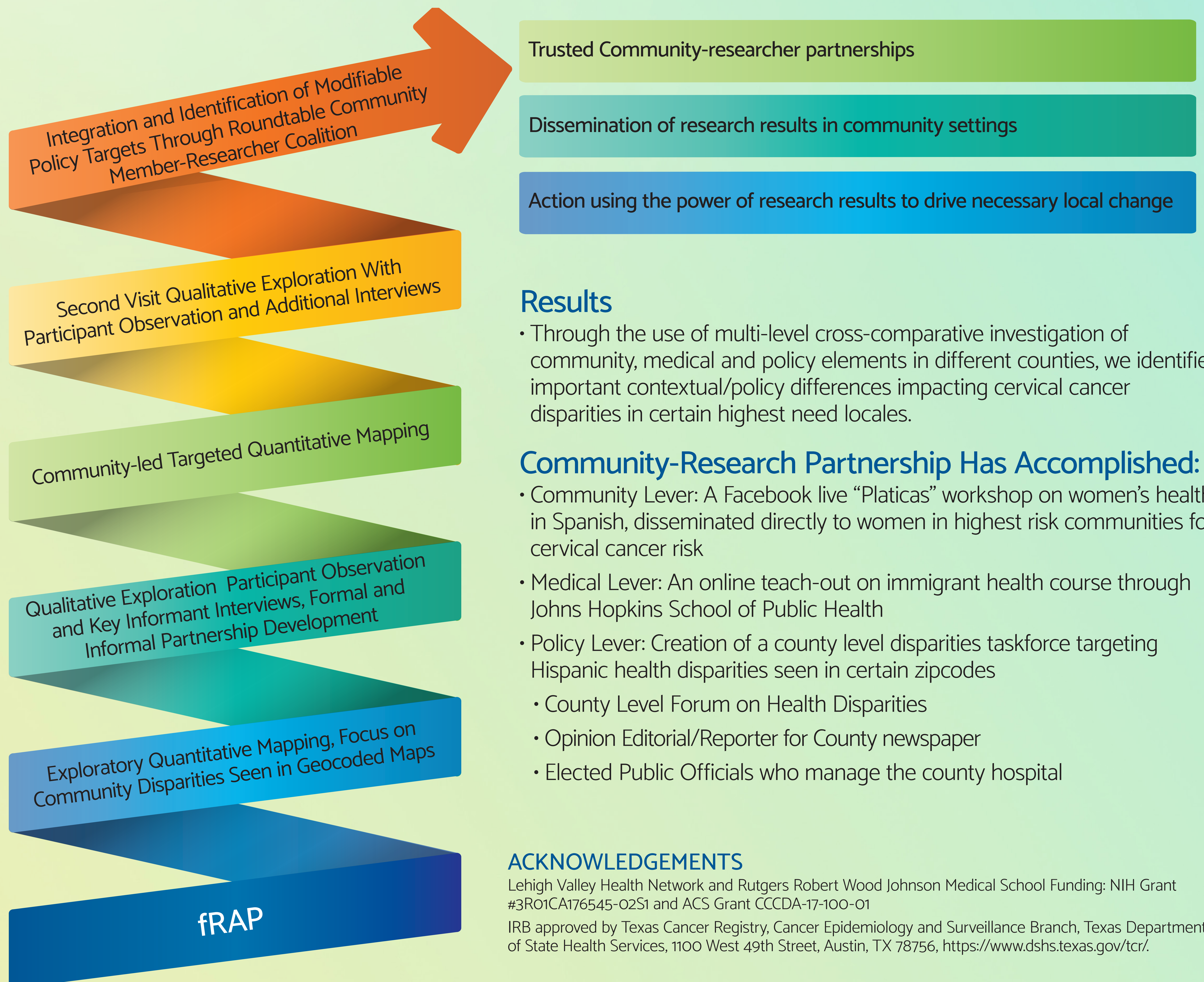
Our study aimed to develop community-engaged on-the-ground partnerships between our research team and local stakeholders to identify policy change targets for advocacy and action that could impact cervical cancer disparities in geographic areas of high need

## Methods

- A mixed methods study utilizing fRAP (focused Rapid Assessment Process)
- Multi-level investigation (community, medical, policy level) using GIS mapping to identify areas of interest for qualitative participant observation, interviews, focus

## Dataset

- Quantitative geocoding of cervical cancer cases (1995-2015) to ZCTA level in three Texas counties, Bexar, Dallas, Tarrant
- Qualitative interviews with 42 key informants from three levels of interest, community, medical and policy



## Results

- Through the use of multi-level cross-comparative investigation of community, medical and policy elements in different counties, we identified important contextual/policy differences impacting cervical cancer disparities in certain highest need locales.

## Community-Research Partnership Has Accomplished:

- Community Lever: A Facebook live “Platicas” workshop on women’s health, in Spanish, disseminated directly to women in highest risk communities for cervical cancer risk
- Medical Lever: An online teach-out on immigrant health course through Johns Hopkins School of Public Health
- Policy Lever: Creation of a county level disparities taskforce targeting Hispanic health disparities seen in certain zipcodes
  - County Level Forum on Health Disparities
  - Opinion Editorial/Reporter for County newspaper
  - Elected Public Officials who manage the county hospital

## ACKNOWLEDGEMENTS

Lehigh Valley Health Network and Rutgers Robert Wood Johnson Medical School Funding: NIH Grant #3R01CA176545-02S1 and ACS Grant CCCDA-17-100-01

IRB approved by Texas Cancer Registry, Cancer Epidemiology and Surveillance Branch, Texas Department of State Health Services, 1100 West 49th Street, Austin, TX 78756, <https://www.dshs.texas.gov/tcr/>.