

Current State and Future of Nursing Research at LVHN.

Anne Panik MS, RN, NEA-BC
Lehigh Valley Health Network, Anne.Panik@lvhn.org

Deborah Swavely DNP, RN
Deborah.Swavely@lvhn.org

Follow this and additional works at: <https://scholarlyworks.lvhn.org/patient-care-services-nursing>



Part of the [Nursing Commons](#)

Let us know how access to this document benefits you

Published In/Presented At

Panik, A. Swavely, D. (2010, October 04). *Current State and Future of Nursing Research at LVHN*.
Presentation Presented at: Lehigh Valley Health Network, Allentown, PA.

This Presentation is brought to you for free and open access by LVHN Scholarly Works. It has been accepted for inclusion in LVHN Scholarly Works by an authorized administrator. For more information, please contact LibraryServices@lvhn.org.

Research Day 2010

Current State and Future of Nursing Research at LVHN

***Anne Panik*, Senior Vice President**

Patient Care Services and Care Continuum

***Deborah Swavely*, Administrator**

Division of Community Health and Health Studies

A PASSION FOR BETTER MEDICINE.™



Objectives

- Participants will describe how research fits into the Evidence-based Practice (EBP) model.
- Participants will apply the components of the Vision Statement to advance their practice.

What Changed?

- Nursing established a collaborative relationship with Community Health and Health Studies
- Common goal to improve patient care and outcomes

Started with a Blank Page



Vision Statement

- Serve as a locally and nationally recognized nursing center of excellence that generates and utilizes evidence-based practice to optimize clinical and process outcomes.

What Does the Vision Mean?



Research . . .

- Research is not defined by discipline
- Research is collaborating with those who have diverse clinical and academic backgrounds
- Collaboration depends on mutual respect and willingness to learn from one another

Three Things



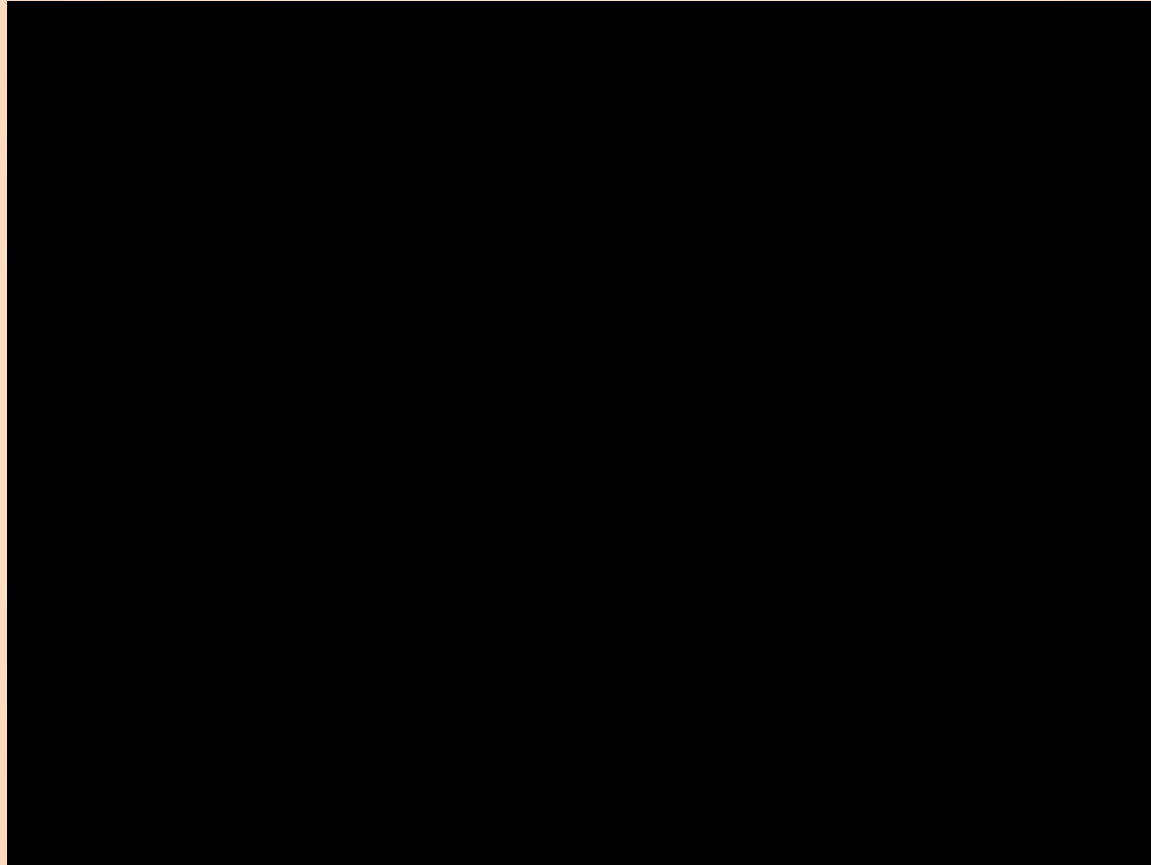
Challenges of Translating Research into Practice

$$\mathbf{A+B = C}$$

$$\mathbf{A+B \neq C}$$

- The gap between research and translation into clinical practice
- Complexities of translation that are affected by three domains:
- The evidence itself; the contextual factors; and facilitation

Communication



Speaking the Same Language

- **Leave baggage**
- **Take a fresh
look**
- **Get on the same
page**

Starting Anew

**Two divisions
working together:**

- to take evidence-based practice to the next level
- to take research to the next level

Looking Back in Order to Move Forward

“Where and how does a clinician answer a practice question?”

**A-3 uncovered the need
to rethink our:**

- **Purpose - Culture of Inquiry**
- **Framework – EBP/Research Model**
- **Processes – Mentors and Procedures**

Strategic Planning

- Assembled a small working group.
- Looked at the literature.
- Spoke to experts:
 - Dr. Robin Newhouse – U of Maryland
 - Dr. Cronenwett – UNC
 - Dr. Rice – LSU
- Focused on identifying a comprehensive decision making EBP model.

Investigating Which Model is Best Fit.

Is the Model:

Clear and concise so diagrammatic representation would be quick to WHAT assimilation of concepts and organizational design?

Comprehensive from question, literature, research, evaluation and feedback?

Easy to use when applying the concepts to direct healthcare issues?

Generalizable to varied healthcare programs?

Supported in the literature?

An organizational decision-making process?

A good fit with our organization?

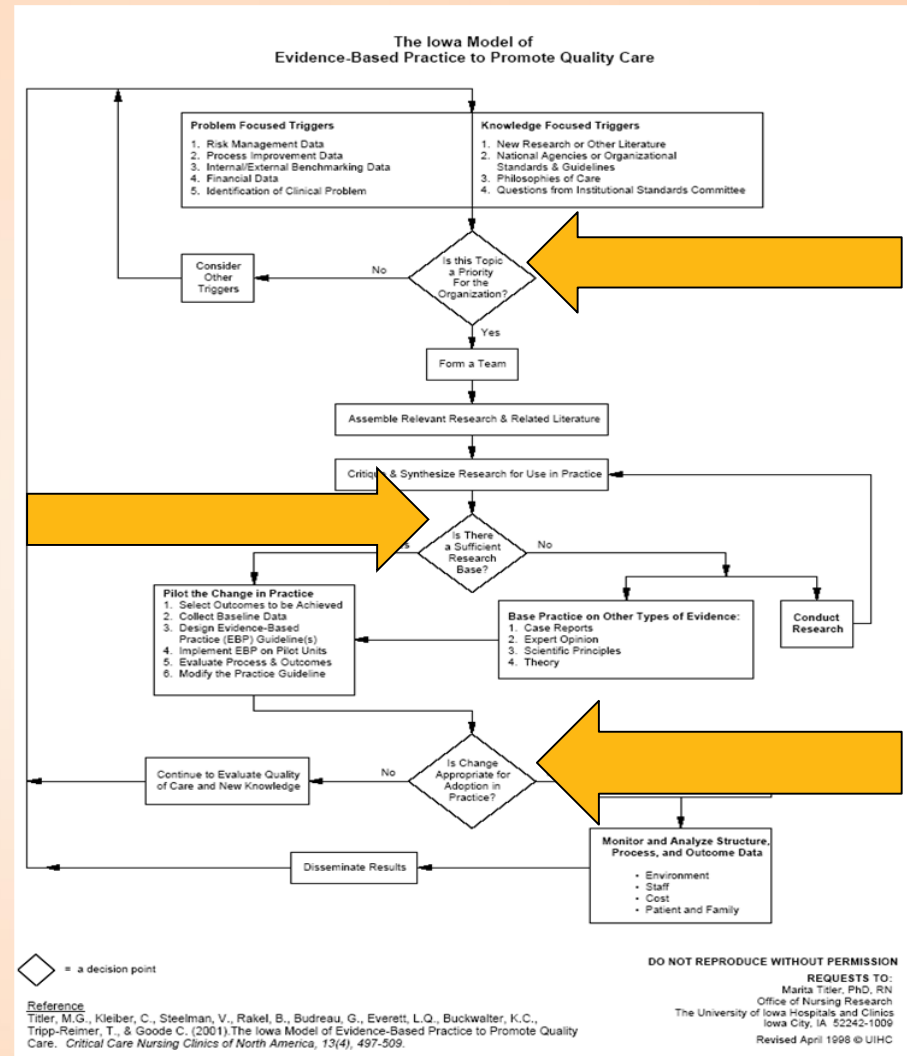
Adaptable as our needs change or healthcare changes?

What part of this model do I like? Which part do I not like?

One that I will commit to follow for all decision-making needs?

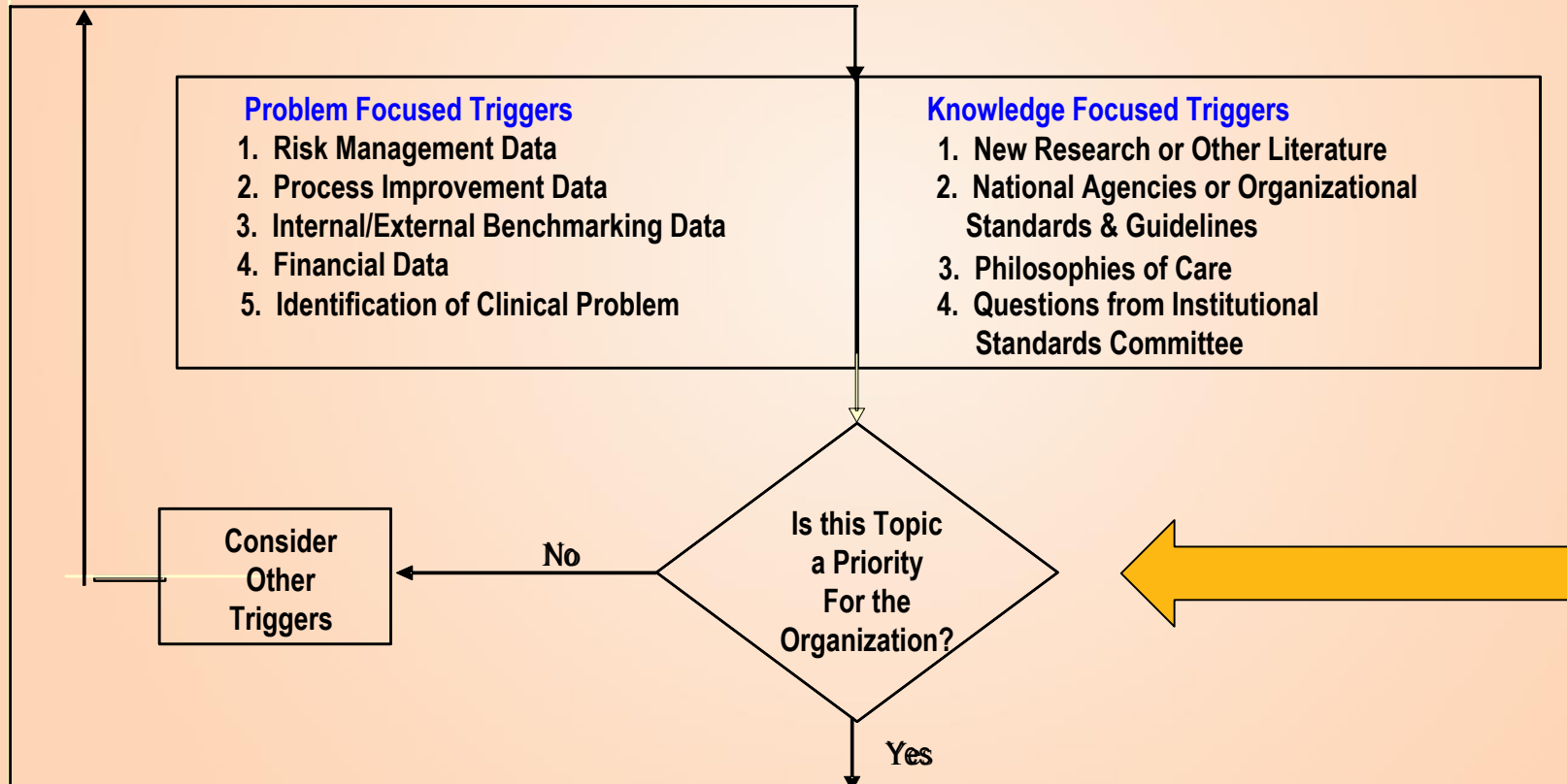
The IOWA Model™

- Comprehensive decision-making process tool
- Familiar format – step by step algorithm
- Requires three decisions to be made



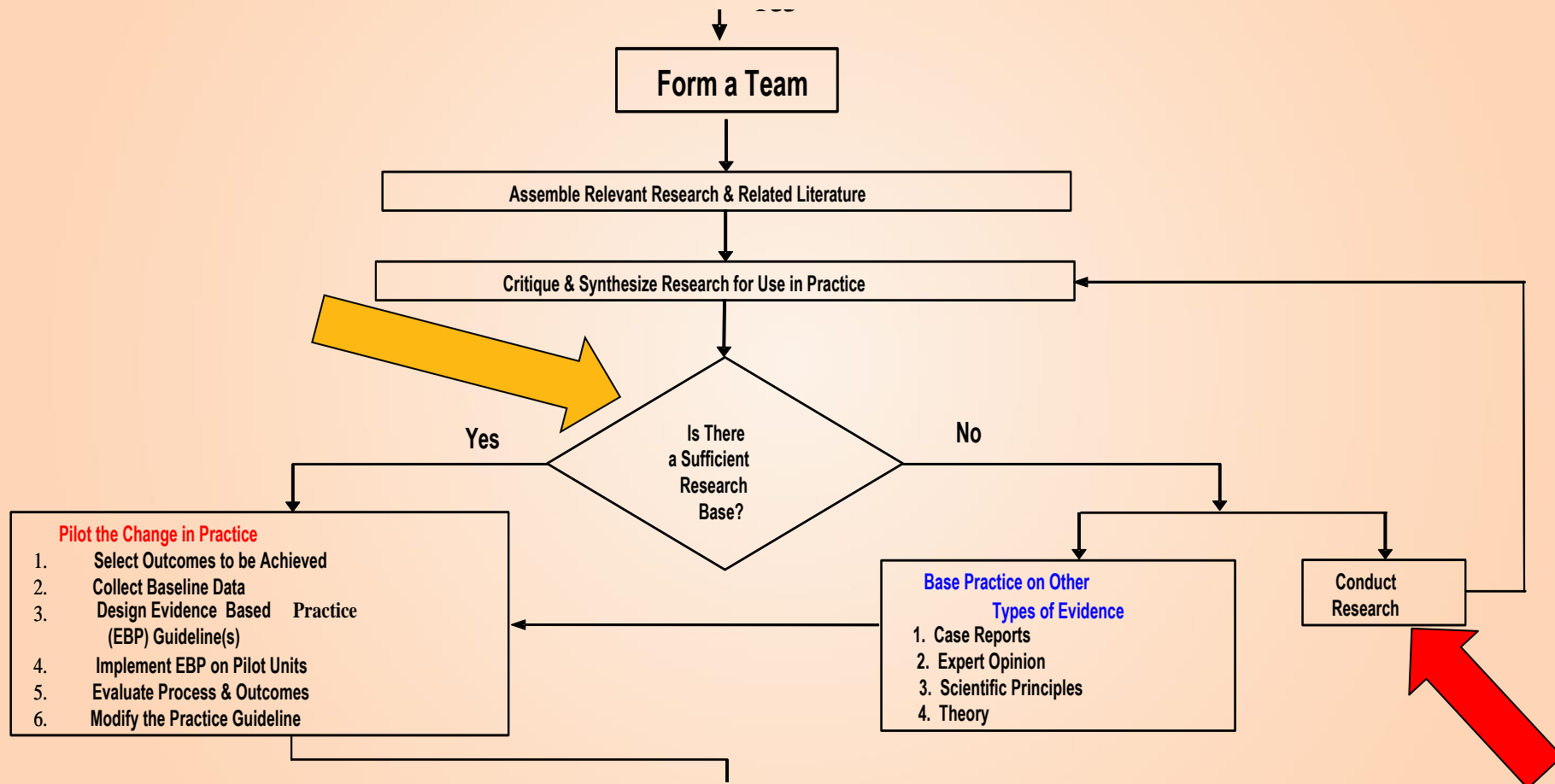
Question/Issue/Problem Phase Driver

The Iowa Model of Evidence - Based Practice to Promote Quality Care



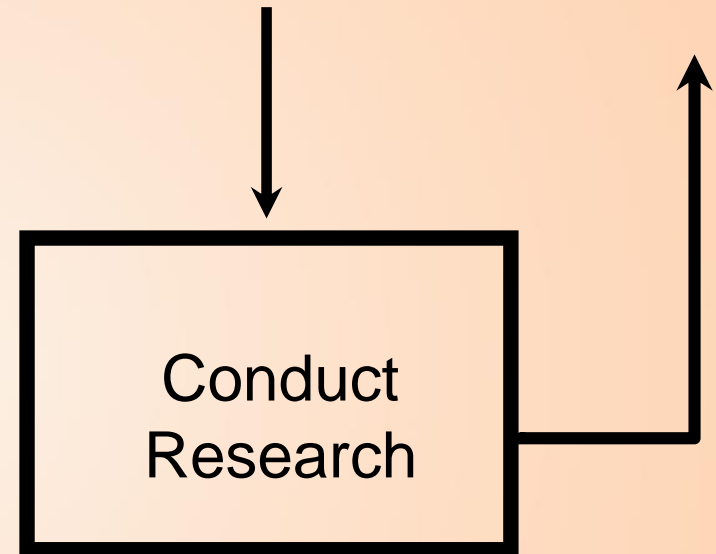
Knowledge Phase

EBP and Research Mentors



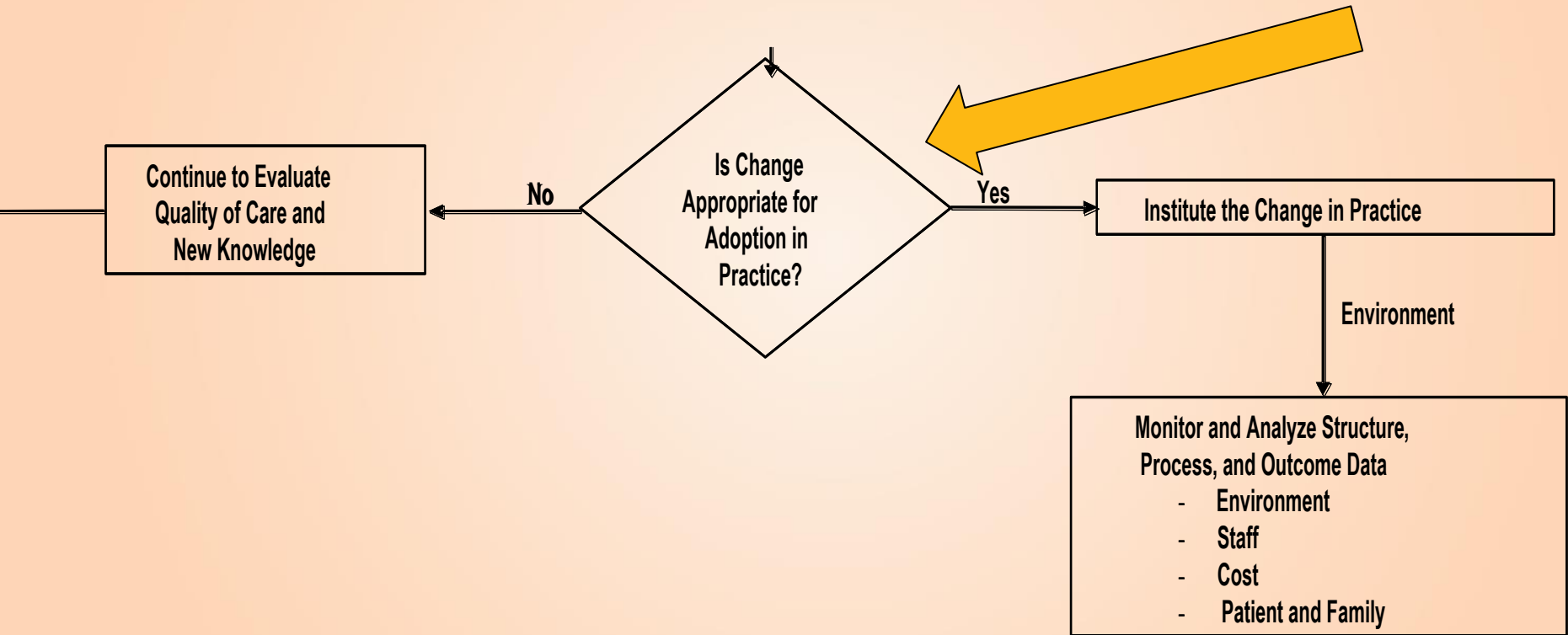
Research Driving EBP

- **Develop process**
 - University of South Florida
 - Local Academic Partners
 - Consultants
- **Developing Scientific Research Review Committee**
- **Skill Development Curriculum**



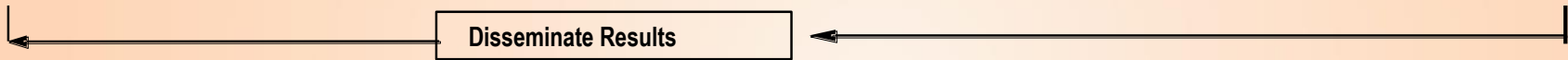
Implementation Phase

Implementation and Measurement Mentors



Dissemination Phase/Stage

Publishing mentors



Operationalizing through EBP/Research Council

- **Standardize workflow – build on each others' work**
- **Standardize expectations – build on each others' experience**
- **Provide support throughout the process**

Mentorship and Support Throughout the Process

- Build on our own internal pool of mentors
- Work with local universities and consultants
- University of South Florida (USF)

Skills Development

- **Evaluating strength of research**
- **Translating research into practice**
- **Evaluating impact of practice change**

Looked good on paper!

Not in practice...

The Future is Now!

Evidence-Based Practice/Research Council

Our destination:

- **Vision**: Serve as a locally and nationally recognized center of excellence that generates and utilizes evidence-based practice to optimize clinical and process outcomes.
- **Scope**: All nurses in LVHN.

Today We Will Learn From Our Experts

Today's Program:

- Mentoring Ideas
- IRB - Confidentiality
- Data Literacy and Management
- Qualitative Research Methods
- Critiquing Evidence
- Grant Writing
- Publishing

So let it begin...Enjoy the Day!