

The Center for Educational Development and Support

Lehigh Valley Health Network

Follow this and additional works at: <https://scholarlyworks.lvhn.org/historicalarchives>

Let us know how access to this document benefits you

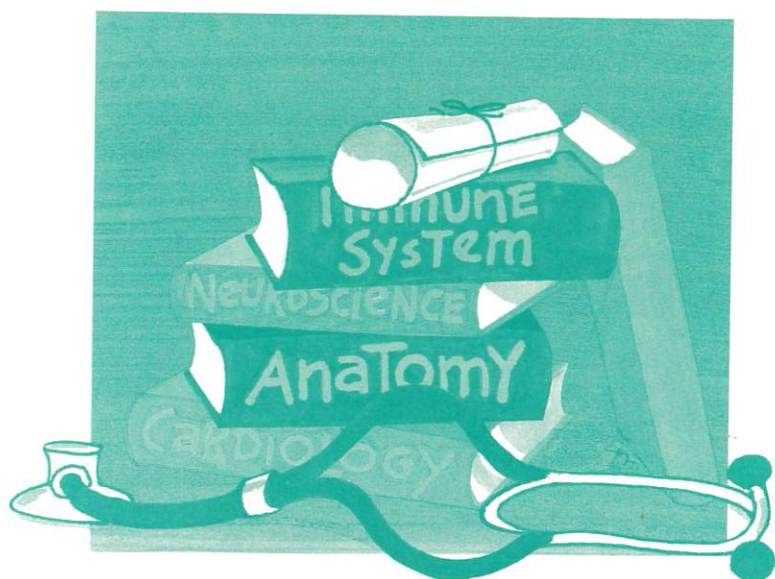
Published In/Presented At

(2001). The Center for Educational Development and Support. *LVHN Scholarly Works*. Retrieved from <https://scholarlyworks.lvhn.org/historicalarchives/772>

This Newsletter is brought to you for free and open access by LVHN Scholarly Works. It has been accepted for inclusion in LVHN Scholarly Works by an authorized administrator. For more information, please contact LibraryServices@lvhn.org.

The Center for Educational Development & Support

at Lehigh Valley Hospital
Allentown, Pennsylvania



LEHIGH VALLEY
**HOSPITAL AND
HEALTH NETWORK**

Lehigh Valley Hospital and Health Network

Center for Educational Development & Support

17th & Chew Streets - Suite 601

P. O. Box 7017

Allentown, PA 18105-7017

Phone 610-402-2501 • Fax 610-402-2203

Email Charlene_C.Young@lvh.com

Audiovisual & Media Services
610-402-8325

Continuing Education
610-402-2584

Health Sciences Library
610-402-8410

Educational Technology
610-402-2475

Medical Education
610-402-2554

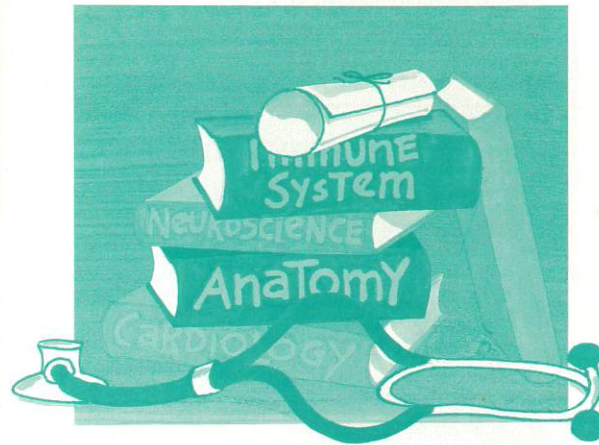
Nursing Education
610-402-2277

Patient Education
610-402-2484

Grants & Community Outreach
610-402-2501

The Center for Educational Development & Support

at Lehigh Valley Hospital
Allentown, Pennsylvania



LEHIGH VALLEY
HOSPITAL AND
HEALTH NETWORK

Lehigh Valley Hospital and Health Network

is a unique health system that provides a very rich learning opportunity for students. It is comprised of a 573-bed suburban trauma center (LVH-CC), a 71-bed urban hospital (LVH-17), a 148-bed community hospital (LVH-Muhlenberg), and a seven county in-home hospice program.

As one of Pennsylvania's oldest teaching hospitals, we offer a vast array of services to maintain wellness and enhance life's quality. LVHHN has Pennsylvania's first Level 1 Trauma Center and remains the only one in the Lehigh Valley Region. Key clinical areas are: cancer treatment, cardiovascular medicine, mental health, neuroscience, pediatrics, surgery services, trauma/critical care, women's health, perinatal care, kidney transplantation and burn treatment. During fiscal year 2000, across our network, we cared for more than 37,800 acute inpatients, 1,100 sub-acute inpatients, had 94,300 emergency room visits, and delivered more than 3,400 babies.

At the *Center for Educational Development and Support*, we train physicians, nurses and other allied health practitioners, as well as offer resources for life-long learning for all health care providers.

Our goal is to foster an educational culture by providing first rate quality programs and specialty courses to meet the needs of health professionals. The strategic plan for education at LVHHN, *Medicine in the Community: Learning to Serve and Innovate*, envisions the health care practitioner as encompassing multiple simultaneous roles. These roles reflect the necessity for individual development as well as place the practitioner firmly in the context of the community. The health practitioner roles articulated in the strategic plan are teacher, learner, health advocate, community leader, champion of quality, community servant and clinical innovator. By implementing the strategic plan, activities can be examined through its effects in helping to develop, articulate, reinforce and model these roles.

Educational activities sponsored by the Center for Educational Development and Support are partially supported by a grant from The Dorothy Rider Pool Health Care Trust.

Health Sciences Library

The Health Sciences Library offers comprehensive information services including consultation on research, reference and literature searches to meet the needs of the hospital and medical staff. Information on patient care, education, research and management is readily available. Medline, Micromedex and the library's card catalog are accessible at computer workstations in the library, on patient units and in hospital departments.

Educational Technology

Educational technologists develop, produce and evaluate software to enhance the education process and activities. Other services include curriculum development, videography and technology consulting. Available products include courseware in medicine, nursing and the allied health professions.

Undergraduate Medical Education

Approximately 500 medical and physician assistant students rotate through LVHHN in clerkships and electives during an academic year. Third-year medical students from our affiliates Penn State, PCOM, MCP, Hahnemann and Temple rotate through family practice, internal medicine, general surgery, OB/GYN, pediatrics and psychiatry departments. The undergraduate medical student staff schedules rotations, presents orientation, assigns housing and requests computer access for the students.

Orientation, housing, safety, computer training and other customer services for medical students are provided by the medical education staff.

Graduate Medical Education

LVHHN has a long-standing commitment to excellence in medical education. Training approximately 240 residents and visiting residents a year, LVHHN's organized educational programs offer opportunities aimed at developing and maintaining life-long learning skills. Graduate medical education programs focus on the development of clinical skills and professional competencies while ensuring safe and appropriate patient care.

Graduate Medical Education (GME) training is offered in dentistry, emergency medicine, family practice, internal medicine, obstetrics and gynecology, colon/rectal surgery, general surgery, plastic surgery, surgical critical care and transitional year.

The GME office is responsible for residency program administration, institutional accreditation, research and creative writing support for residents, orientation of incoming residents, resident graduation, primary contact for the PA Board of Medicine/Osteopathic Medicine for licensure of residents and processes all graduate training agreements. Staff are voting members of the GME Committee, an organized administrative system which oversees all residency programs.

Nursing Education

Education and programming services are provided for nursing and allied health staff at LVHHN and other institutions. Services include employee education and development, orientation, competency assessment, specialty computer-assisted instruction, consultation, resource development, outreach programs, clinical product evaluation and implementation, coordination of undergraduate and graduate nursing clinical affiliations and transcript processing.

Physician and Nursing Continuing Education

A wide variety of physician and nursing continuing education programs ensure that staff are highly trained in the newest diagnostic and treatment practices to improve patient outcomes. LVHHN is approved as a provider of continuing education in nursing by the PA State Nurses Association and by the PA Medical Society to sponsor continuing medical education for physicians.

Patient Education

Acquisition, development and distribution of educational materials to patients and their families is the responsibility of the patient education staff. This requires collaboration with multiple disciplines to assure that materials provided are precise, consistent and easy to understand.

Other responsibilities include assistance with material development, program planning, and a clearinghouse for materials.

Audiovisual and Media Services

Equipment and technical support including consultation, training and equipment demonstrations are offered to enhance educational programs. Using satellite downlink and video-conferencing/distance learning, we expand our audience for education beyond the hospital walls. Programs can be audio and/or videotaped for future reference.

Grant and Community Outreach

Our grant office manages the day to day functions of the various funding sources for educational activities, including identifying funding sources, coordinating proposal development and submission, monitoring budgets and management reporting. Through community outreach, staff participates with various community service agencies, coordinates high school-to-work activities, and college internships, tours, shadow days, and summer internships.