

The Story of LVHNN- Our Healing Heritage

Lehigh Valley Health Network

Follow this and additional works at: <https://scholarlyworks.lvhn.org/historicalarchives>

Let us know how access to this document benefits you

Published In/Presented At

(2004). The Story of LVHNN- Our Healing Heritage. *LVHN Scholarly Works*. Retrieved from <https://scholarlyworks.lvhn.org/historicalarchives/773>

This Newsletter is brought to you for free and open access by LVHN Scholarly Works. It has been accepted for inclusion in LVHN Scholarly Works by an authorized administrator. For more information, please contact LibraryServices@lvhn.org.

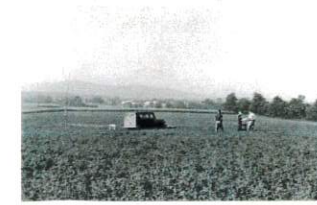
The Story of LVHHN - Our Healing Heritage



LEHIGH VALLEY
HOSPITAL AND
HEALTH NETWORK



Timeline - "The Healing Heritage of LVHHN"



- ◆ TAH opens – 30 beds
- ◆ School of Nursing opens
- ◆ 249 surgical procedures

One of the 1st X-ray machines in country

TAH – 50,000 patients treated

May 1945 – World War II ends

Cost \$7.00/day for hospital bed at TAH

- ◆ Cost \$13.00/day for hospital bed at TAH
- ◆ MMC Ladies Auxiliary officially incorporated

Muhlenberg Medical Center (original name) opens

- ◆ Cost \$28.00/day for hospital bed at TAH
- ◆ 1st Psychiatric patient at MMC

1899 **1904** **1909** **1911** **1926** **1935** **1945** **1946** **1948** **1954** **1957** **1960** **1961** **1967** **1968** **1970**

TAH – 4,000 patients treated

Sacred Heart Hospital opened – Catholic Hospital

TAH – 100,000 patients treated

TAH – 500,000 patients treated

Conductor spotted at TAH

Men of Muhlenberg officially incorporated

- ◆ **AHEAD fund campaign – Leonard Pool donates \$5 million for CC site**
- ◆ **Pool established vision – Clinical Innovation/ Service Excellence**

Emergency room opens at MMC



1st Open Heart Surgery performed at TAH

Healthcare begins to promote "Prevention"

- ◆ Leonard Pool dies
- ◆ Pool Trust established

- ◆ MMC – 3 story South Wing
- ◆ MMC – Ambulatory wing

- ◆ ASH dissolved: LVHC (CC) & TAH (17)
- ◆ HealthEast formed
- ◆ MMC 4th Floor South wing added

Lehigh Valley Health Services established

School of Nursing (SON) closes/ graduates last

- ◆ Press Ganey at CC
- ◆ 1st Kidney Transplant at CC
- ◆ 1st MRI at CC
- ◆ Muhlenberg Rehabilitation Center opens
- ◆ MHC receives JCAHO accreditation with commendation

1971 **1972** **1973** **1974** **1975** **1977** **1979** **1981** **1982** **1985** **1986** **1987** **1988** **1990** **1991** **1992** 

Interviews for LVHC conducted at Farmhouse

- ◆ CC site (ASH) Allentown & Sacred Heart Hospital opens
- ◆ Burn Center opens

Cost \$99.00/day for hospital bed at LVHC & TAH

LVHC designated PA's 1st Trauma Center

- ◆ Friends of Nursing established
- ◆ MMC changed to Muhlenberg Hospital Center (MHC)

- ◆ LVHC & TAH merge
- ◆ Anderson Wing at CC opens

MHC – Operating room, privately built magnetic resonance imaging & medical office building added

- ◆ 1st HC4 data released
- ◆ MHC east wing completed
- ◆ Miller Blood Center renamed Banko Family Community Center



LVHHN Timeline continued



1993

- ◆ John & Dorothy Morgan Cancer Center (JDMCC)
- ◆ ACAS study
- ◆ Cardiac Catherization Lab completed at MHC

1994

- ◆ Kolb Pavilion opens at MHC
- ◆ Lehigh Valley Physician Group (LVPG) established
- ◆ Affiliation with Penn State College of Medicine at Hershey Medical Center
- ◆ MHC— JCAHO accreditation with commendation

1995

Patient Centered Care (PCC) rolled out

1996

- ◆ Working Wonders Program rolled out
- ◆ 35th Anniversary of MHC

1997

- ◆ PRIDE Initiative roll out
- ◆ MHC merges w/LVHHN
- ◆ Press Ganey Survey at MHC
- ◆ Marketing Theme “All Hospitals Are Not Alike”
- ◆ LVHHN ranked in Best Hospital Report – US News & World Report – Cardiac, Geriatrics
- ◆ Press Ganey at LVPG

1998

- ◆ Clinical Innovation & Service Excellence – Separate/Differentiate LVHHN
- ◆ Scorecard Roll out
- ◆ CHOP Affiliation
- ◆ LVHHN ranked in Best Hospital Report – US News & World Report – Heart, Urology
- ◆ LVHHN - JCAHO accredit. w/commendation

1999

- ◆ Employee Satisfaction Survey completed
- ◆ Health Center at Trexlertown opens

2000

- ◆ Jaindl Family Pavilion opens
- ◆ MHC name change
- ◆ Cost \$630.00/day for hospital bed at LVHHN
- ◆ Licensed for 750 beds
- ◆ +6,000 employees & +1,200 physicians on staff
- ◆ Treat over 37,000 inpatients, 90,000 ER patients
- ◆ 120,000 Home care visits, 40,000 surgeries
- ◆ 400,000 patients treated annually

2001

- ◆ Osteopathic Emergency Medicine Residency Program created at LVH-M
- ◆ Sleep Disorders Centers -LVH-17 and LVH-M
- ◆ The Children’s Hospital of Philadelphia’s Specialty Care Center opens at LVH-M
- ◆ Peggy Fleming Endowed Chair in Nursing established
- ◆ Hamburg Community Health Center opens
- ◆ Health Center at Hellertown opens
- ◆ LVHHN received The Carl & Anne Anderson \$29 million Trust
- ◆ Behavioral Health Science Center opens at LVH-M
- ◆ 2649 Medical Office Building opens – LVH-M

2002

- ◆ \$60 million expansion at LVH-M unveiled
- ◆ Care at 17th&Chew is revitalized with a new Center for Healthy Aging, Diagnostic Care Center & a nostalgic historic look.
- ◆ Heart Surgery offered at LVH-M with The Ideal Patient Experience
- ◆ Nurses attain Magnet status

2003

- ◆ First pancreas transplant
- ◆ Construction begins on new LVH-M Building
- ◆ Year’s only National Quality Health Care Award

2004+

What does the future hold for LVHHN?

Do You Speak “LVHHN-ese”?

Service Theme	“All Hospitals Are Not Alike”
Clinical Innovation	High Tech (technology)
Service Excellence	High Touch
Tricycle	Patient Care, Research, Education
4 Priorities	OI, Care Management, Member Satisfaction, Functional Plan
PRIDE	Behavioral expectations of LVHHN employees
Scorecard	Quality satisfaction mechanism that tracks operational ratios on hours basis
Working Wonder	\$\$\$’s for Ideas
Rewards & Recognition	Over 90 ways LVHHN rewards & recognizes employees
T.E.A.M.WORK	Together Everyone Achieves More
PCC	Patient Centered Care
Service Stars	LVHHN Employees
Campus	LVH-CC, LVH-17, LVH-M

