

Use of an electronic health record to identify prevalent and incident cardiovascular disease in type 2 diabetes according to treatment strategy.

Mary T. Korytkowski MD

Esra Karslioglu French

Maria Brooks

Dilhari DeAlmeida

Justin Kanter

See next page for additional authors

Follow this and additional works at: <https://scholarlyworks.lvhn.org/medicine>



Part of the [Medical Sciences Commons](#)

Published In/Presented At

Korytkowski, M. T., Karslioglu French, E., Brooks, M., DeAlmeida, D., Kanter, J., Lombardero, M., & ... Siminerio, L. (2016). Use of an electronic health record to identify prevalent and incident cardiovascular disease in type 2 diabetes according to treatment strategy. *BMJ Open Diabetes Research & Care*, 4(1), e000206. doi:10.1136/bmjdr-2016-000206.

This Article is brought to you for free and open access by LVHN Scholarly Works. It has been accepted for inclusion in LVHN Scholarly Works by an authorized administrator. For more information, please contact LibraryServices@lvhn.org.

Authors

Mary T. Korytkowski MD; Esra Karslioglu French; Maria Brooks; Dilhari DeAlmeida; Justin Kanter; Manuel Lombardero; Vasudev G. Magaji MD, MS; Trevor Orchard M.B.B.Ch.,M.Med.Sci,FAHA,FACE; and Linda Siminerio

Use of an electronic health record to identify prevalent and incident cardiovascular disease in type 2 diabetes according to treatment strategy

Mary T Korytkowski,¹ Esra Karslioglu French,² Maria Brooks,³ Dilhari DeAlmeida,⁴ Justin Kanter,⁵ Manuel Lombardero,⁶ Vasudev Magaji,⁷ Trevor Orchard,³ Linda Siminerio⁸

To cite: Korytkowski MT, Karslioglu French E, Brooks M, *et al*. Use of an electronic health record to identify prevalent and incident cardiovascular disease in type 2 diabetes according to treatment strategy. *BMJ Open Diabetes Research and Care* 2016;**4**: e000206. doi:10.1136/bmjdr-2016-000206

► Additional material is available. To view please visit the journal online (<http://dx.doi.org/10.1136/bmjdr-2016-000206>).

Received 3 February 2016
Revised 30 March 2016
Accepted 2 May 2016

This final article is available for use under the terms of the Creative Commons Attribution Non-Commercial 3.0 Licence; see <http://drc.bmj.com>



CrossMark

For numbered affiliations see end of article.

Correspondence to

Dr Mary T Korytkowski;
mtk7@pitt.edu

ABSTRACT

Background: The increasing use of electronic health records (EHRs) in clinical practice offers the potential to investigate cardiovascular outcomes over time in patients with type 2 diabetes (T2D).

Objective: To develop a methodology for identifying prevalent and incident cardiovascular disease (CVD) in patients with T2D who are candidates for therapeutic intensification of glucose-lowering therapy.

Methods: Patients with glycated hemoglobin (HbA1c) $\geq 7\%$ (53 mmol/mol) while receiving 1–2 oral diabetes medications (ODMs) were identified from an EHR (2005–2011) and grouped according to intensification with insulin (INS) (n=372), a different class of ODM (n=833), a glucagon-like peptide receptor 1 agonist (GLP-1RA) (n=59), or no additional therapy (NAT) (n=2017). Baseline prevalence of CVD was defined by documented International Classification of Diseases Ninth Edition (ICD-9) codes for coronary artery disease, cerebrovascular disease, or other CVD with first HbA1c $\geq 7\%$ (53 mmol/mol). Incident CVD was defined as a new ICD-9 code different from existing codes over 4 years of follow-up. ICD-9 codes were validated by a chart review in a subset of patients.

Results: Sensitivity of ICD-9 codes for CVD ranged from 0.83 to 0.89 and specificity from 0.90 to 0.96. Baseline prevalent (INS vs ODM vs GLP-1RA vs NAT: 65% vs 39% vs 54% vs 59%, $p < 0.001$) and incident CVD (Kaplan-Meier estimates: 58%, 31%, 52%, and 54%, $p = 0.002$) were greater in INS group after controlling for differences in baseline HbA1c ($9.2 \pm 2.0\%$ vs $8.3 \pm 1.2\%$ vs $8.2 \pm 1.3\%$ vs $7.7 \pm 1.1\%$ (77 vs 67 vs 66 vs 61 mmol/mol), $p < 0.001$) and creatinine (1.15 ± 0.96 vs 1.10 ± 0.36 vs 1.01 ± 0.35 vs 1.07 ± 0.45 mg/dL, $p = 0.001$).

Conclusions: An EHR can be an effective method for identifying prevalent and incident CVD in patients with T2D.

INTRODUCTION

Recommendations for intensification of glucose-lowering therapies for people with type 2 diabetes (T2D) have evolved over

Key messages

- An electronic health record (EHR) system can be an effective tool for identifying prevalence and incidence of cardiovascular events in patient populations with type 2 diabetes.
- EHR data can provide information relevant to favorable or unfavorable long-term outcomes related to specific glucose-lowering therapies that can enhance information obtained from randomized controlled clinical trials.
- Similar to what has been observed in earlier studies, patients who receive intensification of glucose-lowering therapy with insulin were found to have poor glycemic control at time of intensification and a high prevalence of cardiovascular disease.

recent years from more of a proscriptive approach to one that is individualized and patient oriented.^{1–5} The American Diabetes Association recommends metformin as the drug of choice for initial pharmacological therapy in patients not meeting glycemic goals with lifestyle interventions alone with T2D.⁵ However, the majority of patients with T2D will not achieve and maintain glycemic goals with any single drug therapy. There are multiple studies demonstrating the effect of different combinations of pharmacological agents on glycemic control, but there is little available data demonstrating superiority of one drug combination over another on long-term outcomes.

The majority of clinical trials investigating pharmacological agents for achievement of glycemic control in T2D-specified changes in risk for cardiovascular disease (CVD) as the primary measure of clinical outcomes.^{6–12} In 2008, the Food and Drug Administration (FDA) issued an updated Guidance for Industry requiring that all new antidiabetic drugs rule out excess cardiovascular risk

prior to seeking approval for clinical use.¹³ CVD end points and mortality are also used as a critical factor in ongoing surveillance of existing glucose-lowering therapies.^{12–15}

Results from large studies prespecified glycemic goals demonstrated no reductions in CVD events.^{7–9 16 17} Until recently, similar negative findings have been demonstrated in studies investigating CVD outcomes according to use of specific glucose lowering medications, including gliclazide, or the dipeptidyl peptidase IV inhibitors (DPP IV-I) (sitagliptin, saxagliptin, or alogliptin).^{8 10–12 17 18} In fact, the DPP-IV-I, saxagliptin, was associated with an increase in risk of hospitalization for congestive heart failure (CHF) and hypoglycemia.¹¹ Whether this was due to the study medication or an epiphenomenon of the study design is not clear. The sodium-glucose cotransporter 2 inhibitor, empagliflozin, was recently reported to reduce the number of hospitalizations for CHF and all cause and cardiovascular mortality.¹⁷ There were no significant reductions in risk for myocardial infarction or stroke. To date, empagliflozin is the only agent in this class that has demonstrated reductions in CVD. However, more data regarding the long-term safety and efficacy of this group of agents are needed.

Randomized controlled clinical trials (RCCTs), long considered the gold standard for evaluating the safety and efficacy of new therapies, require considerable resources to prospectively study the long-term effects of any diabetes medication on CVD or other outcomes.^{3 13 19} The electronic health record (EHR) offers an alternative or supplemental approach to the RCCTs for detecting signals for CVD risk and other adverse events in large patient populations that may be representative of patient populations with T2D who will be taking a medication on a chronic basis.^{20–24}

The primary aim of this study was to examine the ability of an EHR to accurately identify pre-existing and incident CVD events using the ICD-9 codes in a cohort of patients with T2D previously identified in another study investigating the ability of an EHR to identify patterns of therapeutic intensification of glucose-lowering therapies in patients with T2D.²⁵

METHODS

This study was approved by the Institutional Review Board at the University of Pittsburgh. The University of Pittsburgh Medical Center (UPMC) EHR data repository includes administrative and clinical data forwarded from the health system's clinical, administrative, and financial databases.^{26 27} There are currently more than 20 academic, community, and specialty hospitals; more than 500 physician offices; and over 3600 physicians in the UPMC Health System. The EMR includes patient demographics, office visits, medication lists, laboratory results, and charges from inpatient and outpatient settings throughout the health system

(EpicCare; Epic Systems Corp., Verona, Wisconsin, USA; PowerChart; Cerner Corporation, Kansas City, Missouri, USA). An interface (dbMotion, Pittsburgh, Pennsylvania, USA) connects and shares key information between systems.

The criteria used to identify patients as having T2D in this study was previously validated, with a positive predictive value (PPV) of 96% and a sensitivity of 96%.²⁶ Data extraction methods for this study were previously described.²⁵ Briefly, ambulatory de-identified EHR information from a large institutional data repository was searched to identify any patient visit that listed an oral diabetes medication (ODM) as an active therapy between June 2005 and November 2011. Patients with glycated hemoglobin (HbA1c) $\geq 7\%$ (53 mmol/mol) (index HbA1c value) who had existing prescriptions for one or two ODM, documentation of at least one follow-up visit after the index HbA1c, and available ICD-9 codes (n=3331) were included in this study (see online supplementary appendix A). ICD-9 codes were used to identify the presence of CVD according to one of three distinct categories: coronary artery disease (CAD) (ICD-9 410.xx, 411.xx, 412.00, 413.x, 414.x, and 414.xx); cerebrovascular disease (CBVD) (431, 433.xx, 434.xx, 435.x, 342.xx, 437.x, and 438.xx); and other CVD (402.xx, 416.x, 424.x, 425.x, 427.x and 427.xx, 428.x and 428.xx, 429.x, 440.x and 440.xx, 443.9 and 443.81, 707.xx, 785.4, and V49.6 and V49.7) (table 1). Other CVD referred to CVD outcomes that were not captured as CAD or CBVD.

Prevalent CVD was defined by the presence of an ICD-9 code at time of the index HbA1c value. Incident CVD was defined as a new ICD-9 code that appeared following the index date and that differed from any existing codes in patients with baseline evidence of CVD. For patients without baseline evidence of CVD, incident events were described by time of appearance in the EHR following the index date. Prevalent and incident CVD events were examined separately for all patients with or without baseline evidence of a CVD event, and according to therapeutic intensification with any insulin (INS) therapy, a glucagon-like peptide-1 receptor agent

Table 1 ICD-9 codes used to identify prevalent and incident CVD events

Complication	ICD-9 code(s)
Coronary artery disease	410.xx, 411.xx, 412, 413.xx, and 414.xx
Cerebrovascular disease	431, 433.xx, 434.xx, 435.xx, 342.xx, 437.xx, and 438.xx
Other cardiovascular disease	402.xx, 416.xx, 424.xx, 425.xx, 427.xx, 428.xx, 429.xx, 440.xx, 443.9x, 443.81, 707.xx, 785.4x, V49.6, and V49.7

ICD-9, International Classification of Diseases Ninth Edition; CVD, cardiovascular disease.

(GLP-1RA) (exenatide or liraglutide), a new class of ODM or no additional therapy (NAT).²⁵

Accuracy of ICD-9 coding for determination of CVD events was investigated by conducting a chart review on all participants receiving intensification with GLP-1RA therapies (n=59) and a subset of patients selected randomly from each of the other groups (n=205) (total 264 participants, 8% of included population). The chart review was performed by two endocrinologists (EKF and MTK) with extensive experience in diabetes care and use of an EHR, and a project coordinator (JK). The chart review process was initiated by a review of the office note or diagnostic study correlating with the date an ICD-9 code appeared in the EHR.

An ICD-9 code was defined as being accurate when there was chart documentation of the complication (true positive). An ICD-9 code was defined as being inaccurate in the absence of chart validation of an ICD-9 code (false positive). A false negative was defined as evidence of a complication by the chart review without a recorded ICD-9 code and a true negative as the absence of ICD-9 code or chart evidence of a complication. Sensitivity of this method was defined as the probability of concordance between ICD-9 codes and chart review and specificity as the probability of not having an ICD-9 code when a complication was not documented in the patient record.

Statistics

The baseline characteristics of patient population are presented as means and SDs for continuous variables and as percentages for categorical variables. Time-to-event analyses were undertaken using the index date (ie, intensification or the first recorded HbA1c value $\geq 7\%$ (53 mmol/mol)) as time zero, and time was

measured from the index date. Kaplan-Meier estimates and log rank statistics were used to compare the risk of cardiovascular events over time. Hazard ratios (HRs) and 95% CIs are reported. For the validation analyses, sensitivity, specificity and positive predicted values were computed and reported for each of the events. Following confirmation of the approximate normality of the continuous variables, analysis of variance statistics were used to compare the mean values among the three intensification groups and among the four groups including the control group. Categorical variables were compared using χ^2 statistics. Unadjusted and multivariable-adjusted (age, sex, race, body mass index (BMI), HbA1c, creatinine, and baseline CVD) Cox proportional hazard regression models were used to estimate the association between the four groups and risk of cardiovascular events.

RESULTS

The baseline clinical characteristics of the 3331 patients meeting inclusion criteria grouped according to intensification strategy are presented in table 2. The majority (58%, n=1937) of patients had baseline evidence of CVD using ICD-9 criteria.

The chart review revealed that ICD-9 codes were highly sensitive and specific for each CVD complication (table 3). The positive predictive value of an ICD-9 code ranged from 0.77 for CBVD to 0.89 for other CVD. The diagnoses most frequently represented in the other CVD category were hypertensive heart disease (ICD-9 402 group) (28%), cardiac dysrhythmias (ICD-9 427 group) (18%), heart failure (ICD-9 428 group) (17%), and other peripheral vascular disease (ICD-9 443 group) (12%). No group differences were observed in the incidence of CAD (0.22 vs 0.10 vs 0.24 vs 0.19, p=0.36).

Table 2 Baseline clinical characteristics and prevalence CVD according to intensification strategy

	Groups with DM therapy intensified			p value	Control	p value
	Insulin	GLP-1RA	+1 ODM			
N	n=372	n=59	n=883		n=2017	
Age (years)	60.8±14.2	56.9±11.7	62.8±12.8	0.0006	67.1±13.2	<0.0001
Percentage of African-American	24.7	8.6	20.5	0.0147	22.6	0.03
Percentage of female	54.1	62.1	52.5	0.35	55.4	0.33
BMI (kg/m ²)	33.0±7.2	36.8±6.6	33.6±7.1	0.0011	32.5±7.2	<0.0001
HbA1c (%)	9.2±1.9	8.33±1.2	8.2±1.3	<0.0001	7.6±1.1	<0.0001
HbA1c (mmol/mol)	77	67	66		61	
Creatinine (mg/dL)	1.15±0.96	1.01±0.36	1.01±0.36	0.0008	1.07±0.45	0.0001
Prevalence of CVD at baseline						
Related to CAD*	48.9	30.5	38.4	0.0006	42.0	0.002
Related to CBVD*	16.9	3.4	12.1	0.0054	15.7	0.003
Related to other CVD*	54.3	28.8	38.3	<0.0001	45.7	<0.0001
Related to any CVD*	65.3	39.0	54.1	<0.0001	59.1	<0.0001

Cases refers to number of participants in each group with available data for each specified characteristic. Data are shown as mean ±STD unless otherwise indicated.

*Presented as % of participants.

BMI, body mass index; CAD, coronary artery disease; CBVD, cerebrovascular disease; CVD, cardiovascular disease; GLP-1RA, glucagon-like peptide receptor 1 agonist; HbA1c, glycated hemoglobin; ODM, oral diabetes medications.

Table 3 Sensitivity and specificity of ICD-9 codes for categories of CVD

Complication	Sensitivity	Specificity	PPV
Other CVD	0.89	0.94	0.89
CAD	0.87	0.90	0.81
CBVD	0.83	0.96	0.77

CAD, coronary artery disease; CBVD, cerebrovascular disease; CVD, cardiovascular disease; ICD-9, International Classification of Diseases Ninth Edition; PPV, positive predictive value.

The observed baseline prevalence of CVD was highest prevalence in the INS group (n=372) and lowest in the GLP group (table 2). These differences among treatment groups were observed for CAD, CBVD, and other CVD. Patients intensified with INS had higher HbA1c and serum creatinine and more representation of African-American patients (table 2). Patients intensified with GLP-1RA (n=59) were younger and more obese than the other groups. The majority of patients (n=2017) did not receive any additional diabetes therapy during the time period of the study (NAT group). This group was older and leaner with a lower HbA1c than any of the intensified groups.

The cumulative probability of incident CVD also varied among intensification groups, with the highest incidence again observed in the INS group event over the 4-year period of follow-up (INS vs GLP-1RA vs ODM vs NAT: 0.58 vs 0.31 vs 0.52 vs 0.54, p=0.002) (figure 1). The other CVD accounted for the major portion of these differences (0.47 vs 0.21 vs 0.38 vs 0.40, p=0.008), with a smaller contribution for incident CBVD (0.21 vs 0.03 vs 0.15 vs 0.17, p=0.09).

Incident CVD was further examined according to the presence (n=1937) or absence (n=1394) of prevalent CVD at baseline. The cumulative probability of incident

CVD over years 1–4 of follow-up in patients with baseline evidence of CVD was higher (0.30, 0.45, 0.59 and 0.68, respectively) than what was observed among patients without baseline evidence of CVD (n=1394) (0.09, 0.16, 0.22, and 0.30, respectively). Among patients with prevalent CVD at time of HbA1c $\geq 7\%$ (53 mmol/mol), there were no differences for any category of incident CVD over 4 years according to the treatment group. Among patients without prevalent CVD at baseline, the cumulative probability of incident CVD was highest in the INS group only for the other CVD category (0.42 vs 0.00 vs 0.28, vs 0.26, p=0.02). Of note, there were no incident other CVD events in the GLP-1RA group.

Cox regression models were used to investigate the association between diabetes intensification therapy and incident CVD in relation to the NAT group (table 4). The unadjusted HR for any incident CVD event in the entire cohort of 3331 patients was lowest among those receiving intensification with GLP-1 RA (HR=0.44 (CI 0.24 to 0.82), p=0.01). This remained significant after adjusting for baseline differences in age, sex, race, BMI, HbA1c, creatinine, and baseline CVD (HR=0.53 (CI 0.280 to 0.994), p=0.048). When incident CVD was investigated according to those with and without prevalent CVD at baseline, no differences were observed among the groups for unadjusted and adjusted HR.

DISCUSSION

The primary purpose of this investigation was to investigate the ability of an EHR to accurately identify CVD events in a group of patients with T2D. This study was performed using data from an earlier study investigating prescribing patterns for patients with T2D and HbA1c values $\geq 7.0\%$ (53 mmol/mol) while receiving treatment with one or two ODM.²⁵ The results for prevalent and incident CVD events are reported according to treatment strategy employed among patients having available follow-up data from this earlier report. The results of this study are consistent with prior studies demonstrating a high prevalence and incidence of CVD in a patient population with T2D (table 2, figure 1).^{7 28 29} As anticipated, the incidence of CVD was higher among patients with baseline evidence of CVD, which was attributed predominantly to 'other CVD' (ie, PVD and CHF).³⁰

The results demonstrating the cumulative probability of CVD events in this study are consistent with what was reported in the CALIBER study, which included over 34 000 individuals with T2D.²⁸ The cumulative incidence of CVD was 58% in women and 67% in men over the 5 years of data collection in CALIBER, with PVD and CHF identified as the major contributors.²⁸

While the current study was not designed as a comparison of CVD outcomes according to intensification strategy, the observation that the INS group had more prevalent and incident CVD than other groups is also consistent with what has been observed in previous studies.^{10 11} The higher numbers in the INS group are

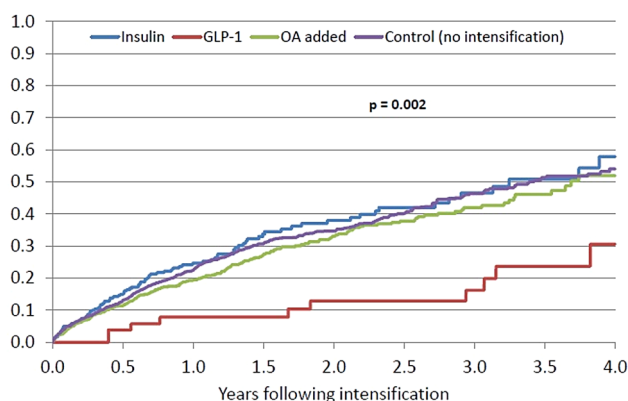


Figure 1 Kaplan-Meier plot of incident CVD according to the treatment group over a 4-year period following intensification of diabetes therapy. GLP-1 refers to the patient group intensified with glucagon-like peptide receptor 1 agonists; OA refers to the patient group intensified with an additional oral diabetes medication; and control refers to the group receiving no additional therapy at the time of HbA1c $\geq 7\%$ (53 mmol/mol). CVD, cardiovascular disease; GLP-1, glucagon-like peptide; HbA1c, glycated hemoglobin.

Table 4 Associations between therapeutic intensification therapy and incident cardiovascular disease in relation to the group receiving no additional therapy

	Type of DM therapy	Risk for occurrence of any CVD					
		Unadjusted			Adjusted		
		RR	95% CI	p Value	RR	95% CO	p Value
Patients with and without baseline CVD N=3331	Insulin	1.06	0.86 to 1.32	0.56	1.24	0.98 to 1.56	0.08
	GLP-1RA	0.44	0.24 to 0.82	0.01	0.53	0.28 to 0.99	0.048
	ODM	0.97	0.83 to 1.14	0.73	1.08	0.92 to 1.28	0.34
Patients without baseline CVD N=1394	Insulin	1.06	0.63 to 1.76	0.84	1.38	0.79 to 2.39	0.26
	GLP-1RA	0.25	0.06 to 1.03	0.055	0.30	0.07 to 1.24	0.096
	ODM	1.01	0.72 to 1.41	0.94	1.20	0.84 to 1.71	0.32
Patient with baseline CVD N=1937	Insulin	1.06	0.84 to 1.34	0.63	1.18	0.91 to 1.53	0.21
	GLP-1RA	0.53	0.26 to 1.07	0.08	0.64	0.31 to 1.30	0.21
	ODM	0.96	0.80 to 1.14	0.63	1.06	0.88 to 1.17	0.56

CVD, cardiovascular disease; DM, diabetes mellitus; GLP-1RA, glucagon like peptide-1 receptor agonist; ODM, oral diabetes medications.

likely a reflection of higher baseline comorbidity rather than attribution to INS therapy itself (table 2).³¹ In subgroup analyses from earlier studies using DPP-IV inhibitors, INS-treated participants with a longer duration of T2D were at higher risk for CVD events (HR 1.23 (CI 0.95 to 1.59)).^{10 11} Similar to what was observed in the INS group in this study, individuals with renal impairment were also at higher risk for these events.¹⁰

The potentially favorable CVD profile observed in the small number of participants in the GLP-1RA group needs to be interpreted cautiously owing to the very low number of participants in this group. While agents in this class have been described as having potential cardio-protective effects, there is currently no evidence from RCCTs in humans to allow conclusions to be drawn regarding their cardiovascular safety or efficacy.^{32 33} The small numbers of participants receiving intensification of therapy with GLP-1RA is of some interest in that this class was considered to be second or third tier therapy at the time of data collection in this study.¹² These results differ from several earlier EHR investigations demonstrating intensification with GLP-1RA in approximately 7% of patients.³⁴ The reasons for the infrequent use of these agents (3.6% of those receiving therapeutic intensification) are not known, but it is possible that this class of agents are being prescribed to participants who were not candidates for inclusion in this study, including those with HbA1c <7% (53 mmol/mol), who may be treated with >2 ODM, or who may already be receiving INS therapy.²⁵

There are several limitations to this study, with the inability to obtain information from the EHR regarding duration of diabetes being one of the most important limitations.²⁵ Prevalent and incident CVD can be related to diabetes duration and may have affected the observed differences among intensified groups. However, the risk for CVD events has been demonstrated to be present at the time T2D is diagnosed, indicating that risk factors are present well before the onset of overt hyperglycemia.^{35 36} Another limitation is that associated with the use of an EHR for documentation of CVD. Data

obtained from an EHR have been demonstrated as being incomplete and prone to error.³⁷ Not all study variables were available for each patient at each time point, as has been observed in other studies using EHRs to report clinical outcomes data.^{34 38} Another limitation of this study is that we do not have estimates of the numbers of patients in the database who sought care in an outside hospital system, which could lead to either under- or overestimates of CVD prevalence and incidence. The very small number of participants meeting criteria for this study who were prescribed GLP-1RA created disproportionate comparisons with the other groups. Finally, the use of ICD-9 codes has now been replaced by ICD-10 codes, which will require additional validation.³⁹

In summary, we report that an EHR has the potential to provide important information regarding the prevalent and incident CVD in a described population of patients with T2D. These observations suggest that data mining with an EHR has the ability to compliment, support or enhance information obtained from prospective randomized clinical trials.

Author affiliations

¹Division of Endocrinology, University of Pittsburgh, Pittsburgh, Pennsylvania, USA

²Department of Medicine, NYU Langone Trinity Center, New York, New York, USA

³University of Pittsburgh, Graduate School of Public Health, Pittsburgh, Pennsylvania, USA

⁴Department of Health Information Management, University of Pittsburgh, Pittsburgh, Pennsylvania, USA

⁵University of Pittsburgh Medical Center (UPMC), Pittsburgh, Pennsylvania, USA

⁶Department of Epidemiology, University of Pittsburgh, Graduate School of Public Health, Pittsburgh, Pennsylvania, USA

⁷Lehigh Valley Health Network, Diabetes and Endocrinology, Lehigh Valley, Pennsylvania, USA

⁸Division of Endocrinology and Metabolism, University of Pittsburgh, Pittsburgh, Pennsylvania, USA

Acknowledgements The authors thank those who provided excellent guidance and assistance in data retrieval, management, and analytics for this study. This includes Melissa Saul at University of Pittsburgh and Leslie Kudra

and Robert Kudray, Center for Assistance in Research using eRecord (CARE) at UPMC.

Contributors MTK, TO, MB, and LS had significant input toward the design and execution of the study. ML held primary responsibility for data management and statistical analyses. EKf, VM, and JK contributed to data collection and medical record reviews. DD provided expertise for certain aspects of the study. MTK, TO, MB, LS, and ML all contributed to interpretation of results. MTK prepared the manuscript draft with input and contributions from other authors.

Funding Funding for this study was provided by Sanofi-Aventis. The funder of this study had no role in the conduct of the study, data collection, analysis, or interpretation of data or in the writing of this report.

Competing interests None declared.

Ethics approval University of Pittsburgh IRB.

Provenance and peer review Not commissioned; externally peer reviewed.

Data sharing statement No additional data are available.

Open Access This is an Open Access article distributed in accordance with the Creative Commons Attribution Non Commercial (CC BY-NC 4.0) license, which permits others to distribute, remix, adapt, build upon this work non-commercially, and license their derivative works on different terms, provided the original work is properly cited and the use is non-commercial. See: <http://creativecommons.org/licenses/by-nc/4.0/>

REFERENCES

- Nathan DM, Buse JB, Davidson MB, *et al.* Medical management of hyperglycaemia in type 2 diabetes mellitus: a consensus algorithm for the initiation and adjustment of therapy: a consensus statement from the American Diabetes Association and the European Association for the Study of Diabetes. *Diabetes Care* 2009;32:193–203.
- Nathan DM, Buse JB, Davidson MB, *et al.* Management of hyperglycemia in type 2 diabetes: a consensus algorithm for the initiation and adjustment of therapy: a consensus statement from the American Diabetes Association and the European Association for the Study of Diabetes. *Diabetes Care* 2006;29:1963–72.
- Inzucchi SE, Bergenstal RM, Buse JB, *et al.* Management of hyperglycemia in type 2 diabetes, 2015: a patient-centered approach: update to a position statement of the American Diabetes Association and the European Association for the Study of Diabetes. *Diabetes Care* 2015;38:140–9.
- Garber AJ, Abrahamson MJ, Barzilay JI, *et al.* Consensus statement by the American Association of Clinical Endocrinologists And American College of Endocrinology on the comprehensive type 2 diabetes management algorithm—2016 executive summary. *Endocr Pract* 2016;22:84–113.
- American Diabetes Association. 7. Approaches to glycemic treatment. *Diabetes Care* 2016;39:S52–9.
- Cushman WC, Evans GW, Byington RP, *et al.*, Accord Study Group. Effects of intensive blood-pressure control in type 2 diabetes mellitus. *N Engl J Med* 2010;362:1575–85.
- Gerstein HC, Miller ME, Genuth S, *et al.*, ACCORD Study Group. Long-term effects of intensive glucose lowering on cardiovascular outcomes. *N Engl J Med* 2011;364:818–28.
- Patel A, MacMahon S, Chalmers J, *et al.*, ADVANCE Collaborative Group. Intensive blood glucose control and vascular outcomes in patients with type 2 diabetes. *N Engl J Med* 2008;358:2560–72.
- Duckworth W, Abraira C, Moritz T, *et al.* Glucose control and vascular complications in veterans with type 2 diabetes. *N Engl J Med* 2009;360:129–39.
- White WB, Cannon CP, Heller SR, *et al.* Alogliptin after acute coronary syndrome in patients with type 2 diabetes. *N Engl J Med* 2013;369:1327–35.
- Scirica BM, Bhatt DL, Braunwald E, *et al.* Saxagliptin and cardiovascular outcomes in patients with type 2 diabetes mellitus. *N Engl J Med* 2013;369:1317–26.
- Green JB, Bethel MA, Armstrong PW, *et al.* Effect of sitagliptin on cardiovascular outcomes in type 2 diabetes. *N Engl J Med* 2015;373:232–42.
- Hiatt WR, Kaul S, Smith RJ. The cardiovascular safety of diabetes drugs—insights from the rosiglitazone experience. *N Engl J Med* 2013;369:1285–7.
- Schmidt TA, Rosen CJ, Yudkin JS. European Medicines Agency must take account of cardiovascular harm associated with degludec insulin. *BMJ* 2013;346:f3731.
- Nissen SE, Wolski K. Effect of rosiglitazone on the risk of myocardial infarction and death from cardiovascular causes. *N Engl J Med* 2007;356:2457–71.
- Berlin I, Sachon CI, Grimaldi A. Identification of factors associated with impaired hypoglycaemia awareness in patients with type 1 and type 2 diabetes mellitus. *Diabetes Metab* 2005;31(Pt 1):246–51.
- Zinman B, Wanner C, Lachin JM, *et al.*, EMPA-REG OUTCOME Investigators. Empagliflozin, cardiovascular outcomes, and mortality in type 2 diabetes. *N Engl J Med* 2015;373:2117–28.
- Eurich DT, Simpson S, Senthilselvan A, *et al.* Comparative safety and effectiveness of sitagliptin in patients with type 2 diabetes: retrospective population based cohort study. *BMJ* 2013;346:f2267.
- Joshi PH, Kalyani RR, Blumenthal RS, *et al.* Cardiovascular effects of noninsulin, glucose-lowering agents: need for more outcomes data. *Am J Cardiol* 2012;110(9 Suppl):32B–42B.
- Prokosch HU, Ganslandt T. Perspectives for medical informatics. Reusing the electronic medical record for clinical research. *Methods Inf Med* 2009;48:38–44.
- Prokosch HU, Ries M, Beyer A, *et al.* IT infrastructure components to support clinical care and translational research projects in a comprehensive cancer center. *Stud Health Technol Inform* 2011;169:892–6.
- Garg R, Hurwitz S, Turchin A, *et al.* Hypoglycemia, with or without insulin therapy, is associated with increased mortality among hospitalized patients. *Diabetes Care* 2013;36:1107–10.
- Turchin A, Kohane IS, Pendergrass ML. Identification of patients with diabetes from the text of physician notes in the electronic medical record. *Diabetes Care* 2005;28:1794–5.
- Turchin A, Matheny ME, Shubina M, *et al.* Hypoglycemia and clinical outcomes in patients with diabetes hospitalized in the general ward. *Diabetes Care* 2009;32:1153–7.
- Korytkowski MT, Brooks M, Lombardero M, *et al.* Use of an electronic medical record (EMR) to identify glycemic intensification strategies in type 2 diabetes. *J Diabetes Sci Technol* 2015;9:593–601.
- Zgibor JC, Orchard TJ, Saul M, *et al.* D. Developing and validating a diabetes database in a large health system. *Diabetes Res Clin Pract* 2007;75:313–19.
- Siminerio L, Piatt G, Zgibor JC, *et al.* Implementing the chronic care model for improvements in diabetes care and education in a rural primary practice. *Diabetes Educator* 2005;32:225–34.
- Shah AD, Langenberg C, Rapsomaniki E, *et al.* Type 2 diabetes and incidence of cardiovascular diseases: a cohort study in 1.09 million people. *Lancet Diabetes Endocrinol* 2015;3:105–13.
- Frye RL, August P, Brooks MM, *et al.*, Bari 2D Study Group. A randomized trial of therapies for type 2 diabetes and coronary artery disease. *N Engl J Med* 2009;360:2503–15.
- Haffner SM, Lehto S, Ronnemaa T, *et al.* Mortality from coronary heart disease in subjects with type 2 diabetes and in nondiabetic subjects with and without prior myocardial infarction. *N Engl J Med* 1998;339:229–34.
- Gerstein HC, Bosch J, Dagenais GR, *et al.*, Origin Trial Investigators. Basal insulin and cardiovascular and other outcomes in dysglycemia. *N Engl J Med* 2012;367:319–28.
- Drucker DJ. Incretin action in the pancreas: potential promise, possible perils, and pathological pitfalls. *Diabetes* 2013;62:3316–23.
- Okerson T, Chilton RJ. The cardiovascular effects of GLP-1 receptor agonists. *Cardiovasc Ther* 2012;30:e146–55.
- Horton ES, Silberman C, Davis KL, *et al.* Weight loss, glycemic control, and changes in cardiovascular biomarkers in patients with type 2 diabetes receiving incretin therapies or insulin in a large cohort database. *Diabetes Care* 2010;33:1759–65.
- Erkens JA, Herings RM, Stolk RP, *et al.* Cardiovascular risk factors and diseases precede oral hypoglycaemic therapy in patients with type 2 diabetes mellitus. *J Clin Epidemiol* 2002;55:345–9.
- Hu FB, Stampfer MJ, Haffner SM, *et al.* Elevated risk of cardiovascular disease prior to clinical diagnosis of type 2 diabetes. *Diabetes Care* 2002;25:1129–34.
- Yasnoff WA, Sweeney L, Shortliffe EH. Putting health IT on the path to success. *JAMA* 2013;309:989–90.
- Pawaskar M, Li Q, Hoogwerf BJ, *et al.* Metabolic outcomes of matched patient populations initiating exenatide BID vs. insulin glargine in an ambulatory care setting. *Diabetes Obes Metab* 2012;14:626–33.
- Conn J. Information technology: meeting Stage 2 meaningful-use requirements...converting to ICD-10 coding. *Mod Healthc* 2014;44:18.