

Muhlenberg Medical Center: Hospital for the Chronically III

Lehigh Valley Health Network

Follow this and additional works at: <https://scholarlyworks.lvhn.org/historicalarchives>

Let us know how access to this document benefits you

Published In/Presented At

(2023). Muhlenberg Medical Center: Hospital for the Chronically III. *LVHN Scholarly Works*. Retrieved from <https://scholarlyworks.lvhn.org/historicalarchives/817>

This Newsletter is brought to you for free and open access by LVHN Scholarly Works. It has been accepted for inclusion in LVHN Scholarly Works by an authorized administrator. For more information, please contact LibraryServices@lvhn.org.



Scientific, too. Newest model x-ray installation on Special Services Floor



Alfred J. Kopp shares a favorite television program with Nurse Grace Fahringer



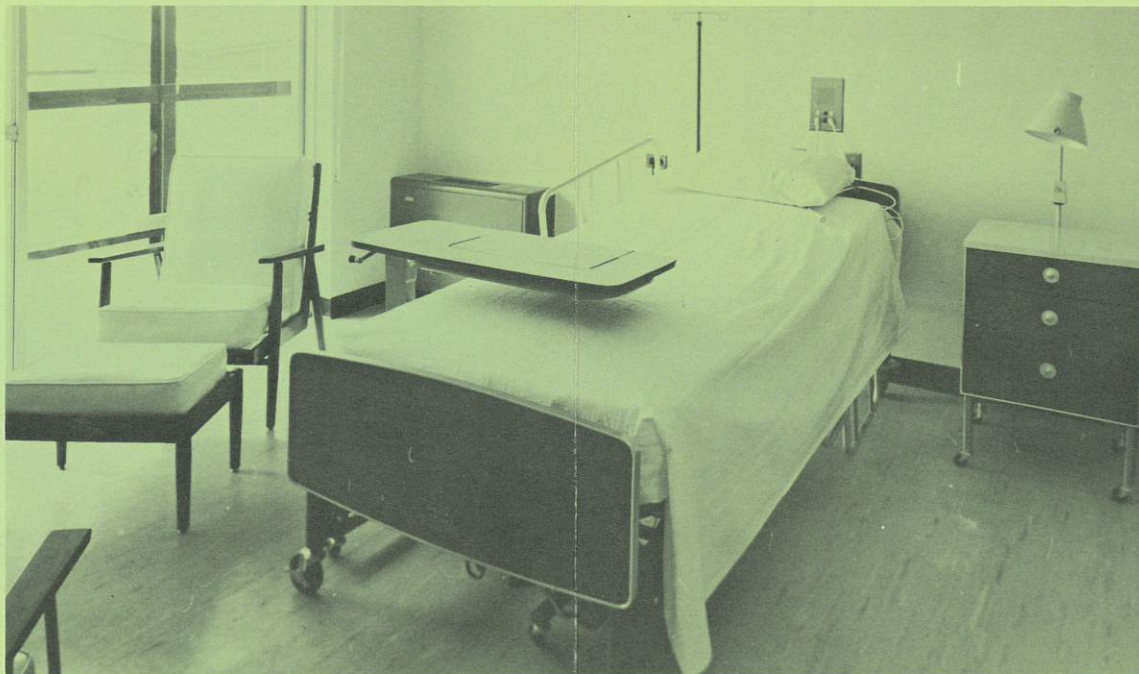
Mrs. Ella Wittman receives a refreshing drink from Nurse Nancy Rohrbach

Call or write for full information on hospital services available, admission policies and rates. Your physician has admission forms for your convenience.

Muhlenberg Medical Center
Schoenersville Road, Bethlehem, Pa.
Sister Louise Burroughs, Administrator
Ira F. Angstadt, Director of Development
UNiversity 5-0711

MUHLENBERG MEDICAL CENTER

Hospital For The Chronically Ill



Patients' rooms are spacious, well-lighted and tastefully fitted with comfortable beds and chairs and other furnishings to provide the best of patient care efficiently.



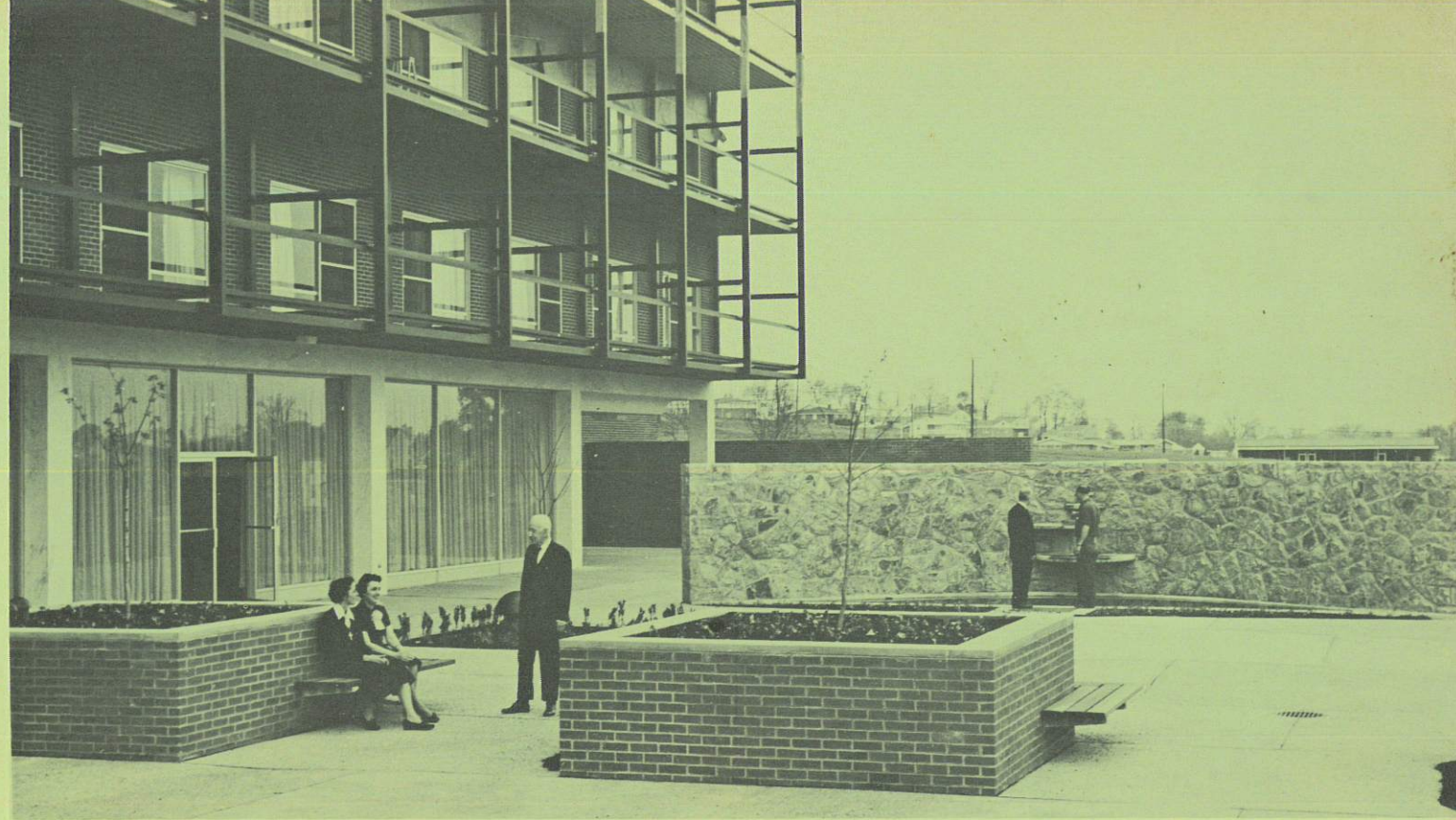
Mrs. Emma Herring is met at the door by Sister Esther Schenker, admissions officer, and Mary Jacoby, volunteer

NOW SERVING

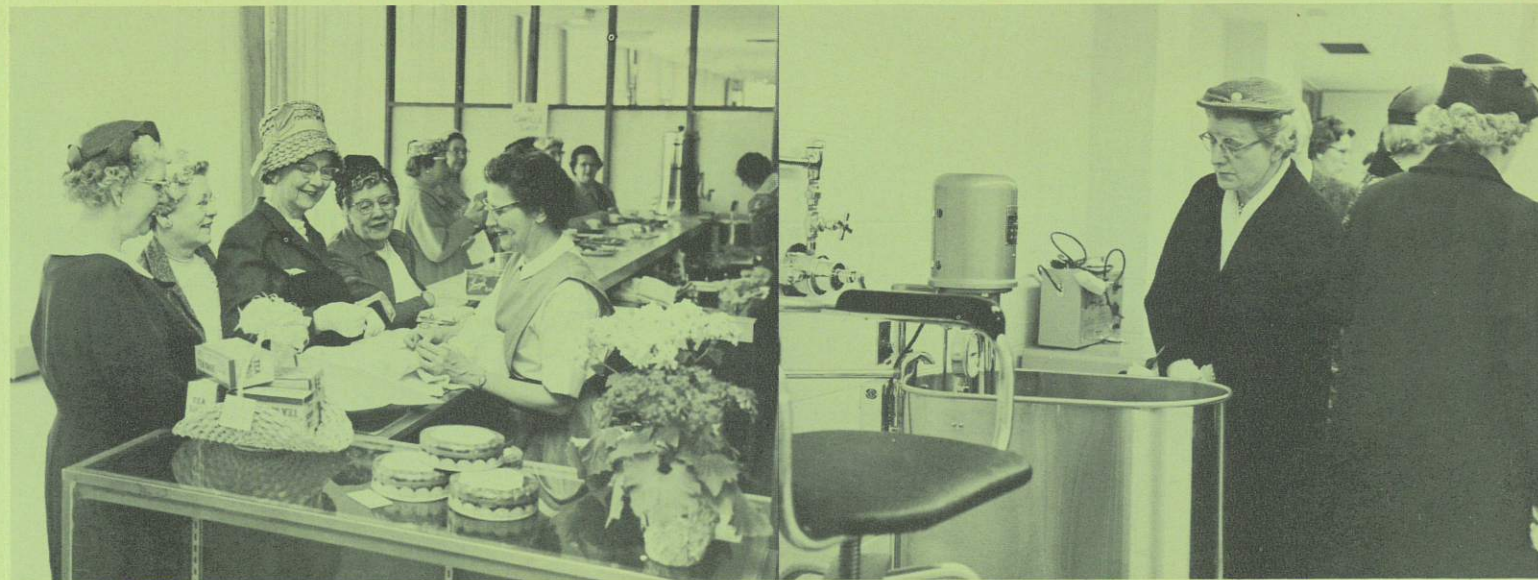
Muhlenberg Medical Center's Building for the Chronically Ill, the first hospital of its type in the Lehigh Valley, has opened its doors and is caring for patients. Additional competent staff persons are added as the patient population increases. Already, this handsome, 94-room medical facility is proving its efficiency through well-planned service layouts and the best in furnishings and equipment.

The Hospital for the Chronically Ill is caring for men and women regardless of faith, color or creed. Patients with a variety of chronic illnesses are receiving the best of personalized care, coupled with medication and therapy prescribed by staff physicians and special diets prepared in the Medical Center's outstanding Food Service Building.

Eligibility for admission is determined by medical need. Applicants must have chronic diseases and conditions and the written application must include the physician's diagnosis, prognosis and estimated length of stay. The hospital is designed particularly for the care of chronically-ill patients and all its facilities are complete and ultra-modern.



Visitors try out the pleasant terrace outside the first floor lounge and occupational therapy areas, available to patients and public alike. Visiting hours daily from 10 a.m. to 9 p.m.



Gift Shop of Auxiliary of Muhlenberg Medical Center is a popular spot

Deep study of hydro therapy tank installation in Physical Therapy