

## Allentown School of Nursing Yearbook, 1949

Lehigh Valley Health Network

Follow this and additional works at: <https://scholarlyworks.lvhn.org/historicalarchives>

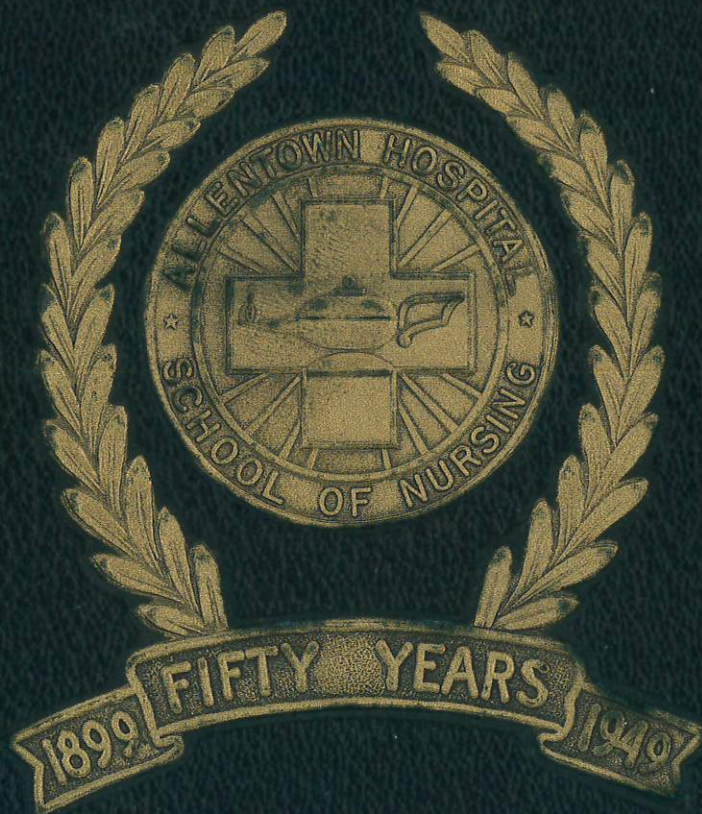
**Let us know how access to this document benefits you**

---

### Published In/Presented At

(1949). Allentown School of Nursing Yearbook, 1949. *LVHN Scholarly Works*. Retrieved from <https://scholarlyworks.lvhn.org/historicalarchives/891>

This Book is brought to you for free and open access by LVHN Scholarly Works. It has been accepted for inclusion in LVHN Scholarly Works by an authorized administrator. For more information, please contact [LibraryServices@lvhn.org](mailto:LibraryServices@lvhn.org).



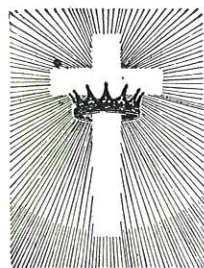
*The Servantes*

NINETEEN HUNDRED AND FORTY NINE

"In as much as ye have done it unto one of the least of these my brethren,  
ye have done it unto me." Matthew XXV . . . 40

"Oh may I join the choir invisible  
Of those immortal dead who live again  
In minds made better by their presence-live  
In pulses stirred to generosity,  
In deeds of daring rectitude, in scorn  
For miserable aims that end with self,  
In thoughts sublime that pierce the nightlike stars,  
And with their mild persistence urge men's search  
To vaster issues . . . May I reach  
That purest heaven, be to other souls  
The cup of strength in some great agony,  
Enkindle generous ardour, feed pure love,  
Beget the smiles that have no cruelty—  
Be the sweet presence of a good diffused,  
And in diffusion ever more intense.  
So shall I join the choir invisible,  
Whose music is the gladness of the world."

GEORGE ELIOT



# SERVANTES

PUBLISHED BY THE  
SENIOR CLASS

NINETEEN HUNDRED FORTY NINE

ALLENTOWN HOSPITAL  
SCHOOL OF NURSING  
ALLENTOWN • PENNSYLVANIA

# DEDICATION

SIGNALIZING THE  
GOLDEN ANNIVERSARY

1899 • 1949



TO THE

ALLENTOWN HOSPITAL

AND

ALLENTOWN HOSPITAL

SCHOOL OF NURSING

It is axiomatic that a progressive Hospital and a School of Nursing similarly paralleled in progression are intimately related and united by reciprocal obligations. Emanating power from the common bond existing between these two inseparables has enabled us to dedicate this, our **Servantes**, to their correlating Golden Anniversary.

To you, our most heart-felt gratitude and a fervent hope for a prodigious future of unsurmountable success.

## In Memoriam



HONORABLE FRED B. GERNERD  
(November 22, 1879—August 7, 1948)

With solemn regret, we mark the passing of the Honorable Fred B. Gerner, an outstanding figure in the administrative staff of the Allentown Hospital Association since 1924.

He was the ardent and progressive President of the Board of Trustees for the past twenty-two years. This period of service coincided with the era of largest expansion of the facilities of the Hospital. He freely dedicated valuable hours of an assiduous life in an effort to aid the advancement of the Hospital, its Staff, and its auxiliary organizations. Not only will he be noted for his zealous efforts in the Hospital, but also his outstanding influence in innumerable community affairs.

In our hearts we will always reserve a place in memory of one who so diligently devoted himself to a vital cause of humanity.

## CONTENTS



ADMINISTRATION and FACULTY



MEDICAL STAFF



SENIORS



FEATURES

# ADMINISTRATION AND FACULTY

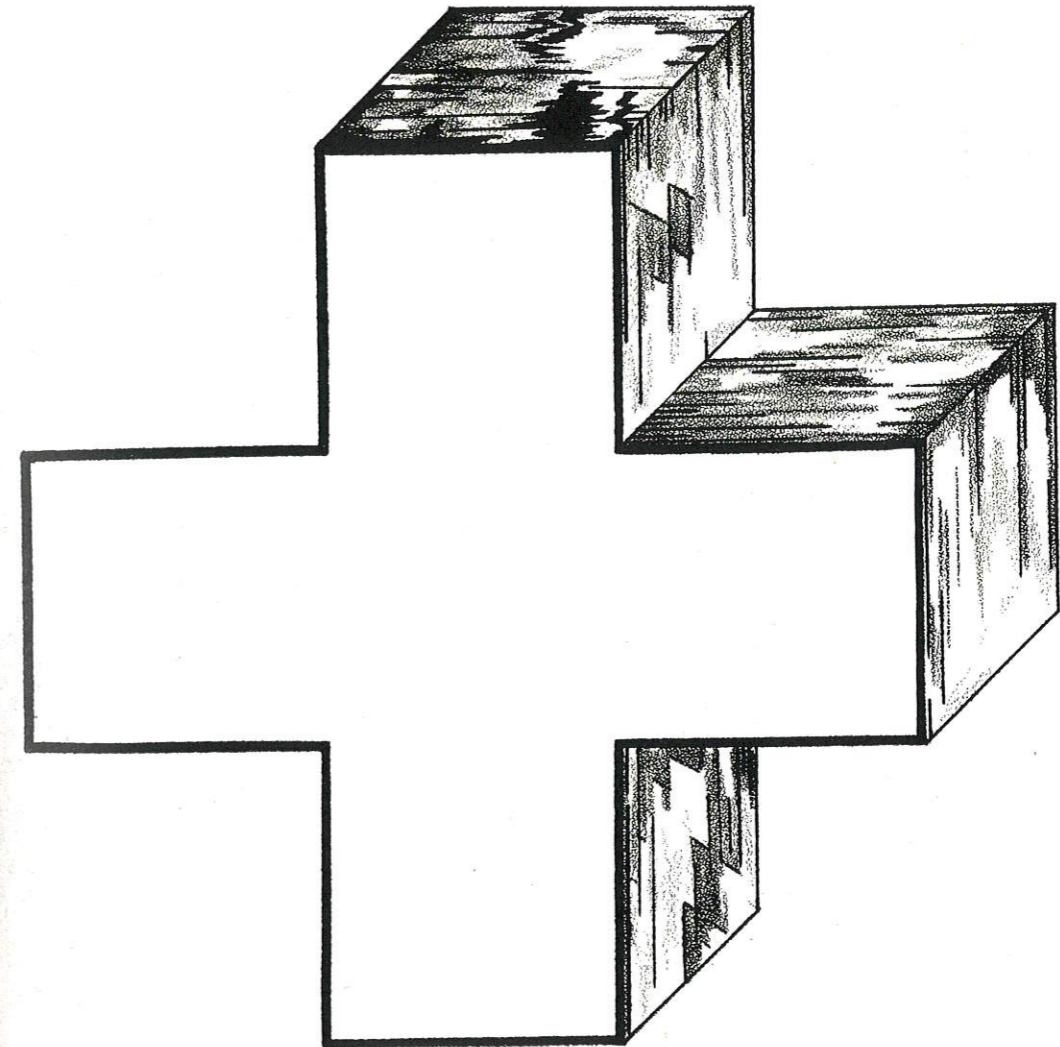
## ADMINISTRATIVE OFFICERS

THE ALLENTOWN HOSPITAL ASSOCIATION

AND

ALLENTOWN HOSPITAL SCHOOL OF NURSING

Reuben J. Butz	- - - - -	President, Board of Trustees
The Hon. Claude T. Reno	- - - - -	1st Vice President
Louis P. Neuweiler	- - - - -	2nd Vice President
Walter C. Lotte	- - - - -	Secretary
William N. Eberhard	- - - - -	Treasurer
Dr. Robert L. Schaeffer	- - - - -	Chief of Staff
George W. Sherer, A.B.	- - - - -	Superintendent of Hospital
Raymond T. Kern	- - - - -	Asst. Superintendent
Orlando M. Bowen, B.S.	- - - - -	Asst. Superintendent
Ethlyn L. Eichel, R.N., B.S., M.A.	- - - - -	Director of Nursing
Adele M. Miller, R.N., B.S., M.A.	- - - - -	Director of Nursing Education
Marie S. Miller, R.N.	- - - - -	Asst. Director of Nursing Service





REUBEN J. BUTZ, LL.D.  
President, Board of Trustees  
Chairman of Nursing School Committee



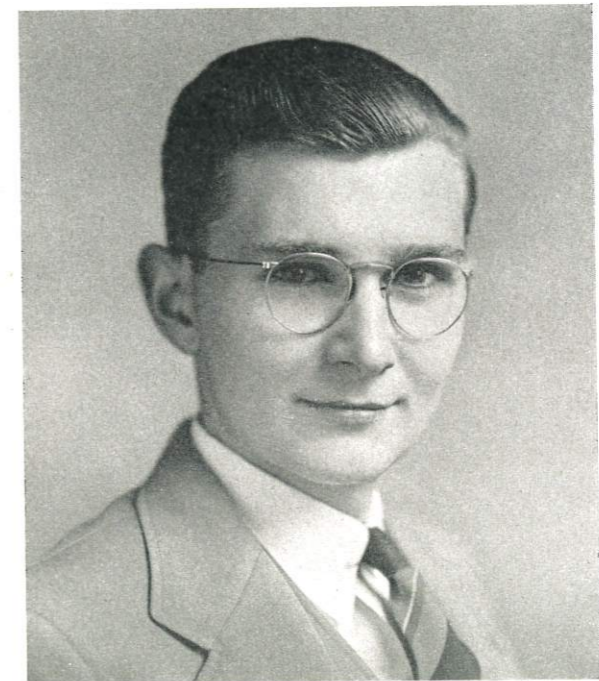
ROBERT L. SCHAEFFER, A.B., M.D., D.Sc., F.A.C.S.  
Chief of Staff  
Surgical Department Chief  
Instructor in Anatomy and Physiology



GEORGE W. SHERER, A.B.  
Superintendent of Hospital



RAYMOND T. KERN  
Assistant Superintendent of Hospital



ORLANDO M. BOWEN, B.S.  
Assistant Superintendent of Hospital





ADELE M. MILLER, R.N., B.S., M.A.  
Director of Nursing Education  
Science Instructor

*"There is nothing in this world you cannot do . . ."*



ETHLYN L. EICHEL, R.N., B.S., M.A.  
Director of Nursing  
Instructor in History of Nursing  
and  
Professional Adjustments II

In reminiscing, we shall think of you, Miss Eichel, not only as our Director but as a diligent counselor, an altruistic invigorating friend, a proficient instructor, a most gracious hostess to our friends, a trusting confidante, a constant companion and maternal associate.

# CLASS ADVISOR



MARIE S. MILLER  
Assistant Director of Nursing Service

*"Good counsels observed are chains of grace . . ."*



THELMA C. HARDING,  
R.N., B.S., M.A.  
Medical Teaching Supervisor



ALMA M. URFFER, R.N., B.S.  
Nursing Arts Instructor



ORA K. PHILLIPS, R.N.  
Obstetrical Teaching Supervisor



EDITH DOUT, R.N.  
Operating Room Supervisor



MARGUERITE K. REITER, R.N., B.S.  
Pediatric Teaching Supervisor



A. LOUISE HARDING, R.N., B.S.  
Surgical Teaching Supervisor



EDITH D. REICHARDT, R.N.  
Anesthesia Instructor



MARY L. PETERS, A.B.  
Chief Dietitian



CHARLES J. BORNMAN,  
A.B., M.S., Ph.D.  
Sociology Instructor



CLAYTON W. WOTRING,  
A.B., A.M., Ph.D.  
Psychology Instructor



CATHERINE L. NELSON, R.N., B.S.  
Asst. Medical Teaching Supervisor



JULIA O. FIDORACK, R.N.  
Asst. Nursing Arts Instructor



JEANETTE B. K. SILFIES, R.N.  
Asst. Nursing Arts Instructor



ANNE M. OKAL, R.N.  
Asst. Science Instructor



DORIS P. LEH, R.N., B.S.  
Asst. Science Instructor



CATHERINE H. SHINTON,  
R.N., B.S.  
Asst. Surgical Teaching Instructor



MAY L. CROUCH, R.N., B.S.  
Former Director of Nursing



## THE FACULTY CLUB

### OFFICERS

President - - - - - Silfies, Jeanette K.  
 Vice President - - - - - Reiter, Marquerite K.  
 Secretary-Treasurer - - - - - Pickel, Lillian W.

Albright, Lucille  
 Anderson, Eleanor  
 Angelstein, Catherine  
 Barnett, Ruth  
 Benner, Hazel  
 Burger, Helen  
 Butz, Ethel  
 Cordes, Charlotte  
 Dengler, Dorothy K.  
 Dout, Edith  
 Edelman, Marie  
 Edmondson, Agnes  
 Eichel, Ethlyn  
 Fidorak, Julia O.  
 Geidner, Janice

Ginder, Minnie  
 Harding, Louise  
 Harding, Thelma  
 Heffner, Alvera  
 Helfrich, Alice  
 Hinterleiter, Mary  
 Iffland, Edith  
 Jones, Magdaline W.  
 Knecht, Arlene  
 Kistler, Anne  
 Leh, Doris  
 Leh, June B.  
 Lehman, Ruth  
 Long, Ellen  
 Miller, Adele

Miller, Marie  
 Minor, Virginia  
 Mitchell, Josephine  
 Nelson, Catherine  
 Okal, Anne  
 Persley, Betty  
 Peters, Mary L. G.  
 Phillips, Ora  
 Reichardt, Edith D.  
 Shinton, Catherine H.  
 Smith, Marie  
 Spengler, Doris  
 Urffer, Alma  
 Vacendak, Martha P.

# MEDICAL STAFF





RUTH N. BROWN, A.B., M.D.  
Anesthesia Department Chief



JOSEPH D. RUTHERFORD, A.B., M.D.  
Dermatology Department Chief  
Instructor in Dermatology



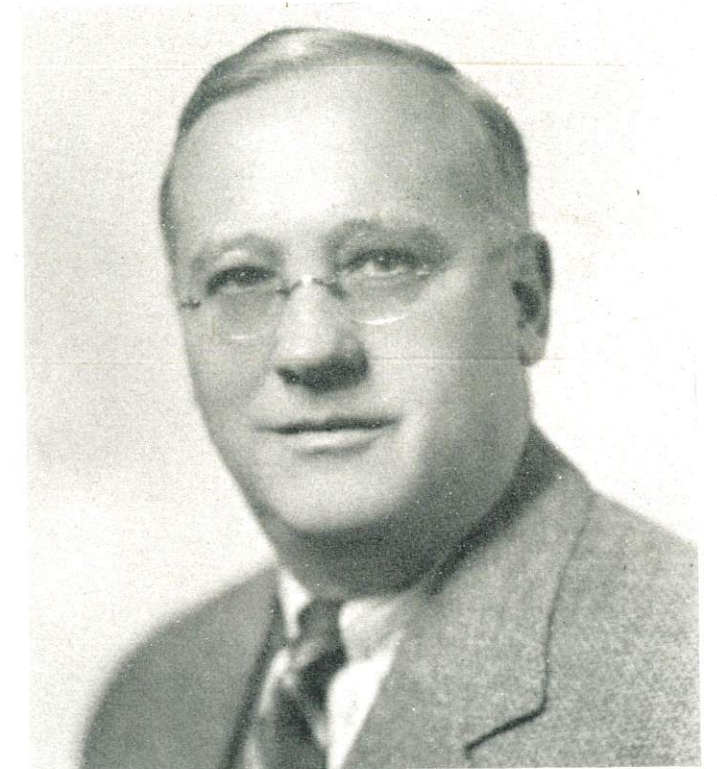
ROBERT J. TURNBACH, B.S., M.D.  
Cardiology Department Chief  
Instructor in Cardiac Diseases



CLIFFORD H. TREXLER  
A.B., M.D., F.A.C.S., F.I.A.M.  
Diplomat of American Board of Surgery  
Dispensary Department Chief  
Surgical Department Associate  
Instructor in Surgical Nursing



JOHN R. MENCH, B.S., M.D., F.A.C.S.  
Ear, Nose, and Throat Department Chief  
Instructor in Otolaryngology



FRED G. KLOTZ, A.B., M.D., F.A.C.S.  
Gynecology Department Chief



WILLIAM B. BARR, M.D.  
Gastro-Intestinal Department Chief



CLYDE H. KELCHNER  
B.S., M.D., D.N.B., F.A.C.P.  
Certified by American Board of Internal Medicine  
Medical Department Chief  
Instructor in Internal Medicine

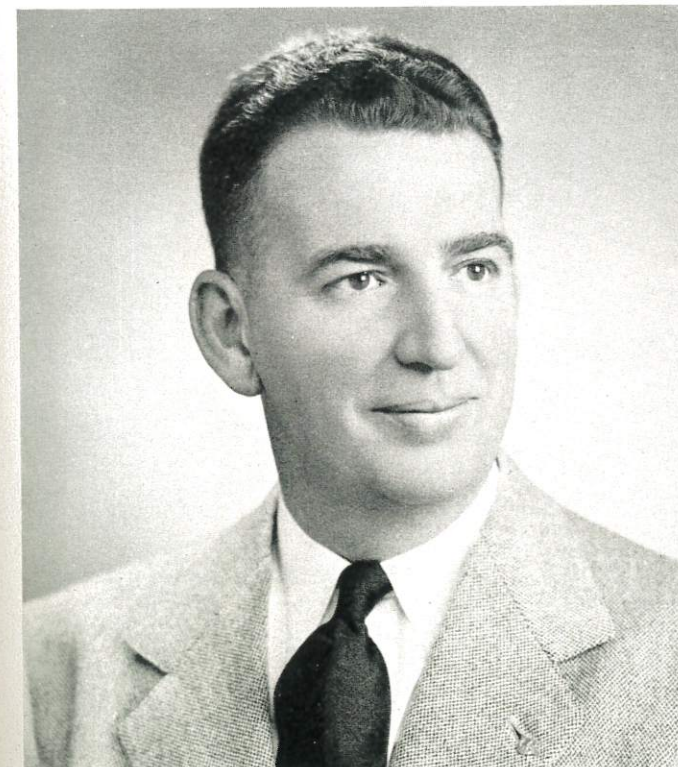


GABRIEL A. SCHWARZ, A.B., M.D.  
Neuropsychiatric Department Chief



SAMUEL A. PHILLIPS, A.B., M.D.  
Ophthalmology Department Chief  
Instructor in Ophthalmology

JOHN J. BERNHARD, M.D., F.A.C.S.  
Obstetrical Department Chief  
Instructor in Obstetrics



KENNETH R. WESTON, B.S., M.D.  
Orthopedic Department Chief  
Instructor in Orthopedic Surgery and Fractures





JOHN J. WENNER  
B.S., M.A., M.D., Ph.D., F.C.A.P.  
Pathology Department Chief  
Instructor in Pathology



RALPH H. HENRY, B.S., M.D.  
Physical Therapy Department Chief

ALEXANDER M. PETERS, M.D.  
Pediatric Department Chief  
Instructor in Pediatrics



KERWIN M. MARCKS, M.D., F.A.C.S.  
Plastic Surgery Department Chief  
Instructor in Plastic Surgery





MARTIN S. KLECKNER  
B.S., M.D., F.A.C.S., F.I.C.S.  
Certified by American Board of Surgery and  
Proctology  
Proctology Department Chief  
Instructor in Rectal and Colon Diseases



W. C. MASONHEIMER, A.B., M.D.  
Urology Department Chief  
Instructor in Urology



ELMER H. BAUSCH, A.B., B.S., M.D.  
Syphilology Department Chief



WILLIAM C. TROXELL, M.D., F.A.C.R.  
X-ray Department Chief



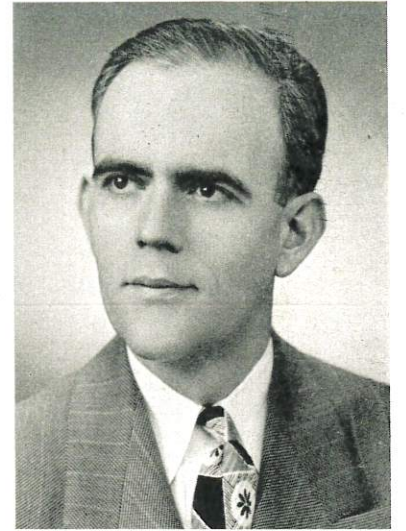
DOUGLAS A. DECKER, B.S., M.D.  
Dermatology Department Associate



HARRY S. GOOD, B.S., M.D., F.A.C.S.  
Dispensary Department Associate  
Surgical Department Associate



M. K. ROTHENBERGER, M.D.  
Ear, Nose and Throat Department Associate

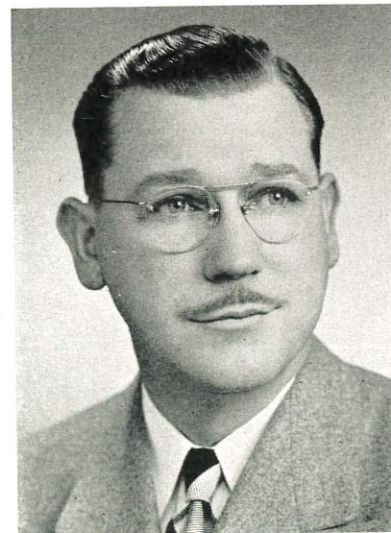


ROGER J. MINNER, B.S., M.D.  
Gastro-Intestinal Department Associate

HARRY MILLER, B.S., M.D., M.S.  
Dispensary Department Associate  
Surgical Department Associate



LEO T. CHYLACK, B.S., M.D.  
Ear, Nose and Throat Department Associate



HENRY E. GUTH, M.D., F.A.C.S.  
Gynecology Department Associate  
Surgical Department Associate  
Instructor in Gynecology



FRANK R. BOYER, B.S., M.D.  
Medical Department Associate





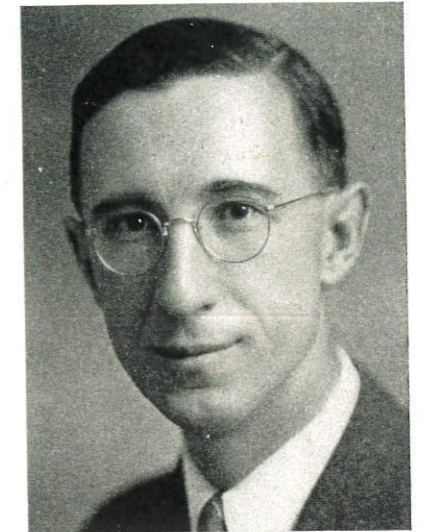
RALPH F. HARWICK, B.S., M.D.  
Medical Department Associate



MORGAN D. PERSON, B.S., M.S., M.D.  
Fellow of American College of General Practice  
Medical Department Associate



MORTON I. SILVERMAN, B.S., M.D.  
Medical Department Associate



LLOYD A. STAHL, B.S., M.D.  
Medical Department Associate  
Instructor in Medical Diseases

CHARLES K. ROSE, B.S., M.D.  
Medical Department Associate



CHARLES P. SELL, M.D.  
Medical Department Associate  
Instructor in Emergencies



RICHARD S. TROXEL, B.S., M.D.  
Medical Department Associate



CARLIN O. WILLIAMS, M.D.  
Medical Department Associate





ARTHUR LINDENFELD, A.B., M.D.  
Neuropsychiatric Department Associate



LYSTER M. GEARHART, A.B., M.D.  
Obstetric Department Associate



FRANCES C. SCHAEFFER, B.S., M.D.  
Obstetric Department Associate  
Instructor in Venereal Diseases

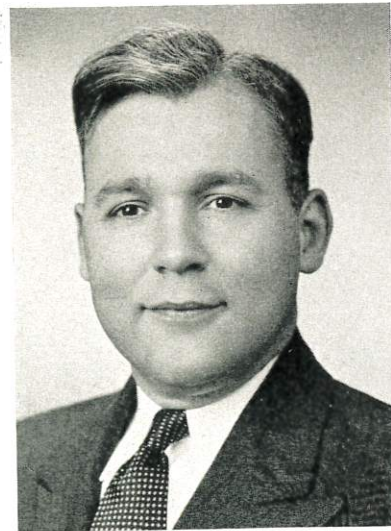


ROBERT M. MUSCHLITZ, A.B., M.D.  
Ophthalmology Department Associate

FREDERICK M. HAAS, B.S., M.D.  
Obstetric Department Associate



DONALD Z. RHOADS, B.S., M.D.  
Obstetric Department Associate



ROBERT E. SHOEMAKER, B.S., M.D., M.Sc.  
Ophthalmology Department Associate



EDWARD GELLER, M.D.  
Orthopedic Department Associate





JOSEPH H. RENO, M.D.  
Diplomat of American Board of Orthopedic Surgery  
Orthopedic Department Associate



PAULINE K. WENNER, A.B., M.D.  
Pathological Department Associate



WILLIAM F. FOX, M.D.  
Proctology Department Associate



GUY L. KRATZER, M.D., M.S.  
Proctology Department Associate

MITCHELL E. KATZ, M.D.  
Pediatric Department Associate  
Instructor in Pediatrics



FORREST G. MOYER, B.S., M.D.  
Pediatric Department Associate  
Instructor in Pediatrics



BYRON D. WILKINS  
B.S., M.D., A.A.P.S., A.I.C.S.  
Proctology Department Associate



ROWLAND W. BACHMAN, M.D.  
Surgical Department Associate





GEORGE S. BOYER, B.S., M.D.  
Surgical Department Associate



CHARLES S. HERTZ  
A.B., M.D., M.S., F.A.C.S.  
Certified by American Board of Surgery  
Surgical Department Associate



ROBERT H. DILCHER, B.S., M.D.  
Urology Department Associate  
Instructor in Venereal Diseases

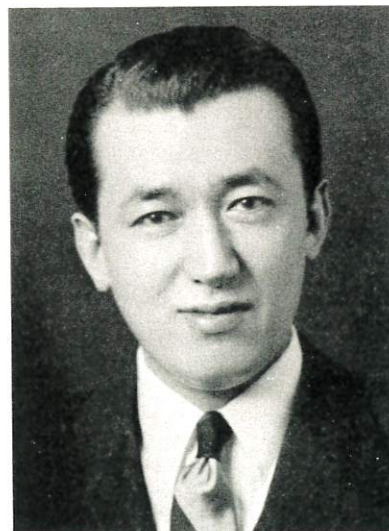


JACOB J. LEVY, B.S., M.D.  
Urology Department Associate

CLARENCE A. HOLLAND  
B.S., M.D., M.S.  
Surgical Department Associate



TAKEO YAMASHITA  
B.S., M.D., F.A.C.S.  
Diplomat of American Board of Surgery  
Surgical Department Associate

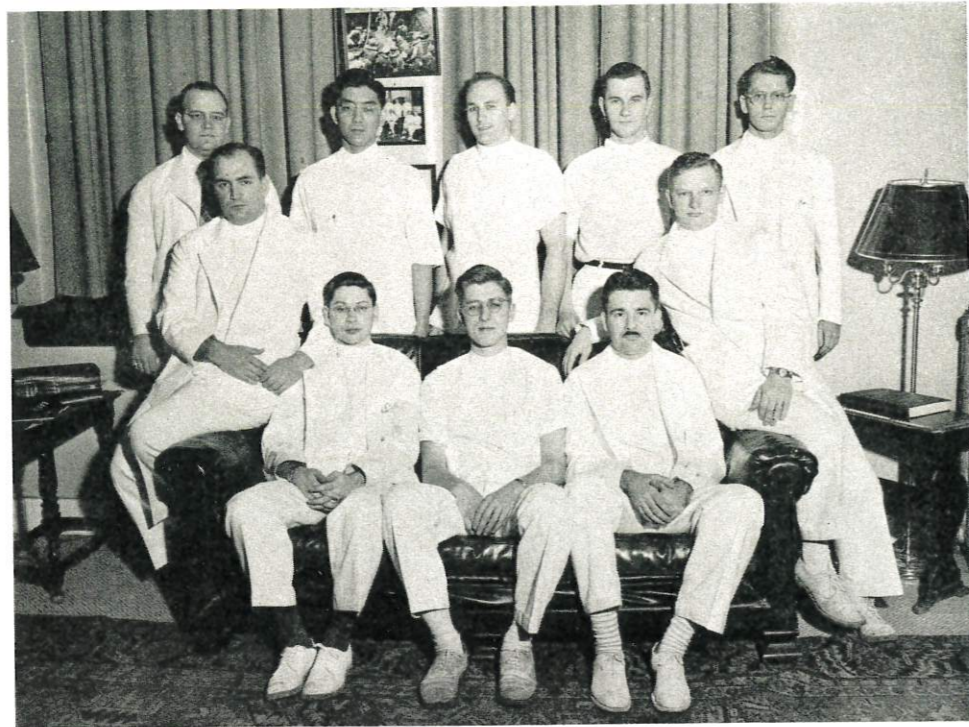


SEPTEMBER 1946

SEPTEMBER 1949

"It matters not at what hour the righteous fall asleep.—Death cannot come untimely to him who is fit to die.—The less of this cold world the more of heaven; the briefer life, the earlier immortality. . ."

- Dr. Mark Bausch - - - - - Former X-ray Department Associate
- Dr. J. Roland Heller - - - - - Former Pediatric Department Associate
- Dr. William F. Herbst - - - - - Former Medical Department Chief
- Dr. Charles H. Muschlitz - - - - - Former Orthopedic Department Chief
- Dr. Robert G. Rhoda - - - - - Former Internist
- Dr. Forrest G. Schaeffer - - - - - Former Obstetrical Department Chief



## INTERNE STAFF

Dr. Robert J. Beitel, Jr.	Dr. Robert W. Leipold
Dr. Donald M. Feigley	Dr. Dan Oniki
Dr. Robt. P. Fenstermacher, Jr.	Dr. Earl S. Reimer
Dr. Gilbert M. Hoffman	Dr. George P. Rutt
Dr. Kenneth E. Jones	Dr. Luther R. Zehner



## RESIDENT STAFF

Dr. Henry H. Fetterman	- - - - -	Medical Resident
Dr. William C. Grasely	- - - - -	Surgical Resident
Dr. Charles D. Schaeffer	- - - - -	Surgical Resident
Dr. George W. Thoma	- - - - -	Pathology Resident
Dr. Stanley J. Yamula	- - - - -	Surgical Resident

### DOCTORS GREETINGS

This book signifies the achievement of a goal. Some of you look forward to graduation as a completion, when in reality, graduation is a beginning.

Three years ago your motto was "I want to do". Now that you possess the skill and knowledge, it should be "I will do". Remember, no job is too big; no job is too menial.

For some, the future means continued service to the sick in the hospital. For others, it is the wedge into such fields as public health and industry. For others, it means marriage. You, too, have had good training for a life of "doing". The satisfaction you will get, from the care of your family and your friends in need, should be a most gratifying reward.

It has indeed been a pleasure to have met and worked with all of you. We have valued your friendship and your cooperation; may we always consider each other friends.

The future eagerly awaits you. Accept life's challenges. The greatest success and good luck to you always.

Henry H. Fetterman







On this fiftieth anniversary of the founding of the Allentown Hospital and the School of Nursing of the Allentown Hospital, I should like to extend a challenge to the members of the Class of 1949.

Your education has been molded by seventy-five years of nursing in America, beginning with Miss Linda Richards—America's First Trained Nurse—and continuing up through the years, marked by the splendid efforts of such women as Isabel Hampton Robb, Adelaide Nutting and Isabel Maitland Stewart.

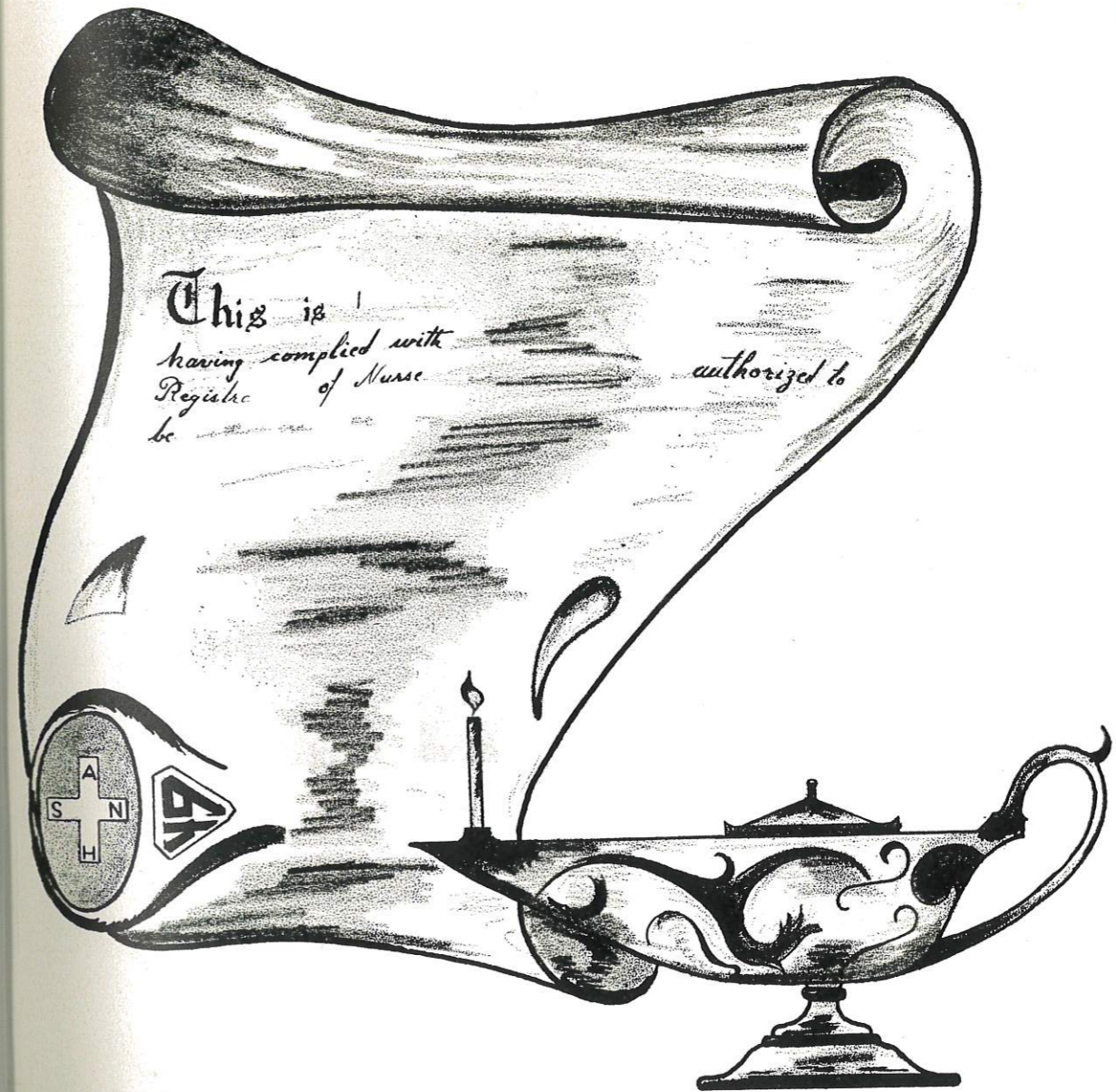
As students in our School of Nursing, you have inherited traditions of excellent nursing care as practiced by previous graduates of this School. You will go on to even higher achievements and thus pave the way for the classes that will follow. This means that it is your responsibility now to take your place in the recognized health team of the world of to-day and to function in such a manner that humanity will be benefitted by your efforts.

One of the wonderful things about being a nurse to-day is that you are acquiring the fundamentals at a time of rapid changes; another is that the opportunities for nurses and the needs for nursing services are expanding on every hand. Disappointments will assail you, but by guided and steady perseverance you will grow in spirit, in education, in Community service, and in your profession. If each day you can feel that the world is a better place because you have been a part of it, then you will have met your professional trust. If you discharge your responsibility to-day in a praiseworthy manner, you will have provided for a better world to-morrow.

Please remember this: fill your obligations to-day as a nurse and a citizen to the best of your ability; you will then have done your share in stimulating America's nursing care. This should constitute for you as students and graduate nurses a public responsibility and a professional challenge.

ETHLYN L. EICHEL

# SENIORS





## CLASS OFFICERS

W. JANE LOUDEN  
MARY E. OBERHOLTZER

VIOLET M. TREXLER  
ANITA M. WELLIVER

President	- - - - -	Mary E. Oberholtzer
Vice President	- - - - -	Violet M. Trexler
Secretary	- - - - -	W. Jane Louden
Treasurer	- - - - -	Anita M. Welliver
Student Council Representatives	- - - - -	Jean L. Oswald Janet M. Snyder
Faculty Advisor	- - - - -	Marie S. Miller
Class Colors	- - - - -	White and Gold
Class Flower	- - - - -	Gardenia

"In as much as ye have done it unto one of the least of these my brethren, ye have done it unto me."

The sun be warm and kind to you,  
The darkest night, some star shine through,  
The dullest morn, a radiance brew,  
And when dusk comes - - - God's hand to you.

ELEANOR POWERS

What earthly thing of beauty aroused this poetic out burst, I do not know. The finer qualities of the soul appear to have been the source of its inspiration, such as love sympathy, faith, and human kindness—qualities indispensable in a nurse's personality. Nevertheless, "God's hand to you", my classmates.

MARY E. OBERHOLTZER

## CAROLYN E. ANGSTADT

Kutztown, Pennsylvania

*Chorus 1, 2  
Forum Group 3  
Servantes Editorial Staff-Co-Editor*

Sparkling smile, congenial manner . . . .  
Friendly "Connie" . . . . Enjoys sleeping,  
music, nice clothes, and cokes . . . . Her favorite  
pastime, planning a summer wedding.



## HELEN C. BAILEY

Quakertown Pennsylvania

*Chorus 1, 2  
Night School-Typing 3*

Olive-skin and dark hair, an attractive  
combination . . . . Hobby consists of collecting  
newspaper clippings of old acquaintances . . . .  
Experienced knitter . . . . "For Pete's sake"  
. . . . Bailey's common word unit.





BETTY L. BAKER

Easton Pennsylvania

*Chorus 1, 2  
Forum Group 3  
Servantes Editorial Staff*

"Pete" . . . Sunny disposition, likable . . . Active contributor to "gab sessions" . . . Enjoys hunting . . . Lives on "them thar Easton Hills" . . . Peripheral interests center about Albright College.

PATRICIA S. BERGER

Allentown Pennsylvania

*Bowling 2  
Dancing 1  
Forum Group 3*

Dancing thru life with a wide smile . . . Full of pep . . . Steak sandwiches and 'Lil Abner comics comprise her specialties . . . A dual personality involving Lehigh University and University of North Carolina . . . Who? . . . That's right, Pat.



KATHLEEN M. BEIL

Weaversville Pennsylvania

*Chorus 2, 3  
Dancing 1*

"Kathy" . . . Freckles, light brown hair . . . Most always knitting or sleeping . . . Joins in numerous pinochle games . . . Haunts the mail department daily . . . Has a priority on hot dogs and "Schmatze".



ELINOR J. BINGELL

Allentown Pennsylvania

*Chorus 1, 2, 3*

A decided individualist . . . Fun-loving . . . Ingenuous conversationalist . . . Has a passion for fantastic hair styles . . . Anxious to please . . . Always in a hurry . . . That's "Bing".



JEAN BLAZOFSKY

Egypt Pennsylvania

*Chorus 2, 3  
Dancing 1*

Quiet and deliberate "Jeannie" . . . Friend to all . . . Inclined to tardiness concerning appointments . . . Admired for her neat page-boy and sweetness . . . Delights in increasing her kaleidoscopic wardrobe.

ADAMAE COHEN

Bethlehem Pennsylvania

*Bowling 2  
Swimming 1  
Forum Group-3*

Always in a hurry to go nowhere in particular . . . Early to bed, early to rise . . . Has a preference for Tabu cologne and Ralph . . . Strikingly congenial . . . Who else but "Petie".



VERA E. CLEWELL

Nazareth Pennsylvania

*Chorus 1, 2, 3*

Sweet, petite, and neat . . . An angelic disposition . . . Faces all situations with complete composure . . . Never boisterous . . . Emits a spicy sense of humor, contrasting her quietness.



JEAN M. DANNER

Allentown Pennsylvania

*Bowling 2  
Chorus 1, 3*

Light brown hair upon a towering head . . . Jovial in nature . . . Pinochle shark . . . Dislikes hearing 6 a.m. alarm . . . Thrives on chocolate cake . . . "Was macht?" . . . Doggie roasts.



ELIZABETH L. DEILY

Allentown Pennsylvania

*Chorus 2, 3  
Swimming 1  
Servantes Editorial Staff*

Straightforward . . . In and out of trouble . . . That's Deily . . . Has a characteristic half-smile . . . Laughs at all your jokes . . . Habitually thriving on forty winks in class.



DORIS A. DEPPE

Northampton Pennsylvania

*Chorus 1, 2  
Forum Group 3  
Servantes Editorial Staff*

Agreeable, attractive, loquacious . . . Acquires friends readily . . . An honorable Northamptonian . . . Quietness prevails . . . However, active assets surpass this trait.

JOYCE G. DENICOLA

Easton Pennsylvania

*Chorus 2, 3  
Dancing 1*

"Pepsi" . . . Cute, candid, and petite . . . Beautiful big brown eyes that tell all . . . Loves eating and sleeping . . . Has a weakness for jewelry . . . Oh, those long skirts . . . Haunts record shops.



THERESA B. FICKERT

Bath Pennsylvania

*Bowling 2  
Dancing 1  
Forum Group 3  
Servantes Editorial Staff*

Sympathy and a heart of grace . . . Calm, easy-going, unruffled . . . Sporadic dieter . . . Deft with knitting needles . . . Devoted enthusiast of good books and Romance magazines.



DORIS L. FINK

Fullerton Pennsylvania

*Bowling 2*  
*Dancing 1*  
*Night School—Typing 3*  
*Servantes Editorial Staff*

Versatile, animated, self-confident . . . .  
Nonsensical mimic . . . . Believes it's a woman's  
privilege to change her mind . . . . Never fails  
with that persistent "Hi, Mabel!"

DORIS J. GUTH

Cetronia Pennsylvania

*Bowling 2*  
*Chorus 3*  
*Swimming 1*

Red hair, blue eyes . . . . She's a cutie  
. . . . With Harold when not on duty . . . .  
Giggles in her sleep . . . . Sweetness she'll  
always keep . . . . Teasing, her favorite nag  
. . . . Always ready for a gag.



MARION C. GABUZDA

Freeland Pennsylvania

*Chorus 2, 3*  
*Dancing 1*

"Gabby" to many . . . . Stately, gracious,  
attractive . . . . Honey-gold hair . . . . Shining  
perfection of grooming . . . . Shy smile . . . .  
Fervent interest in obstetrics . . . . Desirable  
associate.



KATHRYN L. HAAS

Fogelsville Pennsylvania

*Chorus 1, 2, 3*

Courteous, thoughtful, methodical . . . .  
Precision rates . . . . Capable contralto . . . .  
Fond of pinochle and that Studebaker . . . .  
Displays distinctive wavy dark hair.



MARIE E. HARDING

Slatington Pennsylvania

*Chorus 1, 2, 3*

Harding to everyone . . . . Witty and gay . . . . Always knows just what to say . . . . A member of chorus . . . . But not always there . . . . Noted for telling her jokes everywhere.



BETTY J. HIRSCHEL

West Catasauqua Pennsylvania

*Chorus 2  
Swimming 1  
Forum Group 3*

Brown-eyed brunette . . . . Chic, impeccable grooming . . . . Impulsive, vivacious, feminine . . . . Popularity plus . . . . Rarely seems to be on time . . . . "Variety is the spice of life!"



BETTY L. HEPLER

Allentown Pennsylvania

*Chorus 1, 2  
Forum Group 3  
Servantes Editorial Staff-Editor*

Obliging, reliable, industrious "Hep" . . . . Hazel-eyed strawberry blond . . . . Intriguing smile . . . . Possessor of picturesque hands . . . . Developing domesticity . . . . A consistent, enthusiastic, and persevering worker.



ROSE KOKOLUS

Ballietsville, Pennsylvania

*Chorus 2  
Swimming 1  
Forum Group 3*

Sedate, reliable, reserved . . . . Rarely frowns . . . . "Koke's" head is usually concealed in a book or a pillow . . . . Keeps the Annex percolator percolating . . . . Pleasant to talk to.





THELMA M. KURINEC

Summit Hill Pennsylvania

*Chorus 2, 3  
Dancing 1*

"Sis" . . . . A "coal-cracker" at heart . . . .  
Nimble-witted, alacritous . . . . Usually sleeping  
or waiting for Pete to call . . . . Favorite dream,  
'a sunny weekend off duty'.

ROBERTA R. LANFEAR

Palmerton Pennsylvania

*Chorus 3  
Dancing 1  
Swimming 2*

"Birdie" . . . . Dark hair, twinkling eyes . . . .  
Amicable, talkative . . . . Eagerly awaits food  
packages from home . . . . Not afraid to say  
what she thinks . . . . Heading for a double  
career.



CHARLYNE D. LAGERQUIST

Allentown Pennsylvania

*Chorus 1, 2, 3*

Our gal, "Charlie" . . . . Black hair, brown  
eyes, a combination desired by all . . . . Afflicted  
by baseball spectatoritis . . . . Frequent pat-  
ronizer of diet lists . . . . Ward E rates high.



ELSIE G. LANTZ

Topton Pennsylvania

*Chorus 2  
Swimming 1  
Forum Group 3  
Servantes Editorial Staff*

Natural, gay, likeable in every way . . . .  
Reserved at times . . . . Prefers taking long  
walks . . . . Enjoys concerts, operas, culture par  
excellence . . . . Possesses a quiet determination.



RUTH M. LEIBY

Nazareth

Pennsylvania

*Chorus 1, 2, 3*

Tall, dark, attractive . . . . Loquacious and animated . . . . Sly punster with decided opinions . . . . Idealistic, understanding . . . . Addicted to knitting, reading, and being with Dick.

MARY J. LESSLIE

Towanda

Pennsylvania

*Chorus 2, 3  
Dancing 1*

Always ready for fun . . . . That's "Les" . . . . Constantly worries about gaining weight, yet devours fudge at every convenience . . . . Awaits mail call daily . . . . Wide literary interests.



JEAN O. LEISER

Bethlehem

Pennsylvania

*Chorus 1, 2, 3  
Servantes Editorial Staff*

Amiable, trustworthy, efficient . . . . Uncontrollable laughter . . . . Sharp-witted, amusing anecdotes . . . . Occasional scatter-brain lapses . . . . Pride and joy, her diamond.



CHARMAINE K. LEVAN

Allentown

Pennsylvania

*Chorus 2, 3  
Swimming 1*

Imagination, yipe! . . . . Friendly, courteous, impulsive . . . . Specialty and weakness, clothing and jewelry . . . . Definite passion for food . . . . Persevering student . . . . Chief desire, earning a B.S.



GRACE LINSENBIGLER

Bethlehem Pennsylvania

*Chorus 2, 3  
Dancing 1*

"Gracie" . . . Tall, slender blonde . . . Allergic to alarm clocks . . . A gift for friendship and service . . . Delights in getting an extra forty winks.

W. JANE LOUDEN

Allentown Pennsylvania

*Class Secretary 1, 2, 3  
Chorus 2, 3  
Dancing 1*

"I'm going on a diet tomorrow", Janie's daily pledge . . . Good things come in small packages . . . Contented making cookies for Jim . . . Loves to roam the keyboard with Tchaikowsky.



JEAN L. LITSCHKE

Alburtis Pennsylvania

*Chorus 2, 3  
Swimming 1*

Classic appearance . . . Quick, flippancy, madcap moods . . . Displays a nonchalant attitude . . . A cinema enthusiast . . . Craves home-cooked food and Alburtis atmosphere . . . A career in the Navy.



HARRIET C. MADEIRA

Fleetwood Pennsylvania

*Chorus 1, 2  
Forum Group 3  
Servantes Editorial Staff*

Ooh, that natural curly hair . . . "Bambi" eyes . . . Fifth Avenue frilly clothes . . . Varieties of shoes . . . A chronic worrier with limitless energy . . . Genuine interest in people . . . A loyal daughter of Fleetwood.



FAYE E. MCKEEVER

Fullerton Pennsylvania

*Chorus 1, 2, 3*

Tall, slim, and Irish . . . Heads the mail list . . . Enjoys a variety of sports . . . Phenomenal high voice, phonetics in the bath-tub . . . Eight hours' sleep preceded by a coke and magazine.

JEAN R. MILLER

Allentown Pennsylvania

*Bowling 2  
Chorus 3  
Swimming 1*

Vivacious, high-flying, attractive brunette . . . Adapts well socially and athletically . . . Ready joker with a hearty laugh . . . Envied owner of a beautiful leopard coat.



EVELYN K. MILLER

Emmaus Pennsylvania

*Chorus 2, 3  
Dancing 1*

Unperturbable, indeed . . . Produces a personalized giggle with loss of muscle tone . . . Known for her dry sense of humor . . . Will she ever get enough sleep?



JEANETTE F. MILLER

Coopersburg Pennsylvania

*Chorus 2, 3  
Swimming 1*

Uniquely quiet . . . Even-tempered . . . Composed with integrity . . . Timid? . . . Decidedly not . . . Entertains a pleasurable social sphere . . . Possesses an acute radio ear, mystery plus . . . An inviting acquaintance.



MARY E. OBERHOLTZER

Allentown Pennsylvania

*Class President 1, 2, 3*  
*Student Council 1, 2, 3—Representative*  
*Chorus 1, 2*  
*Forum Group 3*  
*Servantes Editorial Staff*

Incomparable "Obie" . . . . Endowed with leadership . . . . Ambitious, cool-thinker, artistic . . . . Casual dresser . . . . The sports woman, sans swimming . . . . Sound-sleeper, incorrigible procrastinator, proverbial late hours . . . . Invigorating to know.

JEAN L. OSWALD

West Catasaqua Pennsylvania

*Chorus 1, 2, 3*  
*Servantes Editorial Staff*

Small but dynamic . . . . Amiable, considerate . . . . Active in contemporary affairs . . . . Another of our enthusiastic knitters . . . . Highly excitable, constant worrier . . . . "Honest t' John!" . . . . Extra-curricular activities combine Moravian, Ray, and home.



JEAN E. OCHS

Kresgeville Pennsylvania

*Chorus 2, 3*  
*Dancing 1*  
*Servantes Editorial Staff*

Quick-witted, jovial, out-spoken . . . . Has a striking combination of blond hair and brown eyes . . . . Paints and brushes for class posters . . . . Hot dogs and dancing . . . . Happiest in the great out-doors.



NELLANNE RADKO

Pittsburgh Pennsylvania

*Forum Group 3*

Flighty, energetic "Nell" . . . . Rapid-fire, reminiscent conversationalist . . . . Spontaneous sophisticated, individualistic . . . . Disarmingly frank . . . . Aiming for a career in the "Big City".



MARION J. RAU

Allentown Pennsylvania

*Chorus 1, 2, 3*

Always in a rush, either to go out or to bed . . . . Infrequent moments of studying . . . . Entertaining vocalist for local swing band . . . . Sympathetic ear to other's problems . . . . "I thought I'd die."

MARIE L. REED

Pine Grove Pennsylvania

*Dancing 1, 2  
Forum Group 3*

A spontaneous giggle . . . . It's usually Marie . . . . Gentle, charming, happy-go-lucky . . . . Exhibits a ravenous appetite . . . . Smooth "bangs", neat dresser . . . . Prefers a varying social sphere . . . . Her by-words, "Better late than never!"



ETHEL N. R. RAY

Allentown Pennsylvania

*Bowling 2  
Chorus 1, 3  
Servantes Editorial Staff*

Fleetfooted, reserved, generous . . . . As she goes her own way . . . . Fluctuating moods . . . . Continual doodler in class . . . . Jig-saw puzzles, knitting, mystery novels . . . . Gay, easy comradeship . . . . Potential home career.



BETTY M. REINERT

Breinigsville Pennsylvania

*Dancing 1  
Swimming 2  
Night School—Art 3  
Servantes Editorial Staff*

Where there's fire, there's "Smokey"! . . . . A 'must' for a party . . . . Dabbles with paint . . . . Never without the "New Look" . . . . Congenial, impetuous . . . . Enjoys eating Sm-obies and onions.



SARA E. REITER

Myerstown Pennsylvania

*Chorus 1, 2, 3*

Shell-rimmed glasses covering big brown eyes . . . . Excitable, chronic worrier . . . . Those checks she cashes . . . . Recurrent feather-cuts . . . . Future plan, Veteran Service Nurse.

RUTH A. ROSENBERY

Bethlehem Pennsylvania

*Student Government—Vice President 3  
Student Council 3—Representative  
Chorus 2, 3  
Dancing 1  
Servantes Editorial Staff*

"Rosie" . . . . Intangible, understanding, determined . . . . Usually speaks her mind . . . . With friendliness to all . . . . Long weekends in Reading . . . . Stable and self-determined . . . . A self-sufficient and consistent worker.



LORRAINE G. REPSHER

Chapman Quarries Pennsylvania

*Chorus 2  
Dancing 1  
Night School—Typing 3  
Servantes Editorial Staff*

Hair of golden brown . . . . Always laughing, never a frown . . . . Setting hair, her specialty . . . . Vivacious, loquacious personality . . . . Nibbling pretzels, taking a stroll . . . . None but "Rep" portrays such a role.



ELLEN I. RUCH

Kriedersville Pennsylvania

*Chorus 1, 2, 3  
Servantes Editorial Staff*

Slim, good-natured, easy-going . . . . Warm smile . . . . Habitually misplacing articles  
Pet determination, to stay awake in the movies . . . . Lives to eat . . . . Sure to be a success.



BETTY M. SCHELL

Bally Pennsylvania

*Chorus 1, 2, 3*

"A moldy crow" . . . . that's everyone to Schell . . . . Jovial, courteous . . . . Early riser . . . . "Freddie", her spontaneous thought . . . . Our chief knitting coach . . . . Tirelessly attempting to complete her hopechest.



ORA D. SCHRAY

Allentown Pennsylvania

*Chorus 2, 3  
Dancing 1  
Servantes Editorial Staff*

Vivacious, agile, happy-go-lucky . . . .  
Something every minute . . . . Usually tearing off on overnights . . . . Admires punctuality . . . . Hopes to cultivate the trait someday.

BETTY J. SCHNECK

Coplay Pennsylvania

*Chorus 2,  
Dancing 1*

"Schneckie" . . . . Jet black hair arranged in an upsweep . . . . Active, obliging, uninhibited . . . . Has a variety of escorts . . . . Perpetual night owl . . . . Delights in Pennsylvania Dutch style cooking.



JAYNE E. SCHWEYER

Hokendauqua Pennsylvania

*Bowling 2  
Chorus 3  
Swimming 1*

Carefree, nonchalant . . . . Never misses a sale—especially where shoes are concerned . . . . Talks fast and furious on occasions . . . . Ardent football fan . . . . Can be found waiting for Don on evenings off.





DOROTHY A. SEYFRIED

Tatamy Pennsylvania

*Chorus 2, 3  
Dancing 1*

"I laugh when I'm merry" . . . Well-groomed, artistic . . . Twinkling blue eyes . . . Noted for her versatile hair-do's . . . Faithful to Tatamy . . . Sociable, always out for a good time.



BLANCHE G. SHENKENBERGER

Neffs Pennsylvania

*Swimming 2  
Forum Group 3*

"Shenky" . . . Responsive and practical . . . With a ready giggle . . . Has a personalized technique for chewing gum . . . Torn between love of food and diet . . . Constantly devising reducing exercises . . . Desires a B.S.

MARY L. SHAMONSKY

Tamaqua Pennsylvania

*Chorus 2  
Swimming 1  
Forum Group 3*

Photogenic Mary-Lou . . . A result of her sparkling smile and golden hair . . . Original taste for clothes . . . Another football fan . . . Moments of idleness sprinkled with day-dreaming . . . A future obstetrical nurse.



MARILYN M. SHIPMAN

Pen Argyl Pennsylvania

*Student Government—President 3  
Student Council 3—Representative  
Dancing 1, 2  
Forum Group 3  
Servantes Editorial Staff*

Never without a tea-bag . . . Active organizer and competent Student Government President . . . A chronic worrier with limitless energy . . . Glib conversationalist, joining most "gab" sessions . . . Her pride and joy, that sparkling diamond.



VERA E. SHOEMAKER

Allentown Pennsylvania

*Chorus 1, 2, 3*

Jocular, agreeable, good-humored . . . .  
Brevity of length . . . . Has a special priority  
for getting into trouble . . . . Pleasures in racing  
the Studebaker most anywhere . . . . A good  
sport.

JANET M. SNYDER

Palmerton Pennsylvania

*Student Council 3—Representative  
Chorus 2—Secretary 3  
Swimming 1  
Servantes Editorial Staff*

Big twinkling eyes . . . . Photogenic smile  
. . . . Conservative, cordial . . . . Quiet prettiness  
. . . . Unable to resist bubble-gum and candy  
. . . . Soon will be "Shuffling off to Buffalo".



GRACE M. SMITH

Hamburg Pennsylvania

*Chorus 1, 2  
Forum Group 3*

"Gracie" . . . . Has a yen for town and  
country . . . . Shy, sensitive manner . . . . Sur-  
prisingly feminine domestic trends . . . . Sympa-  
thetic listener, gullible . . . . Sweet disposition  
. . . . Charming to know.



MARIETTA E. STAFFIERI

Bethlehem Pennsylvania

*Bowling 2  
Night School—Typing 3*

Good things come in small packages . . . .  
This one is dark and pretty, too . . . . Generous,  
easy-going, sprightly . . . . Quick-silver moods,  
good-naturedly complaining . . . . Rarely fails  
with that faithful daily letter.



FERNE D. STROHL

Northampton Pennsylvania

*Chorus 1, 2, 3*

Tall, stately, statuesque . . . Filled with vim, vigor, and vitality . . . Humorously witty, fun to know . . . Spark of any party . . . A powerful chorus alto . . . Ever faithful to Northampton.

VIOLET M. TREXLER

Topton Pennsylvania

*Class Vice President 1, 2, 3*  
*Student Government—House President 3*  
*Student Council Representative 3*  
*Chorus 2, 3*  
*Dancing 1*  
*Servantes Editorial staff*

Thoughtful, sincere "Trex" . . . Fascinating smile accompanied by cute dimples . . . Active class participant . . . Mass production knitter . . . Goes for ice-cream and Jansey in a big way.



ROBERTA J. SURPLUS

Bangor Pennsylvania

*Chorus 1, 2, 3*

Inviting smile . . . Slow to anger . . . Licorice, yum! . . . If you like the movies, she's your gal . . . A flash at cards . . . "So wot's cooking?", her inevitable greeting.



CATHERINE A. TURBEDSKY

Cementon Pennsylvania

*Chorus 2*  
*Swimmin 1*  
*Forum Group 3*  
*Servantes Editorial Staff*

Kind-hearted, conscientious "Kitty" . . . Quiet determination . . . Unparalleled in theory . . . Cool good sense with lapses into nonsense . . . Possessor of an accommodating back-scratcher . . . Optimistic in most view-points . . . Teeming with sunshine.



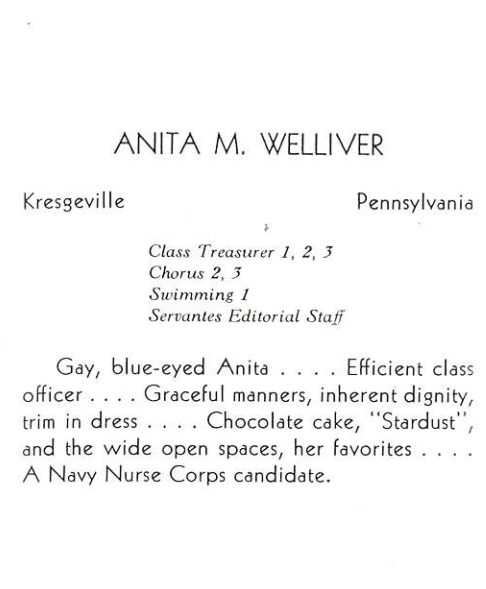


STEPHANIE VASIEVICH

Bethlehem Pennsylvania

*Student Council 1—Representative  
Chorus 2, 3  
Dancing 1*

Chestnut hair with bangs . . . Always in and out of the "red" . . . Bargain days downtown, dish-night at the movies . . . Sincere and self-contained . . . That's our "Stef".



ANITA M. WELLIVER

Kresgeville Pennsylvania

*Class Treasurer 1, 2, 3  
Chorus 2, 3  
Swimming 1  
Servantes Editorial Staff*

Gay, blue-eyed Anita . . . Efficient class officer . . . Graceful manners, inherent dignity, trim in dress . . . Chocolate cake, "Stardust", and the wide open spaces, her favorites . . . A Navy Nurse Corps candidate.

BERYL M. WEICKER

Tamaqua Pennsylvania

*Chorus 2  
Swimming 1  
Forum Group 3*

Wavy blond pompadour . . . Energetic, serene . . . Future Navy nurse . . . Enjoys pretzel snacks between meals . . . Accessories plus, ankle-strap shoes and blue-rimmed glasses.



FAITH M. WILSON

Allentown Pennsylvania

*Chorus 1, 2, 3*

Chestnut brown tresses . . . Neat braids on duty . . . Starched white aprons Mama does . . . "Must run in home" . . . Proud of her Irish temper . . . Craves good cookies.



GENEVIEVE J. YURISH

Freeland Pennsylvania

*Chorus 3  
Dancing 2  
Swimming 1  
Servantes Editorial Staff*

Small but mighty "Gen" . . . Doll-faced, clear glowing skin . . . Intrinsically tricky and uniquely interesting . . . Exceptionally good listener . . . Rarely heard above a whisper . . . Contented eating hot dogs and cucumbers.

BARBARA M. ZIEGLER

Allentown Pennsylvania

*Chorus 2, 3  
Dancing 1*

Usually saying the right thing at the wrong time . . . "Babs" with that beautiful red hair . . . Charming confusion . . . Enjoys music and art . . . Has a laugh for all your jokes.



## FORMERLY ON OUR CLASS ROSTER

Entering the School of Nursing March 1, 1946

Arndt, Jean E.	Mertz, Anna M.
Bowman, Almyra E.	Platt, Maybelle F.
Brunner, Nancy J.	Stuemke, Barbara A.

Entering the School of Nursing August 26, 1946

Buskirk, Leah B.	Kressley, Isabel G.
Chapman, Lorraine A.	Schaadt, Lorraine E.
Davies, Anne E.	Smith, Shirley V.
Eckman, Dorothy M.	Snyder, Althea C.
Kline, Elverna M.	



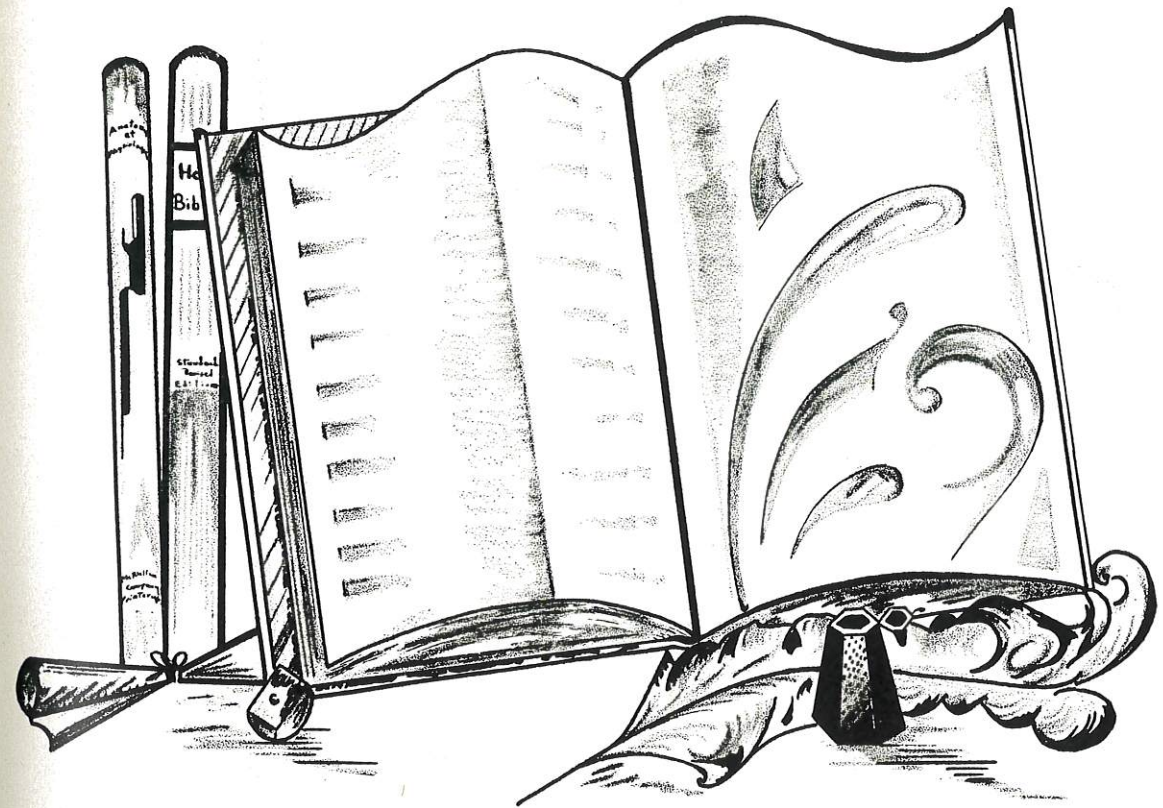
. . . "Nursing is an art, and if it is to be made an art, it requires as exclusive a devotion, as hard a preparation, as any painter's or sculptor's work; for what is the having to do with dead canvass or cold marble, compared to having to do with the living body and the temple of God's spirit. And it is one of the finest of the Arts, I had almost said the finest of the Fine Arts."



## FLORENCE NIGHTINGALE PLEDGE

I solemnly pledge myself before God and in the presence of this assembly to pass my life in purity and to practice my profession faithfully. I will abstain from whatever is deleterious and mischievous, and will not take or knowingly administer any harmful drug. I will do all in my power to elevate the standards of my profession, and will hold in confidence, all personal matters committed to my keeping, and all family affairs coming to my knowledge in the practice of my calling. With loyalty will I endeavor to aid the physician in his work, and to devote myself to the welfare of those committed to my care.

## FEATURES





## SERVANTES STAFF

Editor	Betty Hepler
Co-Editor	Carolyn Angstadt
Managing Editor	Jean Oswald
Assist. Managing Editor	Doris Deppe
Photographic Editor	Marilyn Shipman
Literary Editor	Catherine Turbedsky
Layout Editor	Mary Oberholtzer
Art Editors	Jean Ochs, Betty Reinert
Class Will	Doris Fink, Lorraine Repsher, Ellen Ruch

### — RESEARCH EDITORS —

Betty Baker  
Elizabeth Deily  
Theresa Fickert  
Elsie Lantz  
Jean Leiser

Harriet Madeira  
Ethel Ray  
Ruth Rosenberry  
Ora Schray

Janet Snyder  
Violet Trexler  
Anita Welliver  
Genevieve Yurish

## CASE HISTORY

### Introduction:

Name: Class of 1949  
Address: Nurses Homes 17th and Chew Sts.  
Date of Admission: March 1946 and September 1946  
Date of Discharge: March 1949 and September 1949  
Service: Humanity  
Diagnosis: Potential Registered Nurses

### Social History:

Age: Neither too young nor too old.  
Nationality: Pennsylvanians all.  
Parents: The usual two—Mother and Father.  
Income: Anything the folks could spare after essentials—books, breakage, dues, etc.—were taken care of.

General Intelligence: Questionable!!!

### Health Habits:

Rest: Hours off duty and class periods.  
Play: Dates until the wee hours of the night (10 P.M.)  
Recreation: Christmas and Spring Semi-formals.  
Informal parties enlivened by the faculty.  
Diet: Hi-Carbohydrate.

Educational History: Graduates of accredited high schools.

Mental Attitude: Normal until completion of State affiliation.

Personality: Split—Professional and Social.

Behavior: Individualistic.

### Problems:

Hearing the alarm at 6 A.M.  
Being on time for chapel, duty, and class.  
Passing tests.  
Conflict between sleeping and studying.  
Trying to balance budgets and waistlines.  
Dates!!!

### Medical History:

Past: Athlete's Foot, Sun-burn, Strep-throat, Appendicitis, Hi Sed. Rates, Laryngitis.

### Present Illness:

Onset: Capping ceremonies.  
Duration: Two and a half years.  
Transitional Period: Complete Nursing Staff change during last year.

Symptoms: Aching feet, circles under the eyes, disrupted hair-do's and chapped hands in O.R. and Isolation, a-cute diarrhea.

Physical Examination: Yearly ordeal performed by resident physician.

Special Examinations: Following completion of each course.  
Re-take—with charge of \$1.00 (one dollar).

### Treatment:

Health Office Orders: Empirin Comp, Coryza, Hoarseness Mixture, Kaopectate.

### Nursing Office Orders:

More studying with less noise.  
Less jewelry and more hair-nets.  
Lights-out at 10:30

Prognosis: Debatable!!!!

## LAST WILL AND TESTAMENT

We, the class of Nineteen Hundred and Forty-Nine, with melancholia and discontentment in our hearts at the thought of leaving these beloved premises, do hereby devise our last will and testament in order that posterity may enjoy the following priceless possessions. We hope that you will accept them with the same gratitude with which they were bequeathed.

### ITEM I

To our Directors, Board of Trustees, Staff, and Faculty, we wish to extend our deepest appreciation for the inestimable assistance given us, for the advice we needed so much, and for the quiet, patient way you guided us throughout our three years. We jest about your mannerisms and favorite expressions, but we couldn't have done without you.

### ITEM II

For greater smoking pleasure, Lorraine Repsher gives Alice Trexler her brown pipe.  
After much consideration, Charlyne Lagerquist and Marie Reed retire from 'Berg's campus to make room for Elizabeth Haas.  
"Stormy Weather"—To Jean Lischer we give Harriet Madeira's curly hair.  
A printed collection of Marietta Staffieri and Vera Shoemaker's jokes to Agnes Schroeder.  
Catherine Turbedsky gives all her 95's to the students receiving "LITTLE LETTERS" from Miss Adele Miller.  
Kathleen Beil, our "Freckle Queen", crowns Dorothea Scherer.  
On "dish night" Roberta Surplus leaves first run features at the 19th St. Theater to the anonymous member.  
Jayne Schweyer's "gift for gab" to Marion H. Haines. Oh, what colorful tales!  
Just in case Gloria Yeakel should need it, we give her Patricia Berger's bottle of H<sub>2</sub>O<sub>2</sub>.  
For Dorothy McNelly's baby complexion, Doris Deppe gives her last cake of Camay.  
At last Jean Hochstatter needs no prompter, for Marion Rau's alarm clock will awaken her.  
Roberta Lanfear and Sara Reiter's ability to burn the candle at both ends to Mary Hutnyan.  
Ruth Rosenberry and Helen Bailey's seriousness to Esther Kidd, in case of fire.  
Dorothy Seyfried leaves Dolores Kemmerer her eye-lashes as an added attraction.  
For a short cut to "longer sleeping", Genevieve Yurish gives her hair to Elizabeth Sheldon.  
More freedom for Arlene Peters with Elsie Lantz's left-over late leaves.  
Mary Lou Shamonsky leaves for Joyce Haines her diary with all its treasures of cherished memories.  
Another fan for Roy Rogers is Sara Dunstan, who inherits Jean Och's love for Hilly Billy music.  
Barbara Ziegler's crowning glory to Grace Kozo.  
Nellanne Radko's knowledge of the "Big Cities" to enthusiastic seekers.  
Ruth Leiby and Evelyn Miller's domesticity to Janet Rotenberger—there's no place like home.  
Doris Guth's love for night duty to Betty Althouse.  
Along with her strength, Theresa Fickert gives her muscles to Polly Noll.  
Our canary, Faye McKeever, resigns in favor of Dolores Pleva.  
Rose Kokolus wills Elaine Hill and Ann Kressley the outlook on her career to keep them from going astray.  
Marilyn Shipman's ability as a leader to the next president of Student Government.  
When purchasing clothes, Ruth Weaver should become familiar with Jean Miller's installment plan.  
"I'll buy a pack tomorrow"—it's only Adamae Cohen and Jean Litschke's borrowing ability being given to Mary J. Lippowitch.  
Going, going, gone!—Betty Schell and Thelma Kurinec's hope chests to Lorraine Kuhns.  
For a decorative room, Ora Schray gives her souvenirs adopted from her various hangouts to Jeanne Kindt.  
Jean Oswald's initiative to future Committee Chairmen.  
Jeanette Miller wills Jane Rickert 5 P.M. supper daily so she may hear "When a Girl Marries".

Money is unimportant to Jean Leiser and Stephanie Vasievich, for they leave \$10,000 to build a snackbar in the elevator.

Mary Oberholtzer wills her Ford to Sylvia Ertel in case the Dodge breaks down.

Jean Blazofsky and Marion Gabuzda give their hair to Clara Krutul.

Coty, Revelon, Chen Yu—it's only Beryl Weicker packing her cosmetics for Joan McCall.

Marie Harding's Unicaps to Shirley Barto and Catherine Frantz—never can tell when you'll need 'em.

You won't have to bathe in the sun anymore, Fern Ruffner, because Janet Snyder gives you her bronze skin.

To keep her out of mischief during idle hours, Blanche Shankenberger leaves her stack of True Confessions to Jean Knies.

Betty Hirschel's volume on 'Advice to the Lovelorn' to Toth—carry on, Olga.

For those last training days, Anita Welliver gives her left-over stripes to Evelyn Beers.

Kathryn Haas leaves her superb supervision to Jean Stager.

Betty Baker leaves her residence in the Graduate Home to Betty Jones—You may have use for it some day.

Faith Wilson wills her airplane to Santa Claus—less waste with more haste.

Elizabeth Deily, our enthusiastic Republican, leaves her political interests to Mary Crouse.

Joyce Denicola leaves her small feet to Marion L. Haines.

Jean Danner's stature to Janice Brinkman—it's all yours, kid.

Smokey Reinert's skill with the brushes to Dolores Wenner.

Big bargains at the 'R&L' Beauty Salon, with beautician Ellen Ruch and barber Mary Lesslie—special to the Class of '50.

Betty Hepler's executive ability to the editor of the next year book.

When planning your vacation, Lois Rotzell, get some 'hot tips' from Grace Smith.

To assure Eugenia Sivar of a neat T. B. essay, Ethel Ray leaves her typewriter.

'For the pause that refreshes'—Grace Linsenbigler's "tea bags" to Shirley Betge.

For those \$64 questions Carolyn Angstadt leaves her State Board Book to Pauline Gilly.

To a friend of supreme esteem, Miss Ethlyn L. Eichel, many more appreciable classes.

Class of 1949

Witnesses:

Legal Scribes

Participating Members

## A MOCK WEDDING

The Neurological Seminary was the scene of the charming wedding last evening when Miss Epilepsy, daughter of Mr. Grand Mal and Mrs. Petite Mal, and Mr. Rapid Pulse, son of Mr. Endo-Carditis and Mrs. Myo-Carditis, were united in marriage.

The church was beautifully decorated with hemiplegias, asphasias, and multiple neuritis. A large bell-palsy was hung over the altar. Miss Disinfectant sang several selections with the autoclave arrangement.

The guests were taken to the church by locomotor ataxia, and ushered to their seats by ushers Al-kalie and Ben-zedrene.

The bride was attended by Misses Ann-Esthesia, Violet-Ray, and Ethel-Chloride, carrying gorgeous bouquets of neurasthenias.

The Misses Delusion and Allusion held up the bride's train of white gauze in highly sterilized fashion. Little Neuron was the ring bearer.

Out of town guests were Madame Poli-O-Myelitis, her grandson Baby Rickets, and Sir Fibroma and his niece, Node.

The bride and groom are going to Tic Douleureux for their honeymoon.

The wedding was the most brilliant affair of the season.



## CAN YOU IMAGINE?

The fourth floor being quiet after 10 p.m.?  
 Dr. George Boyer selling his Model-T Ford?  
 Betty Hirschel keeping resolutions?  
 Sara Reiter without her glasses?  
 Dr. Ramer without his waxed mustache?  
 Marie Harding being quiet and reserved?  
 Betty Reinert not wearing the "New Look"?  
 Harriet Madeira wearing flat heels?  
 Jean Danner being a member of the "Six Footers Club"?  
 Dorothy Seyfried rushing?  
 Miss Ginder going off duty on time?  
 Jean Oswald being calm, cool, and collected?  
 Barbara Ziegler as a brunette?  
 Student Nurses getting every week-end off?  
 Elizabeth Deily staying awake in class?  
 Violet Trexler without yarn and needles?  
 Mrs. Vogt not locking the door promptly at midnight?  
 Catherine Turbedsky failing an exam?  
 Marilyn Shipman not washing her hair at least two times a week?  
 Being without your keys at State?  
 Kathleen Beil minus freckles?  
 Dr. Sell giving a lecture without relating a joke?  
 Miss Adele Miller not giving a daily quiz?  
 Mary Oberholtzer without a theory?  
 Dr. C. H. Trexler with uncombed hair?  
 Vera Shoemaker spending an evening in the Nurses Home?  
 Miss Eichel at a loss for words during 'pep' talks?  
 Jeanette Miller being boisterous?  
 Ward E filled with 'Berg and Lehigh students?  
 Nellanne Radko not being candid?  
 The Doctors writing legibly?  
 Faye McKeever singing bass?  
 Joyce Denicola without Marion Gabuzda?  
 Escalators in the Nurses Home?  
 Lorraine Repsher staying out of trouble?  
 Adamae Cohen being 5' 11" tall?  
 Everyone getting to Chapel on time?  
 Elinor Bingell not having a date?  
 Dr. R. L. Schaeffer not making rounds with his "boys"?  
 The Seniors using napkins in the diningroom?  
 Theresa Fickert as head nurse on C&D?  
 Ora Schray being ready on time?  
 Dr. J. J. Bernhard using the Tucker Mc Lane forceps?  
 Kathryn Haas being a "hep-cat"?  
 Ruth Leiby not asking questions?  
 Students getting monthly pay checks?

## BUREAU OF ENLIGHTENMENT

Name	Remarkable Thing About Us Seniors	Noted Expression	Probable Cause of Death
Carolyn Angstadt	Casual clothing	For Pete's sake	Itimosis
Helen Bailey	Dark circles	For Pete's sake	Hysterodinia
Betty Baker	Smiling "hello"	Oh, my achin' muscles	Micropodia
Patricia Berger	Jitterbugging	Must wash my hair	Monophobia
Jean Blazofsky	Shiny long tresses	Oh, my gosh	Leptophonia
Vera Clewell	Cameo appearance	Honest to goodness	Helosis
Adamae Cohen	Nickname	Got a cigarette?	Macrobrosis
Jean Danner	Stature	Was Macht	Microsomia
Elizabeth Deily	Devilish grin	Oh, Schmatza	Conclisis
Joyce Denicola	Record collecting	Jeezers	Paulocardia
Doris Deppe	Abstention from smoking	Oh, my word	Telesthesia
Doris Fink	Corny wit	Hi, Mabel	Mercoralgia
Marion Gabuzda	Hair-cutting talent	Golly	Peinotherapy
Doris Guth	New penny hair	Oh, sugar	Erythromania
Marie Harding	Unlimited jokes	Greetings	Dyscoimesis
Betty Hepler	Constant doodling	Say	Dactylology
Betty Hirschel	Broken resolutions	Horrors	Dinomania
Rose Kokolus	Neatness	What in the world	Hypnolepsy
Thelma Kurinec	Hometown	What was your first clue	Ergasiophobia
Charlyne Lagerquist	Jet black hair	For Pete's sake	Hypomorph
Roberta Lanfear	Nightly dates	Woo! wo!	Podalgia
Elsie Lantz	Unused privileges	Ach	Logaphrasia
Jean Leiser	Persistent giggling	Do you know what?	Tachyphagia
Mary Lesslie	Fluctuating moods	Gee	Fatigation
Charmaine LeVan	Impulsive ideas	Yes, well now	Pedionalgia
Grace Linsenbergler	Common sense	It'll all come out in the wash	Pelagism
Jean Litschke	Dimples	Honestly	Eupepsia
Jane Louden	Wardrobe	You ain't a kiddin'	Odontobothrion
Harriet Madeira	Endless stock of shoes	Geewhiz	Erethism
Faye McKeever	Vocal cords	No kiddin'	Xenophonis
Evelyn Miller	Drawling voice	Oh! for Pete's sake	Narcolepsy
Jean Miller	Front tooth	Do you know what?	Lethologia
Jeanette Miller	Radio ear	For goodness sake	Pseudo-anemia
Mary Oberholtzer	Philosophies	Ooi, sugar	Cyanesthesia
Jean Ochs	Temperament	Holy cow	Hypothymergasia
Marion Rau	Trumpet pin	Drop dead	Marcoesthesia
Ethel Ray	Sporadic typing	You're a stinker	Miliaria
Marie Reed	Capriciousness	Isn't he cute?	Cachennation
Lorraine Repsher	Poetic tendencies	What was your first clue?	Bathypnea
Ruth Rosenberry	Words of wisdom	Oh, brother	Empiricism
Ellen Ruch	Shyness	Oh, I forgot	Microphonia
Betty Schell	Hope Chest	You moldy cow	Cacochymia
Betty Schneck	Phone calls	Hi	Bulimia
Jayne Schweyer	Frankness	Yes, well	Ephidrosis
Mary Shamonsky	Photogenic features	Darn, it all	Dyscoinesis
Blanche Shankenberger	Good-natured attitude	Holy Nellie	Attenuation
Marilyn Shipman	Variety of bathing suits	That's getting on my nerves	Achromotrichia
Vera Shoemaker	Clowning	Schmatza	Acomia
Grace Smith	Frenzy for hats	Gee whiz	Oniomania
Janet Snyder	Contagious laughter	Ye, gads	Raphania
Marietta Staffieri	A letter a day	What the \$\$\$\$!	Hypercenesthesia
Ferne Strohl	Bass voice	Geez-o	Onychophagy
Roberta Surplus	Determination	Oh, Maggie	Pyrosis
Violet Trexler	Knitting mania	Gee	Pragmatamnesia
Catherine Turbedsky	Perisistent itch	Oh, now	Hypercryalgisia
Stephanie Vasievich	Straight bangs	Knit one, purl two	Manicism
Beryl Weicker	Blue rimmed glasses	Love them all	Alethia
Anita Welliver	Calmness	O, my gosh	Odoxesmus
Faith Wilson	Miniature horse collect'n	Say	Hypopraxia
Genevieve Yurish	Doll-face	Look dear	Dyschromatopsia
Barbara Ziegler	Silliness	Huh	Spasmolygmus

## THAT FIRST DAY ON DUTY

You hurriedly dressed,  
All seemed to go wrong;  
A run in your stocking,  
The uniform too long.

You march down to chapel,  
Reach the first floor,  
Alas and Behold!  
They were closing the door.

Finally you made it  
All out of breath,  
Your mind in a dither,  
You're scared half to death.

The roll call begins,  
Thoughts still aren't clear,  
Someone nudges you,  
Then you meekly say "here".

Chapel finally completed,  
Songs having been sung,  
Breakfast is next  
And you're all on the run.

The food's set before you,  
You just sit and stare,  
Your tummy's turning cart-wheels  
No appetite there.

At last you're on duty,  
A patient calls, "Nurse",  
You answer her kindly  
As you've often rehearsed.

She asks for a bedpan,  
Alas! what to do?  
No one else around  
So it's all up to you.

Now which is the top?  
Thoughts run through your mind,  
You've been taught this in class  
Time after time.

At last that is done,  
You go about chores,  
Having only two hands  
Wishing you had four.

When the day's finally over  
You breathe a deep sigh,  
"I guess I'll never be a nurse  
But I'm proudly going to try".

Now a few years later  
We sit down and roar  
At our first day on duty  
On a brand new floor.

Faye McKeever '49

## MEMOIRS

Luggage, chatter, anxious faces  
Filled with joy and fear,  
Measurements, books, strange new places,  
'Twas the start of our career.

We came as nurses, so we thought,  
But much had to be learned,  
For R.N.'s still cannot be bought  
But definitely are earned.

With rust removed from hands and brains,  
A quiz became a trap.  
We learned the cause of human pains,  
Whilst striving for our cap.

Time for duty on the floor—  
This day was long awaited,—  
But aching feet and tears galore  
Were not anticipated.

Six long months elapsed—  
As probies we've passed,  
And now that we're capped  
We grow up, but fast!

Just to work on a Private Floor  
Was our one desire,  
Where a chocolate here and a gumdrop there  
Added to our attire.

Now take C and D—  
It's quite a big space,  
Your assignment, you see,  
Was to cover the place.

Remember the dispensary?  
Your heart was filled with pride.  
What was the occasion?  
'Twas your first ambulance ride!

And E and H, our medical floor,  
A place of tonics and pills,  
You gave them this and that before  
You sent out "seriously ill's".

Ochsner, Kelly, scalpel, tie—  
The doctor's waiting for,  
But you were just about to cry  
'Cause your tray was on the floor.

Rock-a-bye baby in sunshine or rain,  
You will descend with each labor pain,  
Membranes will rupture, waters will fall,  
And down will come baby, placenta, and all.

We wash and we scrub  
Because of contamination,  
But is every little microbe  
Confined to Isolation?

Thinking back and remembering J—  
"Yes, well now, we don't do it this way.  
Clean this equipment, use plenty of soap."  
You scan the rotations for your name, with hope.

Then off to Physio  
For a one week stay,  
One thing you were sure of—  
Last hours every day.

One cannot complain  
On Ward W2  
Until the last strain  
When your case summary's due.

If you weigh and measure  
Then set up a tray,  
And have anorexia—  
You're in the D. K.

Then off to State  
With its depressives and manics,  
So often in tubroom  
You witnessed their panics.

And now in conclusion  
Without any regrets,  
We'll ALL be good nurses,  
We'll try—won't we? Let's!

Lorraine G. Repsher '49



## PRE-CLINICAL CLASS

Albert, Shirley M.	Jones, Janet L.	Pfarr, Annabelle H.
Backensto, LaRue E.	Kern, Janet E.	Rahn, Hallie L.
Beam, Joann S.	Kistler, Ruth L.	Renninger, Leah K.
Bliss, Kathleen G.	Kline, Nancy J.	Rodgers, Edith J.
Blue, Joyce M.	Knauss, Lucille P.	Roling, Audrey M.
Chalfa, Theresa F.	Kurtz, Isabel M.	Sauerwine, Ruey G.
Davis, Jo Ann	Lakitsky, Dolores M.	Schultz, Ruth A.
Eck, Myrtle L.	Long, Carolyn H.	Smith, Doris M.
Everett, Marjorie L.	Ludwig, Joan	Stauffer, Dorothy M.
Fenstermacher, Ruth M.	Maysick, Fay Ann	Stem, Dolores J.
Gerhard, Helen C.	Maurer, Hilda A.	Stoudt, Joyce E.
Grove, Betty J.	Miller, Gladys N.	Weisel, Betty L.
Guth, Rena O.	Peters, Rachael A.	Wetherhold, Janice L.



## JUNIOR CLASS

Benninger, Nancy J.	Moczulski, Dorothy S.
Berger, Marjorie J.	O'Hearn, Margaret M.
Deppe, Bernice C.	Renninger, M. Madeline
Fogle, Lucille A.	Spock, Anna
Gerhart, Marian J.	Steigerwalt, Jane L.
Homcha, Anna	Swope, Arlene M.
Jones, Barbara A.	Tavianini, Rita D. A.
Mantz, Joyce M.	Werner, Gloria J.



## INTERMEDIATE CLASS

Althouse, Betty I.  
 Barto, Shirley L.  
 Beers, Evelyn  
 Betge, Shirley J.  
 Bolcavage, Helen  
 Brinkman, Janice I.  
 Crouse, Mary L.  
 Dunstan, Sara R.  
 Ertel, Sylvia E.  
 Frantz, Catherine E.  
 Gilly, Pauline C.  
 Haas, Elizabeth L.  
 Haines, Joyce A.  
 Haines, Marian Helen  
 Haines, Marian Lillian  
 Hill, Elaine H.  
 Hochstatter, Jean K.  
 Hunsberger, Louise E.

Hutnyan, Mary C.  
 Jones, Betty M.  
 Keller, Dorothy L.  
 Kemmerer, Dolores R.  
 Kidd, Esther J.  
 Kindt, Jeanne L.  
 Knies, Jean M.  
 Kozo, Grace  
 Kressly, Ann L.  
 Krutul, Clara T.  
 Kuhns, Lorraine H.  
 Lippowitsch, Mary J.  
 Lischer, Margaret E.  
 McCall, Joan E.  
 McNelly, Dorothy C.  
 Mantz, Mabel A.  
 Noll, Pauline  
 Peters, Arlene L.

Petrilli, Adeline D.  
 Pleva, Dolores M.  
 Rickert, Jane L.  
 Rotenberger, Janet I.  
 Rotzell, Lois M.  
 Ruffner, Fern R.  
 Scherer, Dorothea E.  
 Schroeder, Agnes I.  
 Shafer, Delphine L.  
 Sheldon, Elizabeth J.  
 Sivar, Eugenia  
 Stager, Jean G.  
 Toth, Olga M.  
 Trexler, Alice M.  
 Weaver, Ruth A.  
 Wenner, Dolores J.  
 Wetzell, Lorraine E.  
 Yeakel, Gloria S.

## STUDENT COUNCIL

President - - - Marilyn M. Shipman  
 Vice President - - Ruth A. Rosenberry  
 Secretary - - - Lucille A. Fogel  
 Treasurer - - - Alice M. Trexler  
 House President - Violet M. Trexler  
 Elsie G. Lantz



Faculty Advisors - - - - Ethlyn L. Eichel  
 Adele M. Miller  
 Jeanette K. Silfies

Class Representatives - - Mary E. Oberholtzer  
 Jean L. Oswald  
 Jane L. Rickert  
 Janet M. Snyder

## THE STUDENT GOVERNMENT ASSOCIATION



The Student Government Association has played an important role in the lives of our students for the past eighteen years. The Association has this year, endeavored to create a closer unity between the students and faculty, thus resulting in a well-functioning organization. The Student Council, representative group for the organization, held monthly meetings with our faculty advisors to discuss difficulties. These difficulties were then openly discussed at the monthly meeting of the Student Government.



Among the activities for the year were the Halloween Party, the "Frosty Frolic", our annual Christmas dance, presentation of many interesting programs at the meetings, and the sending of CARE packages to needy families of Europe. It was through the splendid co-operation of the entire student body and our advisors that these activities were successful.

May we extend our sincerest wishes for continued success of the organization in future years.

"Congratulations"



## CHORUS

Perfection is the aim of this choral group under the direction of Dr. Harold K. Marks. Chorus is attended by the majority of the student group. Their achievements are displayed at their annual Spring Concert and during the commencement program, adding greatly to the festivity of this occasion. May their number and success grow with the years.

Albert, Shirley M.	Haas, Kathryn L.	Louden, Winifred J.	Schell, Betty M.
Althouse, Betty I.	Haines, Joyce A.	Ludwig, Joan	Schneck, Betty J.
Backensto, LaRue	Harding, Marie E.	Maysick, Fay Ann	Schray, Ora D.
Barto, Shirley L.	Hill, Elaine H.	Maurer, Hilda A.	Schweyer, Jayne E.
Beers, Evelyn	Hutyman, Mary C.	McCall, Joan E.	Schroeder, Agnes I.
Beil, Kathleen M.	Jones, Barbara A.	McKeever, Faye E.	Seyfried, Dorothy A.
Benninger, Nancy J.	Jones, Betty M.	McNelly, Dorothy C.	Shafer, Delphine L.
Berger, Majorie J.	Jones, Janet L.	Miller, Evelyn K.	Shoemaker, Vera E.
Betge, Shirley J.	Keller, Dorothy L.	Miller, Gladys N.	Sivar, Eugenia
Bingell, Elinor J.	Kemmerer, Dolores R.	Miller, Jean R.	Snyder, Janet M.
Blazofsky, Jean	Kidd, Esther J.	Miller, Jeanette F.	Spock, Anna
Bliss, Kathleen G.	Kindt, Jeanne L.	Moczulski, Dorothy S.	Stager, Jean G.
Blue, Joyce M.	Kistler, Ruth L.	Noll, Pauline	Stauffer, Dorothy M.
Bolcavage, Helen	Kline, Nancy J.	Ochs, Jean E.	Steigerwalt, Jane L.
Brinkman, Janice I.	Knies, Jean M.	O'Hearn, Margaret M.	Strohl, Fern D.
Clewell, Vera E.	Krutil, Clara T.	Oswald, Jean L.	Stoudt, Joyce E.
Crouse, Mary L.	Kuhns, Lorraine H.	Peters, Racheal A.	Surplus, Roberta J.
Danner, Jean M.	Kurinec, Thelma M.	Pfarr, Annabelle H.	Swope, Arlene M.
Deily, Elizabeth L.	Kurtz, Isabel M.	Rau, Marian J.	Tavianini, Rita D. A.
Denicola, Joyce G.	Lagerquist, Charlyne D.	Ray, Ethel N. R.	Trexler, Alice M.
Dunstan, Sara R.	Lanfear, Roberta R.	Renninger, Madeline M.	Trexler, Violet M.
Ertel, Sylvia E.	Leiby, Ruth M.	Reiter, Sara E.	Vasievich, Stephanie
Fenstermaker, Ruth M.	Leiser, Jean O.	Rodgers, Edith J.	Welliver, Anita M.
Frantz, Catherine E.	Lesslie, Mary J.	Rosenberry, Ruth A.	Wenner, Dolores J.
Gabuzda, Marion C.	LeVan, Charmaine K.	Rotenberger, Janet I.	Wilson, Faith M.
Gerhart, Marian J.	Linsenberg, Grace	Rotzell, Lois M.	Yeakel, Gloria S.
Grove, Betty J.	Lischer, Margaret E.	Ruch, Ellen I.	Yurish, Genevieve J.
Guth, Doris J.	Litschke, Jean L.	Ruffner, Fern R.	Ziegler, Barbara M.
Haas, Elizabeth L.	Long, Carolyn H.	Sauerwine, Ruey G.	



## FORUM GROUP

The addition of this activity to our selection was indeed a commendable move. It affords the students the pleasure of attending activities with the populace of the community. Instrumentals, orchestrations, chorals, vocalists, operas, and plays were included in the roster of entertainment. A greater appreciation of the finer arts is cultivated through active participation in these affairs.

Angstadt, Carolyn E.	Kressley, Ann L.	Rickert, Jane L.
Baker, Betty L.	Lantz, Elsie G.	Scherer, Dorothea E.
Berger, Patricia S.	Madeira, Harriet C.	Shamonsky, Mary L.
Cohen, Adamae	Oberholtzer, Mary E.	Shenkenberger, Blanche G.
Deppe, Doris A.	Peters, Arlene L.	Shipman, Marilyn M.
Fickert, Theresa B.	Petrilli, Adeline D.	Smith, Grace M.
Hepler, Betty L.	Pleva, Dolores M.	Toth, Olga M.
Hirschel, Betty J.	Radko, Nellanne	Turbedsky, Catherine A.
Kokolus, Rose	Reed, Marie L.	Weicker, Beryl M.
Kozo, Grace		



## NIGHT SCHOOL

Through the efforts of the student body, an extra-curricular activity was initiated this fall. Registration in a large variety of night classes at the Allentown High School was offered to students desiring to broaden their knowledge on subjects of their own choice. Selections from the group included typing and art. In future years we feel that this activity will expand, thereby providing an opportunity to fulfill educational desires previously unobtainable yet coveted.

Bailey, Helen C.

Fink, Doris L.

Hunsberger, Louise E.

Reinert, Betty M.

Repsher, Lorraine G.

Staffieri, Marietta E.

Weaver, Ruth A.



## BOWLING

Strike!! That may be one of the sounds coming from the Salvation Army gymnasium. The weekly sessions give the girls the opportunity to improve and display their bowling abilities and aid in the development of poise and grace. Keen competition afforded through physical participation in the sport illustrates alert minds and physically fit bodies requiring moderate diversifying recreation. Score—300.

Deppe, Bernice C.

Fogle, Lucille A.

Gilly, Pauline C.

Haines, Marion H.

Haines, Marion L.

Hochstatter, Jean K.

Homcha, Anna

Lippowitsch, Mary J.

Mantz, Joyce M.

Mantz, Mabel A.

Werner, Gloria J.

Wetzel, Lorraine E.



## HANDICRAFT

The weekly sewing circle—an aid to domestic needlework inclinations of active members. Projects in the group included knitting, crocheting, weaving, and embroidery. The beautiful handicrafts produced by the girls showed a variety of outstanding abilities. Profitable assistance was rendered by the two able counselors, Miss Roling and Mrs. Schultz.

Beam, Joann S.  
 Chalfa, Theresa F. H.  
 Davis, Jo Ann  
 Eck, Myrtle M.  
 Everett, Marjorie L.  
 Gerhard, Helen C.  
 Guth, Rena O.  
 Kern, Janet E.  
 Knauss, Lucille P.

Lakitsky, Dolores M.  
 Rahn, Hallie L.  
 Renninger, Leah K.  
 Roling, Audrey M.  
 Schultz, Ruth A. S.  
 Smith, Doris M.  
 Stem, Dolores J.  
 Weisel, Betty Lou

## ACKNOWLEDGMENTS

### TO OUR FRIENDS

The staff of the Servantes wishes to thank most sincerely all who have helped to make the 1949 Servantes truly an anniversary year book. To the photographers, Calvin Studio; the engravers, Sanders-Reinhardt Co.; the printers, Geo. P. Schlicher and Son; and all persons aiding in compiling and editing this book we sincerely extend our gratitude.

THE EDITORS

### TO DR. C. O. WILLIAMS

Our sincerest appreciation to you, Dr. C. O. Williams, for devoting a portion of your busy day rendering medical care and advice to the student nurses.

### TO OUR HOUSEMOTHERS

With fondness and respect we shall always remember our housemothers.

Mrs. Eleanor Blacker  
 Mrs. Gertrude Vogt  
 Miss Anna Fatzinger  
 Mrs. Louise Yeager  
 Mrs. Sallie Hinterleiter

## PROGRESS . . . .



PROPOSED ADDITIONS — ALLENTOWN HOSPITAL

Time, marching ever forward, leaves in its pathway the year 1949, the 50th Anniversary of the Allentown Hospital and its School of Nursing. On this occasion it seems most fitting to review its progress; up each hill, small and great, met and surmounted with the determination to serve humanity. Actual evidence of increasing progress is made visible by the proposed additions to the hospital.

The Allentown Hospital Association was organized in 1892 for the purpose of building and maintaining a hospital in Allentown, Pennsylvania. Through long hours of planning and working a charter was obtained in 1896, a tract of land purchased in 1898, and building preparations finally begun. In 1899 the Allentown Hospital was opened to receive patients for treatment. In the following years the original bed capacity of 30 became far too limited to accommodate the growing community. This led to the gradual expansion of the hospital to its present capacity of 397 beds.

The School of Nursing was organized in 1899 as a result of the need for a nursing staff within the hospital; it has given continuous service since that time. The first class—a group of three—was graduated in 1901. At that time the course of instruction was two years, being lengthened in 1912 to three years. On December 20, 1920, a three month affiliation at the Allentown State Hospital was added to the curriculum. The School of Nursing, having grown with the hospital, is graduating 72 members this year, the largest roster in its history.

A diploma from the School of Nursing entitles the graduate to become a candidate for registration in Pennsylvania and reciprocating states. Upon receiving a certificate of registration a graduate, by joining her Alumnae Association, becomes eligible for membership in the District, State, and National Nursing Associations. The school also meets the requirements of the American Red Cross Nursing Service.

The Allentown Hospital is registered with the American Hospital Association, is approved by the American College of Surgeons and the American Medical Association for the training of internes and residents.

Having passed the most transitional period, the first fifty years, we can feel certain that even greater advancements will be made by the hospital and its School of Nursing in future years in order to meet the needs of a growing community.







