

There's a lot going on at Lehigh Valley Health Network. In case you didn't catch all the latest news, here's a recap of what happened this week. Here are links to Mission Central posts, the latest issue of CheckUp, information about the Colleague Forum and taking your Health and Wellness Assessment, and Lehigh Valley Health News, our blog on LVHN.org containing timely information and health network news.

[LVHN.org is Mobile](#)

Visit from your phone or tablet, and the site will "respond" to fit your device and be readable.

[The 53rd Annual LVH-Muhlenberg Summer Festival is Underway](#)

Enjoy free admission, nightly entertainment, amusement rides, delicious foods and more through Saturday night.

[View the Summer 2014 Edition of Better Medicine](#)

Learn about advanced melanoma clinical trials, outcomes in robotic surgery, the use of Gamma Knife™ for nonmalignant conditions, the use of lasers for scar therapy and more.

[Wellness: Use Your Head, Use a Helmet](#)

Get tips for purchasing a helmet that fits properly.

[365, 364, 363...Counting Down to Wave 2 Hospital-Based Settings](#)

Learn which applications and key features will go live on Aug. 1, 2015.

[Cheer on Colleagues at Friday's Corporate Challenge Race](#)

Watch three teams from Valley Preferred, featuring colleagues and physicians, compete at the Valley Preferred Cycling Center.



Read the latest
issue of CheckUp



**Take your Health and Wellness
Assessment by Aug. 29**

[READ LEHIGH VALLEY HEALTH NEWS](#)

a blog on [LVHN.org](#) containing
timely health information and
health network news.

Mission Central

Let's make our mission possible.

It's up to each of us.

- HOME
- CHECKUP
- MAGNET ATTRACTIONS
- ABOUT
- CONTACT US
- SCHEDULES
- Q&A

< Motivational Monday: No Limits

The 53rd Annual LVH-Muhlenberg Summer Festival Begins Today >

LVHN.org is Mobile

We're pleased to announce that LVHN.org has gone mobile. You don't have to download an app. Just visit from your phone or tablet, and the site will "respond" to fit your device and be readable.

You may have noticed that most mobile sites are simpler versions of a main site with much less content. We retained the warm, welcoming feeling, and ensured that *all* of our content is accessible on your mobile device. You'll be able to [find a doctor](#), [phone number](#) and [location](#), like always. You'll also be able to research [LVHN services](#), [disease and conditions](#), and read [wellness articles](#).

In the future, we'll make our Lehigh Valley Health News blog at LVHN.org/news respond to your device too. We'll also implement even more enhancements to continue to make LVHN.org an even better experience for you and our community.



This entry was posted by [Admin](#) on August 11, 2014 at 2:43 pm, and is filed under [Get News](#), [Learn](#). Follow any responses to this post through [RSS 2.0](#). You can [leave a response](#) or [trackback](#) from your own site.

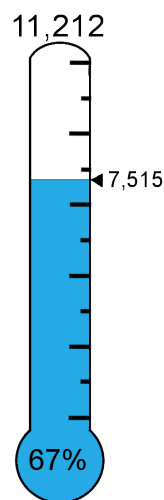
Leave a Comment

You must be [logged in](#) to post a comment.

Welcome to Mission Central. It's the place to get and share information about our health network. Here, you can share stories, ask questions, be inspired, celebrate our accomplishments, learn to be at your best and more. Visit frequently to stay energized at work and help make our mission possible.

Help Us Reach 100%

Take Your Health and Wellness Assessment Today



Take your assessment by Aug. 29 to be eligible for 2015 Choice Plus benefits. Go to mypopolytics.com.

 GO

FIND IT

- > [Be Inspired](#)
- > [Celebrate](#)
- > [Connect with Colleagues](#)
- > [Get News](#)
- > [Help Others](#)
- > [Learn](#)
- > [Live Healthy](#)
- > [Watch](#)

KEYWORDS

Annual Meeting Answers At Your Best
benefit **CheckUp** Children's Hospital
Colleagues Community
Conversation Crucial conversations
Dr. Swinfard Epic **Facebook**
Fireside Chat fitness
ForumQuestions2013
Forums handbook Holiday
Inspiration In the News
Leader-to-Leader LVHN fitness
Marathon for Via Motivation motivational monday
Open Enrollment patient safety week Photos
Preventive Screenings Questions Quotes
Recreation Reframing Sandy Service
Excellence Awards Service Star Storm
Summit teamwork **Thanks**
Turkey Veterans Day **Video** What's
new

Mission Central

Let's make our mission possible.



- HOME
- CHECKUP
- MAGNET ATTRACTIONS
- ABOUT
- CONTACT US
- SCHEDULES
- Q&A

< LVHN.org is Mobile

Cheer on Your Colleagues at Friday's Corporate Challenge Race >

The 53rd Annual LVH-Muhlenberg Summer Festival Begins Today

Today, Aug. 13, the 53rd annual [Lehigh Valley Hospital \(LVH\)-Muhlenberg Summer Festival](#) begins. For the third straight year, the festival will be held on the north side of the hospital campus near routes 22 and 378, in a location that allows for more space and additional parking.



One of the hospital's largest fundraisers, the [Summer Festival has raised millions of dollars](#) during its 53-year history to support services at [LVH-Muhlenberg](#). The very first festival was held even before ground was broken for what was to become the Muhlenberg Medical Center.

Each night of this year's Summer Festival will include special activities for children in "Kiddie Land," such as grab bags, face painting, sand art and a duck pond. Plenty of food, crafts and free entertainment are available for patrons of all ages to enjoy.

Wednesday's opening-night activities will include one-price \$20 ride tickets from 5 p.m. to 10:30 p.m., and the whimsical showings and popular sounds of the Crazy Hearts. For the second year in a row, the \$20 ride tickets will be available Thursday and Saturday nights. Saturday's one-price ride tickets are valid noon to 5 p.m. and include an entry into a bike drawing. This year's raffle will be held at the end of the night Saturday for the grand prize of \$500. Saturday's entertainment includes a 1 p.m. performance by The Big WaHu, and a 7 p.m. performance by The Large Flowerheads.

The free admission, nightly entertainment, amusement rides, ethnic and American foods and one of the area's largest juried arts-and-crafts shows make this event great for the entire family. Artisans and craftspeople from around America join local exhibitors, offering hundreds of handcrafted items ranging from oil and watercolor paintings to wood carvings and paper jewelry. Crafters and their creations are carefully screened and selected based on specific criteria. Each item must be handmade, contributing a unique quality to the array of crafts and artistic renderings presented at the Summer Festival.

This entry was posted by [Admin](#) on August 13, 2014 at 11:28 am, and is filed under [Celebrate](#), [Get News](#). Follow any responses to this post through [RSS 2.0](#). You can [leave a response](#) or [trackback](#) from your own site.

Leave a Comment

You must be [logged in](#) to post a comment.

Welcome to Mission Central. It's the place to get and share information about our health network. Here, you can share stories, ask questions, be inspired, celebrate our accomplishments, learn to be at your best and more. Visit frequently to stay energized at work and help make our mission possible.

Help Us Reach 100%

Take Your Health and Wellness Assessment Today

11,212



Take your assessment by Aug. 29 to be eligible for 2015 Choice Plus benefits. Go to mypopolytics.com.

FIND IT

- > [Be Inspired](#)
- > [Celebrate](#)
- > [Connect with Colleagues](#)
- > [Get News](#)
- > [Help Others](#)
- > [Learn](#)
- > [Live Healthy](#)
- > [Watch](#)

KEYWORDS

Annual Meeting Answers At Your Best
benefit CheckUp Children's Hospital
Colleagues Community
Conversation Crucial conversations
Dr. Swinfard Epic Facebook
Fireside Chat fitness
ForumQuestions2013
Forums handbook Holiday
Inspiration In the News
Leader-to-Leader LVHN fitness
Marathon for Via Motivation motivational monday
Open Enrollment patient safety week Photos
Preventive Screenings Questions Quotes
Recreation Reframing Sandy Service
Excellence Awards Service Star Storm
Summit teamwork Thanks
Turkey Veterans Day Video What's
new



Welcome to Better Medicine

For physicians by physicians

TAKE CHARGE

Tips, hints and support to help manage your health.



REFER A PATIENT - PHONE NUMBERS »

(/FOR REFERRING PHYSICIANS/ONE C

GET THE LATEST UPDATES FROM OUR SERVICE LINES

READ THE CURRENT ISSUE OF BETTER MEDICINE

Inside This Issue

Primary Care

http://www.lvhn.org/for_referring_physicia

Ambulatory

http://www.lvhn.org/for_referring_physicia

Cancer

http://www.lvhn.org/for_referring_physicia

Heart and Vascular

http://www.lvhn.org/for_referring_physicia

Inpatient

http://www.lvhn.org/for_referring_physicia

Internal Medicine

http://www.lvhn.org/for_referring_physicia

Neurology and Neurosurgery

http://www.lvhn.org/for_referring_physicia

Orthopedics

http://www.lvhn.org/for_referring_physicia

Plastic Surgery

http://www.lvhn.org/for_referring_physicia

Population Health

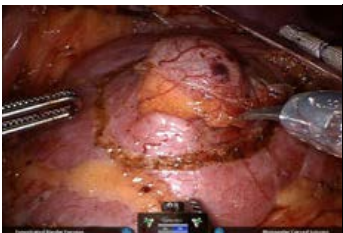
http://www.lvhn.org/for_referring_physicia

Rehabilitation

http://www.lvhn.org/for_referring_physicia



http://www.lvhn.org/for_ref



http://www.lvhn.org/for_ref



http://www.lvhn.org/for_ref

Get Better Medicine in Your Inbox

http://www.lvhn.org/for_referring_physicians/better_medicine_subscription

Sign up to receive our physician communications digitally.



[SUBSCRIBE \(HTTP://WWW.LVHN.ORG/FOR_REFERRING_PHYSICIANS/BETTER_MEDICINE_SUBSCRIPTI](http://www.lvhn.org/for_referring_physicians/better_medicine_subscribe)

[Find a Doctor or Practice \(http://www.lvhn.org/find_a_doctor\)](http://www.lvhn.org/find_a_doctor)



Search our database of physicians, advanced practice clinicians and physician practices.

[SEARCH \(HTTP://WWW.LVHN.ORG/FIND_A_DOCTOR\)](http://www.lvhn.org/find_a_doctor)

[Telehealth Services \(http://www.lvhn.org/for_referring_physicians/telehealth\)](http://www.lvhn.org/for_referring_physicians/telehealth)



LVHN clinicians are using technology to care for patients across the miles.

[LEARN MORE \(HTTP://WWW.LVHN.ORG/FOR_REFERRING_PHYSICIANS/TELEHEALTH\)](http://www.lvhn.org/for_referring_physicians/telehealth)

[Our Physician Group \(http://www.lvhn.org/about_us/lehigh_valley_physician_group_lvpg\)](http://www.lvhn.org/about_us/lehigh_valley_physician_group_lvpg)



Lehigh Valley Physician Group (LVPG) is among the largest medical groups in the United States.

[LEARN MORE \(HTTP://WWW.LVHN.ORG/ABOUT_US/LEHIGH_VALLEY_PHYSICIAN_GROUP_LVPG\)](http://www.lvhn.org/about_us/lehigh_valley_physician_group_lvpg)

What's New at LVHN

Watch videos of these doctors in the Summer 2014 issue of Better Medicine.

- [Paul Cesanek, MD \(http://www.lvhn.org/find_a_doctor/profile/3455\)](http://www.lvhn.org/find_a_doctor/profile/3455)
- [Matthew Martinez, MD \(http://www.lvhn.org/find_a_doctor/profile/3408\)](http://www.lvhn.org/find_a_doctor/profile/3408)
- [Martin Martino, MD \(http://www.lvhn.org/find_a_doctor/profile/2365\)](http://www.lvhn.org/find_a_doctor/profile/2365)
- [Suresh Nair, MD \(http://www.lvhn.org/find_a_doctor/profile/2177\)](http://www.lvhn.org/find_a_doctor/profile/2177)
- [Rohit Sharma, MD \(http://www.lvhn.org/find_a_doctor/profile/4013\)](http://www.lvhn.org/find_a_doctor/profile/4013)

[Robotics \(http://www.lvhn.org/for_referring_physicians/robotics\)](http://www.lvhn.org/for_referring_physicians/robotics)

[Transplant Surgery \(http://www.lvhn.org/for_referring_physicians/transplant_surgery\)](http://www.lvhn.org/for_referring_physicians/transplant_surgery)

[Urology \(http://www.lvhn.org/for_referring_physicians/urology\)](http://www.lvhn.org/for_referring_physicians/urology)

[Weight Management \(http://www.lvhn.org/for_referring_physicians/weight_management\)](http://www.lvhn.org/for_referring_physicians/weight_management)

[Women and Children \(http://www.lvhn.org/for_referring_physicians/women_and_children\)](http://www.lvhn.org/for_referring_physicians/women_and_children)

Related Resources

[Refer or Transfer a Patient \(/for_referring_physicians/one_call_does_it\)](http://www.lvhn.org/for_referring_physicians/one_call_does_it)

Get the phone numbers and information you need to complete a one-call transfer, admit a patient, schedule a surgery and more.

[Medical Staff Services \(/medical_staff_services/\)](http://www.lvhn.org/for_referring_physicians/medical_staff_services/)
Learn about our medical staff and find documents and policies.

[General Services Referral Guide \(/uploads/Referring_Physicians/11534_LVP_General_Final.pdf\)](http://www.lvhn.org/uploads/Referring_Physicians/11534_LVP_General_Final.pdf)
Find locations for labwork, diagnostic testing such as X-rays and MRIs, rehabilitation, pharmacies and more.

[Specialty Services Referral Guide \(/uploads/Referring_Physicians/11535_LVP_Specialty_Final.pdf\)](http://www.lvhn.org/uploads/Referring_Physicians/11535_LVP_Specialty_Final.pdf)
Find locations for cardiac and pulmonary testing, mammograms, sleep studies and more.

[Scholarly Works \(http://scholarlyworks.lvhn.org/\)](http://www.lvhn.org/scholarlyworks)

Search the collection of scholarly materials produced by LVHN.

- [Michael Swerc, MD \(http://www.lvhn.org/find_a_doctor/profile/2368\)](http://www.lvhn.org/find_a_doctor/profile/2368)
- [Tibisay Villalobos-Fry, MD \(http://www.lvhn.org/find_a_doctor/profile/4027\)](http://www.lvhn.org/find_a_doctor/profile/4027)
- [David Winand, MD \(http://www.lvhn.org/find_a_doctor/profile/4270\)](http://www.lvhn.org/find_a_doctor/profile/4270)

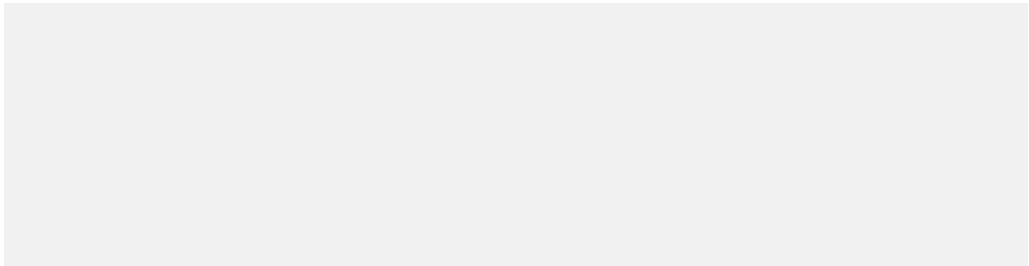
See all Find a Doctor videos.

(http://www.lvhn.org/why_choose_us/voices_of_passion_watch_provider_videos%20)

Schedule of Events

For information regarding these and other upcoming educational conferences, please contact the Division of Education at **610-402-2277**.

Date	Title	Type of credit
Sept. 19	Current Issues and Challenges: 2014 Fleming Palliative Medicine Symposium	CME & CNE
Sept. 22	Management of GERD and Gastrointestinal Complications Symposium	CME
Sept. 26	The 6th Annual Fleming Infection Prevention and Infectious Diseases Symposium	CME & CNE
Sept. 26	Integrated Healthcare	CME & CNE
Oct. 3	9th Annual Innovations in the Treatment of Gynecologic Cancers	CME & CNE
Oct. 16	Cultural Awareness Symposium	CME & CNE
Oct. 18	Cognitive Issues in Multiple Sclerosis Update	CME & CNE
Dec. 6	6th Annual Ultrasound in Obstetrics and Gynecology Conference	CME & CNE
Jan. 10	Cardiology for the Primary Care Physician	CME
Jan. 23-25	5th Annual Winter Retreat for Dept. of Anesthesiology	CME



[About Us \(/about_us\)](#)

[Become a Volunteer \(/become_a_volunteer\)](#)

[News \(/lehighvalleyhealthnews\)](#)

[About Our New Website \(/about_our_new_website\)](#)

[Media Room \(/media_room\)](#)

[Give Website Feedback \(/give_website_feedback\)](#)

[Contact Us \(/contact_Us\)](#)

[Careers \(/careers\)](#)

[Donate \(/donate\)](#)

Meet Our Providers: [Videos](#)
[Capture Their Personality.](#)
[Passion](#)
[\(/why_choose_us/voices_of_passion\)](#)





< First Core Bundle on The Learning Curve

Wellness Wednesday – Are You Wearing the Right Shoes? >

Wellness Wednesday – Use Your Head, Use a Helmet



There are many fun ways to enjoy summer. Whether you're taking a ride on a motorcycle, bicycle or skateboard, or swings in the batting cage, a fun day can turn into a dangerous situation if you do not wear a helmet.

"Wearing a helmet can reduce the risk for serious head injury and save your life," says Robert Barraco, MD, a board-certified critical care surgeon with Surgical Specialists of the Lehigh Valley. "Wearing a helmet is important because it absorbs most of the impact energy during a fall or collision, protecting your head and brain." Wearing a properly fitting bicycle helmet reduces the risk for serious head injuries by 85 percent, according to the American Academy of Orthopedic Surgeons.

A helmet should:

- Sit level on your head, not be tilted forward or back
- Have strong, wide straps that fasten snugly under the chin
- Be tight enough with straps fastened so no sudden pulling or twisting can move the helmet around on your head
- Comfortably touch your head all the way around and extend as low as possible to help cover the sides of your head
- Be stable enough to resist violent shakes or hard blows and stay in place
- Protect your forehead: the helmet should be only one to two finger widths above your eyebrows or eyeglass frames

"The bottom line is helmets save lives," Barraco says. "The statistics prove it. According to the U.S. Department of Transportation, of the 714 bicyclists killed in motor vehicle crashes in 2008, 91 percent were not wearing a helmet."

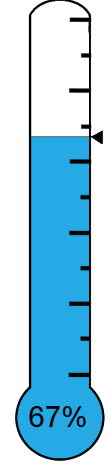
This week's wellness challenge: Make sure everyone in your family is informed and practices helmet safety. If you're not sure your helmet fits properly, ask a qualified bike store employee to help you adjust it.

Welcome to Mission Central. It's the place to get and share information about our health network. Here, you can share stories, ask questions, be inspired, celebrate our accomplishments, learn to be at your best and more. Visit frequently to stay energized at work and help make our mission possible.

Help Us Reach 100%

Take Your Health and Wellness Assessment Today

11,212



7,515

Take your assessment by Aug. 29 to be eligible for 2015 Choice Plus benefits. Go to mypopolytics.com.



FIND IT

- > Be Inspired
- > Celebrate
- > Connect with Colleagues
- > Get News
- > Help Others
- > Learn
- > Live Healthy
- > Watch

KEYWORDS

Look on your helmet for a sticker that indicates it meets safety standards set by the Consumer Product Safety Commission (CPSC) or Snell. If it doesn't have the sticker, you should replace it with a new helmet that does. A CPSC sticker means the helmet meets tough government standards and a Snell sticker means the helmet has been approved by the Snell Memorial Foundation, a nonprofit organization that tests helmet safety and sets, maintains and updates stringent standards.

When buying a helmet for a child, choose a helmet that fits the child now, not one the child will grow into. This may mean you'll need to buy another helmet in the next year.

If your helmet has been impacted, know when to replace it. "The foam in a bicycle helmet, for example, crushes to absorb the impact energy," Barraco says. "Even if there are no visible signs of damage, the helmet should be replaced. Other helmets, like football and hockey helmets, are designed to protect against multiple impacts."

Do you have a topic or question for Wellness Wednesday? Leave a comment and let us know what you want to read about.

This entry was posted by [Amanda Coe](#) on August 6, 2014 at 2:00 pm, and is filed under [Live Healthy](#). Follow any responses to this post through [RSS 2.0](#). You can [leave a response](#) or [trackback](#) from your own site.

Leave a Comment

You must be [logged in](#) to post a comment.

Annual Meeting Answers At Your Best
benefit CheckUp Children's Hospital
Colleagues Community
Conversation Crucial conversations
Dr. Swinfard Epic Facebook
Fireside Chat fitness
ForumQuestions2013
Forums handbook Holiday
Inspiration In the News
Leader-to-Leader LVHN fitness
Marathon for Via Motivation motivational monday
Open Enrollment patient safety week Photos
Preventive Screenings Questions Quotes
Recreation Reframing Sandy Service
Excellence Awards Service Star Storm
Summit teamwork Thanks
Turkey Veterans Day Video What's
new

Mission Central

Let's make our mission possible.



- [HOME](#)
- [CHECKUP](#)
- [MAGNET ATTRACTIONS](#)
- [ABOUT](#)
- [CONTACT US](#)
- [SCHEDULES](#)
- [Q&A](#)

< [Cheer on Your Colleagues at Friday's Corporate Challenge Race](#)

[Incident Outside LVH—Cedar Crest](#) >

365, 364, 363...Counting Down to Wave 2 Hospital-Based Settings

As the Epic transformation team at Lehigh Valley Health Network (LVHN) prepares for the February 2015 ambulatory settings launch of our new electronic medical record (EMR) and practice management modules, we hit another countdown milestone: Friday, August 1, 2014 started the one year countdown to wave 2 go-live in hospital-based settings. Wave 2 hospital-based sites include all those that provide care on an inpatient basis, including:



- Registration
- Scheduling
- Hospital Billing
- Patient portal (MyLVHN)
- Clinical documentation for inpatient, emergency department, operating room and hospital outpatient departments (such as, radiology).

For patients this covers a wide spectrum of services, and once wave 2 go-live happens it will mean that colleagues across LVHN will have access to comprehensive patient information from both ambulatory and hospital-based settings in one central location.

Below are some applications and some key features that will go-live on August 1, 2015 as part of wave 2 Hospital-Based settings –

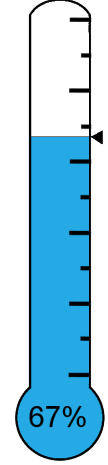
- **EpicCare Inpatient** is the application for clinical documentation, orders management, administration records and flowsheets for inpatient areas.
- **Rapid Medication Reconciliation.** Cut down on med rec steps by leveraging common allergies and medication lists with our ambulatory practices or external practices through a Health Information Exchange (HIE).
- **Speedy Searches.** Finding what you need has never been easier. A new, powerful search engine uses synonyms and related concepts to drive search results. Providers enter keywords to find relevant notes, medications, labs, problems and other clinical items in the patient's chart.
- **OpTime OR** is the surgical patient management application for post-anesthesia care unit (PACU) and perioperative services.
- **Real-Time Case Tracking.** With OpTime, you can track how long an operating room (OR) is being utilized from set-up to clean-up. This can increase the utilization of the ORs and will help reduce patient wait time.
- **Documentation.** As you heard many times, once you document into Epic, the information flows into one chart that every provider with Epic access can view. If your patient had knee surgery in the morning and they enter the emergency department (ED) because of pain, the ED provider would be able to open the patient's chart and see what went on before, during and after the surgery.
- **ASAP** is the ED module that supports patient flow and clinical management.
- **Population Health Scoreboard.** Makes sure time and resources are focused on

Welcome to Mission Central. It's the place to get and share information about our health network. Here, you can share stories, ask questions, be inspired, celebrate our accomplishments, learn to be at your best and more. Visit frequently to stay energized at work and help make our mission possible.

Help Us Reach 100%

Take Your Health and Wellness Assessment Today

11,212



7,515

67%

Take your assessment by Aug. 29 to be eligible for 2015 Choice Plus benefits. Go to mypopolytics.com.

 GO

FIND IT

- > [Be Inspired](#)
- > [Celebrate](#)
- > [Connect with Colleagues](#)
- > [Get News](#)
- > [Help Others](#)
- > [Learn](#)
- > [Live Healthy](#)
- > [Watch](#)

KEYWORDS

patients who need it the most. Care and risk scores allow providers and care managers to monitor population health and identify patients for outreach and proactive care.

- **Finish Up Fast.** Streamlines documentation for high-volume specialties. Providers complete post-visit documentation in fewer clicks and from one workspace, so they can wrap up a visit and move to the next patient as quickly as possible.

When the EMR goes live, Epic will help clinicians manage the increasing number of complex patients with multiple needs and extensive histories. Should these patients require hospital care or utilize hospital-based services in the future, all of their medical information will be available at the click of a button.

Reminder: Wave 1, Ambulatory-setting Super Users – If you couldn't attend the Wave 1 Super User Kick-off Meeting, you are required to watch the video on The Learning Curve (TLC) to earn credit. Search on TLC by name, 'Epic Wave 1 Super User Kickoff Meeting' or by course code: USEWAV1F15.

This entry was posted by [Jenn Fisher](#) on August 14, 2014 at 2:00 pm, and is filed under [Get News, Learn](#). Follow any responses to this post through [RSS 2.0](#). You can [leave a response](#) or [trackback](#) from your own site.

Leave a Comment

You must be [logged in](#) to post a comment.

Annual Meeting Answers At Your Best
benefit CheckUp Children's Hospital
Colleagues Community
Conversation Crucial conversations
Dr. Swinfard Epic Facebook
Fireside Chat fitness
ForumQuestions2013
Forums handbook Holiday
Inspiration In the News
Leader-to-Leader LVHN fitness
Marathon for Via Motivation motivational monday
Open Enrollment patient safety week Photos
Preventive Screenings Questions Quotes
Recreation Reframing Sandy Service
Excellence Awards Service Star Storm
Summit teamwork Thanks
Turkey Veterans Day Video What's
new

Mission Central

Let's make our mission possible.



- HOME
- CHECKUP
- MAGNET ATTRACTIONS
- ABOUT
- CONTACT US
- SCHEDULES
- Q&A

< The 53rd Annual LVH-Muhlenberg Summer Festival Begins Today

365, 364, 363...Counting Down to Wave 2 Hospital-Based Settings >

Cheer on Your Colleagues at Friday's Corporate Challenge Race



Teams representing 16 area organizations – including [Valley Preferred](#) – will compete Friday night at the [Valley Preferred Cycling Center's](#) annual Corporate Challenge.

The Italian Pursuit-style race will feature three teams from Valley Preferred, featuring colleagues and physicians. Team members include Julie Antidormi; Mohammad Bader, MD; Beth Berger, MD; Richard Boorse, MD; Mark Butsavage; Aaron Czysz, MD; Wayne Dubov, MD; Patrick Duffy, MD; Rob Fatz; Hubert

Huang; Catrina Kemmerer; Mark Li, MD; Jennifer Love; Joel Ninos; Carrie Olson; Angelo Procaccino; Randy Smargiassi; Vikram Verma, MD; Samuel Widdowson and Sally Wright.

Gates open at 6 p.m. Friday, and race time is 7:30 p.m. [Learn more](#) about Valley Preferred Cycling Center ticket discounts and other Recreation Committee benefits available for LVHN employees.

This entry was posted by [Kyle Hardner](#) on August 14, 2014 at 12:05 pm, and is filed under [Connect with Colleagues](#), [Get News](#). Follow any responses to this post through [RSS 2.0](#). You can [leave a response](#) or [trackback](#) from your own site.

Leave a Comment

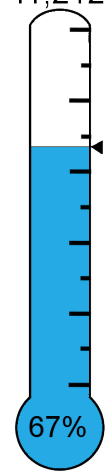
You must be [logged in](#) to post a comment.

Welcome to Mission Central. It's the place to get and share information about our health network. Here, you can share stories, ask questions, be inspired, celebrate our accomplishments, learn to be at your best and more. Visit frequently to stay energized at work and help make our mission possible.

Help Us Reach 100%

Take Your Health and Wellness Assessment Today

11,212



7,515

Take your assessment by Aug. 29 to be eligible for 2015 Choice Plus benefits. Go to [mypopolytics.com](#).

Search bar with a magnifying glass icon and a green 'GO' button.

FIND IT

- > [Be Inspired](#)
- > [Celebrate](#)
- > [Connect with Colleagues](#)
- > [Get News](#)
- > [Help Others](#)
- > [Learn](#)
- > [Live Healthy](#)
- > [Watch](#)

KEYWORDS

Annual Meeting Answers At Your Best
benefit **CheckUp** Children's Hospital
Colleagues Community
Conversation Crucial conversations
Dr. Swinford Epic **Facebook**
Fireside Chat fitness
ForumQuestions2013
Forums handbook Holiday
Inspiration In the News
Leader-to-Leader LVHN fitness
Marathon for Via Motivation motivational monday
Open Enrollment patient safety week Photos
Preventive Screenings Questions Quotes
Recreation Reframing Sandy Service
Excellence Awards Service Star Storm
Summit teamwork **Thanks**
Turkey Veterans Day **Video** What's
new